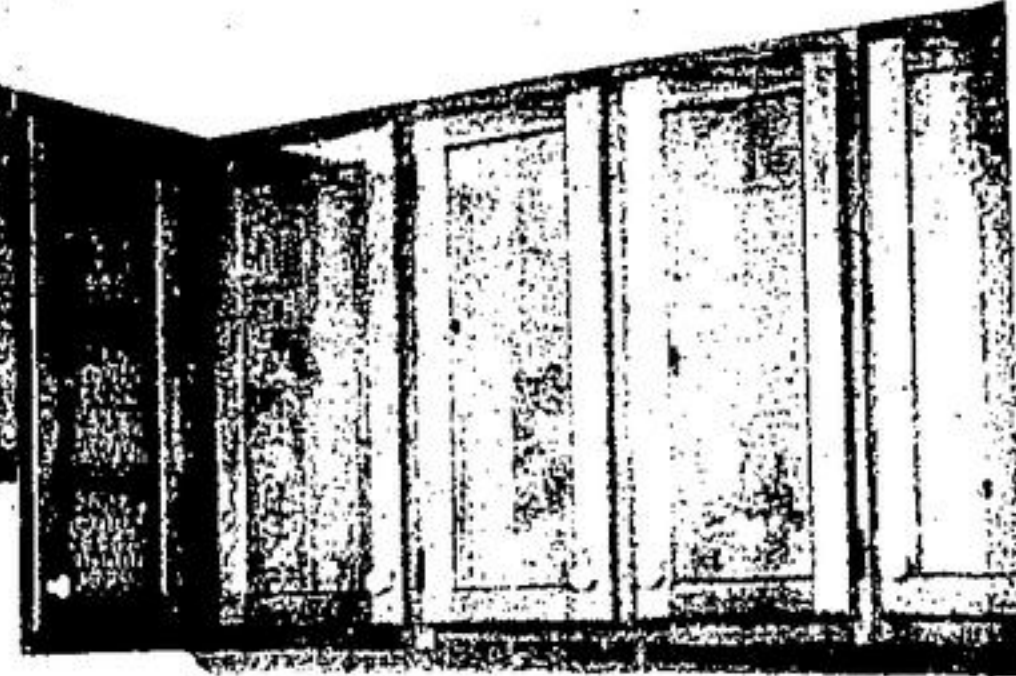


**PETERBOROUGH MODULAR UNIT CABINETS ARE QUALITY DESIGNED TO FIT ANY KITCHEN PLAN!!**



**FEATURING OUR NEW "PINE RIDGE" KITCHEN CABINETS!!**



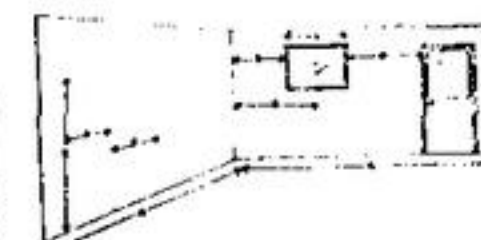
**Be Ready for "Custom Look" Kitchens**

**DOLLAR-SAVING "MODULAR UNITS" YOU SELECT FROM OVER 200 BASE UNIT AND MORE THAN 300 UPPER CABINET CHOICES...AND CREATE A KITCHEN PLAN THAT'S TRULY YOUR OWN...AT READY-BUILT PRICES!!!**

The Peterborough Modular Unit System offers scope to please the tastes. With cabinets as narrow as 9" and as wide as 48". Self-closing hinges on all doors. Many of the upper shelves are adjustable. Doors and drawer fronts included or cabinets can be ordered undrilled for your own hardware. Counter tops, sinks, faucets etc., not included in prices but are readily available to meet your needs.

**CHECK OUR PRICES BASED ON THE KITCHEN AS ILLUSTRATED (SHOWING NEW "PINE RIDGE" STYLING)**

Kitchen Featured Covers Wall Length of 72" With A Base and projecting 60" from the wall (base and shelves allow extra highest price ranges are included to give you an idea of cost or plan likely will raise or lower the total price to you. As noted, etc. are not included in quoted prices.



**UPPER UNITS**

30"x22" High Upper Peninsula	4 Glass Doors (Optional)
30"x32" High Upper Peninsula Corner	3 Glass Doors (Optional)
Cabinet 15"x 32" High	
Cabinet 27"x 32" High	
Cabinet 12"x 32" High	

**BRING US YOUR KITCHEN MEASUREMENTS AND WE'LL HELP YOU WITH YOUR NEW KITCHEN PLAN!!**

Measurements we require include: length of walls to be used; length from corner wall to centre line of window; width of window including trim; distance each side of window between casings or casing and wall; height and width of stove, refrigerator, dishwasher; location of electrical outlets and centre line of plumbing.

**Be Ready for Holiday Entertaining with Ready-Built "Custom Look" Kitchen Cabinets crafted by PETERBOROUGH**

**DOLLAR-SAVING "MODULAR UNITS" YOU SELECT FROM OVER 200 BASE UNIT AND MORE THAN 300 UPPER CABINET CHOICES...AND CREATE A KITCHEN PLAN THAT'S TRULY YOUR OWN...AT READY-BUILT PRICES!!!**

The Peterborough Modular Unit System offers scope to please the most personal of tastes. With cabinets as narrow as 9" and as wide as 48". Self-closing hinges on all doors. Many of the upper shelves are adjustable. Doors and drawer fronts included or cabinets can be ordered undrilled for your own hardware. Counter tops, sinks, faucets etc., not included in prices but are readily available to meet your needs.

**CHECK OUR PRICES BASED ON THE KITCHEN AS ILLUSTRATED (SHOWING NEW "PINE RIDGE" STYLING)**

Kitchen Featured Covers Wall Length of 72" With A Base and an Upper Peninsula projecting 60" from the wall (base and shelves allow extra.). Medium, lowest and highest price ranges are included to give you an idea of costs. Another arrangement or plan likely will raise or lower the total price to you. As noted, Counter tops, sinks, etc. are not included in quoted prices.



**BRING US YOUR KITCHEN MEASUREMENTS AND WE'LL HELP YOU WITH YOUR NEW KITCHEN PLAN!!**

Measurements we require include: length of walls to be used; length from corner wall to centre line of window; width of window including trim; distance each side of window between casings or casing and wall; height and width of stove, refrigerator, dishwasher; location of electrical outlets and centre line of plumbing.

**STYLE CHOICES! INCLUDING NEW "PINE RIDGE"**

- 1. NATURAL BIRCH**  
Our lowest priced line, ready for paint or stain.
- 2. PREFINISHED ACADIAN**  
Available in Seville Oak or Vintage Walnut woodgrains or Cherry finish.
- 3. WESTWOOD**  
Doors and drawer fronts of "DECRAFORM" rigid vinyl. Cherry or Pecan woodgrain finishes.
- 4. PIONEER BIRCH**  
Cabinets in a warm, glowing finish. A country kitchen look of old-time quality in selected red birch.
- 5. SHERWOOD BIRCH**  
The warm glow of a spice finish on yellow birch.
- 6. DALEWOOD ELM**  
Our finest cabinet line. Doors and drawer fronts finished in American Elm - a rare special Traditional Cherry or contemporary Bolero finishes.
- 7. NEW PINE RIDGE**  
Stile & Rail doors with Planked Knotty Pine inset panels and Pioneer Colonial moulding. White or Black ceramic knobs.

**UPPER UNITS**

	NATURAL BIRCH	PIONEER RED BIRCH	PINE RIDGE OR DALEWOOD ELM
30"x22" High Upper Peninsula	\$59.60	\$82.15	\$102.65
4 Glass Doors (Optional)	\$37.60	\$37.60	\$37.60
30"x32" High Upper Peninsula Corner	\$58.80	\$86.20	\$106.10
3 Glass Doors (Optional)	\$28.20	\$28.20	\$28.20
Cabinet 15"x 32" High	\$28.90	\$39.75	\$47.40
Cabinet 27"x 32" High	\$42.80	\$60.30	\$73.55
Cabinet 12"x 32" High	\$26.85	\$36.45	\$44.10

**BASE UNITS**

	NATURAL BIRCH	PIONEER RED BIRCH	PINE RIDGE OR DALEWOOD ELM
Base End Shelf Unit	\$55.50	\$59.65	\$59.65
27" Base Cabinet	\$60.10	\$82.05	\$96.55
Base Lazy Susan Corner Cabinet	\$101.95	\$113.80	\$126.90
27" Base Cabinet	\$60.10	\$82.05	\$96.55
12" Bank Of Drawers Cabinet	\$55.10	\$68.35	\$73.75
2 Finished Panels each 30"x35 1/4"	\$14.25	\$17.25	\$17.25
3-Ft. Piece Outside Corner Mould	.60	.75	.75
3-Ft. Joint Mould	.60	.75	.75

**QUALITY "STARTER SET" KITCHEN CABINETS**



**3 WIDTH CHOICES 54", 72", or 96"!!**  
**7 STYLES INCLUDING ALL-NEW "PINE RIDGE"**

	NATURAL BIRCH	ACADIAN	WESTMOUNT	PIONEER BIRCH	SHERWOOD BIRCH	PINE RIDGE OR DALEWOOD ELM
54" UPPER	\$62.50	\$81.70	\$89.50	\$102.30	\$115.00	\$123.50
54" BASE	\$80.55	\$98.75	\$109.80	\$118.70	\$130.45	\$141.30
72" UPPER	\$75.80	\$98.60	\$108.50	\$122.15	\$139.15	\$149.55
72" BASE	\$99.05	\$119.10	\$133.50	\$144.50	\$160.75	\$173.70
96" UPPER	\$97.00	\$122.90	\$136.75	\$156.10	\$182.30	\$196.40
96" BASE	\$130.95	\$157.05	\$177.50	\$190.80	\$205.05	\$233.35

**REPEAT OF SEPTEMBER SPECIAL! STAINLESS STEEL TWIN BOWL SINK**  
WITH 2 STRAINERS!  
**\$39.50 EACH**

**8" DECK FAUCET WITH NEW HIGH-RISE SPOUT!**  
With Chromed Handles \$15.89  
With Acrylic Handles \$18.89

**COUNTER TOPS \$2.99 FOOT AND UP!**  
6-FT... \$17.94  
8-FT... \$23.92  
10-FT... \$29.90

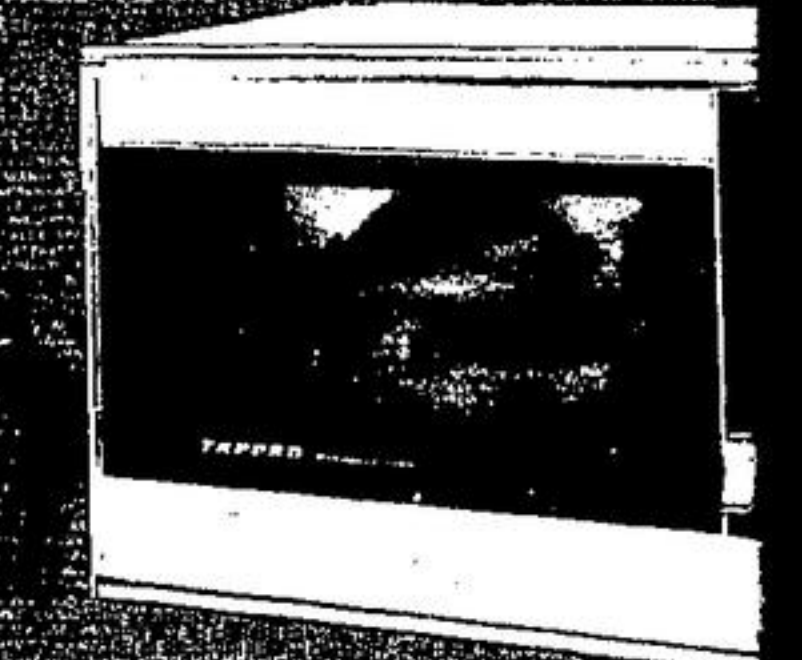
**CANADIAN GENERAL ELECTRIC KITCHEN BUILT-INS**



**BUILT-IN OVEN \$259.25**  
Model J53CJ. Automatic oven timer, clock and Minute Minder. Oven about 21"x15"x18-1/8". Porcelain broiler pan and rack included. COLOUR \$5.00 EXTRA

**COUNTER TOP RANGE \$158.55**  
About 30 1/2"x21-3/8"x9-1/8" deep with two 1250-watt and two 2100-watt elements. Porcelain surface in White or 3 optional colours. COLOUR \$5.00 EXTRA

**BLOCKBUSTER VALUE!**



**TAPPAN MICROWAVE OVEN \$367.00**  
MODEL NO. 56-0054  
12-POUND THANKSGIVING DRY TURKEY! COOKING TIME ABOUT 75% TO SAVE ENERGY AND SAVE YOU MONEY!!  
Complete With Glass Tray Page Cookbook

**COUNTER TOP RANGE \$158.55**  
About 30 1/2"x21-3/8"x9-1/8" deep with two 1250-watt and two 2100-watt elements. Porcelain surface in White or 3 optional colours. COLOUR \$5.00 EXTRA

**CANADIAN GENERAL ELECTRIC KITCHEN BUILT-INS**



**BUILT-IN OVEN \$259.25**  
Model J53CJ. Automatic oven timer, clock and Minute Minder. Oven about 21"x15"x18-1/8". Porcelain broiler pan and rack included. COLOUR \$5.00 EXTRA

**COUNTER TOP RANGE \$158.55**  
About 30 1/2"x21-3/8"x9-1/8" deep with two 1250-watt and two 2100-watt elements. Porcelain surface in White or 3 optional colours. COLOUR \$5.00 EXTRA

**BLOCKBUSTER VALUE!**



**TAPPAN MICROWAVE OVEN \$367.00**  
MODEL NO. 56-0054  
12-POUND THANKSGIVING DRY TURKEY! COOKING TIME ABOUT 75% TO SAVE ENERGY AND SAVE YOU MONEY!!  
Complete With Glass Tray Page Cookbook At Our Low, Low Price.

**COUNTER TOP RANGE \$158.55**  
About 30 1/2"x21-3/8"x9-1/8" deep with two 1250-watt and two 2100-watt elements. Porcelain surface in White or 3 optional colours. COLOUR \$5.00 EXTRA

**KITCHEN LIGHT FIXTURES**

Bulbs Not Included! Also Other Styles...See Our Complete Display!!

- "AB2" 3-LIGHT DROP FIXTURE  
REG. \$13.19  
REG. \$12.50 EACH
- "AB15" COLONIAL DROP  
OUR REG. \$31.48  
REG. \$29.90 EACH
- "S" BALL FIXTURE  
REG. \$5.25  
REG. \$4.98 EACH
- "AB20" ADJUSTABLE PULL FIXTURE  
OUR REG. \$18.35  
REG. \$15.50 EACH

**KITCHEN RANGE HOODS**

24" or 30" Ducted 2-Speed Models!!  
**\$3385 EACH**

Streamlined styling! "X" series with light and 2-speed fan. Assorted colours.  
3-SPEED RANGE HOODS ALSO AVAILABLE!

**VANITY CABINETS**

WIDE SELECTION OF SIZES AND STYLES AVAILABLE!!!

	NATURAL BIRCH	WESTMOUNT HERITAGE	PREFINISHED ACADIAN	PIONEER BIRCH	SHERWOOD BIRCH	DALEWOOD ELM OR PINE RIDGE
24" Cabinet no Top	\$53.40	\$59.35	\$57.15	\$66.30	\$72.60	\$80.70
30" Cabinet no Top	\$57.85	\$64.60	\$61.95	\$72.55	\$78.85	\$87.60
36" Cabinet no Top	\$62.60	\$69.90	\$67.15	\$78.90	\$85.20	\$94.55

Vanity Cabinets are ready for 18" wide top (not included). Units for 23" wide top also are available. Enquire today.

**4'x8' TILEBOARDS**

For The Kitchen Laundry Room Workshop Bathroom  
**\$819 SHEET**

Economy White With 4"x4" Black Scoring

TILEBOARDS IN ASSORTED SCORINGS 1x1", 2x2" and 3x3". Many patterns and colours.  
**\$16.35 SHEET**