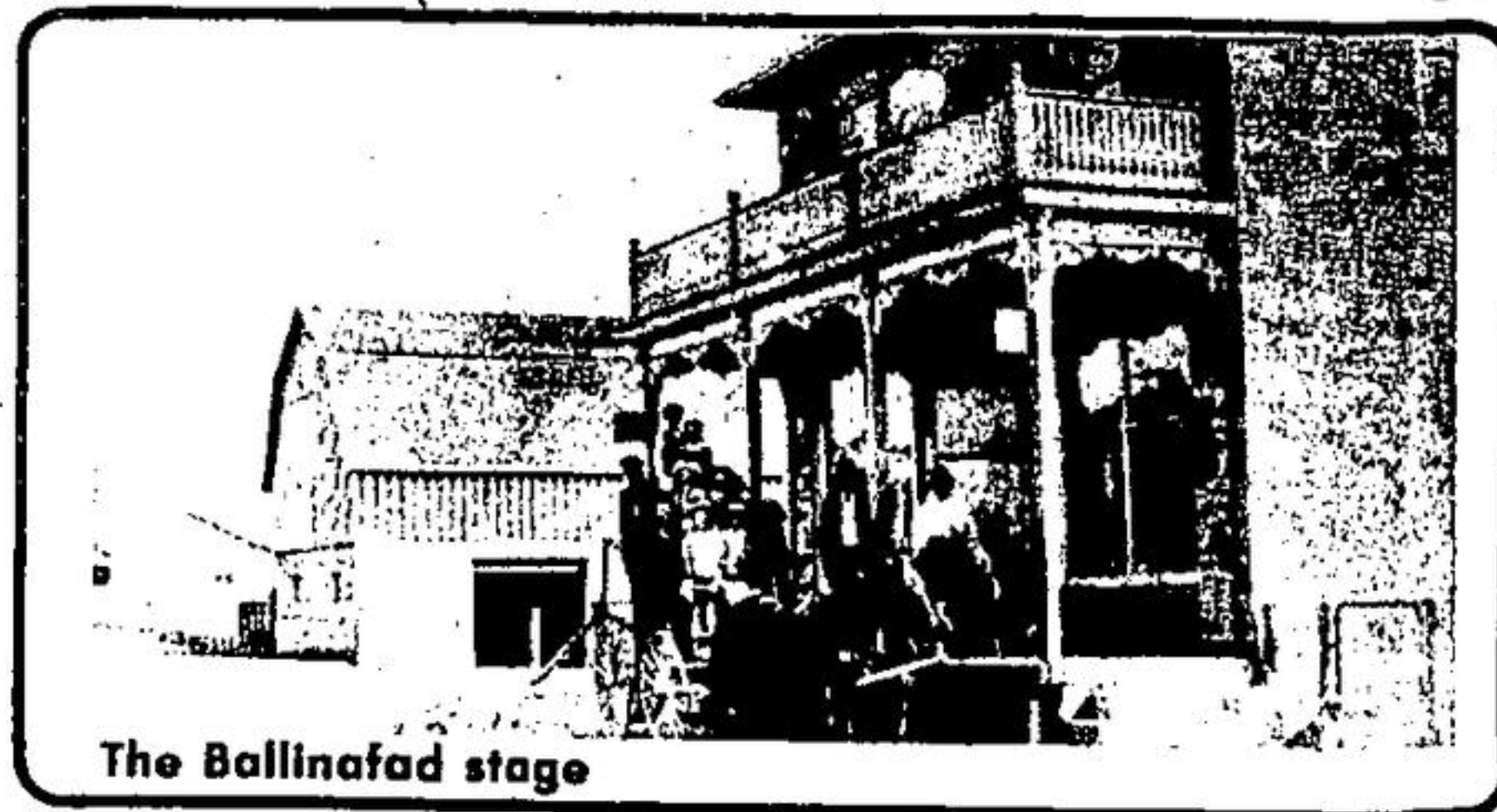


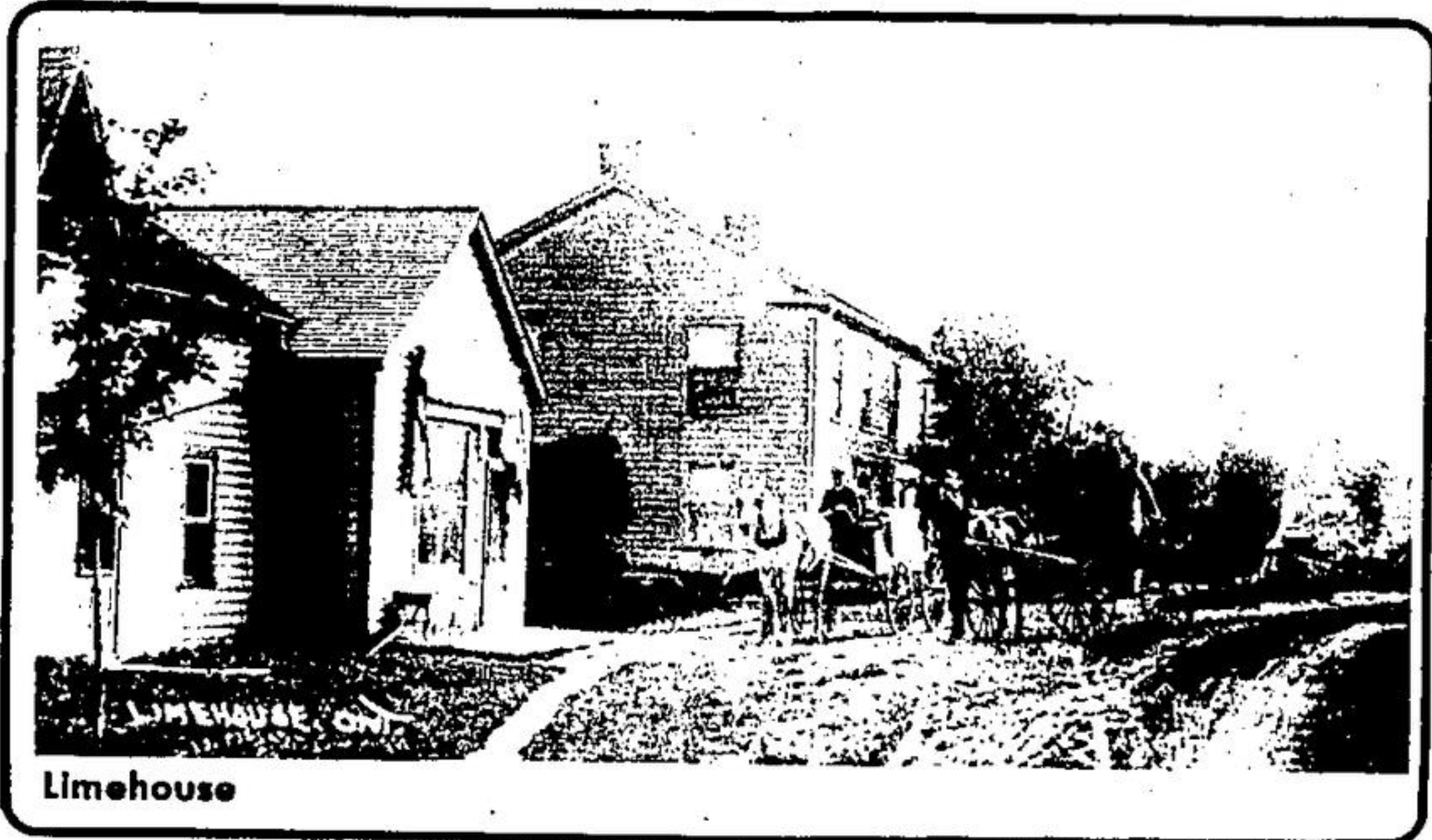
PIONEER DAYS



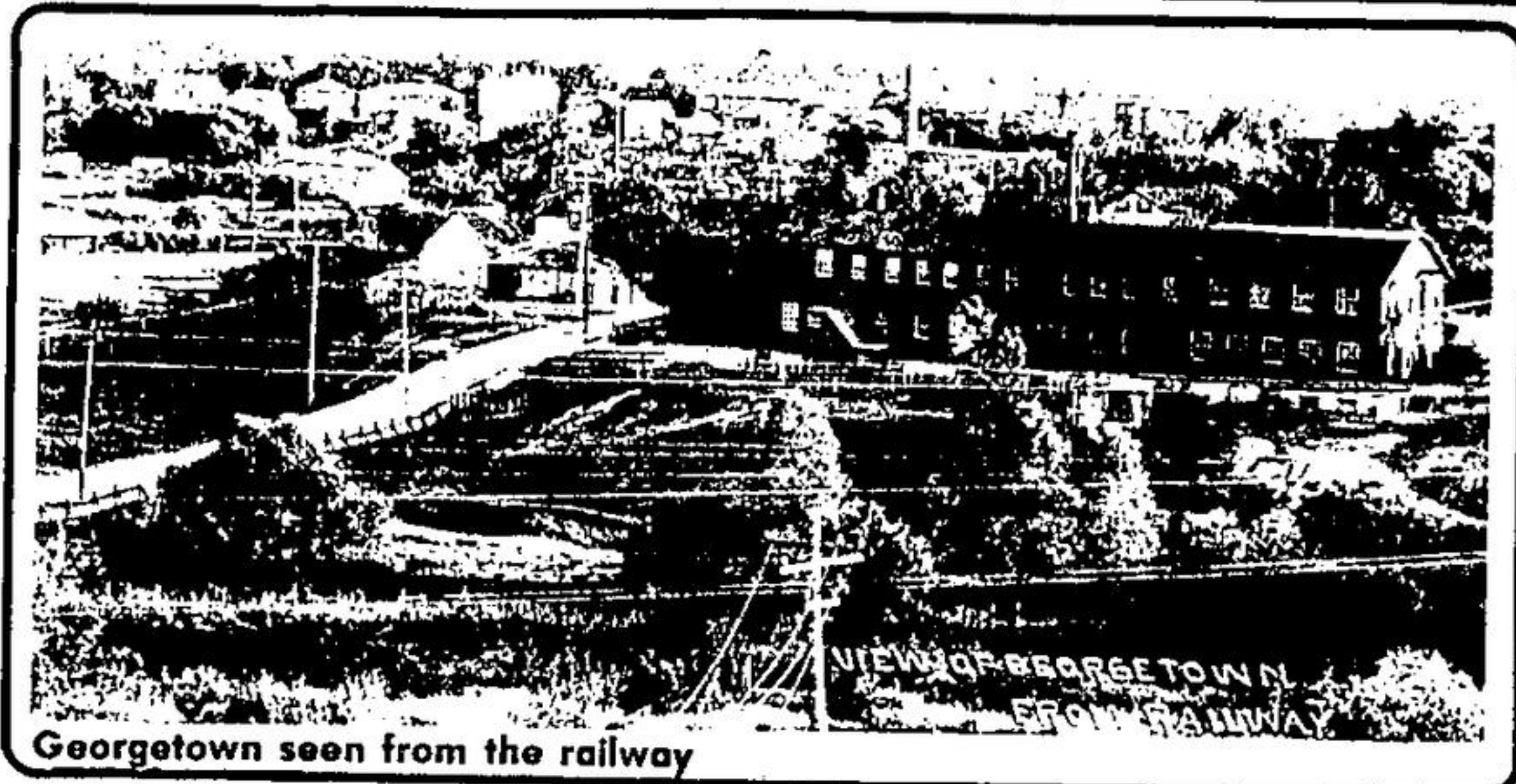
What did this area
look like
back then?



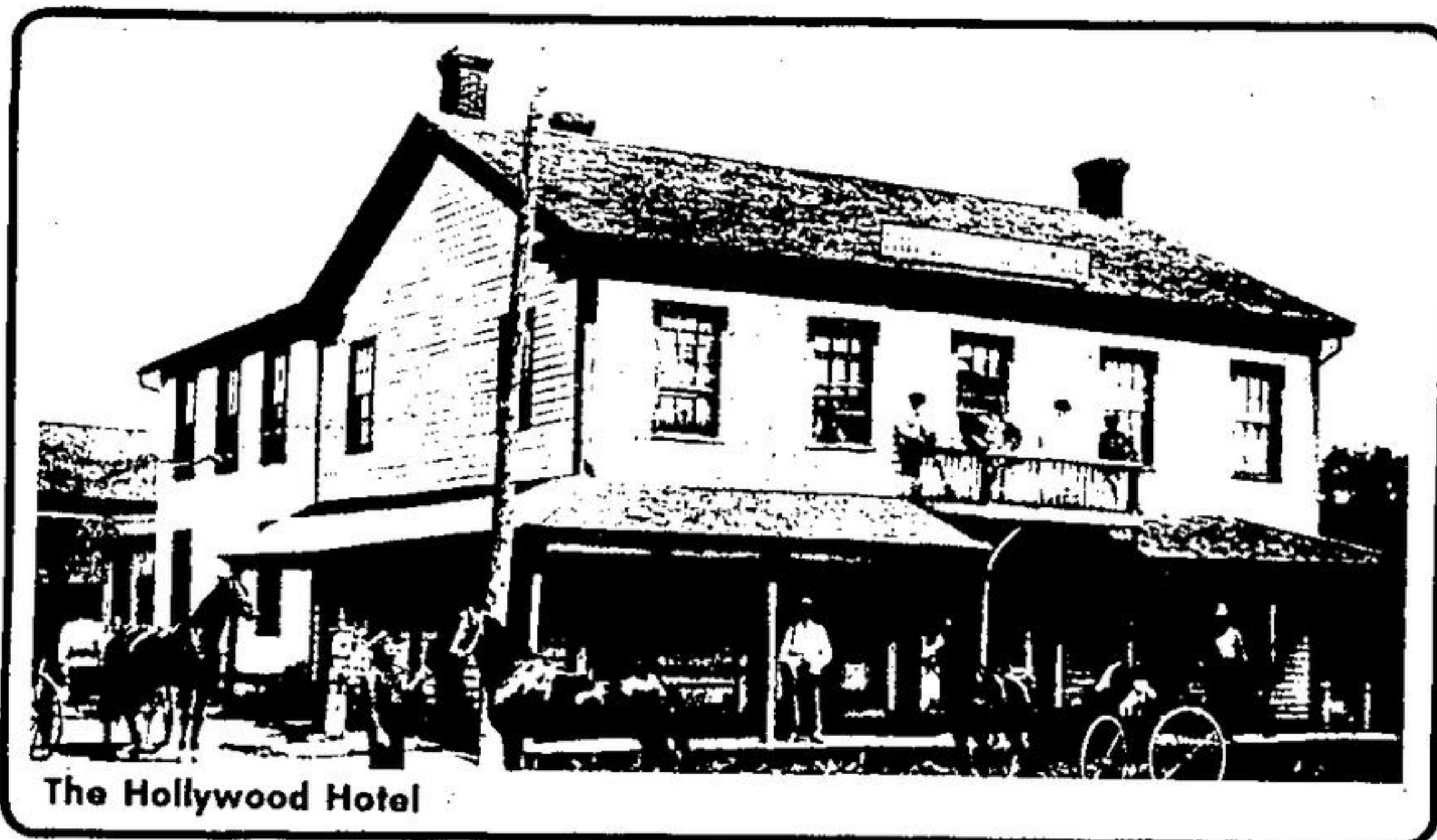
The Ballinacree stage



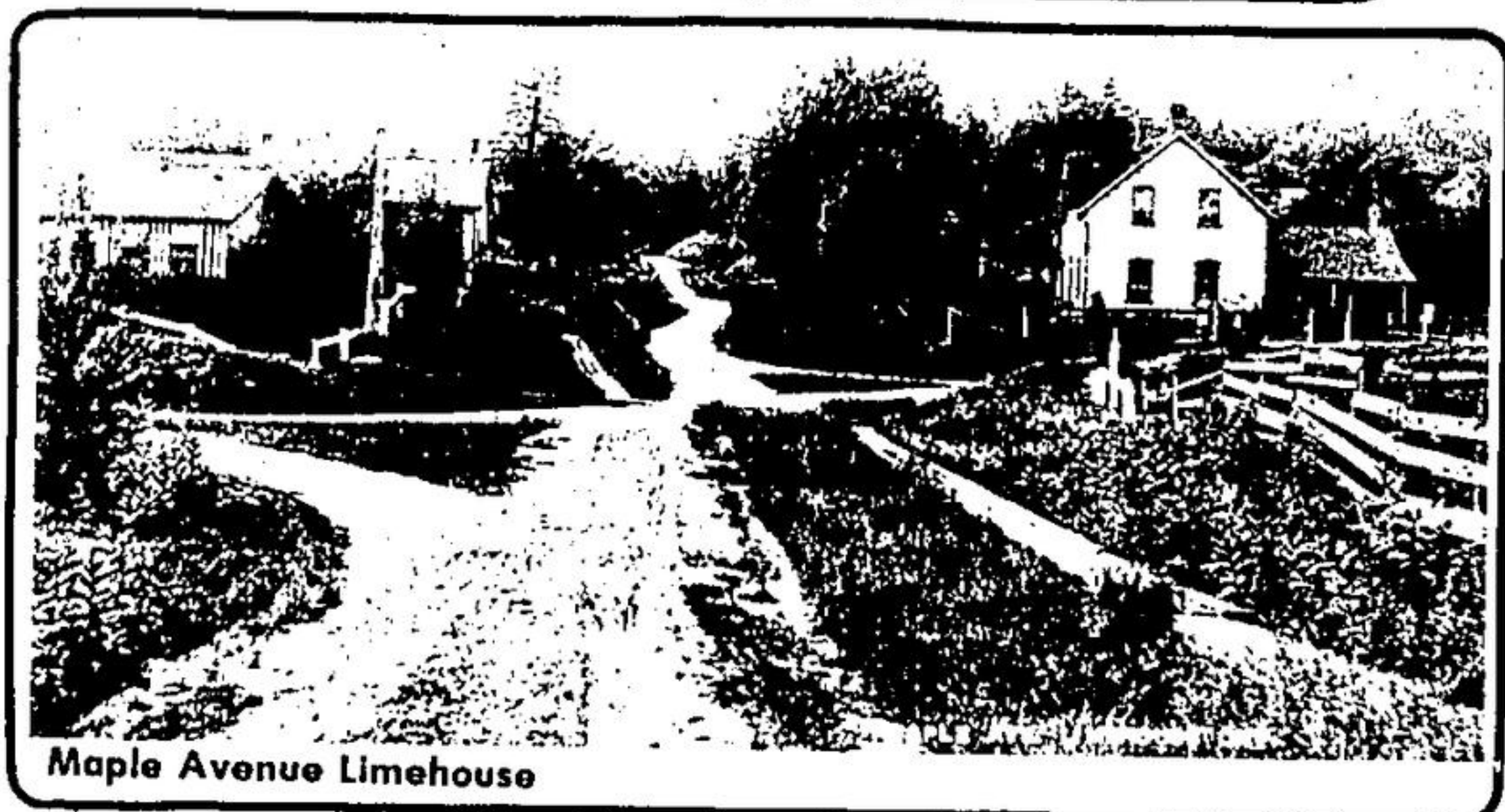
Limehouse



Georgetown seen from the railway



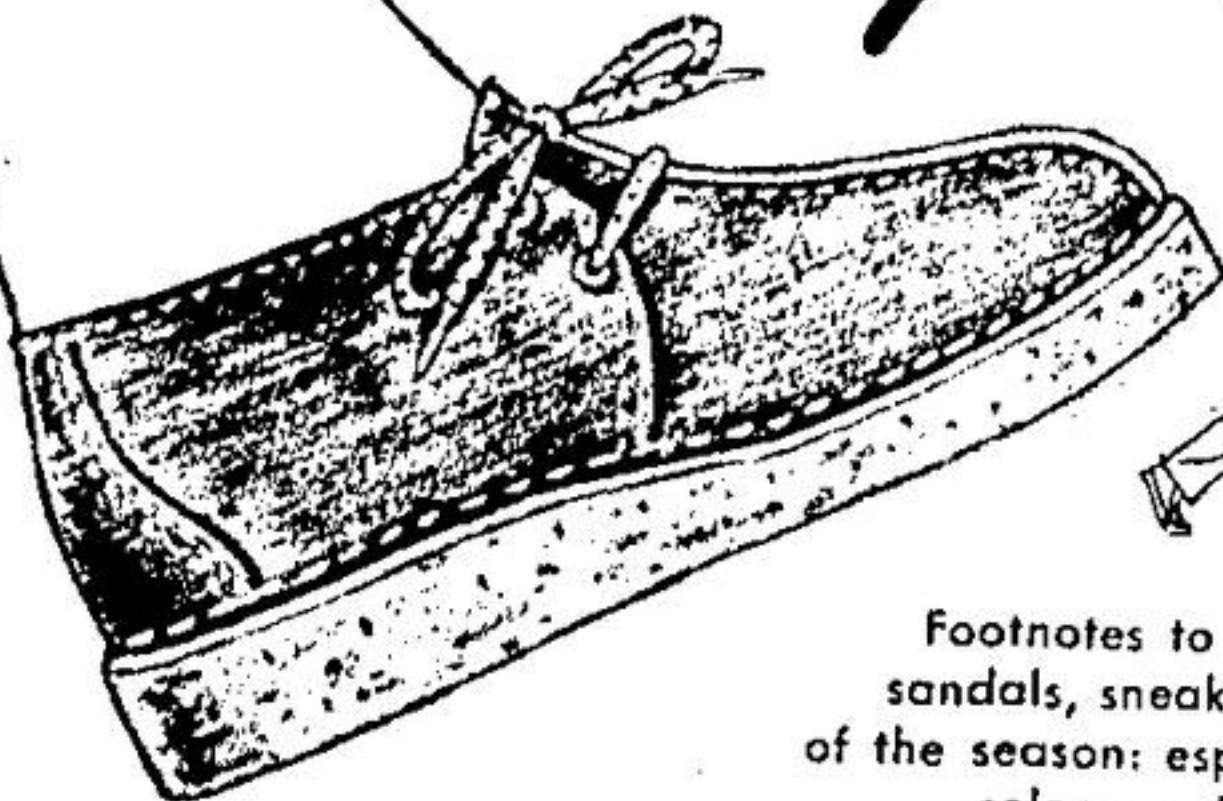
The Hollywood Hotel



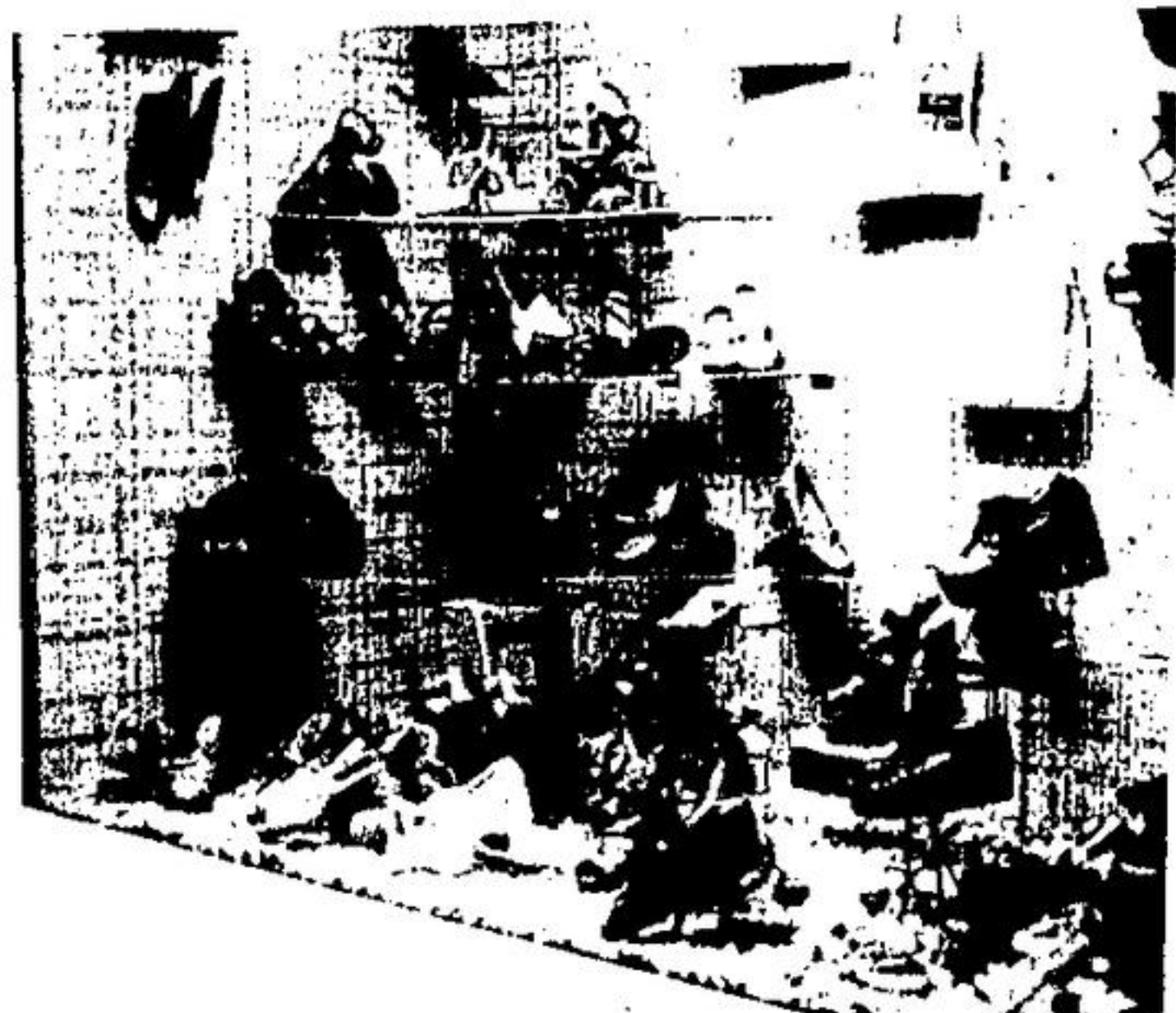
Maple Avenue Limehouse

FLETCHERS PIONEER DAYS

*Casual stepping
through Summer*



Footnotes to casual fashion. The classic sandals, sneakers and slip-ons . . . plus the hit of the season: espadrilles in brightest colors . . . for everyone in the family!



THE DISPLAY IN OUR FRONT WINDOW IS JUST A SAMPLE OF OUR GREAT SELECTION OF FABULOUS QUALITY SHOES.



**JUNE 24-
25 - 26, '76**

MEN		LADIES	
WALLABEES	\$29 ⁹⁹	LADIES' WALLABEES	\$29 ⁹⁹
NORTHSTAR JOGGERS	\$14 ⁰⁰	SLIPPERS	1/3 OFF
HUSH PUPPIES	\$16 ⁰⁰	CELEBRITY AND NATURALIZER	
ALL DRESS SHOES	20% OFF	DRESS AND CASUAL SHOES	20% OFF
CHILDREN		LADIES' PURSES	
BONNIE STUART BABY BOOTS	\$8 ⁸⁸		
CHILDREN'S NORTHSTAR JOGGERS	\$10 ⁰⁰	1/3 OFF	

102 MAIN STREET SOUTH

GEORGETOWN

877-1664