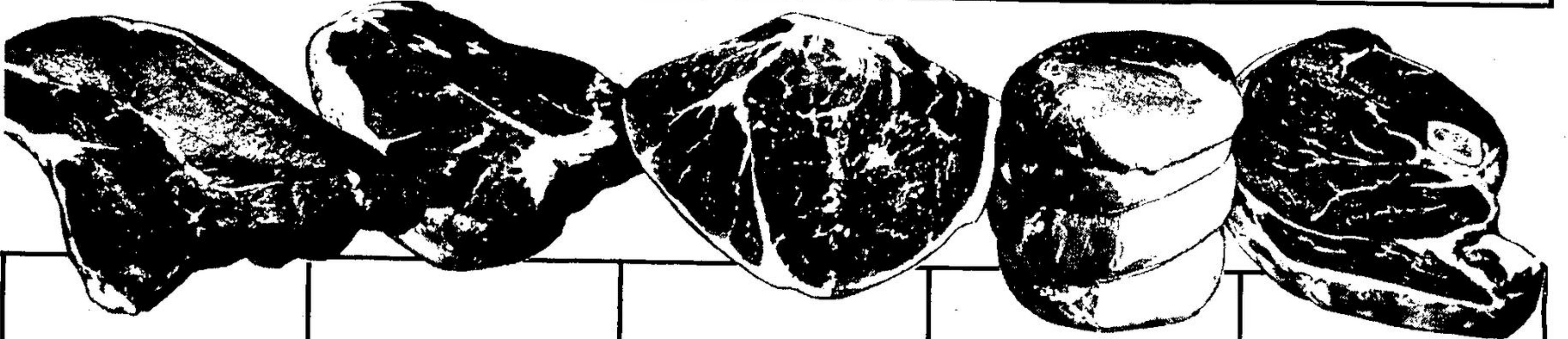


BEAUCOUP lowers beef prices

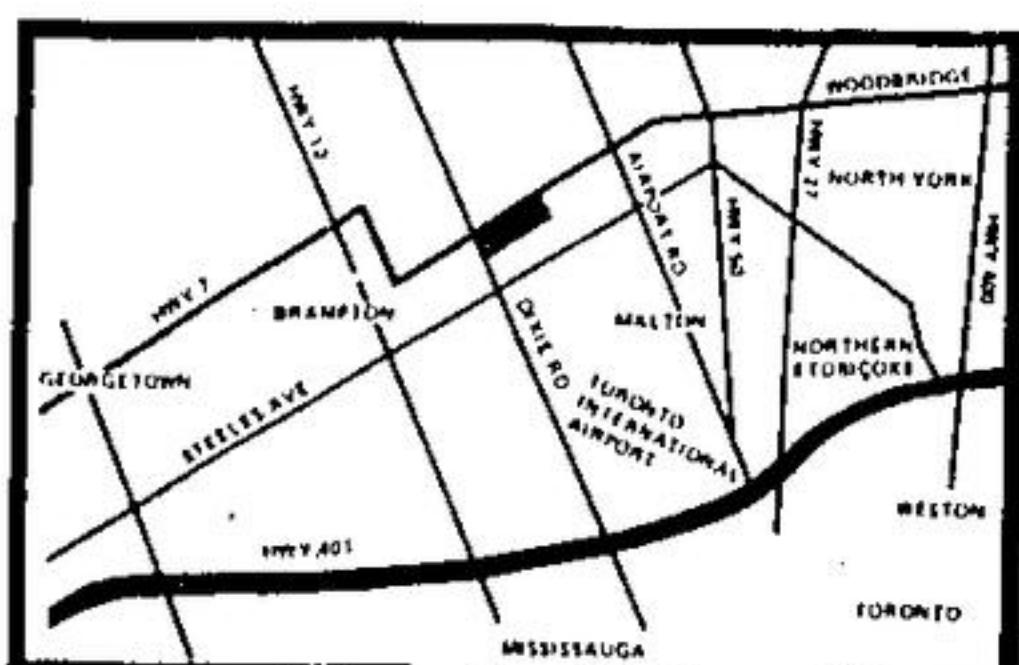


<p>Cut from Canada Grade A Beef Ribs</p> <p>RIB STEAKS</p> <p>\$1.26 LB.</p>	<p>Cut from Canada Grade A Beef Chucks Round Bone Shoulder or</p> <p>SHORT RIB ROASTS BLADE BONE REMOVED</p> <p>66¢ LB.</p>	<p>Cut from Canada Grade A Beef Ribs</p> <p>PRIME RIB ROASTS</p> <p>\$1.16 LB.</p>	<p>Cut from Canada Grade A Beef Chucks</p> <p>BLADE ROASTS BLADE BONE REMOVED</p> <p>66¢ LB.</p>	<p>Cut from Canada Grade A Beef Chucks</p> <p>SHOULDER STEAKS</p> <p>96¢ LB.</p>
--	---	--	--	--



<p>Cut from Canada Grade A Beef Hips</p> <p>BONELESS ROUND STEAKS FULL SLICE</p> <p>\$1.36 LB.</p>	<p>Cut from Canada Grade A Beef Loins T-Bone, Wing, or</p> <p>PORTERHOUSE STEAKS</p> <p>\$1.76 LB.</p>	<p>Cut from Canada Grade A Beef Hips</p> <p>RUMP ROASTS BONE-IN</p> <p>\$1.36 LB.</p>	<p>Cut from Canada Grade A Beef Hips</p> <p>ROUND STEAK ROASTS BONELESS BOTTOM CUT</p> <p>\$1.36 LB.</p>	<p>Cut from Canada Grade A Beef Loins</p> <p>SIRLOIN STEAKS</p> <p>\$1.66 LB.</p>
--	--	---	--	---

steaks and roasts are cut from Canada Grade "A" beef, the finest you can buy



**BEAUCOUP LOCATED IN THE
BRAMALEA CITY CENTRE**