

Ravine homes are in danger

Another voice has been added to the chorus of complaints centering on the open storm sewer in the ravine below Metcalfe Court in Georgetown and this one comes from the other side of the ravine.

"Foolish" and "absolutely bloody criminal" was how Mrs. Pam Fraas of 344 Delrex Blvd. described the remarks by the works committee reported in the press that the open storm sewer was not causing the erosion and that the committee had not ventured down into the ravine to inspect the damage first hand.

"They only saw it from Delrex Blvd.," Mrs. Fraas told the Herald in an interview last week at the bottom of the ravine. "From the top it doesn't look too bad if you hadn't seen the rest of it."

"Nobody has to be an

engineer to see the creek is washing away the land," Mrs. Fraas said. "It's not just Metcalfe Court that's involved." As she pointed up to the even numbered homes on Delrex Blvd. which border the ravine she said: "On this side we've got five or six years before it hits us. Why wait that long?"

Mrs. Fraas has been living since 1969 at her home at Delrex Blvd. She said that back then the creek was "six or seven inches you could step over it."

But now the banks are more than six feet deep in places, wider across than ever before and "getting worse and worse," she said.

She pointed out a pair of tall Beech trees on opposite sides of the creek that have had their roots exposed and are in

danger of toppling over. Other trees have already fallen to the bottom of the creek and more are in danger of doing so, she said. "It would be a shame to lose it all."

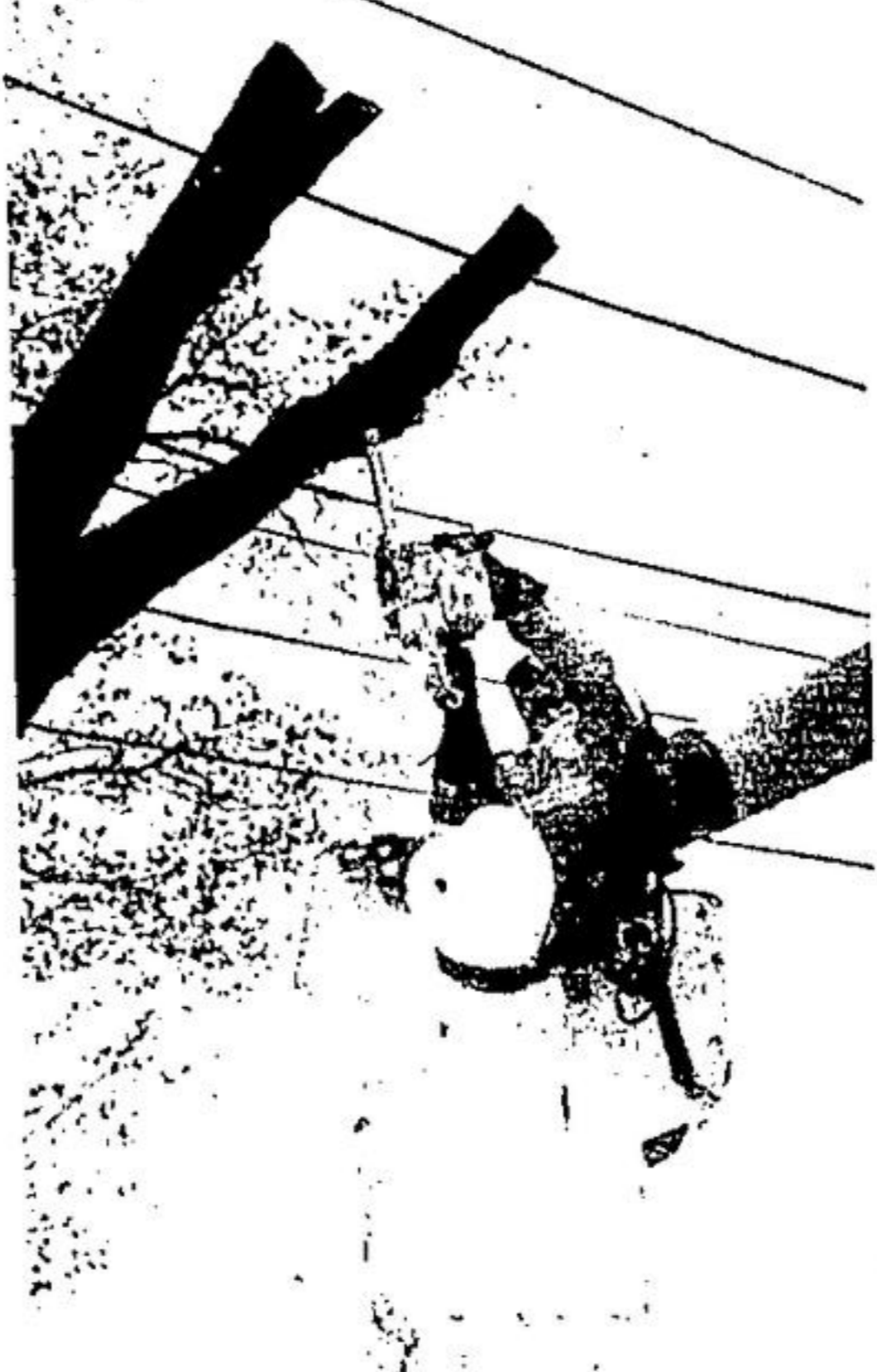
To solve the problem will require the installation of a pipe to entirely enclose the creek from the intersection of Delrex Blvd. and Metcalfe Court to where the creek enters Silver Creek near the sewage plant, Mrs. Fraas said, adding that although "that'll cost a fortune, it will cost even more in the future."

The \$12,000 budgeted for the construction of an enclosed pipe "is just a drop in the bucket," she said.

The area is also a hazard to young children, she said. Last year a young child who had fallen off the bank was unable to get out until his parents

came to rescue him, she said. Other children cut across the ravine on the way to George Kennedy School, she added.

"As much as I like the open creek," she said, "it needs to be covered." Retaining walls at the edge of properties "are no use." You can see the retaining walls falling down," Mrs. Fraas said as she pointed



SUNDAY'S SNOWSTORM caused minor power failures through all of Halton Hills. Pictured high above Halton Rd. 3 near Ballinacree, Hydro lineman Gerry Garvey uses a motorized chain saw to cut away tree branches which threatened the power line.

Highway snow-ploughs. Mr. Light promised that the sidewalks on the bridge will be kept clean next winter but the request for better lighting was refused. Someone will have to be killed before any action will be taken by the Highways Dept. according to Mr. Light. A new street light was installed at the east end of the village near Ron Moffat's home.

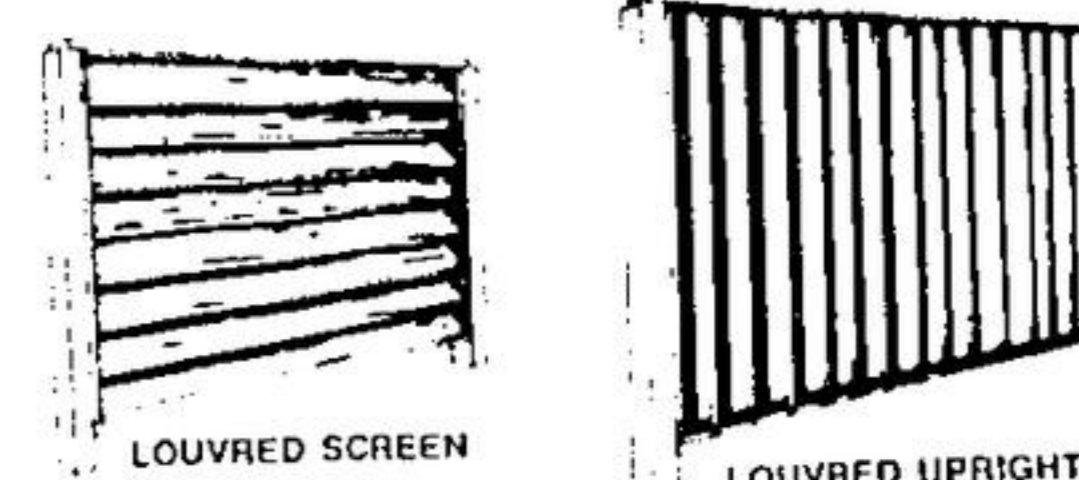
Bob Crawford, Beautification chairman, had had news to report. Of the 12 planters donated last year only three remain. They had been stored but a high wind had toppled them over. He also reported that from now until fall he will be too busy expanding his own business to be chairman of the committee. Anyone interested in helping on the Beautification committee please contact Bob.

Judy Pameroy, Membership convenor, sent out a flyer recently regarding becoming a member of the Norval Community Association but the response was small.

The secretary, Joyce Hutten, and the treasurer, Pearl Guthrie, will purchase a typewriter for the association. Mrs. Guthrie reported that various items had been purchased for use of the group's meeting in the Centre. They were a table for Table Tennis, nets and bats. Another table had been donated. Also purchased were cards, a cribbage board, a crokinole board and checkers.

A sound system will be needed for various activities and could be used for the Teen Club dances. Tom Pettinill was appointed to look into the costs of purchasing one.

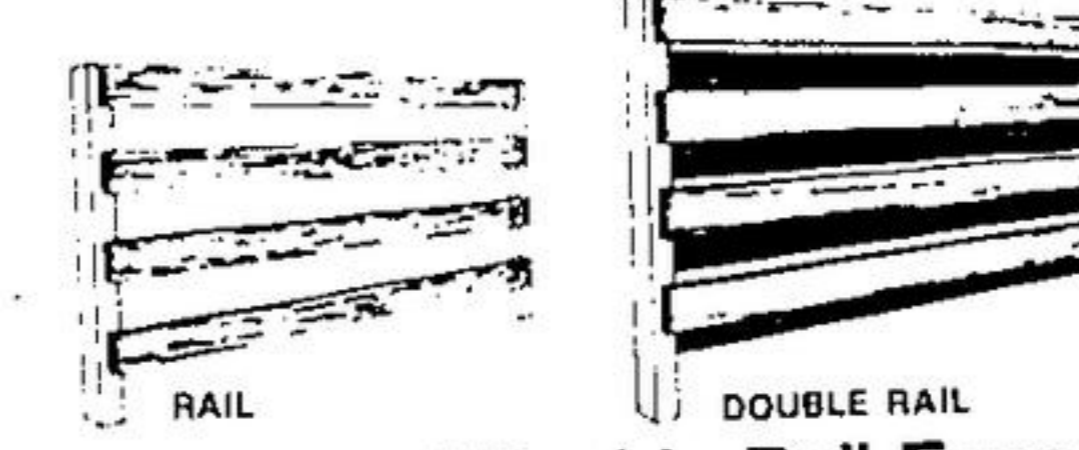
A discussion was held on how to raise the \$50, a month rent and it was decided that, beginning May 1, each group using the room will pay \$25c for each person attending each week. If the amount is under \$5 the association will subsidize the group with the exception of



Upright and Screen Louvred Fences

Two very popular privacy fences that are fast and easy to build. Both the Louvred Screen and Louvred Upright fences come in 4, 5 and 6 heights. 4' x 4' posts are set apart at 8' centres on the Louvred Screen and at 5' 1" centres on the Louvred Upright. Louvres for both the Screen and Upright fences are 1' x 6' and 2' x 4' rails, top and bottom tie the fence together.

4' HT. LOUVRED SCREEN \$216 Lin. Ft.
4' HT. LOUVRED UPRIGHT \$285 Lin. Ft.



Single and Double Rail Fence

The single and double rail fences are two of the simplest to build. The single rail is available in 3 and 4 heights. The double rail fence gets its name from having rails on both sides and comes in 4, 5 and 6 heights. 4' x 4' posts are set apart at 8' centres in all rails are 1' x 6' x 8.

4' RAIL 83c Lin. Ft.
DOUBLE RAIL \$143 Lin. Ft.

Buildall Outdoor Paint

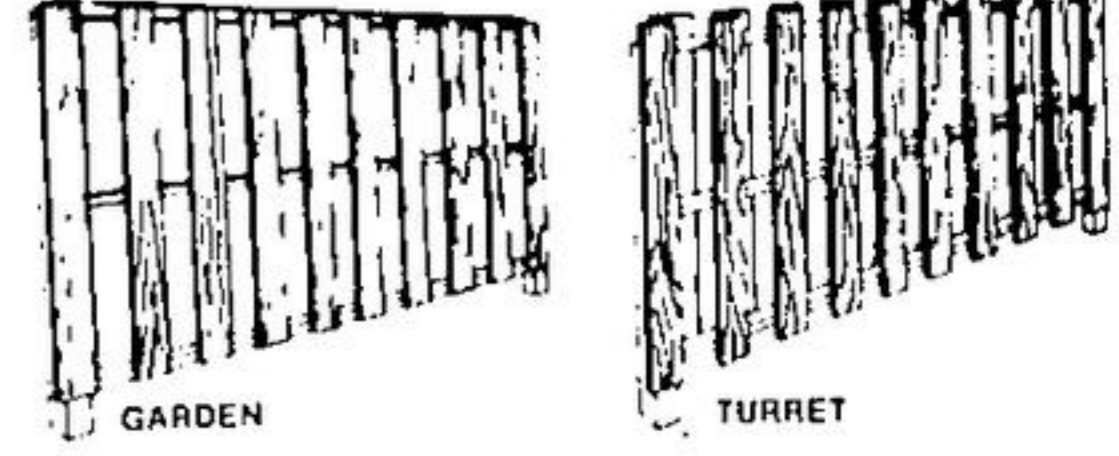
... what the best dressed homes are wearing

Transform your dull, blah-looking house into a beautiful like-new home with easy to apply Buildall Outdoor paint. Buildall Outdoor paint is equal in quality to the best brands but is not nearly as costly. One gallon covers approximately 600 square feet.

RED WOOD \$8.95 GAL.

Getting it done is half the fun. Buildall makes it easy!

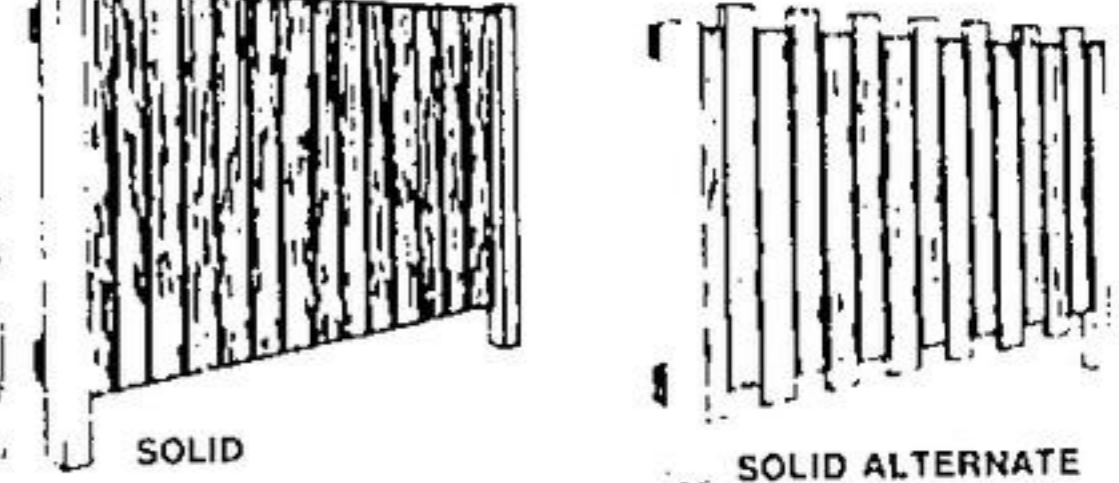
It's great to plan all those home renovations, like building a rec room, adding a bedroom, a green house, a den or re-decorating the living room. Yes, it's great to plan, but the fun starts the moment you actually start doing the job. At Buildall we show do-it-yourselfers just like you, that getting it done is half the fun. Whatever your project, just think how proud you'll be when you tell people you built it yourself. All it takes is a little confidence, some advice and the right materials from Buildall. Our home improvement materials are the best your building dollar can buy and they're priced right, too. Our helpful how-to-do-it advice is friendly and knowledgeable. Stop planning and start building - cause getting it done is half the fun and Buildall makes it easy!



Garden and Turret Fences

The Garden and the Turret fence are two of the most popular privacy fences you can build. Both come in 4, 5 or 6 heights. The 4' x 4' posts set apart at 8' 1/2" centres are joined top and bottom and in the middle by 2' x 4' rails. The 1' x 6' boards on the Garden style fence are capped at the top with a 1' x 6' board. The Turret style fence gets its name from the way the boards rise above the top rail and below the bottom rail to appear like turrets all along the fence.

4' HT. GARDEN \$242 Lin. Ft.
4' HT. TURRET \$240 Lin. Ft.



Two solid privacy fences you'd like

The Solid and Solid Alternate style fences come in 4, 5 and 6 heights. Both fences have 4' x 4' posts set apart at 7' 2" centres, joined by 2' x 4' rails top and bottom. 1' x 6' boards spaced 1" apart are used on both fences. On the Solid style these boards are flush top and bottom. On the Solid Alternate the height of the boards are staggered 3" across the top and the bottom.

4' HT. SOLID \$212 Lin. Ft.
4' HT. SOLID ALTERNATIVE \$212 Lin. Ft.

Olympic Stain

You finally finished your big fencing project. Now you're ready to stain it with Olympic Stain, just to be sure. Paint covers up wood's natural beauty. Olympic Stain brings out its natural texture and beauty. It penetrates, protects, allows the wood to breathe so it will never crack, peel or blister. Olympic Stain is so easy to apply even the kids can help. Available in dozens of semi-transparent or solid colors.

Norval News... Norval makes full use of school

Another successful dance was held by the Norval Community Association at the former Riviera Club, Norval, on Friday evening, April 23, with about 400 people enjoying the dancing to Bob Bettridge and his "County Classics" band. The highlight of the evening was MPP Julian Reed who sang four numbers in his usual fine manner much to the delight of all those attending.

Hugh McFarlane, chairman of the Norval Community Association, welcomed the guests, and Pat Patterson, chairman of the dance committee, made announcements and introductions. Other members of the Dance Committee were Marie Carney, Mary Robinson, George Smith, and Jamie Cunningham. Refreshments were served about 11:30 to 12 p.m. Reports indicated an excellent party and many are looking forward to the next dance in November.

committee meet with MPP Julian Reed to see if there is any action that could be taken to overcome the "red tape" that seems to be bogging down the project.

Recreation chairman, Tom Pettinill, reported that four groups are using the community centre and are going well. They are, a Table Tennis Club on Monday evenings under George Campbell, the Norval Neighbours Club, a senior citizens group under Mrs. Dorothy McLean, who meet every Wednesday afternoon with a membership now of 30. Yoga, sponsored by the YM-YWCA, with Mrs. Mitch DeSylva as instructor, on Wednesday evenings, and the Teen Club under Mrs. Evelyn Hedley have had several successful dances with 40 at their last dance.

The Teen Club have their own executive: David Baile, president; Joanne Pegg, treasurer; Charlie Anger, charge of records; Lisa Guthrie, Allison Browne and Joanne Pegg, charge of pop; Bruce Cunningham, planning committee. Plans for other recreational activities were discussed.

Hydro chairman, Fred Howse, reported that he had met with Mr. Bert Light of the Ontario Highways Dept. to request that they install better lighting at the bridge. Light pointed out that Norval citizens have to walk on the highway in winter as the sidewalks are snow covered or are snow covered from the

Halton Hills council accepted the proposal from the Norval Community Association for Norval groups to use the Norval School Community Centre. Communications chairman, Pat Patterson, presented the proposal to Halton Hills Recreation Committee then it had to go to council for approval.

The agreement is that the Norval Community Association will pay \$50 a month rent for the use of one room and the kitchen for ac-

Water chairman, Jim Lagerquist, reported that the regional government had received a letter of commitment from George Kerr's office regarding a grant for water for Norval but the letter was rather ambiguous and needed clarification. It was suggested that the water



HAPPY 92ND BIRTHDAY wishes were extended to Estelle A. D. Keenan recently on the occasion of her very special birthday. Mrs. Keenan, who lives with her daughter, Hope Keenan on Rexway Drive, was born in Fishponds, a tiny village just outside Bristol, England. She moved to Canada in 1914. She and her husband lived in Toronto for a number of years prior to moving to the Georgetown area.

Mrs. Julian Reed, wife of Halton-

Burlington MPP Julian Reed, presented Mrs. Keenan a special plaque from the provincial government in honour of her 90th birthday two years ago.

Also in attendance were Mrs. Keenan's son John Wesley Keenan, his wife and their two sons David and Peter; daughter-in-law, Mrs. Norman F. Keenan who travelled from France to be on hand; Mr. and Mrs. Frank Begley of Mississauga; plus a number of friends who visited throughout the day.

Guides, Brownies, Scouts and Cubs. If they wish to use the room there will be no charge. This decision will be reviewed as necessary.

A side from a few growing pains the Norval School Community Centre is off to a good start.

The next executive meeting will be held on Tuesday evening, May 18.

The Young Peoples and Teen Club of Norval United Church assisted in the Good Friday church service for the Huttonville-Norval United Church charge held in Huttonville United Church. They presented a play "Who Killed Jesus" and sang two selections. Rev. R. Walter Ridley conducted the service.

Norval United Church Teen Choir will conduct the church service at Huttonville United Church next Sunday, May 2. It will consist mostly of musical selections by the choir with readings between the numbers.

Rev. R. Walter Ridley attended the Inter-Church World Development Education Planning Conference held in Toronto on the weekend. Delegates attended from all provinces of Canada. Mr. Elgin Cunningham of Brampton conducted the church services at Huttonville and Meadowdale United Churches in Rev. Ridley's place.

The Couples Club of Norval Cont'd page 18.

The Kentners Dairy Bar

877-4113



Fencing can increase the value and beauty of your home.

Good fences make good neighbours. They also increase the value of your home. A fence can add beauty and privacy to your garden area which makes any home that much more attractive. What a great way to

MACKENZIE BUILDALL ASSOCIATE STORES

Georgetown - 8 James St. Phone 877-2207 Mon. - Wed. 8-6 Thurs. - Fri. 8 a.m. - 9 p.m. - Sat. 8-5

Acton - 12 Church St. Phone 853-1660 Mon. - Thurs. 8 a.m. - 6 p.m. Fri. 8 a.m. - 9 p.m. Sat. 8-5

SCHROEDER CHIROPRACTIC CLINIC

Edward H. Schroeder, D.C.
Wayne F. Singleton, D.C.
Norman C. Cawfield, D.C.
DOCTORS OF CHIROPRACTIC

107 QUEEN ST. E. 459-0685
Brampton, Ont. 24 Hour Service

ERIN OPTICAL

104 Main St. Erin Ont.
833-9972

EYE DOCTOR'S PRESCRIPTIONS FILLED

- Most single vision lenses \$19.00
- Most Bifocal lenses \$39.00
- Photogray lenses \$10.00 extra
- Most plastic lenses \$26.00
- Repair Service - Free Adjustments
- Senior Citizens 10 per cent off

GAS REFUND SPECIAL FOR THE MONTH OF APRIL

\$3.00 will be taken off the price of a complete new pair of glasses for people who have to travel a distance to get to Erin optical.

Open all day - every day, Mon. to Sat. 10-6, Fri. 'till 8:00

UNWANTED USED ITEMS WANTED FOR ROTARY CLUB AUCTION

- Furniture • Garden Tools • Dishes • Small Appliances
- Radios • T.V.'s • Toys • Any Re-saleable Useful Items

Help Rotary Help Your Community
Donate Your Unwanted Items

for pick-up call
877-2522 877-9312
or **877-2924**

PICK-UPS MADE SATURDAYS ONLY