

New town subdivision agreement considered

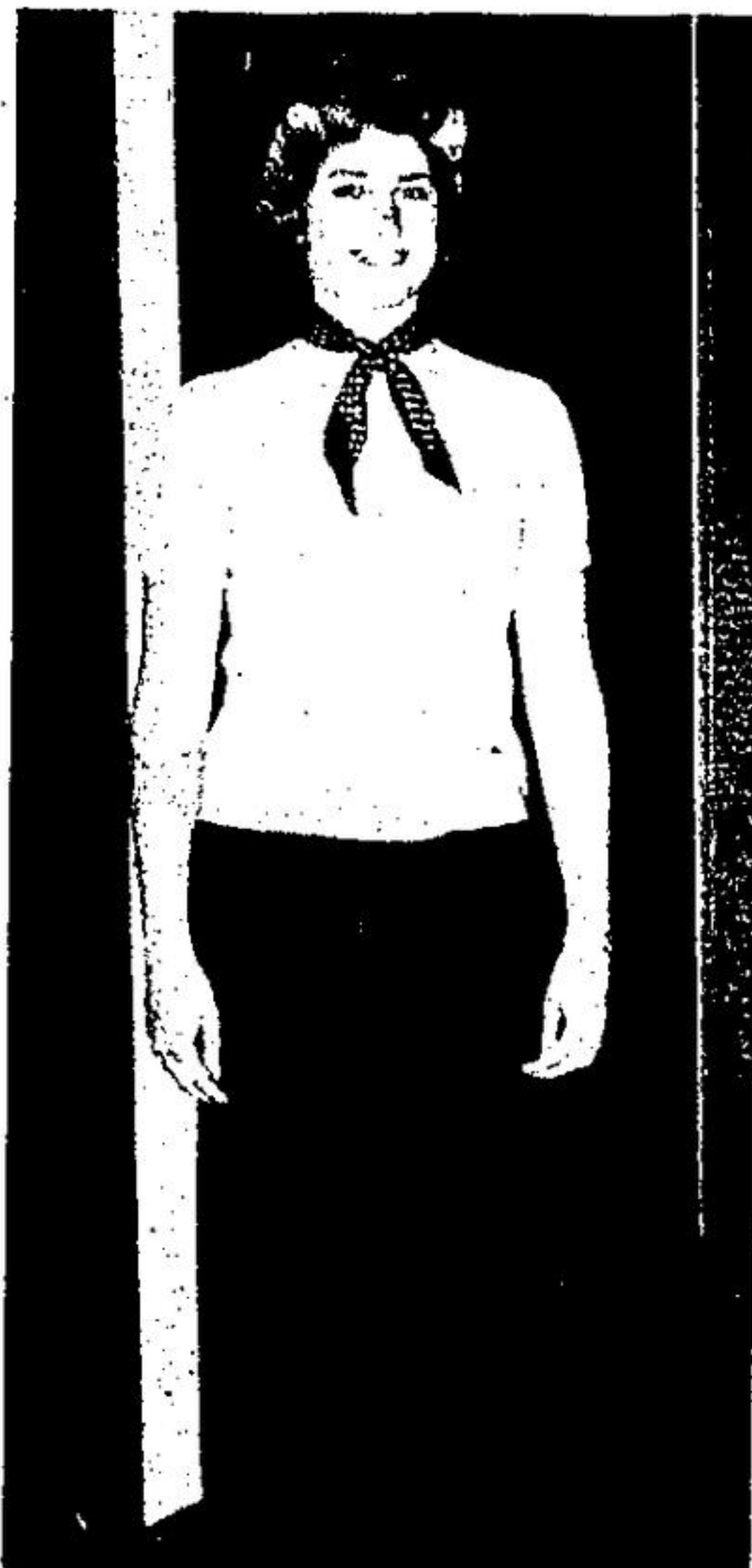
Members of the works committee, Monday made recommendations that the previous town subdivision agreement and subdivision service agreement that was used by the town of Georgetown be revised to form the basis of a new policy regarding subdivisions in the boundaries of Halton Hills.

The problem arose when council was to pass a bylaw that would make the section of road to be used by the new homes on Guelph Street in the east end of town, a public highway.

The committee and works engineer, Bob Austin, were concerned that the necessary clearance certificates had not been issued by the town and that the developer had not come forth with any progress reports.

"The old standard agreement we used spelled out everything relating to the development," explained Councillor Erv Hyde.

The committee wants further information about the procedure it is to follow in the development of the town and the turning over of roads to be used as public streets.



CHERYL GUNBY before...



... and after.

GDHS students discover dress is important for jobs

A touch of class was introduced Friday afternoon much to the delight of four business students of Georgetown and District High School as they spent the latter part of the day at one of Georgetown's newest clothing stores, "Touch of Class".

Barbara Shuttlesworth, owner of "Touch of Class" was approached by the high school and asked to give the girls a few pointers in the do's and don'ts of office attire.

Barbara, with the help of two shop employees, Dorothy Strange and Hen McKay, outfitted the girls, some in pant suits and others in dresses and skirts and explained various aspects of the outfits.

Barbara explained and illustrated on her four enthusiastic models the versatility of such co-ordinates as skirts, sweaters, blouses, pantsuits, jumpers etc. and how a wardrobe, if properly assembled, can be mixed and matched in so many ways that an outfit should never had to look the same.

The Grade 11 students, accompanied by Mrs. McInnis, business education director for the high school, received tips on proper shoes, how to shop

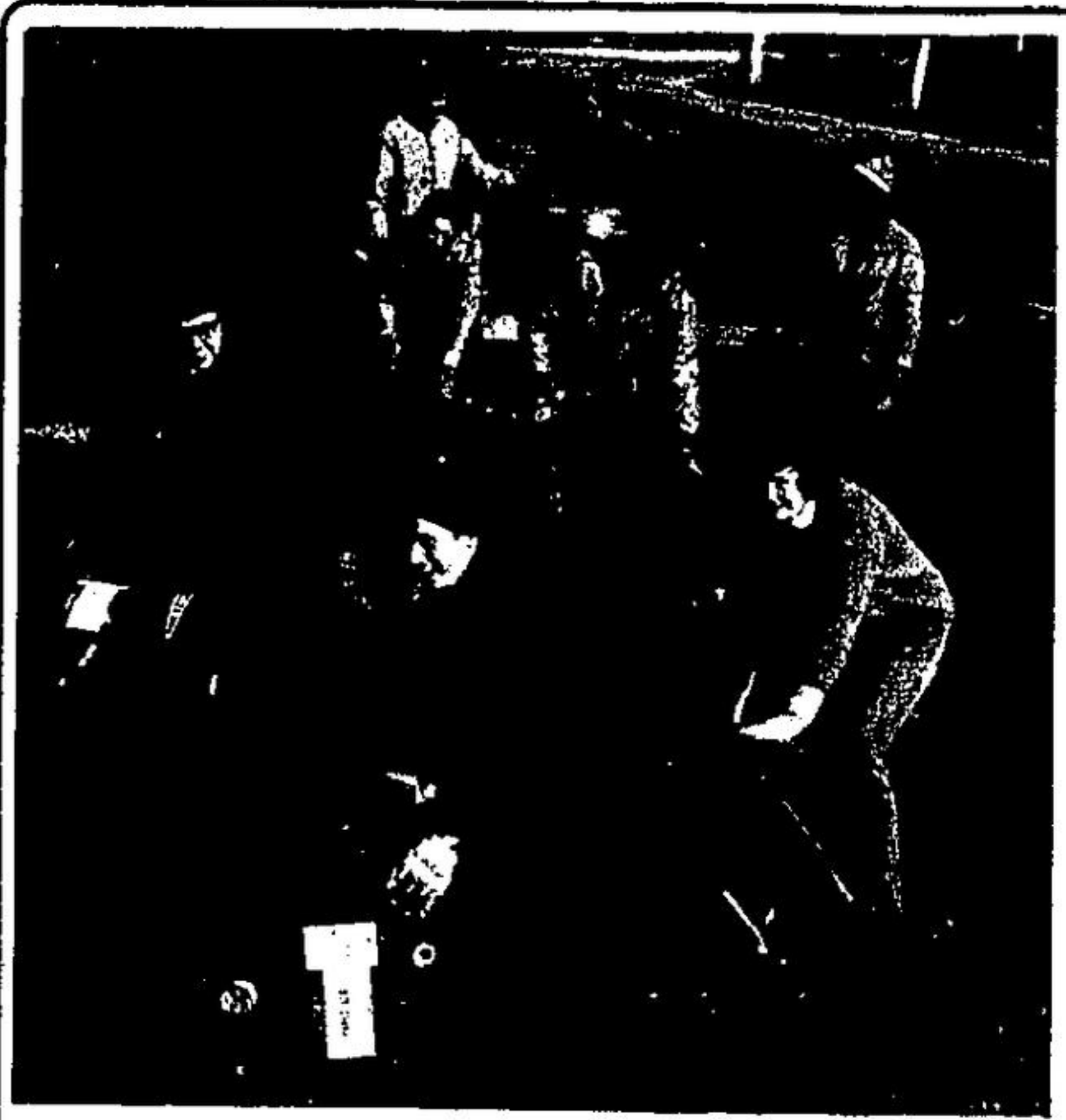
for a wardrobe, and, most important of all, how to become imaginative and creative with their clothes.

It was a learning through experience type of afternoon for Cheryl Gunby, Cathy Clark, Debbie Brioux and Terri Parker, who all now have a much greater knowledge and comprehension of preferable dress for the outside working world. How to, in fact, dress with 'a touch of class'.



STUDENTS FASHIONED FOR BUSINESS. Four Grade 11 students from Georgetown District High School took in an afternoon of fashion tips for business at "Touch of Class" women's store on Main St. Outfitted by Barbara Shuttlesworth, owner of the store are (left to right) Cathy Clark, Mrs. McInnis, business education director at G.D.H.S., Terri Parker, Debbie Brioux and Cheryl Gunby.

Shuttlesworth, owner of the store are (left to right) Cathy Clark, Mrs. McInnis, business education director at G.D.H.S., Terri Parker, Debbie Brioux and Cheryl Gunby.



Pollution Probe collects six tons of metal for recycling

ROLL OUT THE BARREL and help conserve our resources. Georgetown Pollution Probe members were out in force early Saturday morning loading approximately six tons of scrap metal destined to be recycled and re-used.

The metal, consisting largely of used tin cans, has been collected over a number of weeks at Pollution Probe's can depot at 8 McNabb Street from where it has been transported in large metal drums to a storage site on Domtar's property. The drums and the site have all been provided by Domtar, free of charge.

When enough drums have been collected a metal recycling firm in Brampton provides a large container into which about 20 Pollution Probe members were busy loading 150-pound drums into this past Saturday morning.

Anyone wishing to assist in Pollution Probe's recycling program by supplying their compacted, used tin cans, can do so by dropping them off at the can depot at 8 McNabb. The glass depot is just a few doors away at 12 McNabb.

View good, bad examples of erosion

Approximately 16 members of Georgetown Pollution Probe toured various areas along the Credit River Sunday afternoon viewing both good and bad examples of erosion control along the river.

The tour was headed by Ron and Wendy Reid and Beth and Fleming Matheson and, according to Ron, was aimed "at fostering an awareness that erosion can be a problem that affects not only the people living along the Credit but the stream itself."

Their first stop was near St. Alban's church in Glen Williams where they viewed a dramatic example of erosion

caused by man's carelessness. All vegetation on the steep bank on the opposite side of the river has been totally carried down into the river valley as a result of indiscriminate dumping of dirt down the bank.

"This is probably the worst example of erosion on the entire Credit," commented Ron. The erosion, if it continues back, could threaten the cemetery of Union Church.

The group travelled by car between the various locations. One of the better examples of erosion control was shown in Meadowvale East where man-made gabions have been constructed to control the erosion of the river banks.

-- Announcement --

SCHROEDER CHIROPRACTIC CLINIC



NORMAN C. CAWFIELD
Doctor of Chiropractic

Edward H. Schroeder, D.C. is pleased to announce the appointment of Norman C. Cawfield, D.C. to the clinic staff.

The new Doctor of Chiropractic will be re-locating his Streetsville practice to our clinic effective immediately.

The clinic is located at 107 Queen St. E., Brampton and presently has 3 full time Doctors of Chiropractic for 24 hour emergency care.

Zellers SKILLET RESTAURANT

BOOK EARLY FOR SANTA BREAKFAST

Each Saturday 9 a.m.
FROM NOW 'TIL DEC. 20th

MENU

KIDDIES: Bacon, 2 pancakes, butter & syrup
Choice of kiddie beverage
\$1.09

ADULTS: 2 slices bacon, 4 pancakes, butter & syrup, coffee or tea
\$1.50

Purchase Tickets and Book Early Only at the Information Desk

Santa will visit and talk to every child

Georgetown Market Centre

Town raises rent for parks

Rental rates for public parks in Halton Hills will undergo changes pending the passing of a recommendation made by the general administration committee Monday night. It was recommended that family reunions and picnics be booked free of charge however such organizations as commercial, religious, or political groups must pay a \$25 rental for the use of the parks.



vs. BURLINGTON
SAT. NOV. 29th

7:30 P.M.
Game Ticket No. 12
Gordon Alcott Arena

GARRARD PHOTO



NOW OFFERS CIBACHROME

EXCEPTIONAL PRINTS FROM YOUR COLOR SLIDES

75 Mill Street, Georgetown
877-5500

Market Place OPTICAL

● ALL DOCTOR'S PRESCRIPTIONS
For eye glasses filled with utmost care

● EYE EXAMINATIONS
Arranged

● OPEN 6 DAYS A WEEK
To Serve You Better

CALL 877-3562

Georgetown Market Centre

Got A Gift Problem?



SANTA SAYS - There are many ways to express your love for your family at Christmas, but none does it so effectively as the gift of a fine Organ or Piano. Drop into our Guelph St. store and look over the many on display.

OR FOR STARTERS - come in and try our fabulous BALDWIN FUN MACHINE - It's great, the price is moderate and so easy to understand it turns listeners into players in no time.

Barber Piano & Organ Co.

Guelph St. Plaza - opp Seed House