

*Invitation  
to Elegant Living*

Presenting a Selection of Distinctive Homes  
capable of Satisfying the most Discerning Tastes.

# Marywood



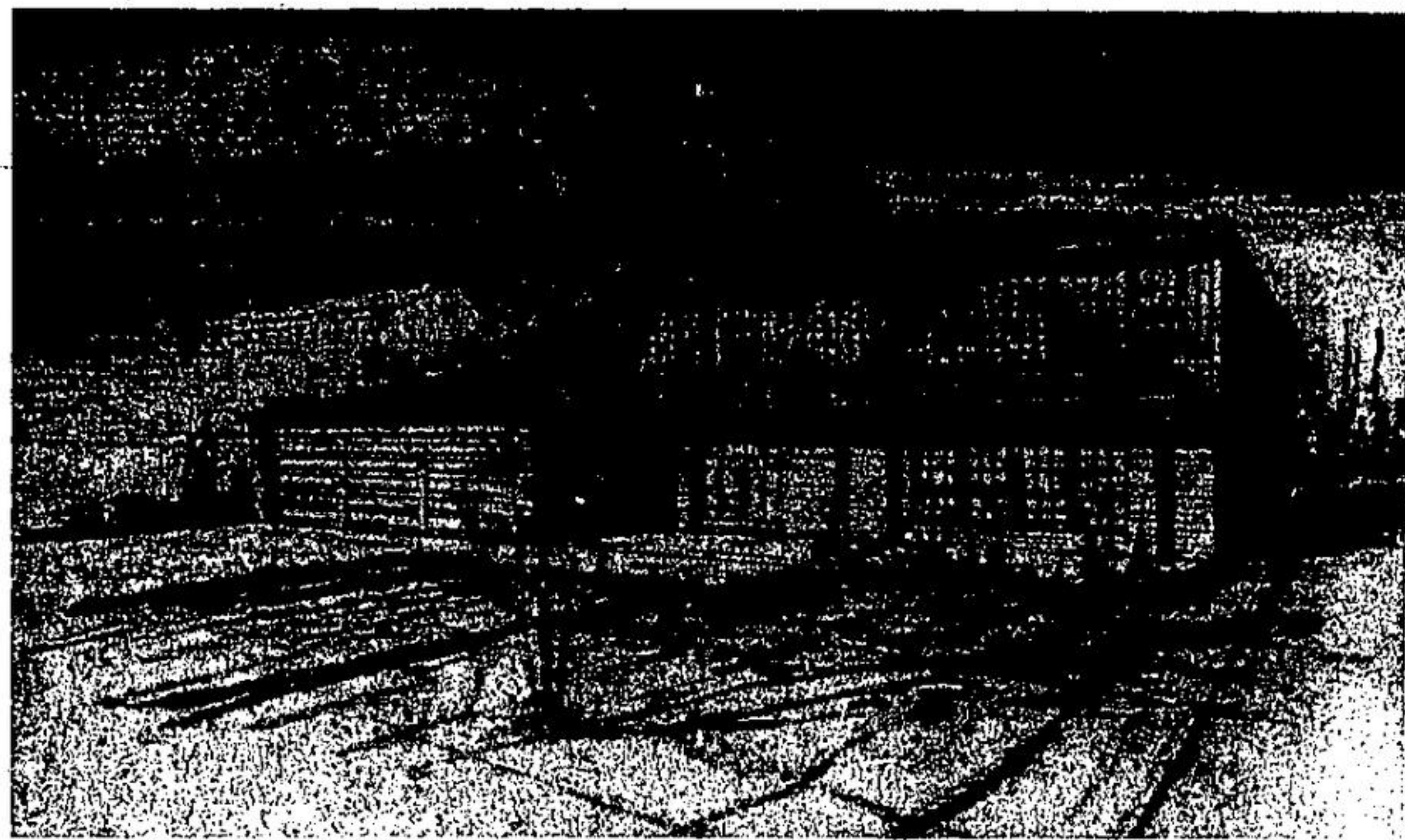
# Meadows

Georgetown's Newest Development



**MODEL  
EASTWOOD**

From the sheltered entrance hall to the charming "L" shaped living room, this low-hung Mansard roof evokes the intimate elegance of England. The convenience of your hostess kitchen will be a perpetual delight to you and your family. The spaciousness of the master suite is complimented by the ideal sizes of the other two bedrooms, all with oversized closet space. This home is ideally set on your own large lot to enhance its picturesque exterior. Completely finished family room with fireplace. Built-in breakfast nook. Floor to ceiling closet doors in choice of colour. English style double-glazed windows with screens. Fully broadloomed, choice of colours. Gas fired forced air heating, ready for installation of air conditioning unit. Insulation to N.H.A. standards. Secondary financing available to qualified purchasers.



**MODEL  
ASCOT**

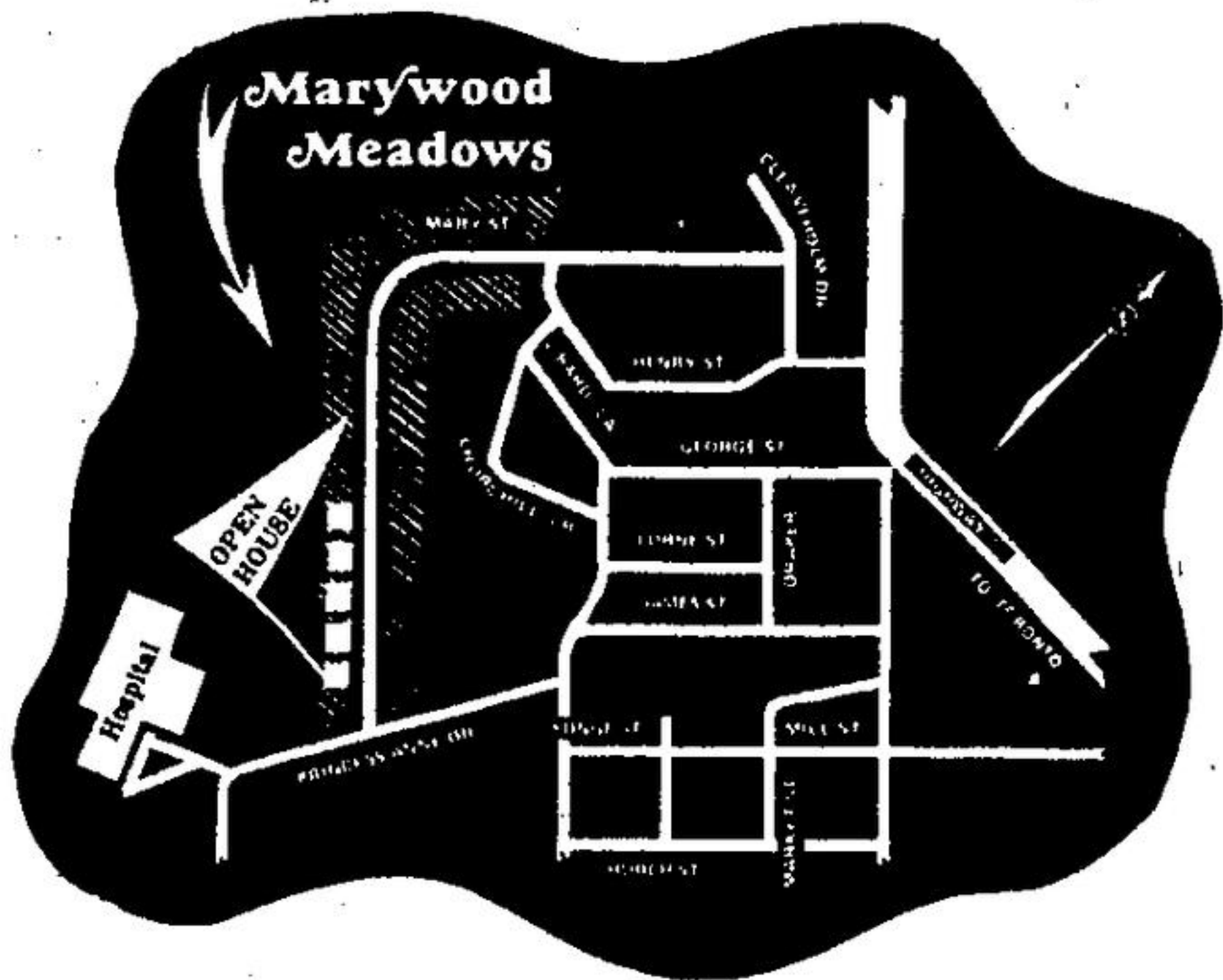
For this two-storey dynamic home you have a double-door entrance. The gracious space in the "L" shaped living and dining room is well served by the ideal hostess kitchen with a built-in breakfast nook. To the rear in the lower level wing is a large family room with fireplace. Family room leads to a large patio. Floor to ceiling closet doors in choice of colour. English style double-glazed windows with screens. Fully broadloomed, choice of colours. Gas fired forced air heating, ready for installation of air conditioning unit. Insulation to N.H.A. standards. Secondary financing available to qualified purchasers.

**OPEN From 10 a.m. to 6 p.m. Weekends (SATURDAY & SUNDAY)  
And 11 a.m. to 7 p.m. Weekdays**

**Choose From 7 Exciting Models**

**DIRECTIONS:** Adjacent to the Georgetown District Memorial Hospital  
Drive West on Princess Anne Drive, Turn Right at Mary Street.

**For Further Information Call Your Exclusive Agents:**



**F** **FOBERT**

and

**JOHNSON  
CARNEY & Co**