



### mix or match vegetables

CUDNEY CHOICE WHOLE POTATOES 19 FL. OZ. TIN, AYLMER DICED HARVARD BEETS, CHOICE SLICED CARROTS or PEAS AND CARROTS 14 FL. OZ. TIN

**4 for 99¢**

Loblaws Ice cream

**99¢** half gallon carton  
all flavours

Robin Hood oats

**89¢** 44 oz. pkg.  
quick or minute

High Park unsweetened grapefruit juice

**39¢** 32 fl. oz. bottle  
from concentrate

Kellogg's Rice Krispies

**69¢** 13 oz. pkg.

Henley dill pickles

**99¢** 64 fl. oz. jar  
whole or Polish

Telley's tea bags

**89¢** 72's pkg.

Loblaws tomato ketchup

**69¢** 25 fl. oz. bottle

Scottie's economy facial tissue

**46¢** 200's pkg.  
2 ply, white

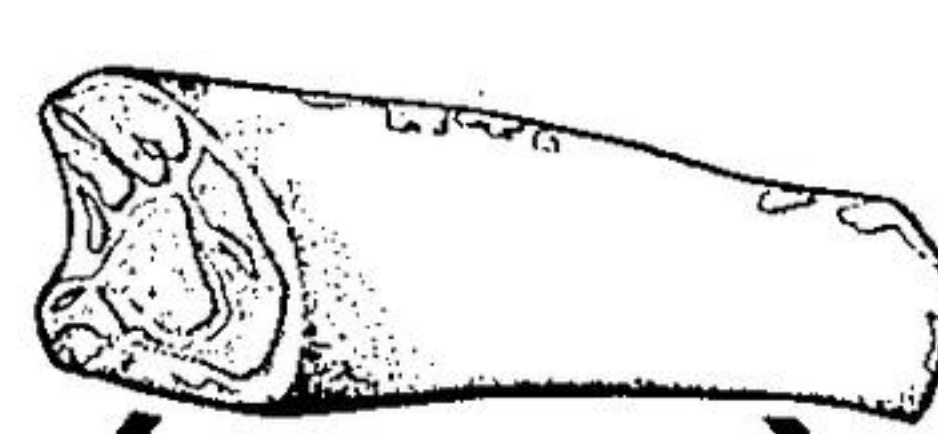
Lady Patricia shampoo

**79¢** 12 fl. oz. bottle  
gentle, protein, lemon glow or protein creme rinse

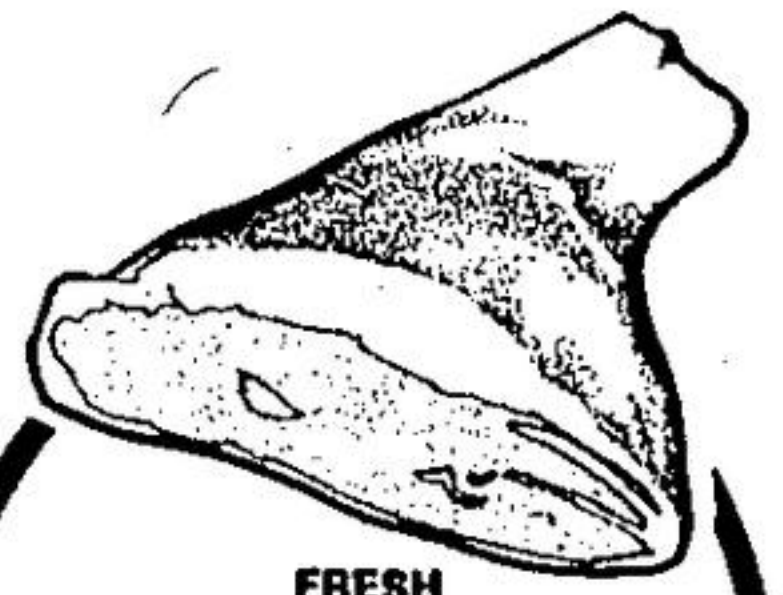
White Swan 2 ply towels

**77¢** 2 roll pkg.  
white, yellow, orange, green or decorated assorted

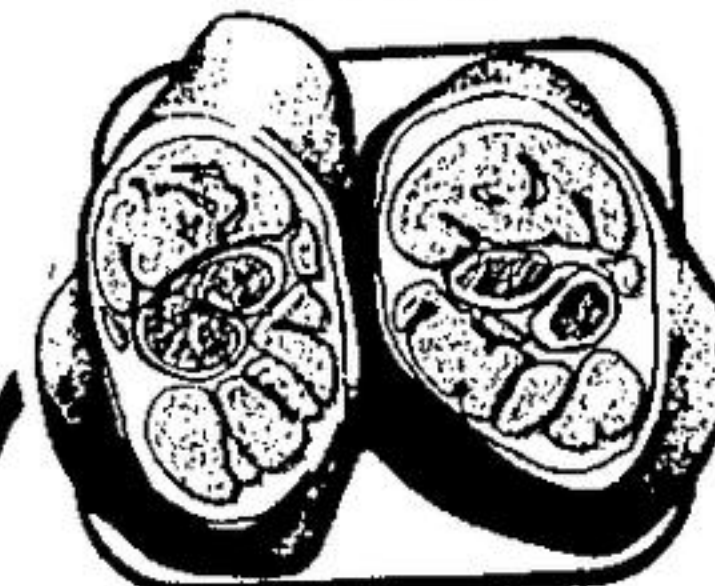
# 15% OFF



FRESH—WILL CUT TO YOUR NEEDS  
whole pork loins  
**99¢** lb.  
reg. price \$ 1.25



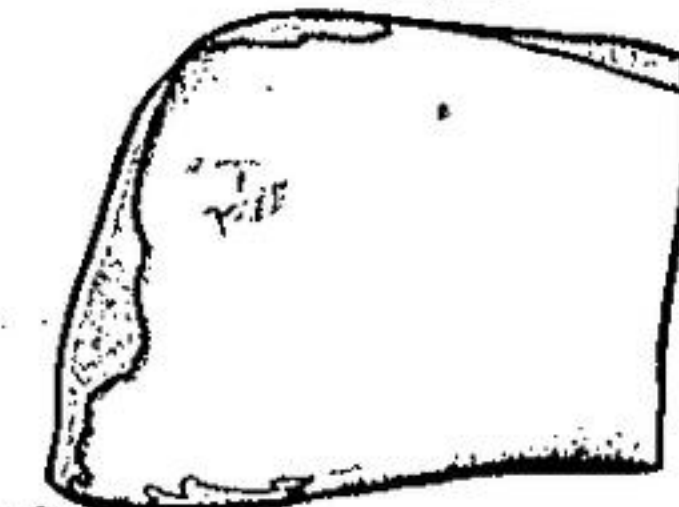
FRESH  
leg o' pork  
WHOLE or SHANK PORTION  
**88¢** lb.  
reg. price \$ 1.00



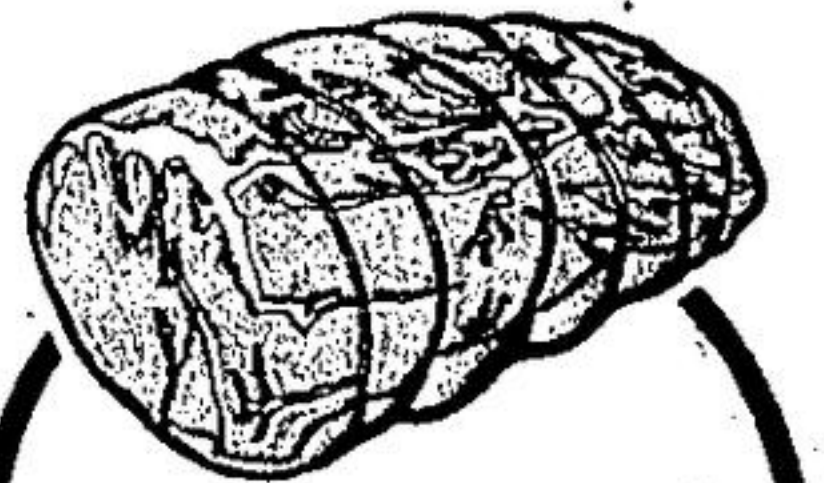
meaty pork hocks  
PREVIOUSLY FROZEN  
**49¢** lb.  
reg. price \$ 1.00



FRESH PORK  
country style ribs  
**108** lb.  
reg. price \$ 1.20



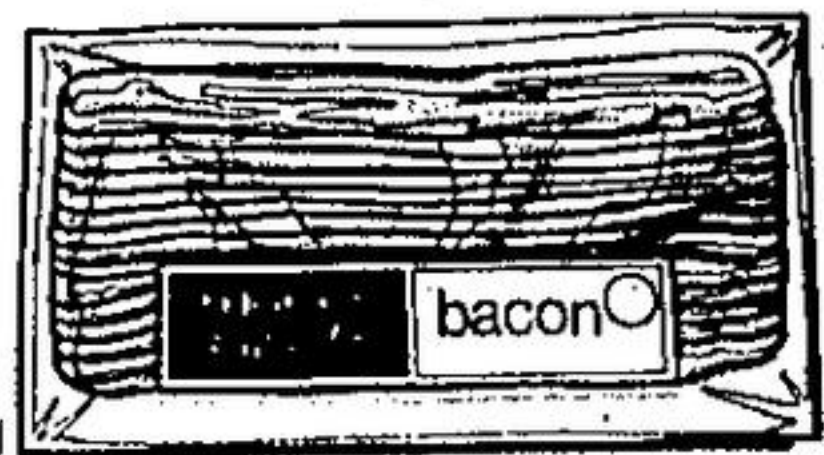
FRESH  
loin pork roasts  
TENDERLOIN END 3 1/2 LB. AVER.  
**105** lb.  
reg. price \$ 1.20



fresh boneless  
butt pork roasts  
**99¢** lb.  
reg. price \$ 1.10



LOBLAWS PURE  
pork sausage  
**89¢** FAMILY PAK lb.  
reg. price \$ 1.00



SWIFT'S PREMIUM or LAZY MAPLE  
sliced side bacon  
**128** 1 LB. PKG.  
reg. price \$ 1.40

HIGHLINER BRAND COOKED  
cod-in-batter **99¢** 1 LB. PKG.

HIGHLINER BRAND  
haddock fillets **138** 1 LB. PKG.

HIGHLINER BRAND  
Boston bluefish fillets **94¢** INDIVIDUAL WRAP 14 OZ. PKG.

OCEAN MAID BRAND  
sole fillets **174** 20 OZ. PKG.

FRESH "COUNTRY CUT"  
fryer parts **62¢** LB. (3 HINDQUARTERS WITH BACK) (3 FRONTQUARTERS WITH BACK) (3 WINGS, 2 GIBLETS)

FRESHLY GROUND (FAT CONTENT 20% OR LESS)  
ground beef **86¢** LB. (FORMERLY MINCED CHUCK) 2 LB. PKG. or OVER

CANADA GRADE A BEEF  
chuck steaks **108** LB. BLADE CUT



**FREE!**  
NHL ACTION  
PLAYER STAMPS

With every visit you make to Loblaws you can pick up a packet of 8 Action Players Stamps.

ALSO VALUABLE DISCOUNT COUPONS ON WELL KNOWN PRODUCTS

NHL ACTION  
PLAYERS  
STAMP ALBUM

The Stamp Sever Album is a full colour book that's just bursting with all sorts of interesting things. **249** each

BETTY CROCKER, ALL VARIETIES  
Snackin' Cake Mix **88¢** 15 OZ. PKG.

CLUB HOUSE, BROWN, ONION, MUSHROOM, or CHICKEN  
Gravy Mixes **100** 4 3/4 OZ. ENVELOPES

LANCIA, ALL VARIETIES  
Spaghetti and Macaroni **69¢** 2 LB. CELLO BAG

GATTUSO  
Tomato Sauce **89¢** 5 8 FL. OZ. TIN

# Loblaws

More than the price is right.

**OUR NEW GROUND MEAT ANALYZER**  
will make sure you're getting your money's worth.

The Loblaws Ground Meat Analyzer is now in all Loblaws Meat Departments. What it does is simply provide you with an accurate reading of the fat content in our ground meat. Each time a fresh amount of hamburger or ground beef is made, a check is made to determine the proper content of fat. Loblaws ground beef comes under three classifications. Hamburger, with a fat content of 27% or less. Ground beef, with a fat content of 20% or less. And Lean Ground Beef, with a fat content of 15% or less. Loblaws labels every package of ground beef with the percentage of fat content.