

# THE HERALD

Home Newspaper Of Halton Hills

Second Class Mail Registered Number—0913 Return Postage Guaranteed \$7.50 per year, Single Copy Price Fifteen Cents

THE HERALD, WEDNESDAY, FEBRUARY 13, 1974

## Magic World Of Disney Is Displayed By Skaters

Nineteenth annual carnival of Georgetown Figure Skating Club was a show-stopper. The club's escapades on ice were held Saturday and Sunday at the arena, and all three performances drew large crowds. Sunday's show had standing room only.

Theme of this year's carnival was the wonderful world of Disney, as the club commemorated 50 years of Disney entertainment. Mickey Mouse was there, and so was Minnie. Goofy cavorted with Clarabelle, and Donald and Daisy Duck were on skates.

Peter Pan tangled with Captain Hook and Davy Crockett was accompanied by frontiersmen and a bevy of beautiful saloon girls. Snow White met Prince Charming and Mary Poppins was ac-

companied by penguins, chimney sweeps and toys.

Staging was a big part of the production. During the presentation of When You Wish Upon A Star, when a host of Disney characters were introduced, from Lady and the Tramp to the Seven Dwarfs, Tinkerbell, played by Heather Corbett, was lowered to the ice surface from an aerial trapeze constructed for the show. She made another descent in the second half of the show for the Peter Pan number.

A big Mickey Mouse clock was painted at centre ice, and Disney and 50 were inscribed on the ice near the entrance.

Skating highlights were provided by Angela Watson of the Upper Canada Skating Club, Kevin Robertson from the Granite Club and Patricia

Fletcher and Kris Barber, Miss Fletcher skates out of the Upper Canada Club, as does Kris Barber, but he also skates with the Georgetown club and lives in Glen Williams.

**DANCE PAIR**  
The young pair, skating as a dance pair, placed fifth in 1973 at the Stamford Summer Competition; second, 1973, in novice dance, Central Ontario Competition, and sixth, 1973, novice dance, eastern Canada.

Miss Watson, this year, placed fourth in Junior Ladies, eastern Canada, and in 1973

was Niagara open Junior Ladies Champion and Central Ontario runner-up, Junior Ladies Champion. She was Central Ontario Novice Ladies Champion, 1970-72.

Mr. Robertson is 1974 Canadian Junior Men's Champion, 1973 eastern Canada Junior Men's Champion; 1972, second, Canadian Junior Men, and 1970-71, Canadian Novice Men's Champion.

Portraying the main roles in the ice show were Sandra Fendley as Goofy, Karen Hauser as Mickey Mouse, Diane Charette as Minnie

Mouse, Sharon Watson as Donald Duck, Michelle Dittfach as Daisy Duck, Heather Moores as Clarabelle, Laura Verxa as Lady, Hayley Quinn as Tramp, Kris Barber as Davy Crockett, Leslie Tonna as Snow White and David Watson as Peter Pan.

The seven dwarfs were Lise Smith, Janet Shepherd, Gail Shanks, Cheryl Kelly, Susan Kelly, Karen Blackstock and Tina Lombro.

Rene Pilote was Mary Poppins and Mark Snow was Prince Charming. Stepmother was Eileen Hancock. A bear was portrayed by Ron Snow, and a horse consisted of two parts, Bob Hall and Ed Elsliger. Jo Anne Shannon was an alligator and Eddy Howard was Captain Hook. Linda Corbett was Wendy and Madeline Rogers was Tiger Lily.

**SALOON GIRLS**  
Saloon girls were Susan Alexander, Yvette Christie, Janet Shepherd, Charlene Grummett, Kimberley Grummett, Cheryl Hauser, Kelly Mirzanic, Sally Murphy, Laura Simpson and Janice Snow.

Frontier men were David Prete, Kevin Stewart, Malcolm McLeod, John Duff and Tommy Cox. Horses were Robin Burroughs, Tracy Charles, Leigh Cooper, Maryann Donaldson Larissa Hretchra

Carolyn King, Kim Wooland and Tracey Curtis.

Siamese cats were played by Sherry Smeaton, Lyn Fisher, Cydney Sherry and Tracy Moores. Kelly Barber was a hound, Carol Lovell was a Dalmation and Susan Eves was an Irish setter. Hugo Dittfach was Michael, in Peter Pan, and Jason Mogg was Mike in Mary Poppins. Bert was Cathy Elsliger and Jane was Kirsten Mogg. Penguins were Susan Abbott, Susan Cameron, Shelly Ann Foskett, Jackie Hewitt, Tammy Mackey, Leah McArdle, Deborah Newman, Kimberley Stewart, Cheryl Thompson and Heather Rogers.

Lost boys were Jim Massena, Dean Huston, Peter Allen, Todd Collins, Andrew Cook, Danny Curtis, Craig Grant, Kevin Jepsen, Michael Martin, Garry Morrow and Trevor Peck.

Members of the club's professional staff are Sharon Dwyer of Acton, Janet Fell of Oakville, Rick Dowling of Oakville, Stan Dulong of St. Catharines and Mary Lynn Williams of Georgetown.

Carnival chairman was Ron Snow. In charge of costumes were Jane Hodgson, Sue Evans and Jackie Foskett. Denny Shepherd was in charge of props and backdrop while Doug Hauser looked after erection of scenery. Design of scenery was by Jim Montgomery and Uta Pettingill. Master of ceremonies was Trevor Moores. Bob Hall was in charge of ice painting, while Charles Tonna directed lighting.



SHARON WATSON, MICHELLE DITTFACH,



GUEST SKATER ANGELA WATSON



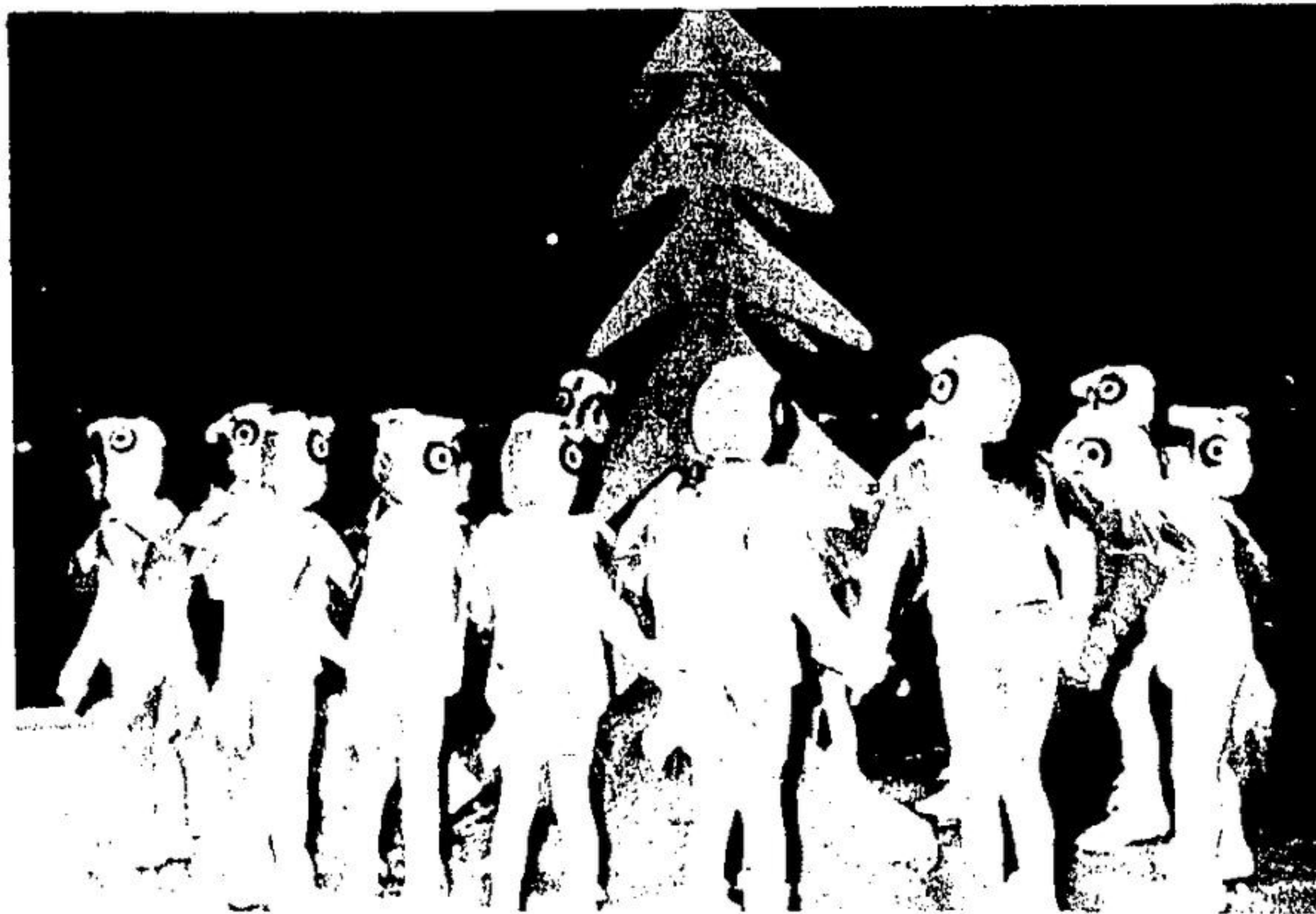
PRINCE CHARMING AWAKENS SNOW WHITE



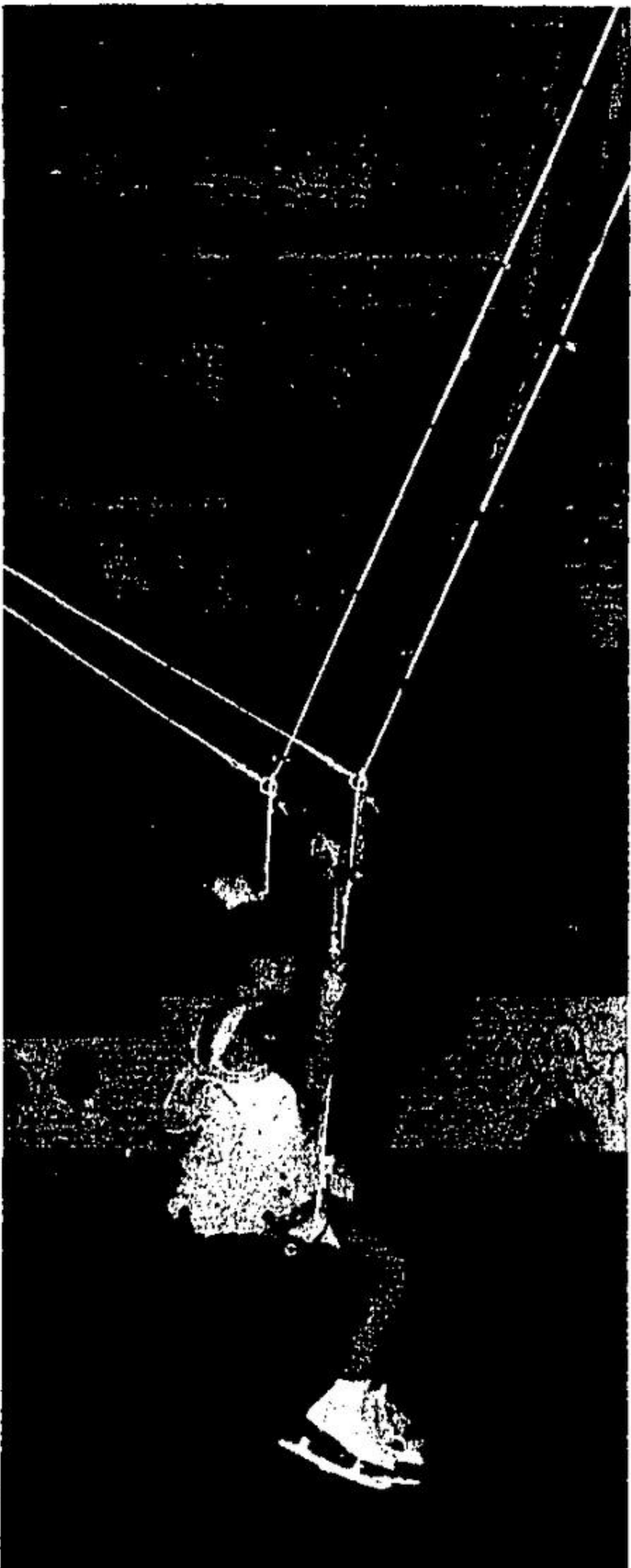
WENDY, PETER PAN AND COMPANY



PRE-SCHOOL SKATERS ARE ASSORTED DOGS OF LADY AND THE TRAMP



BIRDS OF THE FOREST WAIT FOR SNOW WHITE



HEATHER CORBETT AS TINKERBELL



PATRICIA FLETCHER, KRIS BARBER, NOVICE PAIRS



SIAMESE CATS CAST EYES ON BIRD IN A GILDED CAGE

(Herald Photos)