

**HELP WANTED**

**CAFETERIA HELP WANTED**  
ACTON HIGH SCHOOL.  
Own transportation essential.  
Apply in writing only to  
**BEAVER FOOD SERVICE**  
505 NORTH SERVICE ROAD EAST  
OAKVILLE, ONT.

**LICENSED OIL BURNER MECHANIC**  
Georgetown Area  
Earnings unlimited, depending on ability. Be your own boss.  
Call  
**BOEHMERS**  
1-519-745-1151  
Extension 65 or 17

**COUNTER CLERK FULL TIME**  
No experience necessary  
Apply  
**CADET CLEANERS**  
DELREX PLAZA  
Friday, October 26 from 10 a.m. to 11 a.m.

**PACKERS AND SORTERS**  
**REQUIRED IMMEDIATELY**  
Excellent wages and bonus.  
Company paid benefits  
Apply to  
**PAT BARNETT**  
**MILTON BRICK CO.**  
878-4441

**HELP AVAILABLE**  
EXPERIENCED farm help available for relief work—877-9852.  
DAY CARE available in my home pre school or school age, fenced yard, hot lunches, for information call—877-5209

**PERSONAL**  
MARCELLE Hypo Allergenic Cosmetics, specially blended for sensitive skin. Kenner's Pharmacy.

**HELP WANTED**

**HELP REQUIRED FOR FACTORY LABOR**  
Commencing November 5th to approximately April 15th.  
apply  
**APPLE PRODUCTS**  
315 Main Street  
GLEN WILLIAMS

**WOODWORKERS**  
OPENINGS AVAILABLE IN  
**MILL FINISHING and ASSEMBLY**  
departments of HARDWOOD PLANT located on QEW Oakville  
Excellent working conditions and fringe benefits  
Long term security and advancement potential for good workers.  
apply Mrs. Neil  
**DOMINION MANUFACTURERS LTD.**  
416-844-2300

**MACHINISTS**  
VARIAN ASSOCIATES  
A manufacturer of sophisticated electronics equipment requires a number of experienced machinists to work on the afternoon shift in our Georgetown operation.

**GENERAL MACHINIST**  
We need a machinist with at least five to seven years experience in machining small parts to operate a Hardinge Toolroom lathe.

**CHUCKER LATHE OPERATOR**  
We need a machinist with two to three years experience to operate a Chuckler Lathe.

**MACHINE LATHE OPERATOR**  
We require a person with two to three years experience to operate our Machine Lathe and Drill Press.

We provide an afternoon shift bonus of ten percent of base pay for hours worked on the afternoon shift.  
We also offer excellent wage rates and employee benefits.

To apply contact  
**PERSONNEL MANAGER**  
**VARIAN ASSOCIATES OF CANADA LTD.**  
45 River Drive, Georgetown Ontario  
457-4130

**HELP WANTED**

**SECRETARY**  
REQUIRED FOR TYPING Dicta, and able to work without supervision apply  
**MAPLE LODGE FARMS LTD.**  
6TH LINE WEST OF BRAMPTON  
(Winston Churchill Blvd.) 1/2 mile north of Steeles Ave.

**OPPORTUNITY**  
Distributors needed for Georgetown and vicinity.  
We are a rapidly growing company specializing in cleaning equipment for home and industrial use.  
If you have ambition to build your own business and enjoy meeting people an excellent future can be yours.  
Earning potential unlimited  
Very small investment needed  
For interview appointment please call Mr. H.G. Ruschke at  
**KIRBY INDUSTRIES**  
278-6197

**PLANT LABORERS**  
New plant in Bramalea  
Requires  
Experienced warehouse help to work a regular 8 hour day, five days a week. Minimum education Grade 10.  
Good company benefits  
Apply in person to  
**80 WEST DRIVE, BRAMALEA**  
Between 9 a.m. and noon, Monday to Friday or  
Telephone 457-5650.

**PRODUCTION LINE WORKERS**  
REQUIRED  
IN OUR SELECT AND PACK DEPARTMENT  
Applicants must have good vision and should be prepared to work shifts on a seven day rotating basis.  
Company offers shift premiums and excellent benefits.  
Successful applicants will be trained.  
Apply in person  
**DOMINION GLASS COMPANY LTD.**  
100 WEST DRIVE, BRAMALEA

**ZELLERS**  
REQUIRE FULL TIME COMMISSION  
**SALES PERSON**  
For Furniture Department  
Full range of company benefits  
apply  
**MRS. CAROL PACKER**  
877-5131

**FITTERS**  
For fabrication shop, plate and pipe \$4.22 per hour plus benefits.  
**INDUSTRIAL STEEL FAB**  
Ontario St., Box 113, Georgetown Ontario  
877-5127

**Automotive Stamping Plant**  
REQUIRES  
**Experienced Set-Up Man**  
To setup heavy tonnage presses, air and hydraulic seeders, projection and spot welders.  
Must have own tools.  
Blueprint reading an asset.  
Starting \$4.34 per hour plus generous company paid benefits.  
apply in person  
**LUSTRO STEEL PRODUCTS**  
40 HOLTBY AVE. BRAMPTON

**CONTROL DATA CANADA LTD**  
EARN EXTRA MONEY FOR CHRISTMAS AS **ASSEMBLERS** AT **CONTROL DATA**  
Short term positions (for approximately three months) are immediately available in the following areas:  
—PRINTED CIRCUIT BOARD ASSEMBLY  
—HARNES OR CHASSIS ASSEMBLY  
Applicants will require their own transportation. Please contact  
**MRS. J. GARRETT — 270-1500, ext. 214**  
270-1500, ext. 214  
**CONTROL DATA CANADA LIMITED**  
1855 Minnesota Court, Streetsville, Mississauga

**WELDING SHOP SUPERVISOR**  
Experience with manual, automatic, MIG and Tig welding  
**INDUSTRIAL STEEL FAB**  
Ontario Street  
Box 113, Georgetown  
877-5127

**INVOICE TYPIST**  
With telephone and reception duties required for medium sized manufacturing company.  
Must have own transportation.  
Dixie and 401 area  
Call 677-1850

**LORLEA STEELS LTD.**  
225 ORENDA ROAD, BRAMALEA  
Challenging career, position available as plant foreman with a growing Bramalea firm. Machine fitting and sheet metal experience required. Responsibilities include roll forming mill setup, quality control and supervision.  
**CONTACT MR. RON McLEAN**  
457-5110

**LABELMASTERS LIMITED**  
REQUIRE  
**HAND TYPESETTER**  
for rubber plant department in  
Georgetown Printing Plant. Good wages and benefits offered, 4 day, 40 hour work week.  
**MR. PARKINSON**  
877-7471

**PUNCH PRESS OPERATORS**  
Starting rate \$3.89 per hour, plus generous company paid benefits. Will train suitable candidates.  
Apply in person to  
**LUSTRO STEEL PRODUCTS**  
40 HOLTBY AVE. BRAMPTON ONTARIO

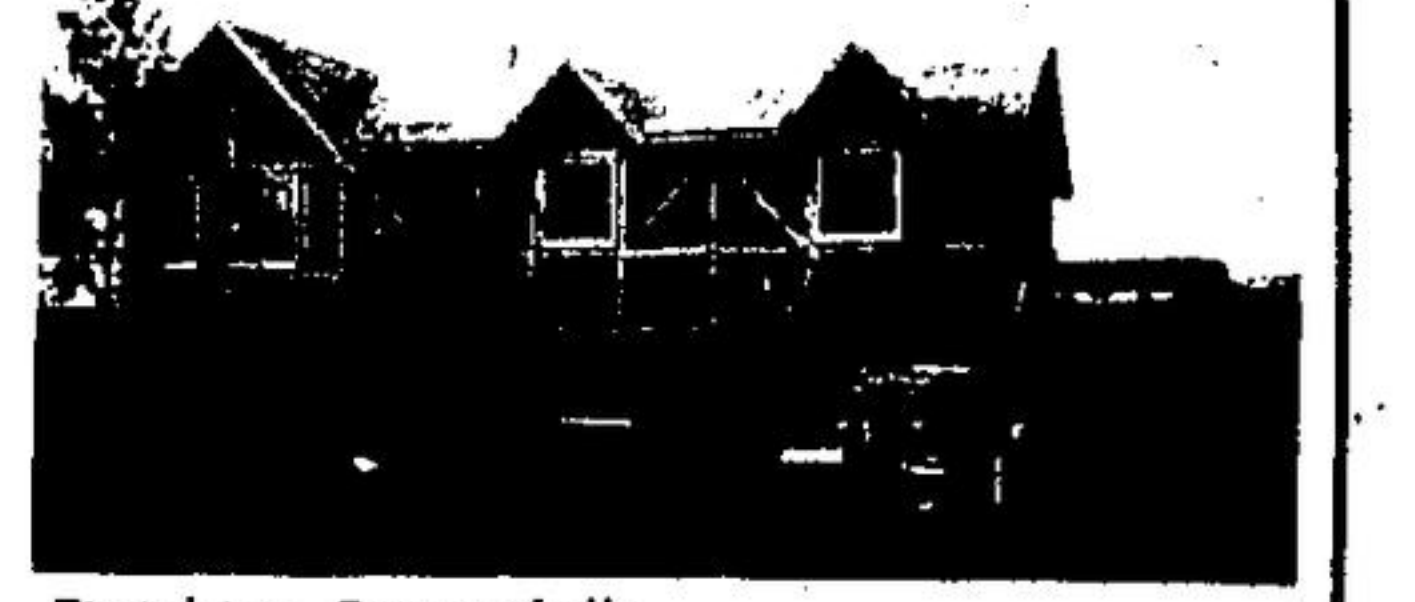
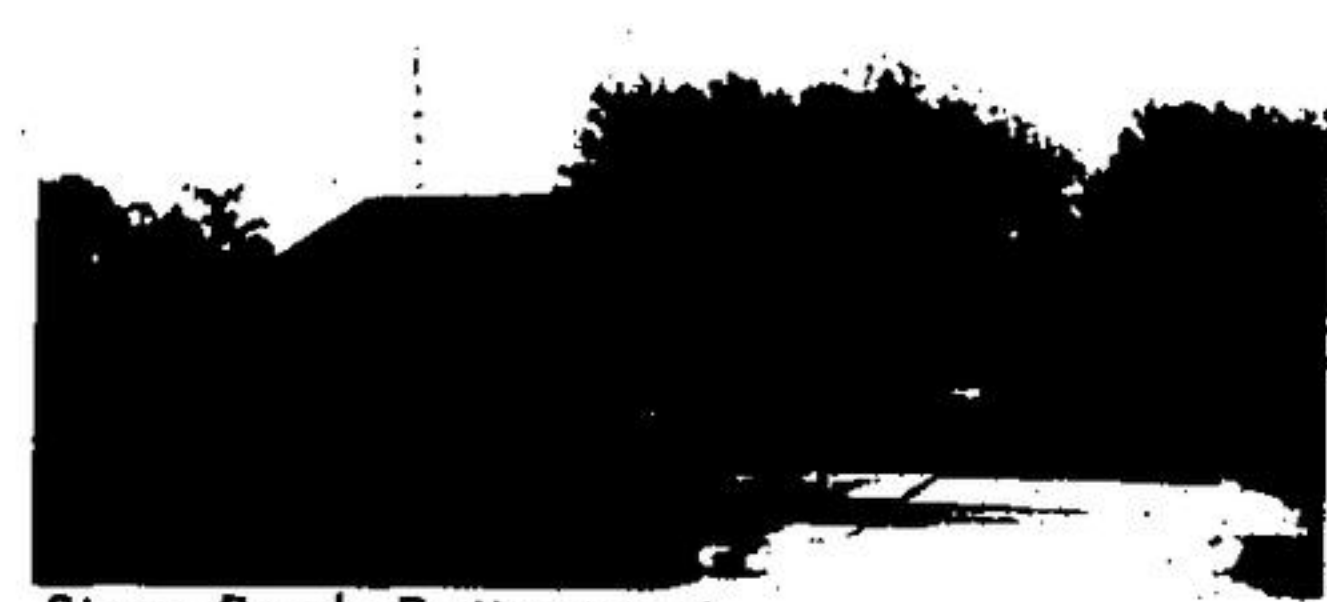
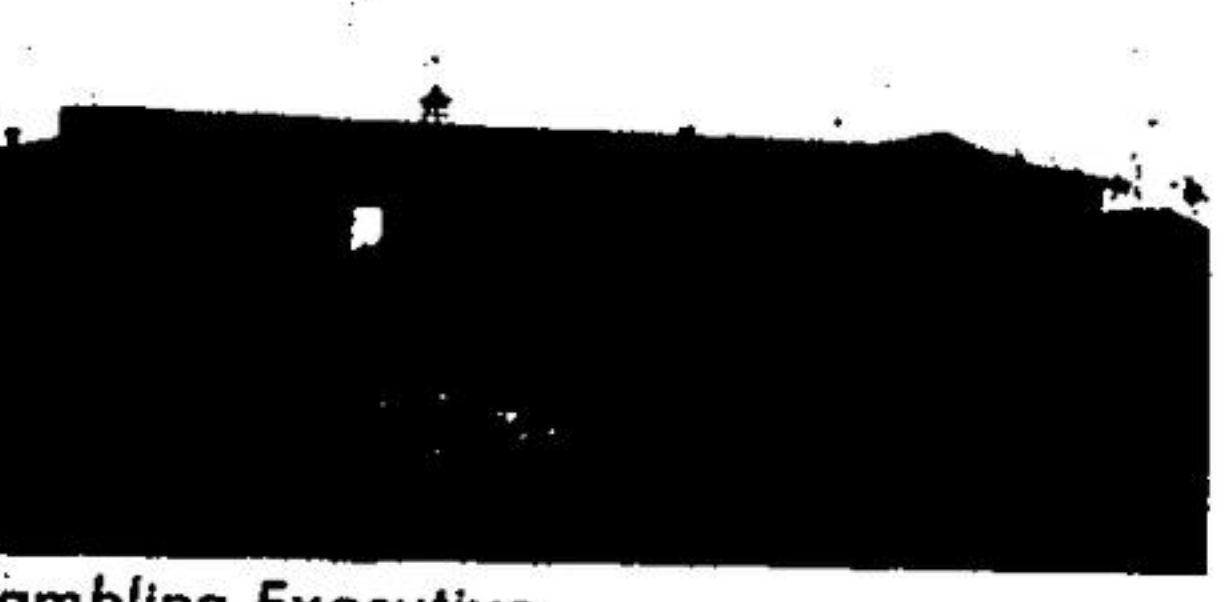
**GENERAL PLANT HELP**  
Required for modern manufacturing company in Bramalea.  
Excellent working conditions and benefits.  
Please apply  
**THOMAS J. LIPTON LTD.**  
307 Orenda Road Bramalea  
Telephone 451-8250

**Interested in Results? Are You Buying? Selling? Be Sure You're Ahead!**

**List with Edward Nelson REAL ESTATE**

**ACTION MEANS THE SOLD SIGN — THE SIGN OF SERVICE**

After 9 p.m. Call  
Don Jarvie 877-1707  
Bob Turkington 877-4270  
Fred Harrison 877-3922  
For Fast Action — Put Your Home in This Feature Spotlight



Rambling Executive . . . . .

Comfortable Price Too . . . . .

Story Book Retirement . . . . .

Finishing Beautifully . . . . .

**BE HAPPY — PLAY SAFE**  
Please note the high percentage of our listings that **SELL**—We are not sorry "it's sold" we are happy for both the **PURCHASER** and the **VENDOR**. They may now proceed with their future plans.  
The real reason for this activity is the **CONFIDENCE** that people have in the ability of our professional staff. To be able to properly counsel a client in the crucial area of location and values, be an expert on the continually changing scene of the entire community and real estate market trends. This requires constant study, inspection and awareness. **LOCATION** is a dominant feature of any property. **COMPETENCE** is a dominant **QUALIFICATION** of our Agents.  
**LET US EVALUATE YOUR HOME NOW. IT MAY CHANGE YOUR PLANS AND YOUR FUTURE FOR THE BETTER.**

**YOU ARE HOME FREE**—Semi-duplex, good district in town. Entire inside is remarkably finished in modern panel, broadloom, new furnaces and separate utilities. You will actually buy two homes at about \$22,000 each. Tremendous investment. Only **\$44,900.**

**SHOOT FOR YOUR FUTURE**—Big values when you see this retail outlet and two apartments, fronting on the street. Ideal for driving business or basic income investment. Let the owner to prove potential. Priced right. Asking **\$42,900.**

**BIG CHUNK OF CANADA**—75 acres. Here is a buy in a fast development area near Orangeville, frontage on two roads, one paved thoroughway. Estate properties going strong. Look into this about one third down. Good terms, asking only **\$57,500.**

**MAKE IT YOUR LAND**—Big 150 foot frontage, good variety of trees and fabulous access to big country lots. 2.5 acres around this natural recreation area. Just the place for your cattle. Asking **\$27,900.**

**MARES EAT OATS**  
16 acres village fringe, near 200 feet frontage, regional may allow development here in the near future. Road and highway, then back to some bush and small clear treed 16 acres! It's yours for only **\$37,900.**

**LAND OF GLORY**—All year round, nice bush building lot, almost an acre, culvert in near highway 10. Good commuting distance. Ready for you. Try **\$21,000.**

**READY NOVEMBER 15**—English Country Tudor, a most popular design and yet not duplicated. Blends with any location and suitable for the most discriminating buyer. Three bedrooms, broadloom and all the rest, one half acre bordering the village in tune with prestige homes. Only **\$44,900.**

**SOMETHING SPECIAL**—Solid brick and clean, hardwood. Not often you find this extra security of a low-law suit, self contained, the bedrooms and ceramic tiled shower, big and nice neighborhood spells real value. And only **\$45,900.**

**BUILT FOR COMFORT**—Smartly finished interior, completely renovated, this two bedroom bungalow sports a two car garage, on an extra big lot within walking distance of shopping etc. It has all you ever need. Look into it now. Asking **\$33,500.**

**BRIGHTER THAN NEW**—This classy four bedroom formal dining room, double slider walkout, broadloom, V.O. private, patio, one car garage, and many other fine features. Wide open spaces in one of the nicest areas of town. Only **\$44,900.**

**SOUTH CENTRAL ONTARIO**—Make time for fun and recreation. Georgetown is a great location for the traveller servicing the Golden Horseshoe, Toronto, Hamilton, Niagara peninsula and about an hour from London, Kitchener or Barrie. We have a nice house for you, priced right. Put the show on the road. Call us right away.

**LIKE STORYBOOK PARK**—This striking bungalow is on an extra large lot, landscaped by real proud people. The unique garden, house and patio and unusual corrugated carport, roof and lattice work, inside panelling and glistening wood floors add much more to this spotless home. Be sure to see it now. Special buy at only **\$35,900.**

**WHAT ELSE TO SAY?**—Glimmering, glistening bright, two storey Cambridge model, all four bedrooms are big. Open layout with private dressing area, his and her bathrooms, also washroom ensuite and another besides the master bath, three for big family living. Overflowing with values. Only **\$49,900.**

700 feet of rangy land, trees, bush and rolling ideal estate home site. Only three miles from paved artery highway. Good access to Toronto and Hamilton. Ten minutes from GO train. Rare acreage. Good terms. Only **\$43,500.**

**IN THE FIRST PLACE**  
Here is a long rambling ranch style bungalow, Roman brick and stone, wide breezeway between house and oversized double garage leading to sharp patio. Nearly an acre of lawn and a 20' x 40' in ground heated pool, and all accessories. Inside four bedrooms, broadloom and drop floor. Hearth to ceiling stone fireplace. Downstairs, all styrofoam insulated sub floor, bright smart panelling and ceiling throughout. Big game room and mantel fireplace, besides a family room plus a huge entertaining area with a 12' mahogany bar. You must see the rest. No fooling **\$74,900.**

**PROPERTIES WANTED**  
Country—Brick bungalow price range—\$50-\$60,000  
Vacant Land near Georgetown — \$25,000 cash  
Country Building Lots— \$15-\$18,000  
Old Brick Farmhouse—some acreage \$45,000.

**INDUSTRIAL • COMMERCIAL • RESIDENTIAL**  
**edward nelson**  
Member of Toronto Real Estate Board  
**REAL ESTATE LIMITED REALTOR**  
**ACTION 877-8320**  
**NUMBERS 457-8320**  
106 Guelph St., Georgetown