

Parks and Crown Lands Provide Miles of Trails

As in the summer season provincial park visitors are expected to abide by rules laid down in the interests of safety and conservation. The operation of snowmobiles is prohibited in some parks but is permitted in specified areas in many others. The restrictions are necessary to protect wildlife and waterfowl habitats, developed nature trails, extensive tree and shrub plantings and designated primitive, natural and historic zones within parks. Snowmobiling may be temporarily restricted in any park when the snow depth is less than six inches.

Here is a summary of where you may snowmobile in parks in 1971-72:

- Snowmobiles Prohibited**
1. Long Point Provincial Park.
 2. Bass Lake.
 3. Mara.
 4. Springwater.
 5. McRae Point.
 6. North Beach.
 7. Sandbanks.
 8. Killbear.
 9. Lake Superior - except to travel on the Mijin Lake Road between Hwy. 17 and Mijin, Maquon, Almonte, Wabigoon and Mirmake Lakes.
 10. Quetico - except to travel on lakes and waterways forming international boundary.
 11. Algonquin.
 12. Montreal River Nature Reserve Park - Twp. 29, Range XIV.
 13. Gibson River Nature Reserve Park - Baxter Twp.
 14. Matawatschan Nature Reserve Park - Matawatschan Twp.
 15. Trillium Woods Nature Reserve Park - West Oxford Twp.
 16. Waubashene Beaches Nature Reserve Park - Tay Twp.
- Snowmobiles Restricted - to travel only on designated and marked trails - minimum of 6" snow depth.**
1. Pinery.
 2. Roundou.
 3. Earl Rowe.
 4. Sibbald.
 5. Darlington.
 6. Emily.
 7. Balsam Lake.
 8. Presqu'ile.
 9. Outlet Beach.
 10. Bon Echo.
 11. Arrowhead.
 12. Mark S. Burnham.
 13. Killarney.
 14. Kakebeka.
 15. Sibley.

Snowmobiles Permitted - to travel only on existing park road systems, in all parks not listed above.

CROWN LANDS
A number of cross-country trails have been established on Crown lands by the department of lands and forests to accommodate snowmobilers who prefer this kind of prepared and marked trail development.

These trails, located in areas of relatively heavy snow cover, are established to supplement the trails developed in provincial parks and the many other trails marked by snowmobile clubs, winter resorts and private landowners.

There is no charge for the use of these trails which include the provision of parking areas, toilets and garbage containers. Many of the trails are marked with reflective signs to permit safe night travel. Please sign the trail registers at the parking areas. A supply of trail guide maps is placed at these locations.

Horseshoe Lake Trail
This trail commences from a parking lot located 14 miles north of Coldwater on the Severn Falls Road (Simcoe County Road 17). The trail is a circular 18 mile route and can be travelled in 3 to 4 hours at normal cruising speed. It provides a wide variety of terrain including lakes, marshes, high rocky cuts and timber lands. Two stop-over points have been developed.

Parmigan Trail
Commencing from the same starting point as the Horseshoe Lake Trail, this new trail east of County Road 17 will cover a total of 20 miles. It combines a long and short loop system with four stop-over points and touches Matchedash, Eastern and Dumbell Lakes.

Wilson Lake Trail
The trail commences at the Shawanaga River bridge on Highway 69 approximately 19 miles north of Parry Sound. The parking lot is approximately one mile east of Highway 69 on the Wilson Lake Road. The return trip, entirely through forested land, is 25 miles in all with three stop-over sites; including one in the Village of Ardbeg. The trail requires no travel on lakes, and creeks have been bridged. A new 10 mile trail now links the Wilson Lake trail to the Village of Pointe au Baril.

For further information contact the District Forester, department of lands and forests, Parry Sound, (705) 746-2141.

Sherbourne Trail
Travel along 25 miles of old forest roads through the rugged country of the Haliburton Highlands. This circle route begins at a parking lot on Highway 35 at Wren Lake, five miles south of Dorset.

Further information from the department of lands and forests, Parry Sound, (705) 746-2141.

Oxtongue Lake to Dorset Trail
Here is an interesting 10 mile trail suitable for night travel linking the communities of Oxtongue Lake and Dorset. Parking and services are available at both ends of the trail. Further information from the department of lands and forests, Parry Sound, (705) 746-2141.

Livingston Trail
Begin at Dorset and travel eastward along this 25 mile circle route. The trail touches a number of lakes and passes through mature hardwood forest. Here is an opportunity to view large virgin White Pine which were bypassed by the loggers half a century ago.

Further information from the department of lands and forests, Parry Sound (705) 746-2141.

Seguin Trail
This abandoned railway line has been converted to an excellent 45 mile cross-country trail. The parking areas are located seven miles south of Parry Sound on Highway 69 and three miles west of Emsdale on Highway 11. The trail runs roughly parallel to Highway 69 and touches several small communities along the way. There are two unique bridge crossings over the Seguin River. Further information from the department of lands and forests, Parry Sound, (705) 746-2141.

Galway Trail
This 26 mile marked trail is located in Galway Township approximately 40 miles north of Peterborough. The parking area is adjacent to Highway 507 about six miles north of its intersection with Highway 36. The trail passes a number of small lakes, no travel on ice is required to complete the circle route. Further information and map available from the department of lands and forests at Lindsay, (705) 324-6121.

Silent Lake Trail
This 15 mile trail circles around Silent Lake through an interesting range of topography and forest cover. The parking area is located on Highway 28 approximately 13 miles north of Apsley (one mile north of Dyno road cutoff). Further information from the department of lands and forests, Lindsay, (705) 324-6121.

Cavendish - Anstruther Trail
This 40 mile circle route lies between Highway 507 and Highway 28. The western area is located 12 miles north of Flynn's Corners on Highway 507. The eastern terminus is located one mile off Highway 28 on the Eels Lake Road (approximately nine miles north of Apsley). Further information and maps available from the department of lands and forests at Lindsay, (705) 324-6121.

Bowling Banter

MARRIED COUPLES

| | |
|--------------------|----|
| Standing Originals | 22 |
| Rebels | 18 |
| Non Stars | 17 |
| Terrifics | 16 |
| Al's Dingalings | 14 |
| Hank's Tigers | 14 |
| Unpredictables | 14 |
| Mac's Quacks | 13 |
| Late Ones | 13 |
| Scotties | 12 |
| Midnites | 9 |
| Six Pack | 6 |

Al Cox was the bowler of the night with a terrific triple of 809. Next was Gord Pantling with two games of 300. One was 305 and the other exactly 300.

Two other 300 games were rolled, 318 by Helen Mossop and Harry Brandford had 315. High triples for the night were: Bill Barclay 777; Don Wilkes 757; Gord Pantling 756; Charlene MacCormack 748; Harry Brandford 722; Helen Mossop and Cliff Norton each with 705.

Ten Top Averages:

| | |
|---------------|-----|
| H. Brandford | 228 |
| D. Wilkes | 223 |
| E. Fendley | 218 |
| G. Herrington | 217 |
| C. Archibald | 214 |
| C. MacCormack | 218 |
| J. Archibald | 206 |
| H. Mossop | 201 |
| S. Chaplin | 198 |
| S. Graham | 196 |

MEN'S MAJOR

| | |
|-----------------------|----|
| Standing | 12 |
| Ryder's T.V. | 11 |
| W. F. Hunter Realtor | 11 |
| Dairy Queen | 11 |
| Sykes Super Donuts | 10 |
| Rexway B. P. | 10 |
| Glen Taxi | 9 |
| Exchange House | 7 |
| Tom's Car Sales | 7 |
| Saunders Easo | 6 |
| Flowerdown Motors | 6 |
| Golden's Fish & Chips | 6 |
| Wilkes Lucky Dollar | 4 |

Top Ten Averages:

| | |
|---------------|-----|
| G. Passmore | 249 |
| G. Barber | 238 |
| G. Nurus | 237 |
| G. Herrington | 235 |
| B. McGowan | 236 |
| P. Southon | 233 |
| S. Swann | 232 |
| A. Bailey | 231 |
| B. Harris | 231 |
| B. Craig | 230 |
| B. Lowin | 230 |
| D. Wilkes | 230 |
| G. Coughlan | 230 |

The first 400 game to be bowled at Georgetown Bowl for this season was rolled by Tom Goss on Monday, December 13th. His single game was 401.

The high triple was Don Wilkes with 843 and a 308 single. Ron McGowan with 789; Gord Coughlan with 748; Harry Brandford 741; Dave MacFarlane 739; Phil Southon 732; George Archibald 739; Ray Harlow 737; George Barber 729 and Bob Harris 728.

Late Result

Georgetown Raiders extended their win string Tuesday night in Fort Erie, beat the home team 5-2. Steve Blund scored a pair, and Terry Cook, Neil Cotton and Al Silit one apiece.



Thousands of acres, and miles of trails await snowmobilers.

Kendall Area.
Located in the scenic Great Pine Ridge country northeast of Oshawa, this 700 acre area provides an interesting and challenging variety of open and wooded areas in hilly country. As no specific trails are marked, visitors are asked to respect the newly reforested areas and surrounding private lands. Travel north from Newcastle for seven miles on Highway 35. Turn east at the Village of Kirby on County Road nine and travel four miles passing the Oshawa Ski Club, to the parking area. Further information and maps available from the department of lands and forests at Lindsay, (705) 324-6121.

Bon Echo Trail
Begin at Bon Echo Provincial Park on Highway 41 and travel westward on this 25 mile trail. The trail connects with an extensive system of trails developed by the Highland of Hastings Tourists Council. Further information and maps are available from the department of lands and forests at Tweed (613) 478-2330.

Limerick Forest
This extensive area of reforestation managed by the department of lands and forests provides the setting for 55 miles of marked trails. Follow County Road 18 north for seven miles to Roebuck. Continue north for six miles on a Township road to the forest headquarters. Further information and maps available from the department of lands and forests at Kemptonville (613) 258-3411.

Tri-County Scoreboard
Faithful Fans Warm Up And So Do Town Teams

MEET THE GEORGETOWN RAIDERS

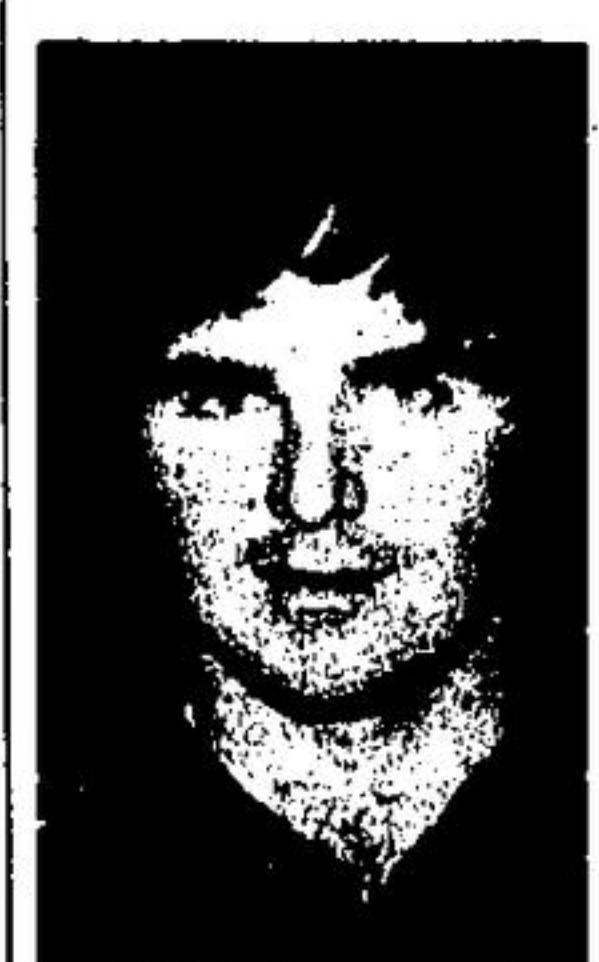
Special Note: Georgetown Minor Hockey Support Group want to thank all of our faithful fans for bearing with us during the inconvenience of no heating in the arena. This has now been remedied and once again, we have heat.



DOUG RICHARDSON
A second generation Georgetown intermediate, Doug is the son of former Papermakers forward Walt Richardson. He played Junior C here, Junior B with Brampton 7 Ups, senior with Bradford and both A and B intermediate here. Richardson is 31, 6' tall and weighs 200 lbs. He lives in town and is employed at Zenith Tool & Die.



BILL MACCORMACK
Georgetown Raider Hockey Club's president has lots of playing experience. He rose the minor ranks here to play for Georgetown Juniors, then played both junior and senior hockey with Kingston. He attended Queens University and the University of Toronto, graduating in pharmacy. He operates MacCormack's Drugs on Main Street.



AL RACHON
This young defenseman is a recent arrival who has supplied the blue line help that the club needed. He is a Hornby resident and counts Parry Sound Junior C's and Junior A Sudbury Wolves in his list of past teams. A good strong checker with a terrific shot, Rachon is just 20 years old, stands 5'11" and weighs 185 lbs. He wears No. 3.



DUFF MCCARTHY
This 20 year old right winger has already earned the respect of his older mates with his skating and scoring ability. He is their most recent recruit and comes direct from the ranks of the Junior A Kitchener Rangers. Prior to that he was a Junior B Dixie Behver. He packs 175 lbs on his 5ft. 8 in. frame.

NORTH HALTON CURLING NEWS

Here are the Winners Of Ladies' Turkey Draw

by TRACEY BARRAGER & JUNE MAGNUSON
This year our wine and cheese party turned into a full evening of dancing and was very well attended. We met a lot of our golfing buddies there. The ladies did an excellent job, setting up a full table of snacks and delicious cheeses. The social committee presented Mr. Carter, who is retiring as manager, with a gift of all our appreciation for a job well done. We will miss him, as I am sure all of you will. He was always cooperative and dedicated to his duties. If you have any curling news pertaining to bonspiels in which you participated over the holidays, please let us know for future material for the column. Here are the winners of the ladies' turkey draw: Tuesday-1st, Faye Braithwaite, JoAnn Morton, Sandy McDevitt, Beth Fairbank; 2nd, Lorraine Pursel, Doris Zillo, Joan White, Tina Kitcher; 3rd, Maddie Howat, Bev Hayhurst, Bobbie Phillips, Jacky Foskett. Thursday-1st, Lorraine Pursel, Mabel Sanderson, Marilyn Barber, Tina Kitcher; 2nd, Bunny Moore, Dot Hamilton, Norma Alexander, Sandy Timeck; 3rd, Rhoda Constantine, June Magnuson, Carol Hayhurst, Elizabeth Biras.

Georgetown Industrial Hockey

| Standing | W | L | T | P |
|--------------|---|---|---|----|
| North Halton | 7 | 1 | 2 | 16 |
| Norval | 6 | 4 | 0 | 12 |
| Glen | 3 | 7 | 0 | 6 |
| Mac's | 2 | 6 | 2 | 6 |

For tender skin on baked potatoes brush the potato with melted butter or drippings before placing in the oven.



TOM HAINES' SPECIAL THIS WEEK

1949 RIVIERA
2 Door Hardtop, Dark Green, P.B.P.S. Radio, W.S.W. covers, P. Windows. License L88743
PRICE \$2,995.00
★
"You've tried the rest now phone the best."
★
SEE TOM HAINES AT Andrew Murray Motors Limited
45 Mountainview Road Georgetown, Ontario
Home: 877-3302
Business: 877-6944

1308 Guelph St.
CLOSED, Christmas Eve at 7 p.m.
RE-OPENING Tuesday, Dec. 28th at 8 a.m.

BEST WISHES

MAY YOU HAVE A VERY HAPPY HOLIDAY

Bill Garbutt
Plumbing & Heating Ltd.
14 Elgin St. 877-3438

GEORGETOWN HERALD, THURSDAY, DEC. 23, 1971 Page 6

MAYFIELD SWIMMING POOL
4th Line - 17th Sideroad, Chinguacousy Township.

WINTER SWIMMING CLASSES
COMMENCE JANUARY 6TH.
REGISTER NOW

Any evening or Saturday and Sunday (afternoons)

For further information call 843-1251

Greetings
AND SINCERE THANKS TO ALL OUR CUSTOMERS

WE CATER TO SMALL PARTIES
COUNTRY FRIED CHICKEN SALADS
PLUS... OUR REGULAR MENU
call 877-7121

DOG 'n SUDS *Diner Inn*

185 Guelph Street
Georgetown, ONTARIO

Fast Fine Food Service
To Your Car

Our thanks and good wishes ring out to our friends...

JOYOUS HOLIDAY GREETINGS

CREST HARDWARE
Owned By Richardson's

Sykes SUPER DONUTS

to all our friends, old and new!

Sykes SUPER DONUTS

1308 Guelph St.
CLOSED, Christmas Eve at 7 p.m.
RE-OPENING Tuesday, Dec. 28th at 8 a.m.

GOLDEN FISH & CHIPS
Betty & Ed Schipper & Staff
at 136A Guelph St.
Tina & Ron Dykxhoorn at 31 Main St. North