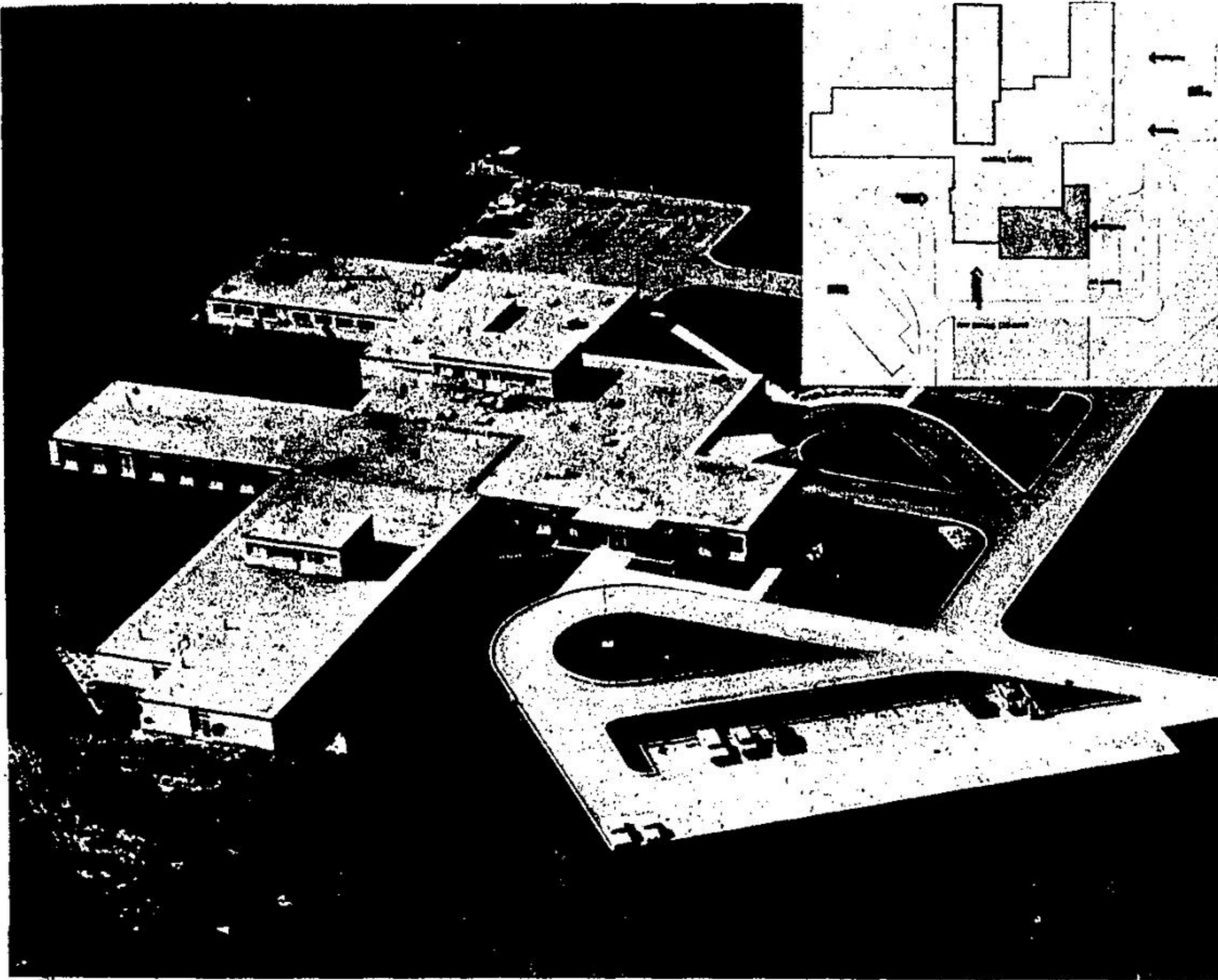


# Additions Would Change Shape of Hospital



Georgetown and District Memorial Hospital's structure has not changed since this aerial picture was taken shortly after it opened in 1960. The diagram in the top right corner shows the area to be added in the first stage of the expansion program (shaded) and where the second and third floors will go in stage two (bold rectangle). The lightly shaded area indicates a proposed parking lot to accommodate 30 more cars.

# Yes, Santa There Is A Virginia

The world is still full of little Virginias who believe in Santa Claus and what he stands for. The United Church Observer says in its current issue.

In a letter to Santa Claus headed "Yes, Santa, there is a Virginia," The Observer warned the old saint not to be misled by changing customs.

"In the bad old days there were plenty of youngsters who misbehaved all year. Some of them smoked t-bing the barn and wrote obscene things on the out-house walls. In December, they abandoned such secret sins.

"Now they still smoke, but a different weed and not behind the barn, and they write the obscene things in the college paper. Basically they're not much different, but they're much more open about it."

## Conservation Projects

# Saving Lime Kilns in Limehouse Area Work

Due to the mild fall weather, work has progressed rapidly at Conservation Areas in Belfountain, Meadowvale and Limehouse owned by the Credit Valley Conservation Authority.

First phase of development is almost completed at Meadowvale. Roadways and parking lots have been built and fenced, general cleanup is finished and W. Timko Construction has begun building the washroom facilities and gatehouse. The northern quarter of the 118 acres at Meadowvale will be left as natural area with a walking trail along the river and nature trails throughout.

A mile of access road has been constructed from the gate on Exposing's Fifth Line into the Limehouse Conservation Area. This road has been built along the old railway base and through open areas; this little affecting the forested, rocky Escarpment edge where this area is located.

Limehouse contains almost 200 acres of forest, stream, old limestone quarry and lime kilns and these areas are being deliberately protected as much as possible during development.

The lookout site has been cleared at Belfountain and will make the scenic area along the gorge ac-

cessible to the public. A new road and parking lot has been completed and the lower area along the river sodded to extend the picnic facilities. This was formerly taken up with parking lot.

**WATERSHED ECOLOGY**  
Dr. Roger Frost and nine of his Applied Ecology students from Erindale College attended a recent meeting of the Credit Valley Conservation Authority.

These students are studying the Credit River Watershed this year and were observing the Authority in action following a preliminary

seminar at the college with the information officer from the Authority.

On being advised that the County of Peel would be designating scenic roads in the near future, the

Authority asked the students to submit their suggestions on the criteria for scenic roads. These criteria may be used by Authority committee submitting suggestions to the County.



Oecil VanGelder, Bob McCann, Jim Wilson and Doug Weston of the Credit Valley Conservation Authority staff set post along access road. -CVCA Photo by Joan Hillings

## 72 Percent Choose Scotch Pine Trees

Christmas trees on display at the recent Royal Agricultural Winter Fair in Toronto were judged by E. F. "Pud" Johnston, timber supervisor of the department of lands and forests' Lake Erie District.

Members of the Christmas Tree Growers' Association of Ontario were also on hand to offer advice and information pertaining to their industry.

Natural Christmas trees - Scotch pine, white spruce, and other species grown and pruned especially for the Christmas tree market - are a tradition with Canadian families.

**POPULAR SCOTCH**  
In a telephone survey, made in Metropolitan Toronto by the Christmas Tree Growers' Association, it was found that Scotch pine was the most popular species comprising 72 per cent of the total natural tree users. Spruce and fir combined for an additional 25 per cent while the remaining users had other species.

Natural Christmas trees have a number of advantages over artificial ones. For instance, they help counteract air pollution by converting carbon dioxide into oxygen. Oxygen production is highest during the first 10 years of growth and afterwards slows appreciably.

**STAND IN WATER**  
To ensure that your tree remains

frame resistant, cut off about two inches from the bottom. Stand it in water and refill the container daily. Water absorbed through the trunk helps prevent the tree from drying

out and the needles from dropping. Place the tree away from heat outlets. See the electric cords aren't frayed or sockets aren't cracked or broken. Turn off the tree lights when the room is to be unoccupied.

# Notice to Residents

## TOWN OF GEORGETOWN

The council has entered into an agreement with the Ontario Humane Society to provide animal control services within the town of Georgetown. To assist all residents in availing themselves of this service, the council has implemented the use of a Zenith telephone number to the Animal Shelter in Cooksville, Ontario.

Effective immediately please call the operator and request Zenith 3-2330 for this specific service.

G. D. PRITCHARD  
Clerk Administrator

**"It's the best rally car we've ever had."**

Walter Boyce and Doug Woods, 1971 Canadian National Rally Champions, talk about their rally winning Toyota Corolla 1600 Coupe.

"First in six out of seven rallies isn't bad. That's more than 5,000 rally miles and over 25,000 actual miles in our Corolla 1600. That's proof enough for us.

"What we had to drive through and over and in to win those rallies you wouldn't believe. But our Corolla just kept coming back for more, rally after rally...no matter how hard we pushed it.

"The Corolla is just one of those cars you can rely on. You get this feeling of confidence when you're driving that it can take anything. We didn't win the National Championship with a weakling. We had just about the most dependable and best car anyone could have."

If the Toyota Corolla is the best car Walter Boyce and Doug Woods have come across for their kind of driving, it figures it's got to be the best for your kind of driving, too.

**TOYOTA**

umi Toyota cars are sold and serviced from coast to coast in Canada and throughout the world.

**PARK TOYOTA** HIGHWAY 7, GEORGETOWN TEL. 877-9439