

Ads That Pay

You can place an ad in The Herald's Classified pages by phoning 877-2201. Buying or selling. The Herald is where you will find the results you want.

Second Class Mail Registered Number — 0913 Return Postage Guaranteed

GEORGETOWN HERALD

The Home Newspaper for Georgetown and District

THURSDAY, NOVEMBER 25, 1971

Printing-Publishing

The Georgetown Herald has served Georgetown and district as Printers and Publishers for over a century offering the best in fine printing and news coverage.

\$7.50 per year. Single Copy Price Fifteen Cents



AT THE HILL WILLIAM (FORMAL) STOMP

Four members of the backwoods elite at their social function of the year are Jamie Cusson and Marsha Jones, Steve Walters. The annual Sadie Hawkins whoop-up was at the Georgetown high school Friday.

Agree to Alternate Route

120 Foot Hydro Towers Will March Across North Halton

Ontario Hydro officials told an overflow meeting of ratepayers in Nassagaweya Tuesday they would follow an alternate route for a 500,000 volt transmission line through the township if Council felt it would lessen the impact on the township.

J. M. Sheldon, property planner with Ontario Hydro, emphasized the utility still favoured a diagonal line across the township, but was prepared to follow an alternate route advanced last year by Nassagaweya Planning Board and Council. The alternate route would enter from Puslinch, cross between lot 23 and 24 and go north on the west half of the fourth concession.

140 MILES

The power line is part of a 140 mile long 500,000 volt transmission line linking Nanticoke and Pickering and being in with a supply line from the James Bay area. The line crosses 16 municipalities. The province, in a document released August 1971 has indicated the line will cross Nassagaweya Township. Officials of the township had earlier hoped the line could be included in the proposed utility corridor further toward the lake.

Hydro officials explained the right of way sought would be 610 feet wide with 120 to 130 foot high towers located approximately 1,000 feet apart. Plans called for single line in the right of way now, a second in approximately 10 years and a third some time later.

CUTTING

W. D. Peters, Hydro forester reviewed the change in policy that sees only selective cutting on the right of way rather than total clearing. "We leave as many trees as possible," he emphasized. At road and river crossings a screen of trees 100 feet in width is left as are

trees in the valleys of the right of way he told the crowd.

Mr. Sheldon told the meeting the hydro route would enter the township at lot 23-24 and cross in a diagonal line leaving at highway 7. It would require removal of two dwellings, two sets of buildings, affect 25 property owners, be five and a half miles long and affect a minimum amount of bush mainly in the vicinity of the Blue Springs Creek, the Lee estate and the Ackman property. He said 400 acres of land would be involved.

EXPENSIVE

The alternate route, approximately as suggested by the township last year, would affect one set of buildings, slide by a number of buildings, be a mile and a half longer, add several very expensive angles, affect the Halton County forest, cross two of the highest points of land in the township, affect the view in the Blue Springs Creek area, reduce the visual impact from the road by being between the lot lines, retain a diagonal direction at the northern corner of the township and cost approximately \$1,000,000 more.

INTERFERENCE

Bruce MacOdrum representing the Sierra Club, a conservation body, urged Hydro to make studies available that were used to convince the provincial government the transmission line couldn't be placed in the utility corridor proposed in conjunction with the Toronto Centred Region report.

To a question regarding the impact on health and radio and television interference, E. M. Wadge, supervision project engineer said there would be no effect on health. If radio and television interference occurred Hydro would have to eliminate it

even to the extent of installing a new antenna.

SCARE STATEMENTS

R. A. McPhail, district forester with hydro said all trees possible would be left along the route. If trees came within 10 feet of the line they would be pruned. Trees would reach about 25 feet in height at the line's lowest point.

Hon. George Kerr told the meeting the line was absolutely necessary and he cautioned ratepayers about listening to "a lot of scare statements". He suggested the property separations required for the line would have to be heard by the local committee of adjustment and would be subjected to appeal to the Ontario Municipal Board.

Giving Beef Herd to His Employees

Thirty-two head of beef are fattening up at Paul Durish's farm at Erin and Terra Cotta until Dec. 15.

And then Mr. Durish, 35, president of McKee Brothers Ltd., will give the herd to his 120 employees as a Christmas gift. He made the promise last spring on the condition they increase their output by August, and they did.

Each worker at the snowblower manufacturing company should net about 150 pounds of beef for his freezer on Dec. 15, Mr. Durish's birthday.

Timothy Healy was the first governor general of the Irish Free State.

Holding Clinic For Snowmobile Operators

Two-hours-plus of just about everything a snowmobile operator needs to know will be on the agenda at a snowmobilers' clinic in Wrigglesworth auditorium November 30. Georgetown and district snowmobile club are presenting the clinic with the cooperation of police. There is no admission charge.

The program will include messages from Ariens and Bosch sparkplug speakers, a St. John Ambulance team on treatment of frost bite and injury, Murt Allison on extra equipment for snowmobile trips, and a Georgetown police officer on provincial and local laws regarding the snowmobile.

A film will be shown prior to refreshments after which there will be an open discussion period.

Claims Strip of Land Becoming Litter Field

A strip of land 20' wide adjacent to 54 Chelvin Drive is becoming a litter field and a playground, Mrs. L. E. Sprigg told council in committee Thursday night.

Speaking on behalf of other residents, she asked for permission to fence the town owned land, or failing that, that it be sold to the abutting neighbours.

She pointed out that the fencing would be temporary, and they understood the land would still be owned by the town.

ONE OF MANY

Cr. Ern. Hyde, chairman for the evening, pointed out the land is an access to privately owned land,

Georgetown Council Briefs

Mud on the streets where houses are under construction may soon be a thing of the past. Council in committee decided to incorporate a control in to the building by-law. The suggestion has been made that a deposit be made when the building permit is taken out, and if the contractor does not clean up the mud, the town will do so and deduct the expense from the deposit.

Ken Marsh of Criterion Carpets appearing before committee for the second time, again asked for a second sign, on his building. Both signs would be mounted flush to the building. He said the sign on the side would be identical to the one on the front. He received no direct answer.

Cr. Joan Smith suggested industrial land not being used should be bought back by the town. As a result of a general discussion, council decided to ask the Industrial Commission to report to council on the state of industrial land in town.

which may become public some day. "It is useless, and looks like it will never be used, that's something else," he remarked.

Cr. Joan Smith pointed out there were many other strips of land like this. "We have so little park land we have to guard any public land we might have," she added.

WHOLE QUESTION

Cr. Donna Denison emphasized that the maintenance of such pieces of property must be included in any future budgets.

"Some want them open and some want them closed", commented Cr. Joan Smith.

The whole question of walkways is presently being studied.

Rash of Motor Accidents Involves \$5,000 Damage

Automobile accidents on Georgetown streets in the past couple of weeks have produced over \$5,000 damage. But the only resulting injury was a minor one.

There were two accidents Saturday, both in parking lots.

Keith C. Laver of R.R.1 Georgetown and Eaton Tansley were the drivers in a collision on the downtown parking lot. Laver's 1965 Ford suffered only \$50 damage, and the taxi cab driven by Tansley \$200.

A 1968 Thunderbird driven by Mrs. Julia Ann Timmins, R.R.2 Georgetown, received an estimated \$230 while parked unattended in a small lot beside the downtown branch of the Canadian Imperial Bank of Commerce. The driver of the other vehicle failed to remain.

Five hundred dollars damage was done to a 1968 Chrysler driven by Stuart John Myles of Guelph on Guelph Street in front of the Georgetown Market parking lot November 13.

Police said the eastbound car left the road, entered the ditch and swerved back onto the road.

In a collision the same day James T. Gibson of 150 Delrex Blvd. had \$50 done to his 1963 Pontiac and Andreas Sigmund Falk of Milke \$250 to his 1971 Volkswagen in a collision on Delrex at Mountainview Road.

The Guelph-Mountainview intersection was the scene of an accident November 12 which resulted in \$400 to a 1963 Mercury driven by Dorothy Christie of 11 Mountainview Road and \$600 to a 1964 Ford driven by Frank Carroll of Norval.

A November 11 collision did \$100 damage to a 1963 Chevy 11 driven by David Lloyd Bell of 49 Delrex Blvd. and a 1970 Pontiac driven by

Johanna Pool of Terra Cotta received \$150 damage.

Police put the damage at \$60 to a 1964 Chrysler driven by Larry Grace, 54 Normandy Blvd., and \$250 to a 1970 Pontiac driven by Michael Singleton of 159 Delrex Blvd. after a collision November 10 on Guelph St. opposite Wrigglesworth public school.

Later the same day, cars operated by Alva Hill of 62 Langstone and Walter Muise of 12 Wesleyan Street were involved in an accident opposite 164 Guelph Street. The estimate was \$35 to Hill's 1965 Meteor and \$170 to Muise's 1968 Ford.

November 9th also saw two accidents with expensive results. A 1966 Chevle driven by James MacPherson of 51 Ewing Street received \$1,200 damage and a 1971 Ford driven by William Booker of R.R.3 Milton \$150 damage when they met at the Guelph-Mountainview intersection. Five hundred dollars and \$250 respectively were the estimates when cars driven by Vernon O'Hara of R.R.4 Georgetown and Margaret Martin of 10 Churchill Crescent collided on Sinclair near Guelph Street.

Mrs. Martin suffered a minor injury.

Try, Try Again

In an effort to settle the four month long hydro strike, representatives of union and management are meeting with W. J. McGuire, a mediator officer for the Ontario Labour Relations Board on Friday.

Local 1766, U.E.W., will be represented by Bob Ezard, Richard Warnes of Oakville and probably an international representative.

Hospital Expansion Gets OHSC Approval

The Herald has learned the Georgetown and District Memorial Hospital now appears to be definitely on their way to an expansion of their outpatient facilities.

In a letter dated November 8th, 1971 signed by Mr. D. N. Teasdale, Director of the Hospital Planning Division of the Ontario Hospital Services Commission, advised:

"The master plan drawings and schematics for the immediate project diagnostic and treatment facilities have been reviewed by the Commission Consultants. We are pleased to advise that these plans are considered acceptable, and are hereby approved."

This approval was given after protracted effort dating back to 1966 when the Hospital Board realized the need for improvement in the paediatric facilities and the need for chronic care beds.

NEEDS SURVEY

In February 1966 a "Bed Needs Survey" was authorized to be carried out by the O.H.S.C. The result of this survey and the Hospital Board's Request was that the Board received "Approval in Principle" on September 14th 1967 to plan a 22 bed addition together with the upgrading of the Hospital's service departments as required.

Following receipt of this approval a long period of preparation and planning took place until the Government Imposed Financial Constraints in January 1969. At this time the government ordered all hospital construction projects to be shelved because of the prevailing tight money situation.

During the following two years the hospital became more and more overcrowded and the service areas such as the Emergency Department, X-Ray, Laboratory and Physiotherapy Departments were bulging at the seams. This was due to lack of space and the increased volume of patients at the time the town was growing.

In late 1969 and early 1970, in keeping with the Provincial Government's policy of regionalization the Halton and Peel Regional Hospitals Council was formed, and at the instigation of the Provincial Government a Regional

Role Study was carried out by an independent firm of consultants. According to the recommendations contained in this Role Study the Georgetown Hospital still required the 22 bed addition plus expanded services which had been previously approved in 1967.

\$ MILLION AND HALF

Once again at the urging of the Hospital Board and following a deputation to the Minister of Health, approval in principle was once again granted in October 1970 to proceed to plan for a 22 bed addition with necessary upgrading and expansion of outpatient facilities. As planning proceeded with the architects and the commission, the proposed addition shaped up at a cost of approximately 1.5 to 1.6 million dollars.

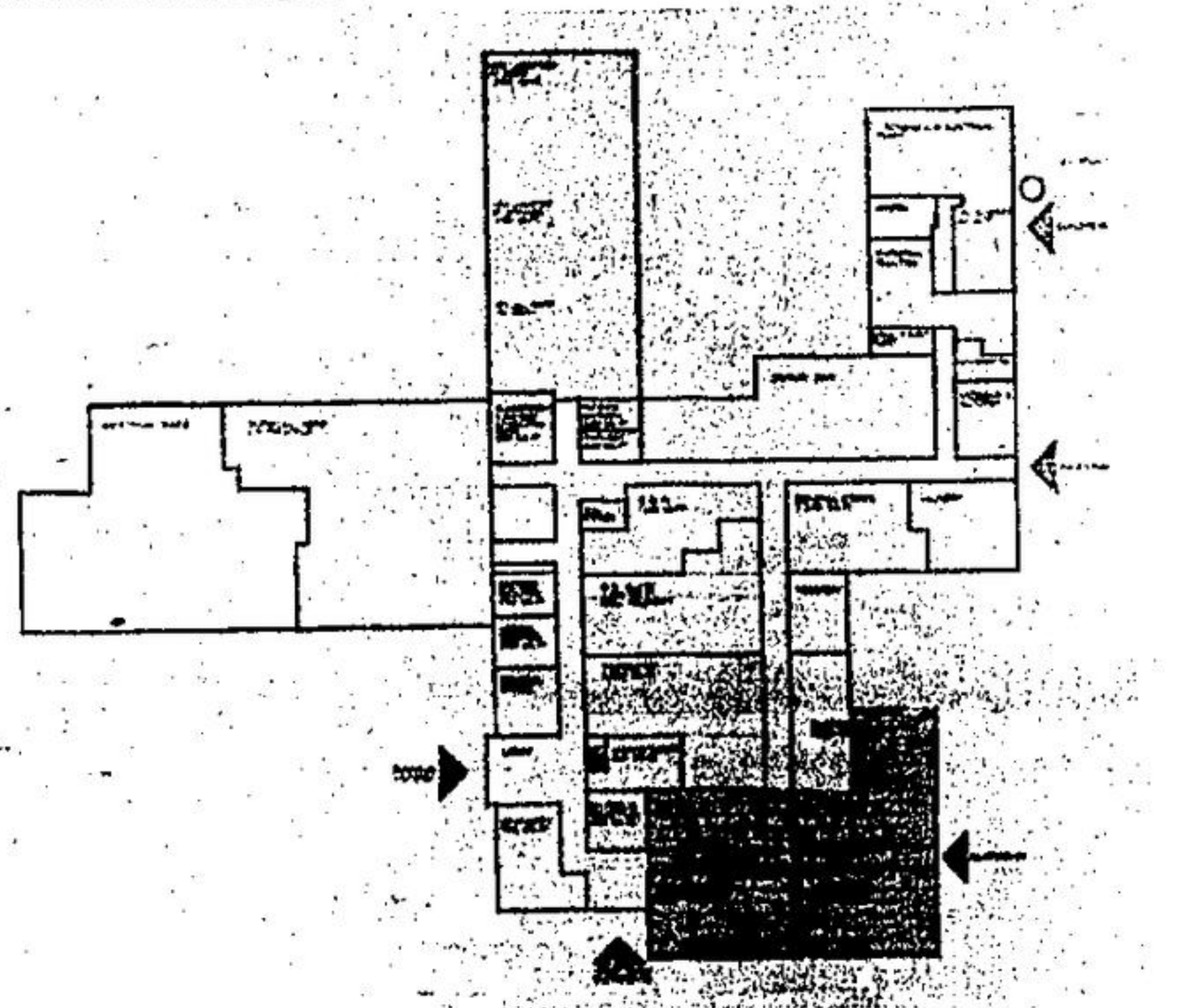
At this point the Commission advised that their approval in principle did not extend to actual construction and that this was really only planning for the future when funds could be made available. Once again the Board sought to impress upon the Commission the increasing urgency of our situation with outpatient facilities in particular now servicing twice the number of patients for which it was designed.

With the assistance of the Honourable James Snow, M.P.P. for Halton East, Minister without Portfolio, the Commission conceded that at least part of the scheme could go forward where the greatest urgency existed. Approval for specific construction in the outpatient and service areas at a cost not to exceed \$750,000.00 then followed, June 4, 1971. The addition of more beds will therefore be left to a later phase.

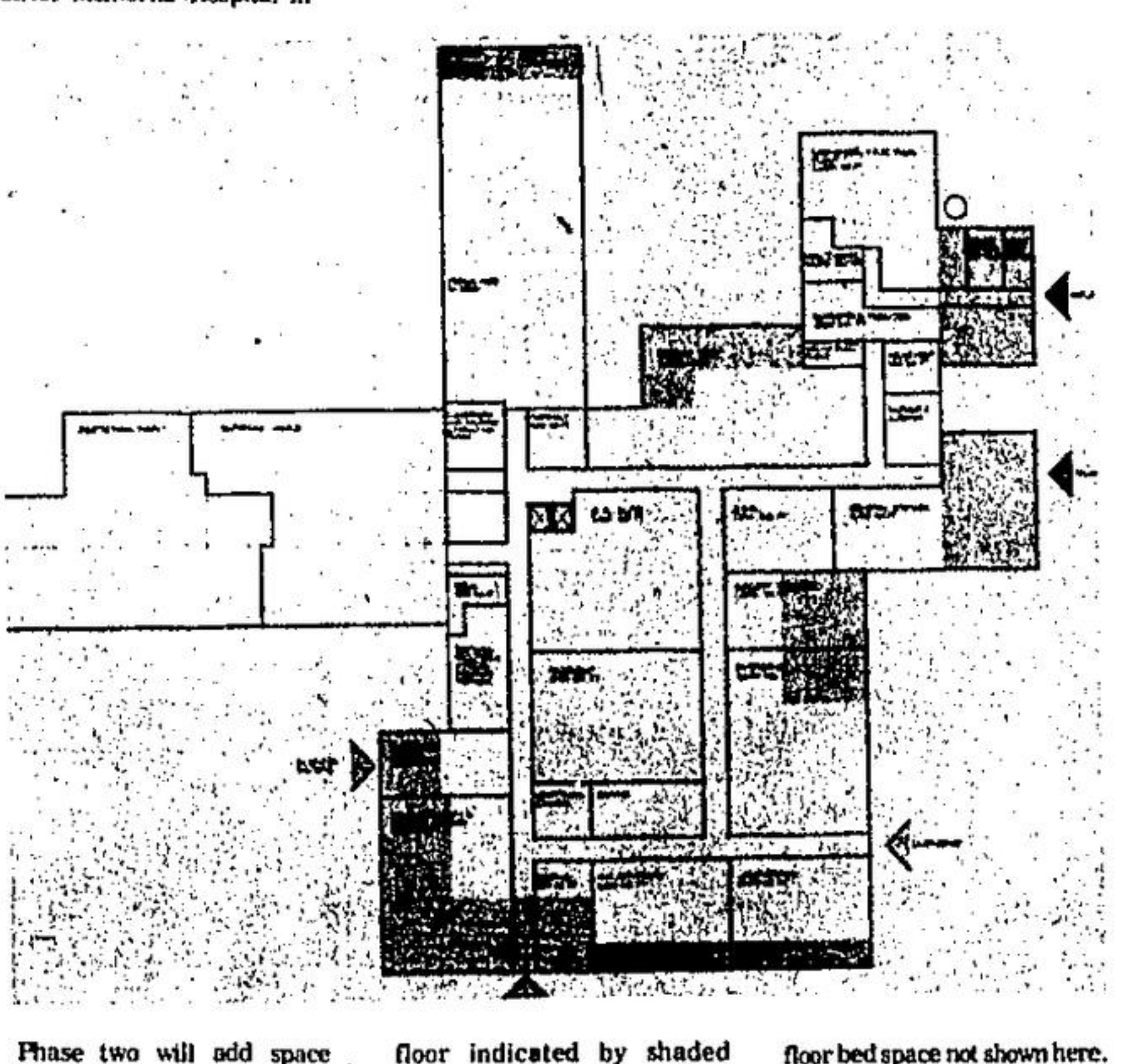
The service which will be approved will include larger x-ray, emergency, physiotherapy and laboratory facilities and reshuffling of other facilities to improve them, in particular, the paediatric area.

FIVE YEARS

It has taken five (5) years to overcome the hurdles to get this expansion project off the ground. Hospital construction costs are financed by provincial grants two-thirds and local community one-third. For the local one-third totalling \$250,000.00 the Hospital Board is approaching the municipalities of Halton County, Town of Georgetown and the Township of Esquesing, as it is felt the financial burden can thus be most equitably distributed among the persons who use the hospital.



Shaded areas indicate space to be added to Georgetown and District Memorial Hospital in the first phase of the expansion program there. Diagonally scribbled areas in the existing building will be converted.



Phase two will add space with additions to the ground floor indicated by shaded areas, plus second and third floor bed space not shown here.

New Offer To Venture Proposes Two Step Sale

Council in committee Thursday night made a counter offer to Venture Metalcraft of Weston, offering them the 2.7 acres of land at \$1,000 an acre in the industrial park, but in two parts.

The idea was to ensure the land was used, and covered by an adequate amount of building to give the town a return in taxes.

They agreed to sell 1.38 acres for \$1,000 an acre, provided a 10,000 sq. ft. building is erected and taxable as an operating business within a year, failing this the land and improvements would revert to the town.

HAVE OPTION

Building must begin on the other half of the land within two years or the land will revert to the town. Venture Metalcraft should they accept the offer will have an option

of land by buildings was about half what the Commission was shooting for. She said "double that would be ideal."

WANT INDUSTRY

Cr. Ern Hyde then suggested the selling of the land in two parts, so half would revert back to the town, if it was not used within a certain time. "Whether he hires 10 or 50 we want industry", concluded Cr. Hyde.

FEED THEM

Children and adults alike may enjoy the company of Canadian wild birds this winter if feeding stations are put together right away.



DOG PATCH FLAT FOOT

Even an Al Copp cop turned up at the Georgetown high school's annual Sadie Hawkins stomp Friday night. Marlon Vlietman is the Dog Patch Flat Foot trying to change the expression on sober-faced John Ackroyd.