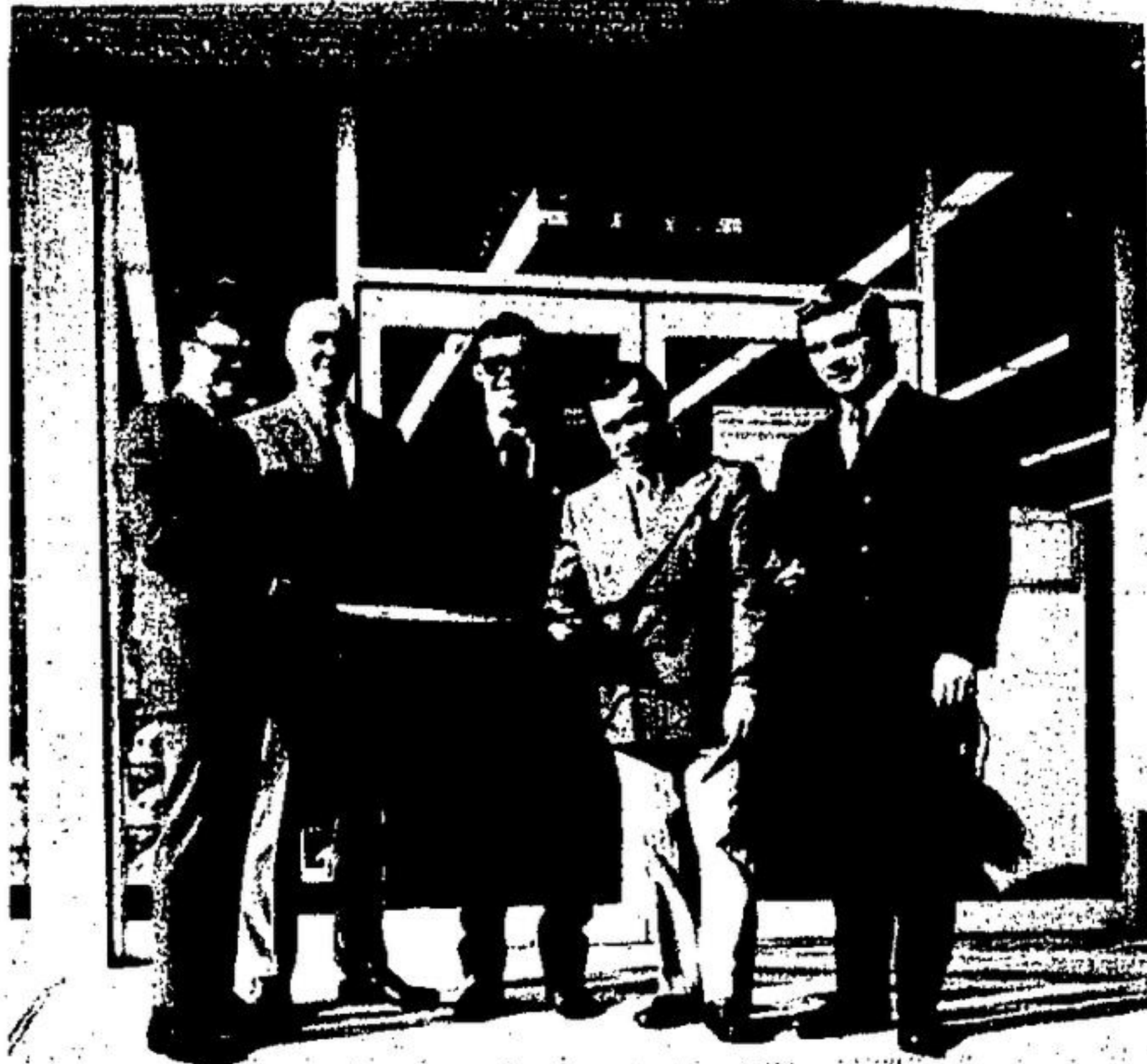


Canadian Tire Opens



FRIDAY CEREMONY MAKES IT OFFICIAL

Canadian Tire Corporation president Dean Muncaster, left, and Georgetown reeve Ric Morrow, hold the ribbon while mayor Bill Smith gives it the official snipping to officially open the new Canadian Tire Corporation store in the Georgetown Market, Friday morning. Beside Mr. Muncaster is Alex Barron, chairman of the board of directors, and next to him Murray Lawton, store proprietor.

Separate Decisions for Motel, Apartment Plans

A proposed motel and apartment on No. 7, Highway by Aler Investments is having a stormy ride.

The acreage on which it is planned, currently zoned industrial, has been approved for rezoning by the Planning Board and by council, the latter on a 5-4 majority vote.

Stumbling block in council has been the apartment. All councillors have expressed approval for the motel, but four oppose locating an apartment adjoining an industrial area.

Monday, a motion to split the rezoning into two separate by-laws carried on a 6-2 recorded vote.

Cr. Joan Smith, who made the motion, explained that she believes the two plans should not be included in one by-law. This precludes a councillor supporting one phase which he favours, she said.

LOST OUT

"The developer made one application to deal with one parcel of land and that's what we dealt with" said Cr. Ern Hyde.

"Mrs. Smith is feeling bad because she lost out to the majority rule."

Reeve Ric Morrow said he has talked to a resident who wrote a mail bag letter criticizing council for delaying the motel. When the reeve explained that the opposition is to an apartment, the resident suggested that the two matters should be decided separately, he said.

"I hope we won't bargain one against the other, but decide each on its own merits" said Cr. Phil Siddall.

Cr. Hyde said economics and land topography preclude one without the other and warned that denial for an apartment could defeat the motel plan too. Cr. Harry Levy said he is aware of this, but would support the motion for separate by-laws.

OPPOSITE

"This motion is opposite to what we decided at a committee meeting and I'm surprised that it has been presented" observed Cr. Hyde.

"I can agree with you up to a point" said Reeve Morrow "but sauce for the goose is sauce for the gander, and I recall a similar thing when a church location was being decided a few years ago."

Mayor Smith said he could not oppose the motion, although council should be aware of the developer's position, as pointed out by Crs. Hyde and Levy.

RECORDED

On a recorded vote, Mayor Smith, Reeve Morrow and Crs. Denison, Siddall, Smith and Levy favoured two by-laws, with Crs. Hyde and Sykes opposing. Deputy Reeve Speight was absent from the meeting.

Pottery Plant Tour For Ballinafad W.I.

As the topic was Agriculture and Canadian Industry for the November meeting of the W.I., a tour had been arranged to visit a local industry, The White Oak Pottery, R.R.3 Acton. Two carloads of ladies met at the home of the president Mrs. McEnery on Wednesday evening November 3rd. It was about a twenty minute drive from there to the pottery company.

Mr. Secord welcomed the ladies and explained the different steps as they went along, through the plant, in the making of beautiful pottery. Some of the group even tried and were successful in turning out some of the fascinating works of art. It was a most interesting visit. Before leaving Mrs. Smith, who had planned the tour, thanked Mr. Secord for giving members the opportunity of seeing this ancient craft done in the modern way. The ladies then journeyed to the home of Mrs. Sessoraitis who was hostess for the meeting. Mrs. Jesse McEnery opened in the usual way followed by the minutes of previous meeting. Correspondence was dealt with. Main items of business were discussed. Mrs. T. Owen, who was delegate to the Area Convention gave a good report. It stated that the convention next year would be in Stratford, that it might be some time before it would be held in Guelph again. As some thought it was only fair for their home as their turn came. Current events were given by Mrs. Jamieson. As the hour was getting late the motto was held over till December meeting.

The ladies were treated to a delicious lunch which was a bit out of the ordinary. They were served Baracuz, which is a Polish dish, a clear soup with the distinctive flavour of beet root. This was followed by "pieroski" a tiny little hot meat pastry triangle. To top off the meal the ever popular butter tarts were passed around. Mrs. Thomas Given assisted Mrs. Sessoraitis in serving the group.

At the recent Erin District High School commencement Miss Juliano Eckert received her diploma.

Although it was a perfect night for the Community Centre Euchre party, sponsored by the Hall board. There was not a large crowd. Nine tables were in play. Fifteen rounds were played. High lady was Mrs. Irene Watson. High gent Charlie Thompson.

The many Ballinafad friends of Mrs. Robert Warne will be pleased

Draw Winner Richer by \$530

Faith in the honesty of the ticket seller paid off for John Ferguson of Main Street Friday night. A couple of weeks ago he bought a book of Georgetown Minor Soccer Association 50-50 draw tickets from a seller who was temporarily out but promised to make them out in his name as soon as he could get some more.

When the winning ticket was drawn at the Soccer Association's dance it was John Ferguson's. The win was worth \$530, half the \$1,060 total proceeds.

A prize for the boy selling the most tickets went to Steven Bevan who disposed of 18 books. Andy Long sold 15 books, and Herb Kewley, 13 books.

Esqueuing Council Briefs

Esqueuing council on Monday okayed the holding of a lottery by Mountain-Union Women's Institute at their bazaar in Ligny Hall.

A letter from the Halton County Health Unit informed council that Willow Park trailer camp in Norval was well lit and maintained and had no sewage or water problems. They recommended the maximum number of serviced lots be 20. There are 16 serviced lots now.

Council hired Mrs. Vera Nasalski as bookkeeper at a salary of \$5,720 a year.

Building inspector Tom McLean reported a total of \$167,612 in building permits issued during October, with fees accruing to the township of \$27.

An outside light, which was intended for the works garage will now be erected on the new firehall. Reeve Tom Hill objected claiming the township should be paid for it since they bought it, but he was overruled. The deputy-reeve pointed out it was not being used anyway.

The installation of 25 street lights in Milton Heights will cost \$48,170, council was told in a letter from Ontario Rural Hydro. Three of the lights would be in Nassagaweya. The cost would be borne by the residents of the area, as it was added to their tax bill.

The cost of coffee, provided at committee meetings and Planning Board meetings will be paid out of petty cash from now on, council decided Monday night. Up till now it has been paid by the employees out of their own coffee fund. Council felt it was unfair they should pay for the coffee for the members of boards and committees.

NORVAL SHELL SERVICE

- LICENSED MECHANICS
- GENERAL REPAIRS
- 24 HOUR EMERGENCY TOWING

Radio Dispatched
PHONE 677-9411
(Day or Night)
KEITH D. ELLA
Open every Ev'g. til 10 p.m.

What A Wonderful Way To Say "Merry Christmas"

GIVE HER A
General Electric

DISHWASHER

The Great **wifesaver**

CORDIALE

Two Wash Cycles:
Normal - for everyday loads.
Rinse & Hold - rinse part-loads and hold until you have a full load.

3-Level Thoro Wash. A large Power Arm washes up from the bottom and sides, and the Power Tower jets water over all dishes from the middle. A third level, the Power Shower spray arm washes downward so dishes are caught in a crossfire of hot, detergent water.

Automatic Detergent Dispenser. Adds detergent to wash cycle at correct time.

Soft Food Disposer. Load dirty dishes without pre-rinsing. Just tip off large or hard scraps. The soft food disposer liquifies soft food and washes it away.

Tuff-Tub Interior. Space-age Epoxy coated interior, resists peeling, chipping, cracking and staining. And it still cushions your dishes and glasses.

\$289⁹⁵

Portable Dishwasher SM170N

FREE 15 lbs of Detergent DISHWASHER - ALL With Purchase of Any G.E. Dishwasher

WIGO TV AND APPLIANCES

DOWNTOWN GEORGETOWN 877-3376

CHARGE OR USE OUR LAY AWAY PLAN

POLAR ANTI-FREEZE Sale

This Week Only

2.29 GALLON

Great 'Cold War' Weapon
Top-grade 'Ethylene Glycol'

We're mighty proud of our Polar brand Anti-Freeze. Proud too, to be able to offer it at this low reduced price. Just 6 qts. (15 gals.) protects a 12-qt. cooling system to 34° below and year 'round too! For all cars and trucks including aluminum blocks. Chromate compatible for diesels etc.

PERMANENT TYPE (ETHYLENE GLYCOL) 29-2050

WARNING POISON

4.54 LITRES

Winterizing aids to make the going a little smoother

| | | | | |
|---|--|---|---|---|
| A. ELECTRIC BATTERY BLANKET Fibreglass-insulated 80-watt 115-volt element; oil/acid-resistant cover. Fits most batteries. 6.79 | F. WINDSHIELD PROTECTOR Shaped plastic; universal fit for most cars. Saves scraping! .89 | L. RADIATOR STOP-LEAK CUBES Metallic seal works with anti-freeze in any make of car. .21 | O. WINDSHIELD WASHER ANTI-FREEZE Good to 20° below. Pre-mixed ready to use direct from polycarbonate container. 1 imp. gallon. .88 | R. "QUICK START" 15-oz. spray lubricates cylinder. .85 |
| B. 12-V. BATTERY CHARGER Keep it under your hood or mount on wall. Cord extends through grille; 1 amp; 60-cyc. AC. 8.99 | G. ELECTRIC FROST SHIELD 13 x 30" clear plastic; wire grid; under-dash switch. 12-v. Size 13 x 30" Frost shield. 6.99 | M. WINDSHIELD DE-ICER Melts ice chemically. 16-oz. squeeze-spray bottle. .44 | P. "INSTANT TRACTION" Spray on tire tread for good grip on ice or snow. 6-oz. can. 1.49 | S. PIT STOP SEALER 16-oz. for leaks in cooling system. .79 |
| C. BATTERY HYDROMETER Measures the specific gravity of your battery charge. .98 | H. PLASTIC "CLEAR SHIELDS" For side windows. In pairs: 7 x 17"-51.19; 7 x 13" pair. .99 | N. SNOWBRUSH KE-SCRAPER Nylon bristles, 10" squeeze scraper. 25.7" handle in varnished hard wood - dandy all-in-one unit! 1.99 | Q. IGNITION SPRAY Plastic coating seals out moisture, aids starts. 6 fl. oz. .69 | T. MOTO-MASTER GAS FLOW Prevents frozen gas lines. 20-oz. can, 69c; 4-oz. can. .19 |
| D. BATTERY FILLER Heavy red rubber bulb with bakelite stem. 11" overall. .89 | J. "KLEER-VUE" DEFOGGER For rear window; shelf in 19-55-57 cars; 12-v. 11-D. motor. 24.99 | U. STEERING WHEEL COVER Soft "Kozy" cover. Various colored upholstery fabrics. .45 | | |
| E. ANTI-CORROSION WASHERS Rids battery terminals of power-robbing deposits. Pair. .25 | K. MOR-POWER PRE-HEATER Compact 5 1/2 x 2 1/2 x 7 1/2". 115-volt element; 3-wire cord. 12.49 | | | |

CANADIAN TIRE

MURRAY LAWTON LIMITED
877-5181-42-83 226 Guelph St.

EXTRA! Cash and Carry BONUS COUPONS

Apply for a CANADIAN TIRE Credit Card