

Summer Sessions, Figure Skaters 'Prep' for Season

Mothballs are not the 'in' thing for a number of Georgetown figure skaters.

Leslie Tonna, in particular, has had numerous accomplishments while attending Weston skating school. Eleven-year-old Leslie has now passed her Second Figure, one of her Senior Bronze Dances, plus her Bronze Free Skating with a performance that dazzled the judges.

Debbie Lounds has been kept busy at Weston, working on her Sixth Figure and passing the American Waltz.

Kerri Hegstrom attended Weston during April and May.

Travelling to Lakeshore in May was Cathy Elliger. During July, Todd Kuston, Sandra Fendley and Sharon Hewitt skated at Ross Garner's summer school in Oakville.

In August, Hayley Quinn, Patricia Walker, Linda Corbett, Kelly Mieczanec and Tara Smith skated during the day session, and Tracey and Heather Moores.

Joins Newfoundland University Staff



James G. English, son of Mr. and Mrs. Max English, 5 Weber Drive, Georgetown, graduated May 29th from University of Waterloo with a B.S. degree in Mechanical Engineering. Mr. English has accepted a position with the Memorial University, St. John's, Newfoundland on the Faculty of Ocean Engineering as a project engineer. One of the first projects he will be involved with is the construction of an underwater habitat. Mr. English and his wife, Ruth Ann, plan to leave for Newfoundland in the middle of September.

Mr. English has been working for his fourth summer at the Great Lakes Research Institute, Lake Huron, involving underwater studies on pollution, currents and marine life. Mrs. English has been with the Victorian Order of Nurses in Kitchener-Waterloo, and will transfer to the V.O.N. branch in St. John's this fall.

Debbie Jarvie, Laura Yerxa and Sharon and David Watson at night. Sharon is back skating after a successful knee operation in May.

Test day, August 21, at Oakville proved favourable for Hayley Quinn, who passed Preliminary Figure, Dutch Waltz and Canasta Tango; Laura Yerxa, the 'Swing Dance'; Debbie Jarvie, Fourteen Step, and Heather Moores, Foxtrot.

In September most of the senior skaters will return to Lakeshore to keep in shape until

the Georgetown ice is in. Extra ice time gives them practice, and practice becomes progress.

The club has been fortunate in retaining the same professionals as last season, Rick Dowling, Gale Verhaegen and Sharon Dwyer.

Rick has been exceptionally busy teaching at Lakeshore in May, and at Oakville all summer. Gale and Sharon have been practicing themselves at Oakville.

Skating resumes at Georgetown in October.

Mayor Seeking Bathtub Honours

Mayor Bill Smith will carry Georgetown's banner in a bathtub race on the waterfront at the Canadian National Exhibition, August 30.

The race, open to all Ontario mayors will give the politicians a chance to come clean.

Mayor William Dennison of Toronto accepted the challenge thrown by Mayor David Brown of Orillia, voicing the suspicion that the mayor of Orillia with two lakes available for practice had an unfair advantage.

The mayors will compete in specially built fiberglass tubs, powered by six horsepower outboard motors.

James Perrin, public relations

director for the waterfront activities, says the only lady to enter as yet, is the lady mayor of Prescott. Mayor Bill Smith is issuing a challenge to all the mayors in Halton County to the big splash.

Gold Seal for Local Holstein

Hanlan Lady Lea, a purebred Holstein cow in the herd of Jack Bryans, Georgetown, has recently been awarded a Gold Seal production certificate by the Holstein-Friesian Association of Canada for her total production. In twelve lactations on twice-a-day milking, Lady Lea produced 182,117 lbs. milk containing 6,659 lbs. fat, average tests 3.69 percent butterfat. Lady Lea has one daughter classified "Very Good" for body conformation.

Saw Two Moons Dissolve In Smoke

Unexplained is a mysterious sight viewed by Herb Herder, 19 McGillivray Crescent, Thursday night.

Mr. Herder was outside his home shortly after 10.30 p.m. when he saw two objects floating in the sky.

"They were about the size of three-quarter moons", Mr. Herder told the Herald "and a very brilliant yellow."

They were travelling from southwest to northeast and as he watched, first one, then the other, appeared to burn itself out, he said. He could see white smoke.

No one else has reported the sight. One possibility could be an unusual reflection from the fire-

works display at the CNE which opened that night. DID YOU KNOW? The peanut grows upon a vine.

M. P. VAN HARTEN

ONTARIO LAND SURVEYOR

97 Confederation St. Phone 877-4321 Glen Williams, Ont.

NEW MODERN STORE FOR RENT

and UPSTAIRS OFFICE SPACE
In the heart of downtown
877-9654

Explains Ice Charges

(Continued from Page 1)

deficit reduction and increase per participant are as follows:

GROUP	NET RATE	DEFICIT RED'N	SERVES EACH	DEFICIT RED'N
Legion Hockey	13.00	1650	600	2.75
Tyke Hockey	13.25	550	170	3.25
Rep. Hockey	14.70	1640	130	12.60
Fig. Skating	14.10	1075	300	3.60

The total deficit reduction is therefore \$4915, more or less.

Reviewing each group in turn; The Legion presently charges each participant a fee of \$3 per year. Without any increase in cost to the group the fee would become \$6 which works out at .25c per participant per week. There is no suggestion intended that this course of action be taken but, if it were, the fee would still be lower than that of any of the other groups' fees is at present and significantly less than is paid in many other communities. Nevertheless the rate increase has been protested.

The Tyke fee is presently \$8 per year and this group has previously indicated that they realize that costs must be met and would thoroughly expect to be able to accommodate an increase in the order of that proposed and set by the Committee. No objection to the new rates has been made by them.

The Rep. Group fee is \$10 per year and this group has acknowledged a willingness to meet increased rates and even proposed a recommendation in that regard to the Committee. The particular difficulty which this group faces is the limited number of participants in the programme related to the hours of ice time required. The Committee is faced with a deficit of over \$4000 and allocation of 25 percent of the normal weekly capacity of the Arena. Normally sponsorships contributions close this gap, or tend to, in many communities for this specialized activity.

The Figure Skating fee is a minimum of \$25 per year and this group has acknowledged the new rate as being acceptable.

A subsequent meeting has been held with the Legion and Rep. groups at their request and the Committee has agreed that due

to the earliness of the hour, the rate prior to 9 a.m. would be reduced by 50 percent and it would appear that this is as far as the Committee can go.

In essence then, the Committee has chosen this course of action in the opinion that the effect of the increase is not excessive. The public must determine if this action is well suited to the broad aspects of recreation. We must all determine if particular aspects of recreation are to be supported by the general levy, or, to what degree those who use the facilities should pay for their operation. These questions must be asked and answered in the light of increasing demands for recreation, the suggestions for new facilities and the astounding costs associated with them.

It is hoped that everyone will see that the Committee has made a carefully considered and responsible attempt to analyze its operations and meet its broad responsibilities.

Granddaughter Wins Trip to Disneyland

A four-day trip to Disneyland was a fine birthday present for little June Raymond of Calgary.

June, one of 14 children of Mr. and Mrs. Bert Raymond of Calgary, and granddaughter of Mrs. Henry Shepherd of town, won a draw sponsored by the Calgary Herald as a feature of children's day at the Calgary Stampede.

The next day was her seventh birthday.

She went to the show with five of her brothers and two of her sisters. One of the sisters, Mrs. Sue Watson, entered all their names in the lucky draw. One of her parents will accompany June on the trip to Los Angeles.

Mac's Milk

MOORE PARK PLAZA STORE

FRESH MEAT DEPARTMENT

MAPLE LEAF WAXED

BOLOGNA BY THE PIECE 35¢ Lb.

TASTY AND TENDER

CUBE STEAKS 99¢ Lb.

Cantaloupes

Canada No. 1 Grade

3 For \$1.00

Canada No. 1

SWEET CORN 65¢ Doz.

SILVERWOOD'S 1ST GRADE

CREAMERY BUTTER LB. 69¢

MAC'S PLASTIC OUTDOOR

GARBAGE BAGS 10's 39¢ Reg. 59c

MAC'S GRADE "A"

LARGE EGGS Doz. 43¢



Lean Minced Chuck 65¢ Lb.

MAC'S 18" FOIL WRAP 65¢ Roll Reg. 73c

MAC'S SLICED CHEESE 31¢ 8 oz. pkg. Mild Or Nippy Pkg.

DELMONTE Pineapple 3-89¢ 14 oz. Crushed Sliced Chunks In Its Own Juice

SPECIALS ON SALE AUGUST 26-27-28

PUTTING YOU FIRST KEEPS US FIRST



EXQUISITE RAVINE SETTING — This magnificent back split has a lovely big family room with stone fireplace and sliding patio doors to a terrace patio that overlooks the whole valley below. Four extra large bedrooms, some with double closets. Separate living-room and dining room both with broadloom. Dishwasher, stove and frig. included. A five piece and a two piece bathroom, double garage. Extremely well landscaped lot in an exclusive district. A dream of a buy at \$39,900

BELFOUNTAIN — Cute little two bedroom insulated cottage, sunroom living room and kitchen. Oil space heated. Low taxes \$50 yearly. Immediate possession. Ask for Helen Atkinson \$18,500

HEY DAD! — show the family this big six room bungalow that backs onto a park and they'll think you're the greatest. The recreation room is 90 percent complete and includes a bar and fridge. Carport, paved drive and fenced lot. Low 8 1/4 percent mortgage. Attractively priced at \$27,500

MOST APPEALING — Large six room brick bungalow with carport, paved drive, cleverly situated on a high lot overlooking the town. Broadloom in living room and dining room, lowered sofa doors to dream kitchen and three bedrooms. 8 1/4 percent first mortgage. A great home for your family. See it today \$27,900

A NATURAL BEAUTY — Nature's beauty surrounds you in this lovely treed and landscaped property. Six rooms in absolutely spotless condition. One bedroom is dormitory size, big enough for two double beds. Open hearth fireplace in living-room and broadloom throughout. Garage. Full price just \$29,500

DUPLEX — Two completely self-contained apartments, big lot, one block from downtown, monthly gross rental \$300. A real chance for a young couple to live in one suite and rent the other to help build some capital \$29,500



JUST RIGHT — Yes, this fine three bedroom solid brick bungalow is just right for the family that's looking for good economical living in a very convenient location. A must to see at \$23,900

WHY WAIT TO BUILD — when you can buy a home like this solid brick, centre hall bungalow with mature trees and landscaping already in. The rooms are extra big and it has a bath en-suite. Attached garage and paved drive. 8 1/4 percent first mortgage that carries for \$184 monthly, including taxes. It's a "smoothie"! Ready, Set, Move \$30,800

PRESTIGE LOCATION — This fine four bedroom brick bungalow with its spacious rooms and very large lot is an exceptional home. Two bathrooms, one en-suite, formal dining room, attached garage and private patio. Recreation room started. 7 1/4 percent mortgage. A must to see \$30,900

REAL COUNTRY LIVING — Massive two storey four bedroom home now under construction, south of town near No. 401 interchange. Open hearth fireplace in family room, formal dining room, two bathrooms and two car garage. Plenty of time to choose colors. Be sure to see it soon \$35,500

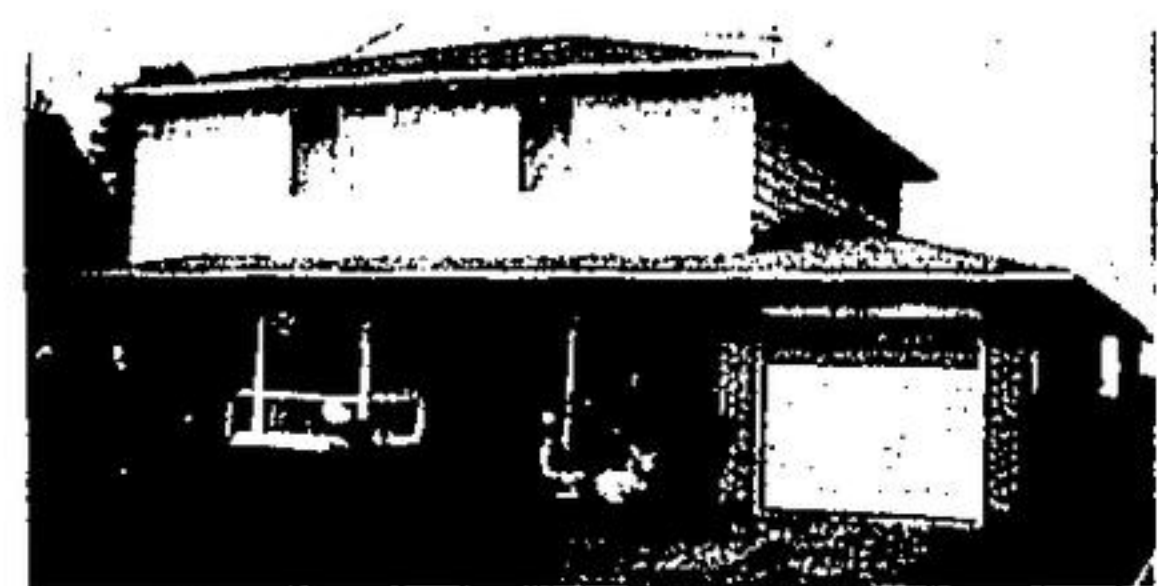


ABSOLUTELY SPOTLESS — Six room brick bungalow with attached carport, completely fenced lot with a private patio. Formal dining room, beautifully decorated, move right in there's nothing to do. 8 1/4 percent first mortgage. Asking price \$27,400

COUNTRY RANCHER — Sparkling 6 room country rancher, custom built with many extras on 1/2 acre near Credit River. Broadloom throughout, fieldstone fireplace, double car garage, two baths, excellent financing \$38,900

LIVE BETTER. LIVE CAREFREE — Why not give your wife and family the joy and pleasure of living in a new split level home that's located in the country, convenient to a General Store and school bus at the door. Marble fireplace in living room, massive family room, three bedrooms, two bathrooms and two car garage. Let's drive out and see it today! It's only \$34,900

SOOTHING GREEN — Broadloom over the hardwood in a spacious living room, dining room and halls. Three master size bedrooms with bath en-suite. Attractively finished family room. The washer, dryer, colored frig, stove, dishwasher and water softener are all included and if you're real sharp, they may include some drapes. This sturdy stone front split level with 2 car garage is one of the most popular models in town. Be our guest! \$25,900



NO TRAFFIC — to annoy you, other than your good neighbours on this ideal crescent location plus a park for your children to play. Loads of room in the grand two storey; four bedroom home, two bathrooms, attached garage and paved drive. Fast possession \$29,300

Country Homesites

Three acres, gently sloping, tree lines, a truly beautiful homesite \$8,900
Seven acres, wooded, surveyed, ready to build \$10,500
Twenty-two acres — Erin township, mostly wooded, surveyed and ready to build \$16,500
Heavily wooded, one acre lot, choice location, south of town \$12,900
Exceptional treed acre in a prestige country location \$13,900

Business and Investment Properties

GOING RETAIL BUSINESS — ALL FIXTURES AND EQUIPMENT GOOD LEASE, NEW STORE. Sacrifice \$6,900
GOOD COMMERCIAL LOCATION — 3 1/2 acres, entrances off No. 7 Hwy. and 22nd sideroad \$18,000
HIGHWAY COMMERCIAL CORNER — One mile from town — 250' x 250' — ideal service station, motel or retail site \$24,000

SMALL MANUFACTURING PLANT — Ideal for the enterprising person to start a business of his own. 4,600 sq.ft. including office, washrooms, wiring and heating. Call us today for further details. Would rent at \$400 month with option to buy. Now \$35,000

START THE BUSINESS OF YOUR CHOICE — Begin with a new store in a top central location. Ask us how.

FOUR PLEX — Going for just \$10,600 per suite. Gross annual rental \$6,840, statement in our office. Good downtown location \$42,500

INVESTORS' DREAM — 95 Strategically located acres with an income from the buildings and land of \$4,300 per year, located 2 miles south of town, Bargain price \$110,000

FOBERT
H. FOBERT REAL ESTATE LTD.
164 Guelph Street, Georgetown

877-5213
364-3719 TORONTO LINE

M L S
MULTIPLE LISTING SERVICE

After 8.30 p.m. call . . .

Bob Tripp: 877-5455 Ken DeRose: 877-3552
Helen Atkinson: 877-3333 Mary Rose Peters: 877-3948
Erma DeRose: 877-3552 Gary Thomas: 877-8888
Han Daiv: 877-6881