

Gymnasts Compete, Do Well in Invitational

Marilyn Serjeantson
 TWENTY-NINE girls from the Georgetown and district Y gymnastic classes headed for the 1971 North York Gymnastic Club Girls Invitational Competition on Saturday, March 27. The competition started at 8:30 a.m. and lasted until 5 p.m. 250 girls competed from about 10 clubs.

We are very proud of the effort and success that the Georgetowners achieved.

MOST OF OUR girls haven't the use of a gymnasium except for their one night a week class at the high school. This is the great advantage the girls from the established clubs have. They are able to practice their routines and use the equipment almost anytime they want.

Considering this and the fact that our classes have only been in existence since last fall, our girls did fantastically well. With more practice our girls could win. In fact this is the prediction of one proud parent.

ANNE-MARIE KRUDWIG their instructor is responsible



for their excellent training and tremendous enthusiasm. Each week Mrs. Krudwig is assisted by 6 Y Teen Leaders, Carol Lockwood, Sandy McBean, Janice Martin, Elizabeth Catling, Eva Katterwe and Leslie Katterwe.

The more I talked to the parents of our competitors the more I heard about the tremendous job Anne-Marie has been doing. We are so fortunate to have such competent instructors as Anne-Marie and Bernard Krudwig here in Georgetown.

ARGO DIVISION
 77 Competitors

Barbara Underhay, 1st with 8.4 mark for vault; Jennifer Lister 4th with 7.95 marks; Jennifer Lister, 6th balance beam, 4th floor routine.

NOVICE DIVISION
 Michelle Virgin, 6th floor routine; Jennifer Linton, Stephanie Lister, 5th balance beam; Michelle Virgin 6th balance beam.

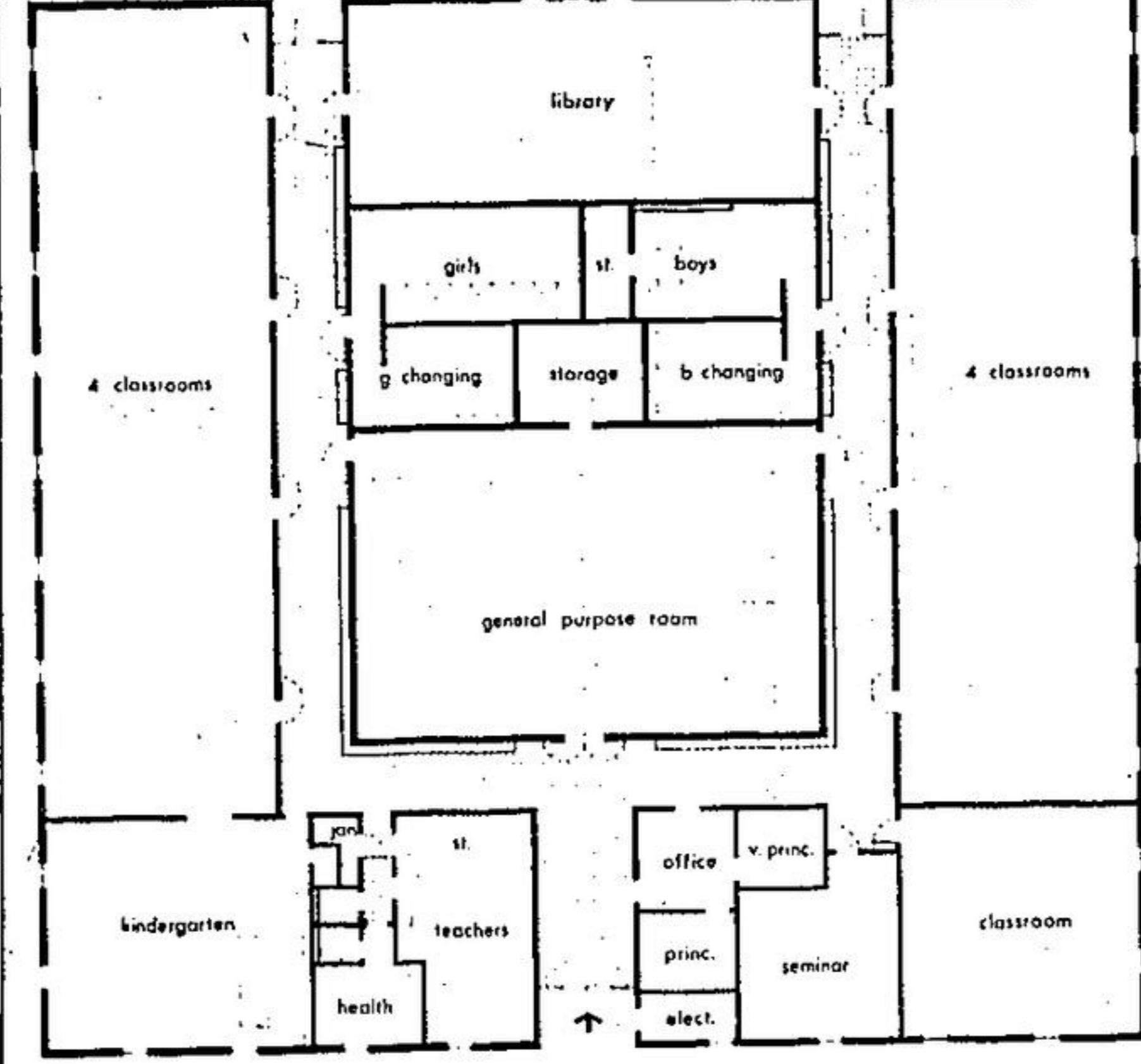
CADET DIVISION
 Girls Under 10
 Stacey Adams; Carey Worrall; Linda Ferguson; Marion Smith; Amanda Wakjet; Laura Gordon.

TYRO DIVISION
 Phillippa Wakjet; Jane-Anne Aggiss; Joy Middleton; Andrea Knoespel; Gail Currie; Kelly Ambridge; Brenda Ambridge.

ARGO DIVISION
 Girls Under 12
 Kendia Adams; Linda Wilde; Mona Knoespel; Sandra Smith; Linda Middleton; Megan Mills; Ruth Aggiss; Sabina Katterwe; Jennifer Lister; Catherine Smith; Barbara Underhay; Heather Clarke; Heather Bennett.

NOVICE DIVISION
 Leslie Catling; Stephanie Lister; Jennifer Linton; Michelle Virgin.

Expenditures Half Million Increase for R.C. Board



Floor plan of the St. Francis of Assisi School being built at Sinclair and Duncan in Georgetown.

Total expenditures for the Halton County Separate School Board for 1971 are estimated at \$4,831,600 compared to \$4,302,602 last year.

Largest item on the budget is instruction which amounts to \$3,022,403 up from the 1970 total of \$2,748,455.

The largest increase in the budget was for plant operation and maintenance, up \$108,383 from the 1970 total of \$370,014 to the 1971 estimate of \$478,397.

DEBENTURE CHARGES
 Two other main increases were debenture charges, up \$38,120 to \$84,775 from the 1970 total of \$75,455 and capital expenditure which amounted to \$38,230 for 1971. No capital costs were budgeted for last year as the board made cutbacks.

Two new schools, St. Patrick's and St. Dominic's were constructed and additions built for St. Gabriel's and Holy Cross schools.

Administration costs rose to \$157,815 from the 1970 total of \$183,962. Transportation amounted to \$219,000 compared to \$213,904 and tuition fees to other boards cost \$45,800 up from last year's \$43,208.

PROVINCIAL GRANTS
 Revenue from the provincial government amounts to \$4,014,168 or 83 per cent of the total 1971 budget.

Revenue from local taxation which makes up most of the balance of board funds amounts to \$805,434. Of this \$748,511 comes from municipal tax levy

and \$20,923 from use of the 1970 over levy on municipalities.

The board's over levy last year accounted for the \$100,000 surplus which the board has decided to hold in reserve except for the \$20,923. Revenue from other sources amounted to \$12,000 compared to \$17,070 last year.

The 1971 assessment support-

ing the board totalled \$40,878,322. Oakville provided 38 per cent or \$14,317,853, while Burlington provided 50 per cent or \$19,145,118.

Of the other Halton municipalities, Milton provided three per cent or \$1,317,853, Georgetown six per cent or \$2,569,687, Esquesing two per cent or \$737,785, Nassagaweya \$39,600.



These Georgetown Y gymnastics girls took part in the North York Gymnastic Club Girls Invitational Competition.

SILVERWOOD

Silverwood Women's Institute held their 20th anniversary party at Stewarttown on April 2, with a lively 23 tables of euchre players.

Mrs. T. Brownridge won the birthday prize, Miss Peggy Johnson the door prize and Miss Ethel Brownridge the average count prize.

Mrs. George Ironside and Wilfred Greenlee were winners in the women's and men's sections with low prizes to Mrs. Drouillard and Mrs. Harry Marchington.

Lunch of sandwiches, butter tarts, tea and coffee also included a birthday cake decorated in W. I. colours of blue and gold. It was cut by Mrs. Muriel Miller, first president and Mrs. Marchington who holds the office this year.

W. I. members from Ballinacree, Silverwood and Limehouse are holding classes on 'Accessories for the home' in the hall at Limehouse. Others are learning rug making.

— Alicia F. C. Scott

VARIGRAY

The lens that changes colour

Test the amazing VARIGRAY sun-sensitive lenses — they darken automatically in sunlight to relieve sun-strain, clear rapidly for normal use indoors and night time.

Make a point of seeing Varigray Photochromic Lenses today at

R. L. BARTON
 Dispensing Optician
 36 Main St. S.
 PHONE: 877-7223



New DATSUN 1200

it's loaded with no-extra-cost extras

- 93 MPH performance • up to 35 miles per gallon • disc brakes • flow-through ventilation • whitewalls • 2-speed heater/defroster • adjustable bucket seats • low maintenance costs

and it only costs \$1975.

NORTH END B.P.

DATSUN SALES & SERVICE

235 Base Line Road

Milton: 878-2471

IT'S JUST DOWN THE HILL

Fendley FLORISTS

FOR ALL YOUR GIFT & FLORAL NEEDS

MAIN ST.

HILL ST.

WE'RE HERE

Just a Few Steps East of Main St.

MAPLE NURSERY SCHOOL

A GOVERNMENT LICENSED
 CO-OPERATIVE
 NURSERY SCHOOL

1971-72 REGISTRATION

FOR INFORMATION CALL

MRS. KEOUGH: 877-5006

CAN IDB SERVE YOU?

One of our representatives

will be at

CHAMBER OF COMMERCE
 Oakville (Tel. 845-6615)

Wednesday, April 14th

If you require a term loan for a new or existing business, you are invited to discuss your needs with him. An appointment can be arranged by telephoning

idb INDUSTRIAL DEVELOPMENT BANK

TERM FINANCING FOR CANADIAN BUSINESSES
 20 Hughson St. South — Hamilton
 (Tel. 528-0471)

20 FOOT ALUMINUM EXTENSION LADDER

Spring-loaded steel
 telescopic
 automatic safety-lock
 No-slip rungs.
 Sure-grip rubber
 feet.

\$19.98

CATALOGUE SPECIAL

Spring is Here!
 AT...

MACKENZIE
 BUILDING SUPPLY CENTRE

WHITE ALUMINUM STORM DOOR

Now is the time to install your aluminum doors and save money at your Allont store.

\$29.95

CATALOGUE SPECIAL

STEEL STORAGE SHED FOR HOME OR COTTAGE

Made of heavy gauge steel • baked-on enamel finish • Simple to assemble • Ideal for storing garden tools, outdoor furniture, barbecues, lawn chairs, outboard motors, sporting goods, lawn mowers.

\$79.95

CATALOGUE SPECIAL

PICNIC TABLE

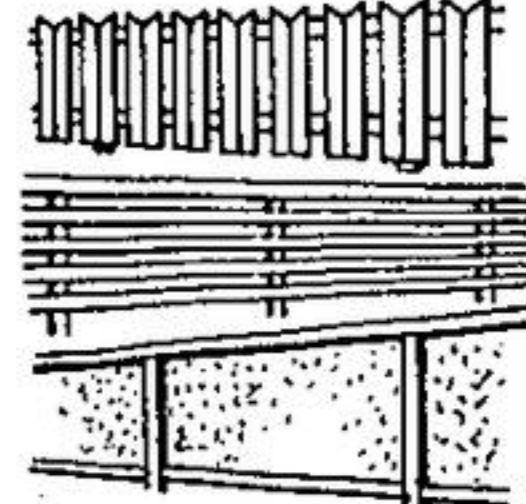
An Allont picnic table constructed from long-lasting Spruce or Western Cedar ready to be painted or stained the way you want. Six ft. in length.

\$29.95

ASSEMBLED

WOOD FENCING

We can provide you with the right style of fence for your every need. Choose from more than 17 fence designs.



Pre-finished "SONORA" PANELLING

Add new dimension to your walls with this richly finished deep embossed panelling. Wide V-groove adds rustic effect to random plank pattern and hides joints. Four gorgeous decorator shades. 4' x 8' sheet only

\$5.49

ECONOMICAL PVC PANELS

Colourful translucent panels are 8 ft. long and 20 in. wide. Choose from green, yellow, white or blue. 8' x 20"

\$1.99 EACH

"EXCELITE" FIBER GLASS PANELS

Beautiful fiber glass panels to separate, decorate, divide, cover, enclose. Use ordinary hand tools. 8 modern colours to choose from. 4 oz. weight. 26" x 8'

\$7.95

THE 1971 ALLONT CATALOGUE AVAILABLE SOON... WATCH FOR IT!



MACKENZIE

J. B. MACKENZIE & SON LTD.

BUILDING SUPPLY CENTRE

REVISED STORE HOURS

Mon. - Wed. 8 a.m. - 6 p.m.
 Thurs. - Fri. 8 a.m. - 9 p.m.
 Saturday 8 a.m. - 5 p.m.

Budget Terms Available

8 JAMES STREET
 TEL. 877-2207
 Free Delivery