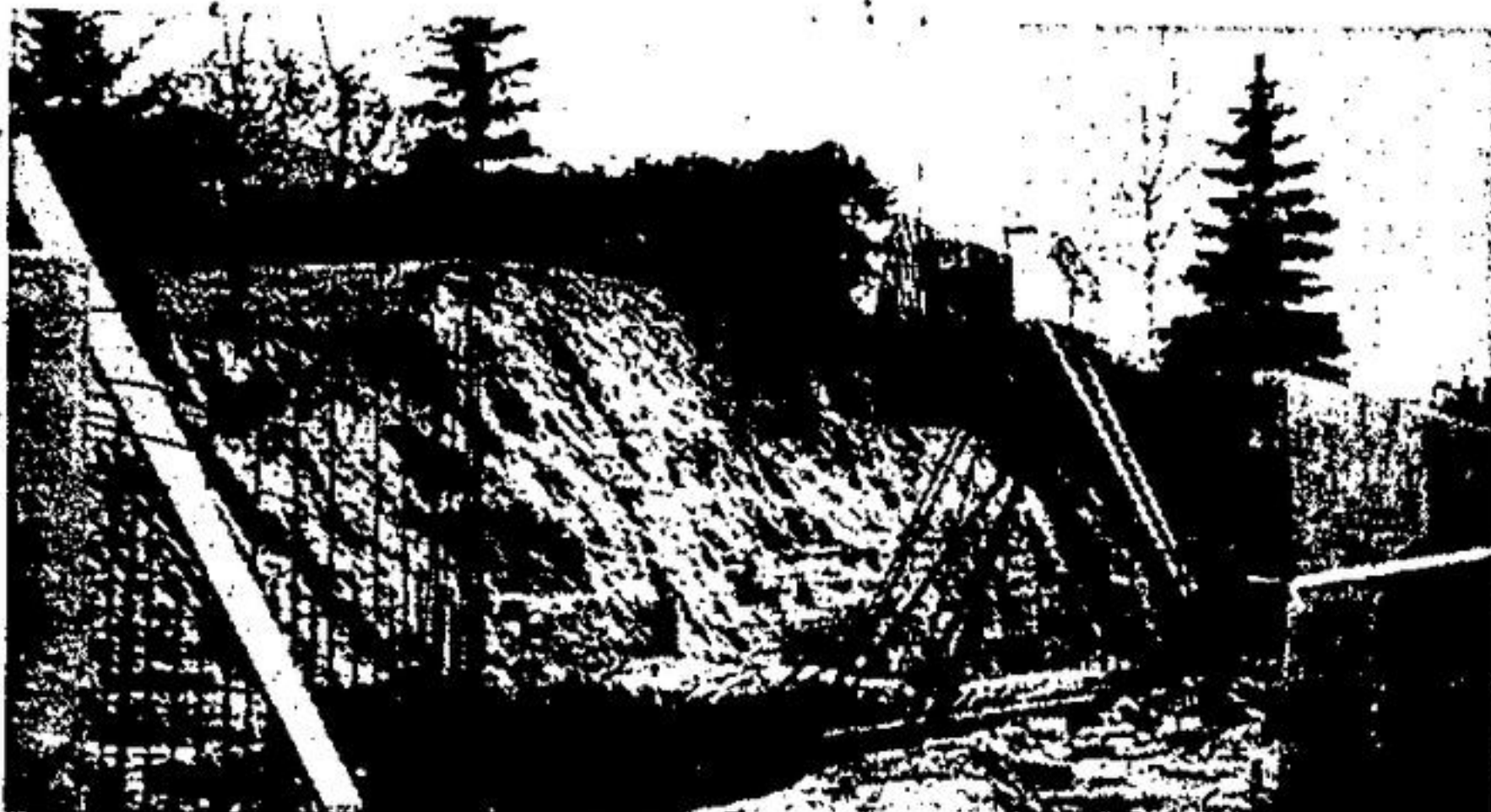
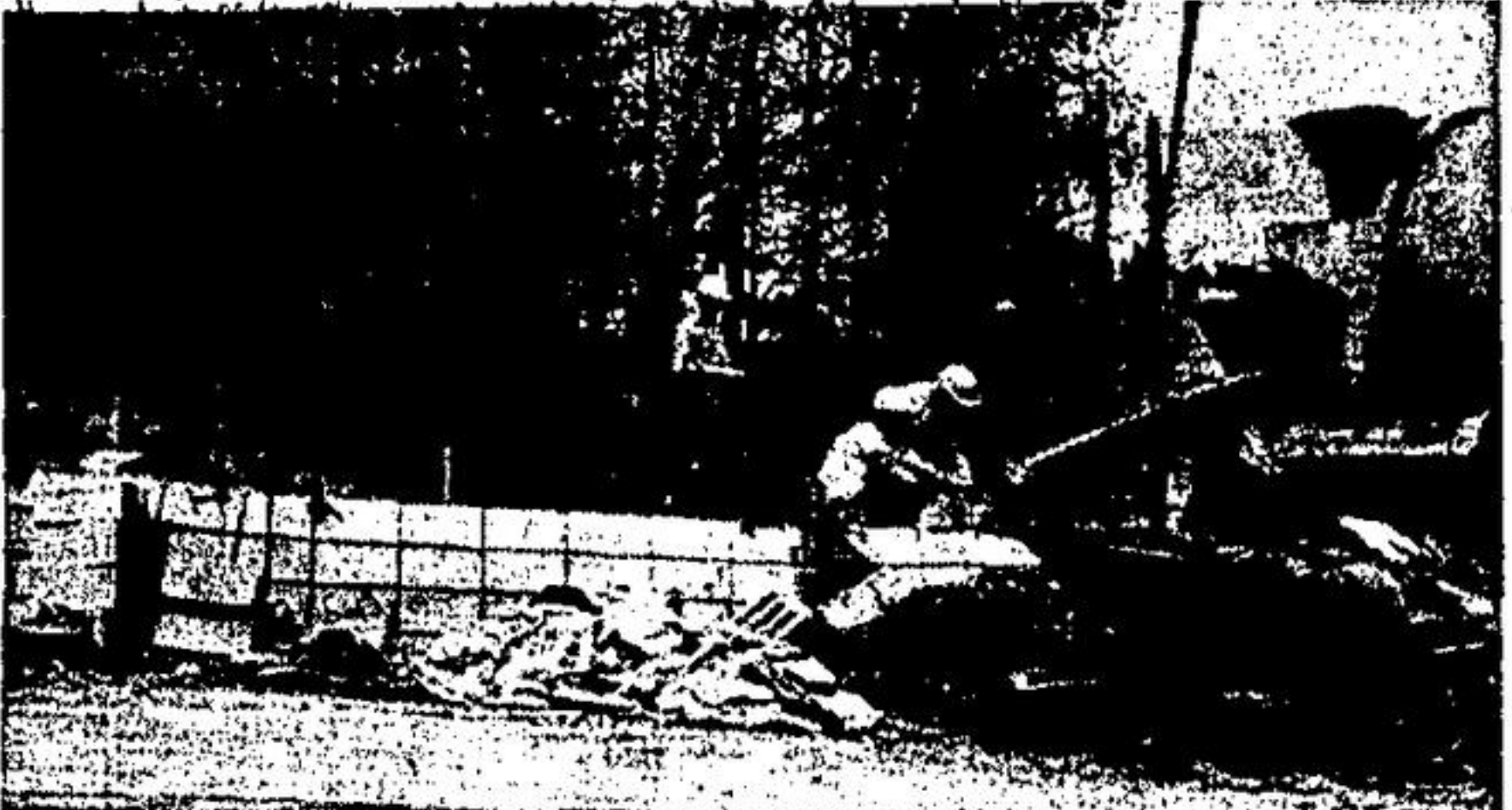


MESS, BEAUTIFUL BY AUGUST

Adding Extra Lane for Maple Ave. Hill Traffic



What used to be a lush grassy slope becomes a sheer cliff at the Maple-Market corner.



A cement block canyon is under construction along Maple Avenue between Main and Edith Streets.



Half a lawn and mature cedar hedge bowed to progress from in front of this house at the corner of Edith Street and Maple Avenue.

By the beginning of August the chaos on Maple Ave. West should be transformed into a finished two lane road, with an extra lane for slow moving traffic up the hill from Main to Edith Street.

In addition there will be extra width for turning at some intersections. The deep cuts now showing will take the dips out of the hill and allow for sidewalks, on the south side at a later date. A sidewalk on the north side will be included in the road project.

The retaining walls, which have puzzled many sidewalk superintendents, have prevented going into private property any further than necessary. Without them the slope would have been long and gradual with the result disappearance of many lawns.

TRIED SAVE TREES
"We tried to save as many trees as possible," said town engineer Gord Fancy, "but some had to come down as we were cutting into their roots." The town will pay \$155,000 as their share of the \$335,000 project. Both the county and the Department of Highways share in the total cost. The work is being done by contractor John Cucek.

Agriculture, Recreation For This Part of Halton

The report on the Government of Ontario's design for development (Toronto - Central Region) has this to say about the Commutershed (Zone 2) which includes Georgetown.

"Our policy for the commutershed is to retain it to the maximum degree in recreational, agricultural and other open space uses. It is expected that by the year 2000, the percentage of population living in this Zone will be four percent, somewhat less than 4.5 percent percentage. In actual numbers we expect 300,000 people in this Zone by the year 2000.

"The high cost of providing sewer and water services through this Zone is an important consideration in the decision to reserve it largely for non-urban uses. Such intensive growth therefore should be directed into the lakeshore areas or the peripheral urbanized areas.

"The growth which does take place in Zone 2 will be encouraged into (1) the vicinity of an urban axis which is expected to begin in Zone 1 with Richmond Hill and include Aurora, Newmarket and to a very small degree Bradford. (2) Such communities as Orangeville, Bolton, Acton, Georgetown, Milton, Uxbridge, Port Perry and Stouffville.

"Special care must be taken that the northward access does not predominate as an alternative to growth in the eastern segment of Zone 1. Continuous strip development along this

axis must be prevented by proper planning and by retention of non-urban land between the communities."

"Finally it is important to remember that the full-scale development beyond the Lake Ontario watershed will require the pumping of treated sewage effluent back into Lake Ontario to minimize the pollution dangers to Lake Simcoe.

U.S. Defence Contract Awarded to Varian

Government contracts totaling \$81,000 for electronic supplies have been awarded Varian Associates of Canada, Ltd., 45 River Drive, Georgetown by the Defense Supply Agency's Defense Electronics Supply Center in Dayton, Ohio.

The contracts call for 88 electron tubes to be manufactured in accordance with Varian specifications at their plant here. The Canadian Commercial Corporation, Operations Division, Ottawa, is the coordinator for all Canadian contracts.

This is a fixed price supply type contract awarded after formal advertising and/or competitive negotiations.

The Defense Electronics Supply Center procures, manages and supplies common parts of electronic equipment used by the armed services and various government agencies.

Elementary Teachers, Board Stalled on Salary Talks

Wage talks between Halton elementary teachers and the board of education negotiating teams have deadlocked.

The teachers and board committees said Monday that they are "at a temporary standstill while the respective committees receive further direction from their parent bodies."

ASKED TO RATIFY

John Lenz of Georgetown chairman of the teacher's group, said teachers would be asked to ratify the decision of its committee to turn down the board's latest offer. No new meetings have been scheduled with the board committee.

The board's latest offer calls for individual increases ranging from 3.4 per cent to 13 per cent. The net effect of the offer is to increase by nine per cent the board's salary budget for elementary school teachers. The demands of the teachers were not revealed.

MAXIMUM INCREASED

The board has offered a \$300 increase to \$5,500 from \$5,200 in the minimum salary offered to a beginning teacher. The maximum salary in this range has been increased to \$7,100 from \$6,800.

Similar increases in the minimum and maximum salaries have been offered in level two and three. The ranges for teachers in those categories during 1969 were \$5,600-\$8,400 and \$6,000-\$10,000 respectively.

OTHER OFFERS

In categories four, five, six

and seven, which correspond to the four salary levels for high school teachers, the board has offered \$400 increase for the minimum and maximum salaries in each category. The 1969 salary ranges were \$6,800-\$11,200; \$7,100-\$11,900; \$7,900-\$13,500; and \$8,400-\$14,400 respectively.

Festival Music Winners Appeared In Recital

The first place winners of the North Halton Music Festival took part in a concert at Milton high school Thursday before a crowd of one thousand. In addition to the Festival winners, entertainment was provided by a recorder group from W. I. Dick School in Milton, an instrumental group from J. M. Denyes, Milton, piano solos by Susan Showmaker and Debbie Bousfield from Robert Little School, Acton, accordion duets by twins Cindy and Sandy Higgins, of Martin Street School, Milton, songs by Bonnie Hills and Keith Sims, accompanied by Christine Penrice on piano, all from Martin Street School.

Park School in Georgetown contributed their Grade 3 choir, and Grade 5 and 6 triple trio to the evening's entertainment.

Chairman for the evening was Ralph McKeown, vice president of the North Halton Music Festival Association, and also principal of Limehouse school.

Why Buy a **MAYTAG** Automatic Washer
Ask Anyone Who Owns One
FULL SELECTION OF
THE MAYTAG LINE
SEE ALSO, MAYTAG
DISHWASHERS IN OUR LAUNDRY DEPARTMENT
WIGO TV & APPLIANCES
32 Main St. N., Georgetown 877-3376

Is This What The People Want?

The Halton County Board of Education believes that it must retain the right to manage its schools. There seems to be a body of secondary school teacher opinion that thinks otherwise. Much has been said about the teachers' right to negotiate working conditions.

What does this mean?

It means that if the following items from the O.S.S.T.F. Salary Brief were implemented in our secondary schools, the increased costs to the taxpayer are estimated as follows:

- 13 audio visual Technicians \$ 90,000.00
 - Class-size: If the pupil ratio in Halton were reduced from 18.51 to 16.51, the increased instructional costs would be \$ 1,000,000.00
 - Education Leave
The Board has allocated ¼ of 1% of the Instructional Salary Budget for Educational Development and Leave. Halton Division, O.S.S.T.F. has asked for 1% of the Instructional Salary Budget or an increase of \$ 25,000.00
 - President
Halton Division, O.S.S.T.F. requests that the President of Halton Division be released from his teaching duties during the year of office and that his salaries and benefits be paid by the Board \$ 11,000.00
 - Professional Development
Halton Division, O.S.S.T.F. asks for an increase from ¼ to ½ of 1% of the Instructional Salary budget for professional development or an increase of \$ 25,000.00
 - Teacher - Secretarial Ratio
Halton Division, O.S.S.T.F. states that the existing secretarial ratio does not work and that the size of the secretarial staff should be established by the principal in consultation with his staff. If one secretary were added to each secondary school, the increased cost would be \$ 65,000.00
 - Summer and Night School Allowance
Halton Division, O.S.S.T.F. asks for a payment of \$12 per hour for teaching night school or summer school. This amounts to a 20% increase or \$ 25,000.00
- Total \$ 1,241,000.00

No discussion has yet taken place on salary items.

Is this what the people want?

The Halton County Board of Education does not believe that this is what the people want. This Board has not and will not negotiate working conditions. This Board has been elected to manage the educational enterprise in the interests of the people both educationally and financially.

THE HALTON COUNTY BOARD OF EDUCATION

Close-Out Specials

WE ARE CLOSING OUR GARDEN CENTRE

SMALL, POTTED

Evergreens

15" TO 18" SIZE SPECIAL \$1.75 EACH

5 for \$7.50

T-Mulch TO CLEAR

50% OFF

PLEASE NOTE:

Our Nursery Will Continue Specializing In Herbaceous and Tree Peonies - Iris - Day Lillies

WYNFIELD NURSERY & GARDEN CENTRE

Half Mile West of 7th Line on 17 Sideroad - Phone 877-9952
HOURS: Open 9 a.m. to 6 p.m. Week-ends

Shopper's Discount May Sale

At The Former

Jackson's Ladies' Wear

28 MAIN STREET NORTH UPSTAIRS

ONE HOUR SPECIAL

FRIDAY, MAY 15th - 10 a.m. to 11 a.m.

FLASH CAMERA - complete with flash attachment - will take 16 pictures, color or black and white with 120 film. Ideal for summer vacations. Comp. value \$5.00 - **99c** 1 Hour Special

ONE HOUR SPECIAL

SATURDAY, MAY 16 - 10 a.m. to 11 a.m.

MIRACLE KNIFE - As seen on TV - Cuts thru bones, or frozen foods, for carving, for scaling fish - Ideal for summer vacations. Comp. value \$2.98 - **57c** 1 Hour Special

BABY'S SLEEPERS

One piece cover-all with feet in - nylon and terry, two-way stretch trade name 'Creep and Sleep'. Sizes S, M, L, pink, blue and yellow - Comp. value \$2.98 - **OUR PRICE \$1.47**

MEN'S BRIEFS, TOPS & T-SHIRTS

White only, cotton knit, Canadian made.

Comp. value \$1.00 ea. YOUR CHOICE **38c**

LADIES' COATS

The new 'Wet Look', new length, some maxis - double and single breasted - colors Grey, Navy and Red - Sizes 7 to 13. This you shouldn't miss - Comp. value \$29.95 - **YOURS FOR ONLY \$12.88**

WRIST WATCHES

Ladies' 17 Jewel silver and gold color with expansion bracelet - Swiss made - 1 year warranty - Comp. val. \$24.95. **OUR PRICE \$8.88**

Men's Gold color and mesh band - very dressy - also divers watches - Comp. val. \$24.95. **Our Price \$8.88**

BADMINTON SET

Two-player set complete with Birdie, net and Racquet and carrying case - Comp. value \$2.98 - **OUR PRICE \$1.66**

BABY'S ROMPERS

Two-way stretch, fits all babies up to 20 lbs. - Snap button crotch - Colours Blue, Pink, Yellow - Comp. Val. \$1.98 - **OUR LOW PRICE \$88c** They Won't Last Long At This Price!

BATTERIES 'D' & 'C' Size

Heavy duty, high power, dry cell, good for flashlights, toys, transistors, radios, tapes recorders - Comp. val. 29c. Priced to go. **YOUR CHOICE 12c**

STORM LIGHTERS

Flip top - good for Pipes and Cigarettes -

Comp. value \$1.00 each - **OUR PRICE 38c**

STEAK KNIVES

Hollow ground, stainless steel, bone type handle. Comp. val. \$2. **88c**

HARMONICAS - Real beauty - 48 Reed **88c** Comp. value \$2.50 - Our Price

MEN'S DRESS SOCK

Nylon, cushion sole and work sock **48c** Comp. value \$1.50. Our price

BOYS' PERMA PRESS SPORT SHIRTS - Sizes 8 to 16 yrs., assorted colors **\$1.88** Comp. value \$3.98. Our Price

LADIES' PARTY HOSE

1 size fits all, ass'd. colors - First Quality **76c** Comp. val. \$2.00 - Our Price

LADIES' DUSTERS & HOUSE DRESSES - **\$1.88** Comp. value \$3.98 - Our Price

TEA TOWELS

Linen and cotton, colorful striped pattern. - Good size - **25c** Comp. val. 69c - Our price

SUN GLASSES - Men's & Ladies. Reg. & Clip-Ons **88c** Comp. value \$2.00 - Our Price

CHILDREN'S SHORTS

Nylon stretch, colors, orange, blue, red; sizes 2T to 6x **88c** Comp. val. \$1.75 - Our Price

CHILDREN'S 2-PC. VINYL SKIRT & VEST SETS 3 to 6x **\$2.49** Comp. val. \$5.95 - Our Price

MEN'S PERMA PRESS DRESS AND SPORT SHIRT

Sizes 14 1/2 to 17 **\$1.88** Comp. value \$3.98 - Our Price

LADIES TANK TOPS - Nylon - s, m, lge. ass'd. colors - **\$1.49** Comp. val. \$2.49 - Our price

BOYS' DENIM JEANS

Sizes 7 to 16 years - **\$1.88** Comp. value \$3.98 - Our Price

BED SHEETS - Single size, white only - **\$1.39** Comp. value \$2.49 - Our Price

TRANSISTOR BATTERIES

Heavy duty - long life. 9 volt. Comp. value \$1.90 - **2 for 57c** Our Price

3 PC. ALUMINUM POT SET OR FRY PAN SET For campers or household use - **\$1.38** Comp. value \$2.98 - Our Price

MR. BUBBLE

Bubble Kids Clean - **48c** Comp. value 59c - Our Price

WILKINSON SWORD BLADES - Pkg. of 5 - **33c** Comp. val. 57c - Our Price

HALO SHAMPOO

Comp. val. 79c - Our Price **38c**

GARBAGE BAGS - Outdoor type, pkg. of ten - **33c** Comp. value 69c - Our Price

CHARGEX AVAILABLE