

SOLD
THE SIGN OF PERFORMANCE

**247 Guelph St.
Georgetown**

877-5165



Betty Stokes with this week's mortgage rates. The mortgage rates quoted below are prime rates and are available to qualified customers on top quality homes in good locations.

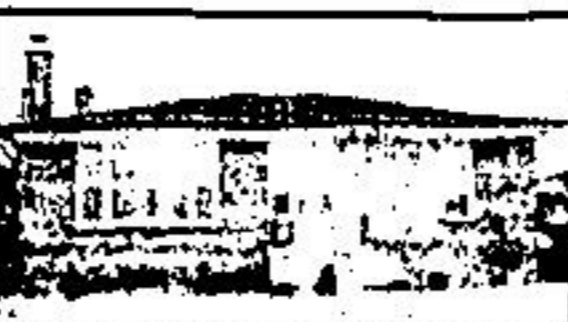
Term 1 yr. 2 yr. 3 yr. 4 yr. 5 yr.
Rate 13% 14 14% 14% 14%



ON SCENIC ROUTE, 4 bdrms., 2 bdrms., 2 fp's, grills, sauna, 2 car garage. Listed \$184,500. Call Ron Lacey. 84-451



NO NEED FOR HWY. TRAVEL! TNA 3 bdrm. rsl. bung. has the river going by. 100' x 350', mature trees, dbl. car gar., brick fp w/o to garden, call Cathy Parego. 84-425



ONLY \$73,900 3 BDRM. WITH FINISHED P.L.R. with stone fp., some appl. good location, close to all amenities. Call Ev Patterson. 84-387



SAVE-DON'T PAY RENT \$69,900 11% Mtg. assumable, 3 br. townhome, with garage shows well. Call Ev Patterson. 84-423



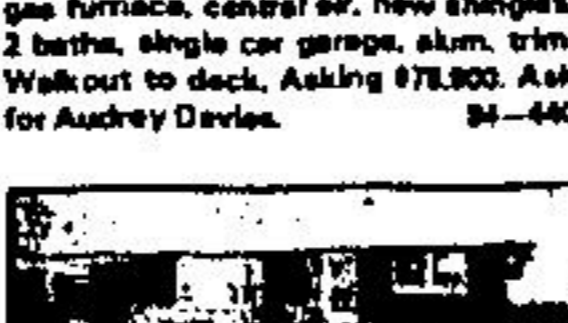
ONLY \$68,999 Immaculate 3 br., att. garage, walkout from dr. choice location for commuters, in med. poss. Call Ev Patterson. 84-423



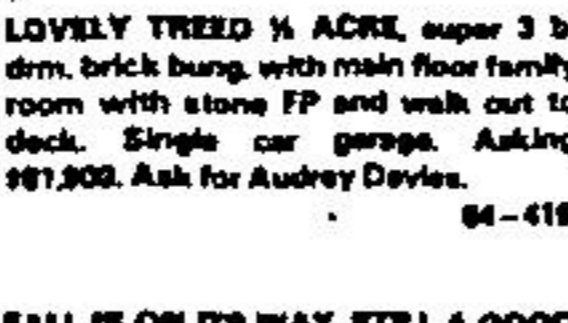
19 ACRES \$175,000. Call Marg Parker. 84-29



SOLID 3 BDRM. BRICK BUNG. features updated kitchen, bath, new gas furnace, central air, new shingles, 2 baths, single car garage, alum. trim. Walkout to deck. Asking \$78,900. Ask for Audrey Davies. 84-440



LOVELY TREED 1/2 ACRE, super 3 bdrm, brick bung. with main floor family room with stone FP and walk out to deck. Single car garage. Asking \$87,900. Ask for Audrey Davies. 84-418



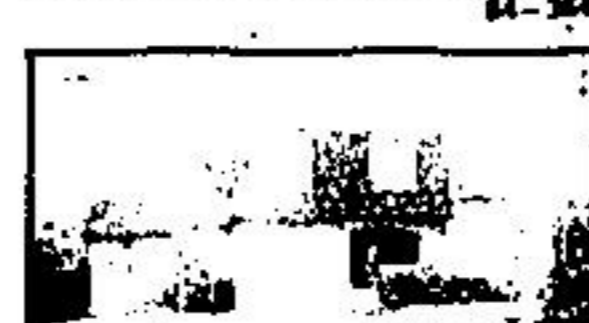
FALL IN ON ITS WAY, STEEL A GOOD TIME TO BUILD! Building lot 2.1 acres for \$28,900. Huge trees at entrance of property, driveway in, permit available so hurry before fall comes! Give me a call. Vendor anxious. Call Ursula Zeldner. 83-181



YOU BE THE JUDGE! "The Maples" Farm! 87 acs., and farm bldgs., hardwood bush, Victorian brick, winterer hall plan, 8 bdrms. Has charm, needs some updating. Painted barn. Nice setting in maples. N. of Hillsburgh. Call Harry Burt. 84-408



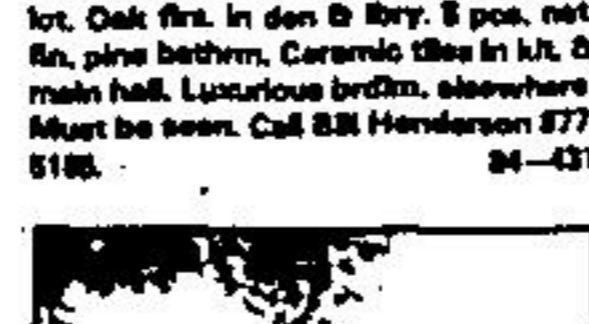
GEORGETOWN ACREAGE, 3 bdrm. w/income apartment, Barn, paddock, pond & pool 5 mins. from town. Call Brenda Payton. \$134,900. 84-364



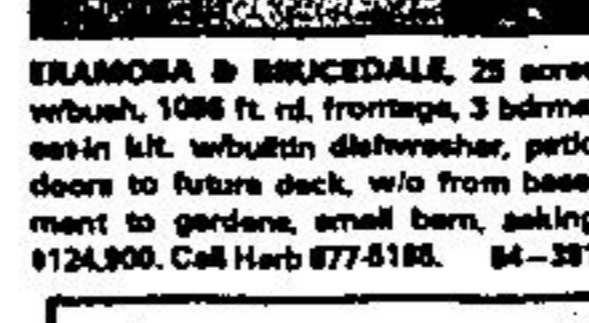
EXCEPTIONAL-2 RM. HOME, wall to wall fireplace in charming grd. fl. fam. rm., walkout from sun rm., hrdwd. fire. & much more. Must be seen. Call Bill Henderson 877-8188. 84-436



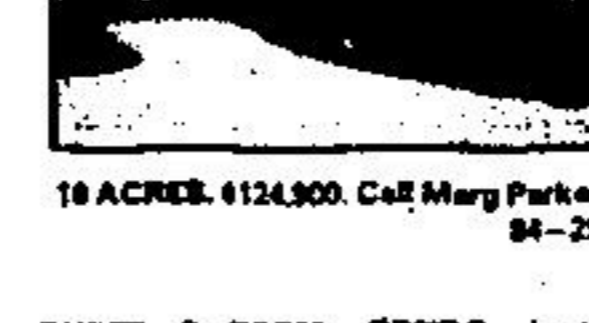
BEAUTIFULLY RENOVATED 3 bedroom older home, on large 44' x 220' lot. Oak flrs. in den & bry. 5 pos. net. lin. pine bathrm, Ceramic tiles in kit. & main hall. Luxurious brodm. elsewhere. Must be seen. Call Bill Henderson 877-8188. 84-431



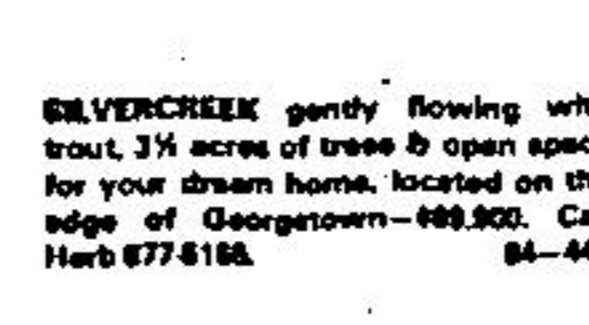
TRAMORA & BRUCEDALE, 25 acres w/bush, 1086 ft. rd. frontage, 3 bdrms. w/in kit. w/built-in dishwasher, petto doors to future deck, w/o from basement to gardens, small barn, asking \$124,900. Call Herb 877-8188. 84-381



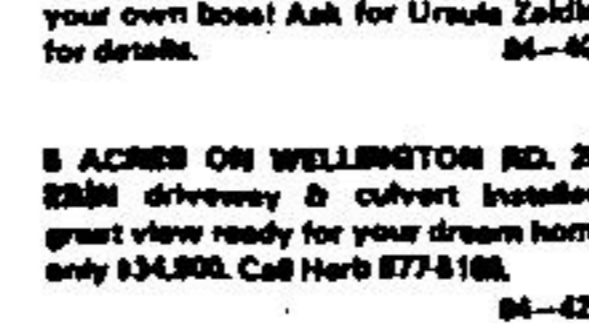
18 ACRES \$124,900. Call Marg Parker. 84-291



SUPER 3 BDRM. CONDO. Large rooms, 2 baths, all facilities including pool, U/O parking lot for 2 cars just mins. south of town. Asking \$61,900. Ask for Audrey Davies. 84-368



SILVERCREEK gently flowing with trout, 3 1/2 acres of trees & open space for your dream home, located on the edge of Georgetown—\$89,900. Call Herb 877-8188. 84-447



5 ACRES ON WELLINGTON RD. 26, 2200 driveway & culvert installed, great view ready for your dream home only \$34,900. Call Herb 877-8188. 84-426



NEW—\$118,999 YOU'LL LOVE THIS COUNTRY SOLARE—dble. garage, quiet cres. private access to ravine, M.F. FR. with F.P., 4 br. Call Ev Patterson. 84-426



\$78,999 WELL KEPT 3 BDRM. DETACHED HOME ON PRIVATE LOT. Lehigh k. dr. eat-in kitchen, finished basement, extra bath. Talk to Alice Pokkuda. 84-434



CLASSIC LOOK, Country acre wooded priv., lng. pool, 4 bdrms., 2 fp. 2 mins. to Trafalgar, country kit. Asking \$181,500. Call Cathy Parego. 84-398



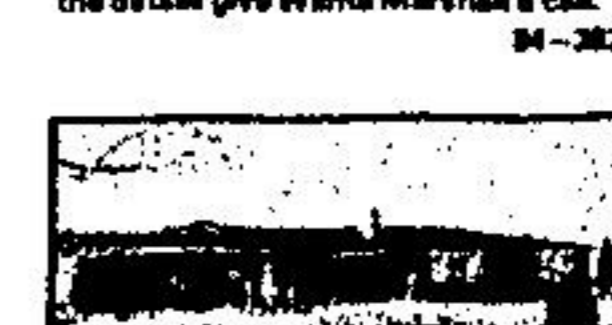
REDUCED \$78,900. Move in condition steel decor, 3 bdrm, br. rms rm fp west br. 3 pos. den & laundry rm. Call Cathy Parego. 84-428



HALTON HILLS HORSE LOVERS DREAM 10 acres, 8 stall barn, rubber fencing, newer home. For details call Diane Arnold 877-8188. 84-401



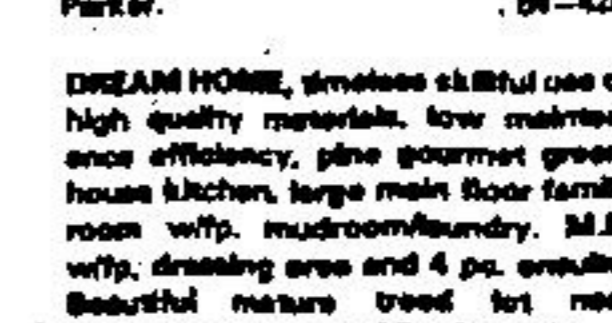
JUST STARTING OUT? This br. bung. is ideal. Listed at only \$68,900, also features a 1 bdrm. in-law suite. For all the details give Wilma Marshall a call. 84-382



98 ACRES \$125,999. Call Marg Parker. 84-320



EXCLUDED 1/2 ACRE NEAR TOWN, 5 bdrms., main fl. fam. rm., welcoming kitchen w/stone fp. & walkout, main fl. laundry. Only \$119,900. Call Marg Parker. 84-428



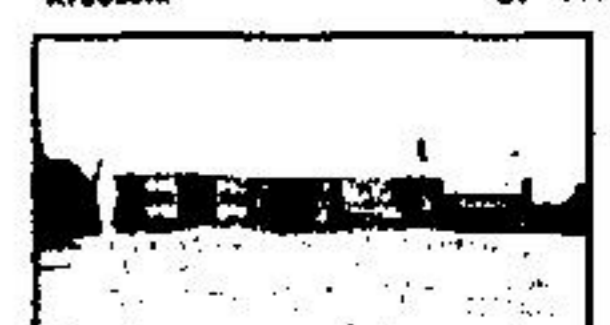
DREAM HOME, timeless careful use of high quality materials, low maintenance efficiency, pine gourmet green-house kitchen, large main floor family room w/tp. mudroom/laundry. M.S. w/tp. dressing area and 4 pc. ensuite. Beautiful mature tree lot near Georgetown. Talk to Alice Pokkuda. 84-412



17 ACRE FARM. Light beam, close to Georgetown, 11 rms., house, 2 ponds, lrg. bank barn, 75 acres planted, 3 acres hrdwd. bush. Must be seen. Call Bill Henderson 877-8188. 84-432



COOL IN SUMMER, WARM IN WINTER. Air con. & heat pump. Inspect this beautiful 4 bedroom home. Only min. from Georgetown. Call John Kroezen. 84-444



LARGE KITCHEN WITH BL. APP. Large dining rm. & living rm. with f.p. 125' x 250' lot nicely landscaped close to town. Only \$129,900. Call John. 84-448



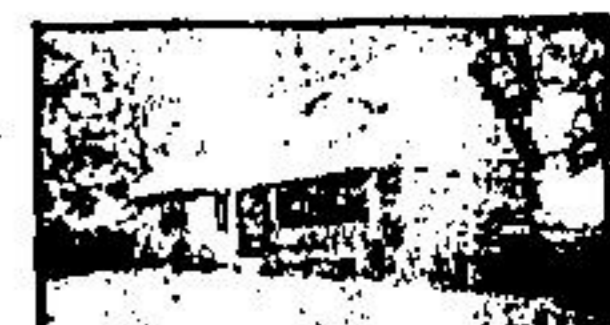
BUILD YOUR DREAM HOME, overlooking Credit River, at the Forks, Caladen, hydro, building permit, driveway, all yours for only \$38,900. Vendor moved. Call Herb 877-8188. 84-374



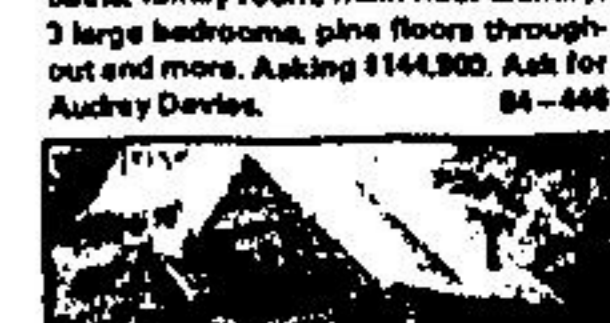
CLOSE TO SHOPPING This 3 bdrm. and unit is super sharp. Very private backyard with interlocking br. patio. A must to see. Call Wilma Marshall. 84-445



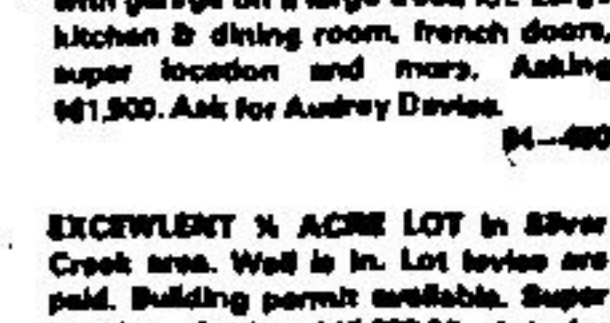
5 1/2 ACRES \$118,900. Call Marg Parker. 84-366



1/2 ACRE—BELMOUNTAIN Unique log home features large rooms, 2 fp's., 2 baths, family room, main floor laundry, 3 large bedrooms, pine floors throughout and more. Asking \$144,900. Ask for Audrey Davies. 84-446



GLEN WILLIAMS solid 3 bdrm. home with garage on a large treed lot. Large kitchen & dining room, french doors, super location and more. Asking \$61,900. Ask for Audrey Davies. 84-480



EXCELLENT 1/2 ACRE LOT in Silver Creek area. Well in in. Lot levies are paid. Building permit available. Super location. Asking \$46,000.00. Ask for Audrey Davies. 84-371

Nancy Keltner 877-4422 Cathy Parego 877-8438 Bill Henderson 877-8638 Ursula Zeldner 877-8388 Betty Stokes 877-4882
John Kroezen 877-3728 Wilma Marshall 877-8188 Harry Burt 878-855-4678 Marg Parker 819-833-8151 Alice Pokkuda 877-8345
Diane Arnold 877-8188 Chris Fisher 877-8334 Audrey Davies 877-8374 Herb Spitzer 877-8666 Brenda Payton 877-7876
Ron Lacey 877-8884 Ex Patterson 877-8984 Dave French, Mgr. 867-8787