

SOLD
THE SIGN OF PERFORMANCE

247 Guelph St.
Georgetown

877-5165



Wilma Marshall with this week's mortgage rates. The mortgage rates quoted below are prime rates and are available to qualified customers on top quality homes in good locations.

Term 1 yr. 2 yr. 3 yr. 4 yr. 5 yr.
Rate 12% 13% 14% 14% 14%

**THIS WEEK'S
AFFORDABLE
HOMES**



LIGHT INDUSTRIAL ZONING—Large workshop, lovely S/S on a 1 acre lot in Limehouse, 2 baths, 2 walkouts, F.P. in family rm. All brick and alum. home. Asking \$129,900. Ask for Audrey Davies. 84-300



CUSTOM HOME TO BE BUILT on a 1/2 acre lot in Silvercreek area. Brick and alum. main floor F.R. and W.O. Top quality builder. Asking \$152,000. Ask for Audrey Davies. 84-371



COMFORT OF LOG. Warm in winter, cool in summer. Economical to heat & maintain. 3 bdrm., w/o to future solarium. Secluded. Details from Marg Parker. 84-286



TO BE BUILT ON 24 ACRES—Overlooking 2 ponds, 3 miles from Georgetown. For more information call Herb Spitzer. Full price \$248,900. 84-327



GRACIOUS GEORGIAN "REDUCED" Private 1 acre just 2 min. to town. Large living and dining rooms with view of woods and pool, 2 F.P., 4 bedrooms. A "MUST TO SEE". Call Cathy. 84-398



SOLID BRICK BUNGALOW, lge. deck, d/w, b/w wood stove in rec rm, extra bdrm downstairs. Paved drive, fenced yard. Call John. 84-379



EXCLUSIVE LISTING. You'll love this 4 bdrm., well maint. and und. New broadloom, cozy shutters, 2 pc. ensuite. Call Marg Parker. 84-335



BOYS BEAUTY. Reduced \$82,500. Sharp 3 bdr. raised bung. in great location farm, rm. w/fireplace, w/o from dining rm to deck. Call Brenda Payton. 84-326



LOVELY TREED LOT. Lovely 3 bdr. brick bung. with carport. Rec room with fireplace. Great location and more. Reduced to \$77,900. Ask for Audrey Davies. 84-357



CUTE AS A BUTTON & only \$59,900. This brick bung. features a 1 bdrm. in-law suite, close to schools & shopping. Call Wilma Marshall. 84-382



38 ACRE FARM. New log home, open concept interior, kit. features brick cupboards, truly a unique design. \$189,000. Call Harry Burt. 84-400



ORIGINAL THREE. Lovely home in excellent condition inside and out. Large updated kitchen, with w/o to deck. Wood floors. Asking \$74,800. Ask for Audrey Davies. 84-373



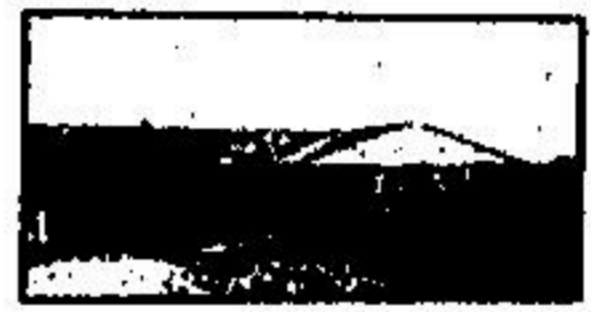
REDUCED \$178,000. Super sharp farm home w/a large rooms and very private yard. Fireplace in fam. rm., 2 baths. Call Brenda Payton. 84-363



REDUCED \$82,800. Sharp 3 bdr. on 1/2 large lot, in-law suite in basement, cent. air in great location, new kit. Call Brenda Payton. 84-381



REDUCED TO \$87,800. Super location lovely 3 bdr. brick bung. Alum. trim, new roof, near schools and shopping. Ask for Audrey Davies. 84-396



BRUCEDALE @ 24 HWY. 25 Acre Mini Farm 1006 ft. frontage, 3 acres bush, 3 bdrm. set-in kitchen, w/o basement. Immediate poss. Asking \$124,900. Call Herb Spitzer. 84-391



SO NICE TO COME HOME TO. Tree shaded 1/2 ac. in Terra Cotta, 1/2 g pool, 3 bdrm. bung., many extras. \$84,800. Call Marg Parker. 84-325



OVERLOOKING CREDIT West of No. 10 Hwy. Belfountain, Lot 80 x 146, small cabin, well, hydro, building permit. \$49,900. Call Herb Spitzer. 84-374



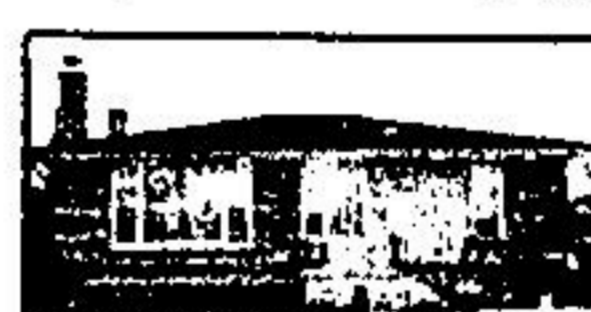
BEST BUY. Hobby farm, 3 bdrm. Bung., spacious living & dining, big country kitchen, mn. fl. fam. rm., F.P. W/O's, heated gar. Barn, pool. Only \$118,900. Call Marg Parker. 84-366



NEW LISTING. Lovely 4 bdr. brick and alum. home. Large sep. dining room with pocket doors. Original trim. New kitchen and bath. New furnace. Wiring, plumbing, broadloom and more. Asking \$87,900. Ask for Audrey Davies. 84-410



NEW LISTING. Very nice 3 bdrm home, walkout to patio. Finished rec rm. Asking \$58,500. Ask Audrey Davies. 84-386



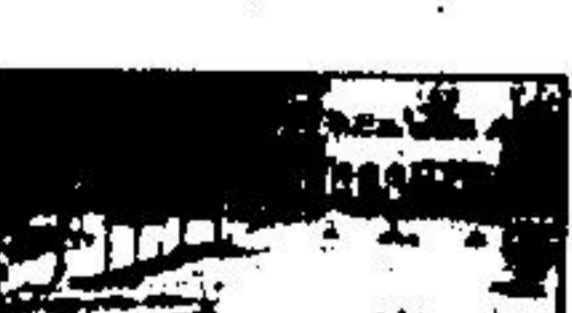
REDUCED \$87,800. Many extras here. Stone F.P. and knotty pine B.R. Large fenced yard, 3 br. close to all amenities. Call Ev Patterson. 84-387



SPACIOUS OLDER HOME IN VILLAGE SETTING. Modern kit. incl. D.W., stove and fridge, mn. fl. fam. rm. and laundry. Asking \$76,900. Call Sharon Pinkney. 84-333



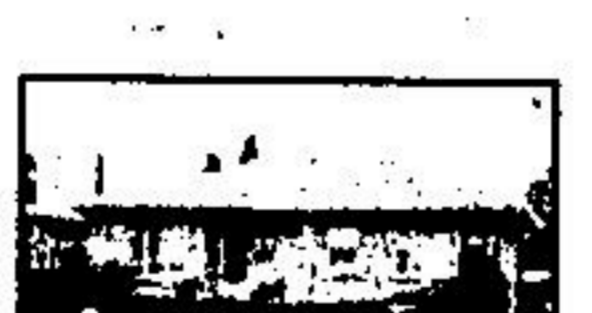
REDUCED \$87,800—Patio at appl. Drapes and rug, central air, F.P. 2-4 pc. bath and more. Call Ev Patterson. 84-288



OPEN HOUSE JUNE 24th, 2-4 HWY. 800. 7 1/2 mile past Silvercreek Shd., 3 bdr. home, 3 plus acres, barn, pond, pool. \$138,000. Call Brenda Payton. 84-364



"THE MAPLES" FARM—87 acs., farm bldgs., hardwood bush, Victorian brick home w/center hall plan, 5 bdrms., has charm—needs updating. Painted h/roof barn. Call Harry Burt. 84-406



LARGE LOT. Sep. din. rm., 3 lge. bdrms. rec rm., paved drive, solid brick bung. ASK for only \$78,500. Call John. 84-380



IMPRESSIVE 88 AC. EST. Brick gateposts adorn entrance, dbl. paved drive to magnificent 10 rm. home. Park-like setting. 1/2 ac. trout pond, barn. Marg Parker. 84-320



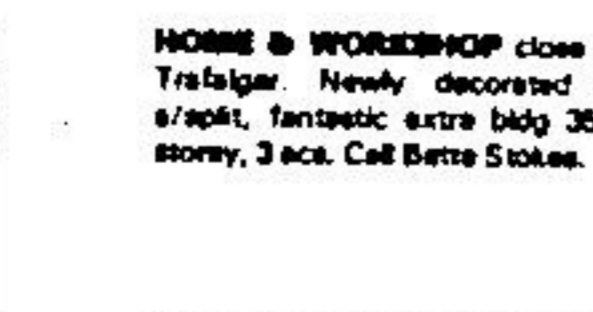
THIS HOME HAS EVERYTHING! Enough room for 2 fam., secluded setting 40 acs. on paved road, games rm., exercise rm., sauna, country kit., formal din., sunken liv. rm., 3 1/2 baths, 1/2 pw/heaters, walk in fridge, steel barn, trout pond. \$179,900. Vendor will hold mtge. Marg Parker. 84-399



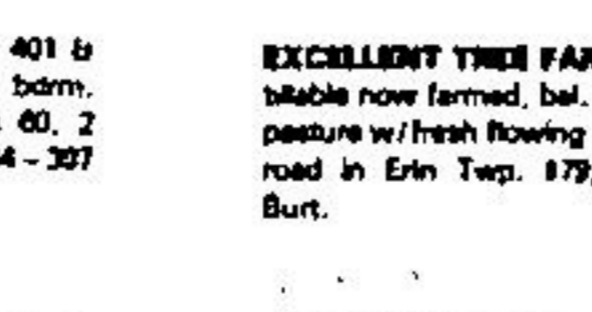
AUTHENTIC NEW CAPE COD. Picturesque 25 ac. interesting design, you'll be impressed by the workmanship. Buy now & choose your personal finishing touches—flooring, solarium? Appt. thru Marg Parker. 84-347



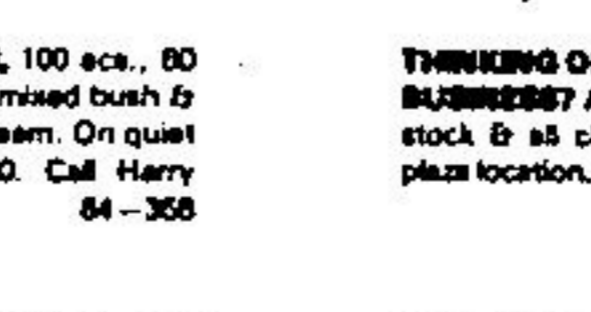
COZY FARMHOUSE FOR THE FAMILY Bush for firewood, land for crops, barn for animals & storage. Good financing. Call John. 84-278



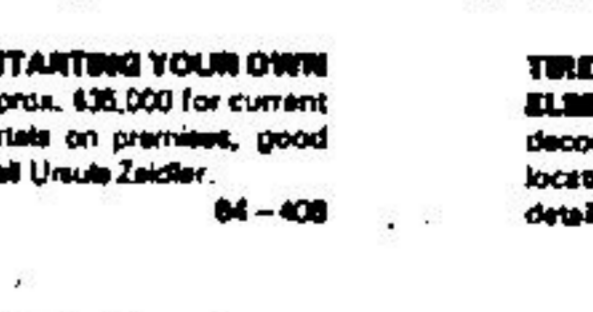
HOME & WORKSHOP close to 401 & Tristram. Newly decorated 4 bdrm. 2/2 split, fantastic extra bldg 35 x 60, 2 story, 3 acs. Call Betty Stokes. 84-397



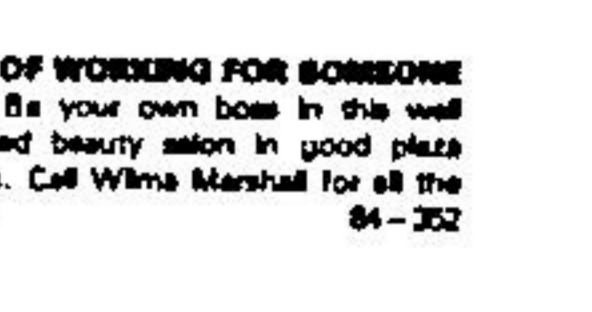
EXCELLENT TREE FARM, 100 acs., 60 titable now farmed, bal. in mixed bush & pasture w/fresh flowing stream. On quiet road in Erin Twp. \$79,500. Call Harry Burt. 84-368



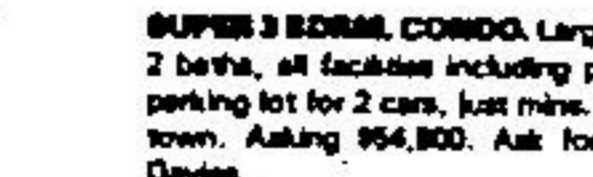
THINKING OF STARTING YOUR OWN BUSINESS? Approx. \$36,000 for current stock & all chattels on premises, good plaza location. Call Ursula Zedler. 84-408



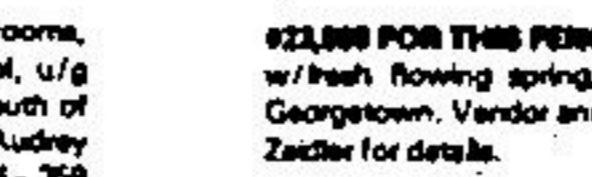
TIRED OF WORKING FOR SOMEONE ELSE? Be your own boss in this well decorated beauty salon in good plaza location. Call Wilma Marshall for all the details. 84-352



WANT TO BUILD YOUR OWN HOME? 3 ac. N. of Hwy. 7, driveway is in, nicely treed at front, creek alongside. Vendor anxious to sell. \$39,800. Ask for Ursula Zedler. 84-191



SUPER 3 BDRMS. CONDO. Large rooms, 2 baths, all facilities including pool, u/g parking lot for 2 cars, just mins. south of town. Asking \$54,800. Ask for Audrey Davies. 84-359



\$21,999 FOR THIS FENCED BLDG. LOT w/fresh flowing spring, 15 mins. from Georgetown. Vendor anxious. Call Ursula Zedler for details. 84-189



44 ACRES OF MAPLE & MIXED BUSH located south of Erin Golf Club. Drive way installed, pond site. Asking \$88,900. V.T.B. 1st Mortgage. Call Herb Spitzer. 84-351

Nancy Keenan 877-4422
John Kroonen 877-2722
Sharon Pinkney 877-8678
Karen Fleckstein 878-3648

Wilma Marshall 877-8287
Cathy Perago 877-8438
Pat Hammer 877-3648
Murray Smith 883-8315

Bill Henderson 877-8438
Harry Burt 819-886-4879
Audrey Davies 877-8367

Olya Fedun 877-8716
Ursula Zedler 877-8388
Marg Parker 819-833-8161
Herb Spitzer 877-8888

Betty Stokes 877-4882
Alice Pokuda 877-8346
Brenda Payton 877-7878

Ron Lacey 877-8884
Ev Patterson 877-8888
Diane Arnold 819-833-2138
Dave French, Mgr. 487-8797