

RE/MAX

**Open House
Saturday, May 26
1-4 p.m.**

58 Hewson Cres., Georgetown

This 3 bedroom bungalow has a finished rec room with fireplace, backs onto a ravine with stream. Priced right at \$78,500. For more information call Ed Allen 456-2200.



Century 21

**Open House
Saturday, May 26
2-4 p.m.**

**281 Queen St. East, Acton
Sign Posted**



ROYAL CITY

**Open House
Sunday, May 27th
1:30 to 4:00 p.m.**

North of Acton on Hwy. 25 to Hwy. 24 - west on Hwy. 24 to Everton. Turn left at Teddy Bear Inn & follow signs. 4 bedrooms, 1/4 acre. \$75,500. Susan Carrier 877-5296.

3285



A.E. LePAGE

**Open House
Sunday, May 27th
2:00-4:30 p.m.**

Country Ranch Bungalow \$119,900

2,000 sq. ft. of living space on 1 level. Cathedral ceilings in DR, LR, kit, FR & master bdrm, main floor laundry rm plus barn. Directions: Trafalgar Rd. to Ballinafad Sideroad, W to 6th Line, N approx. 1 km. Call Ross Nairn 877-0173.

25-1



A.E. LePAGE

**Open House
Sunday, May 27
2-4 p.m.**

Limehouse

1/2 mile west of No. 7 Hwy. Halton Rd. 43. Quality custom 2200 sq. ft. rancher. \$149,000. Fantastic financing. Call Marion Brown or Dora MacKinnon 877-0173.

13-2



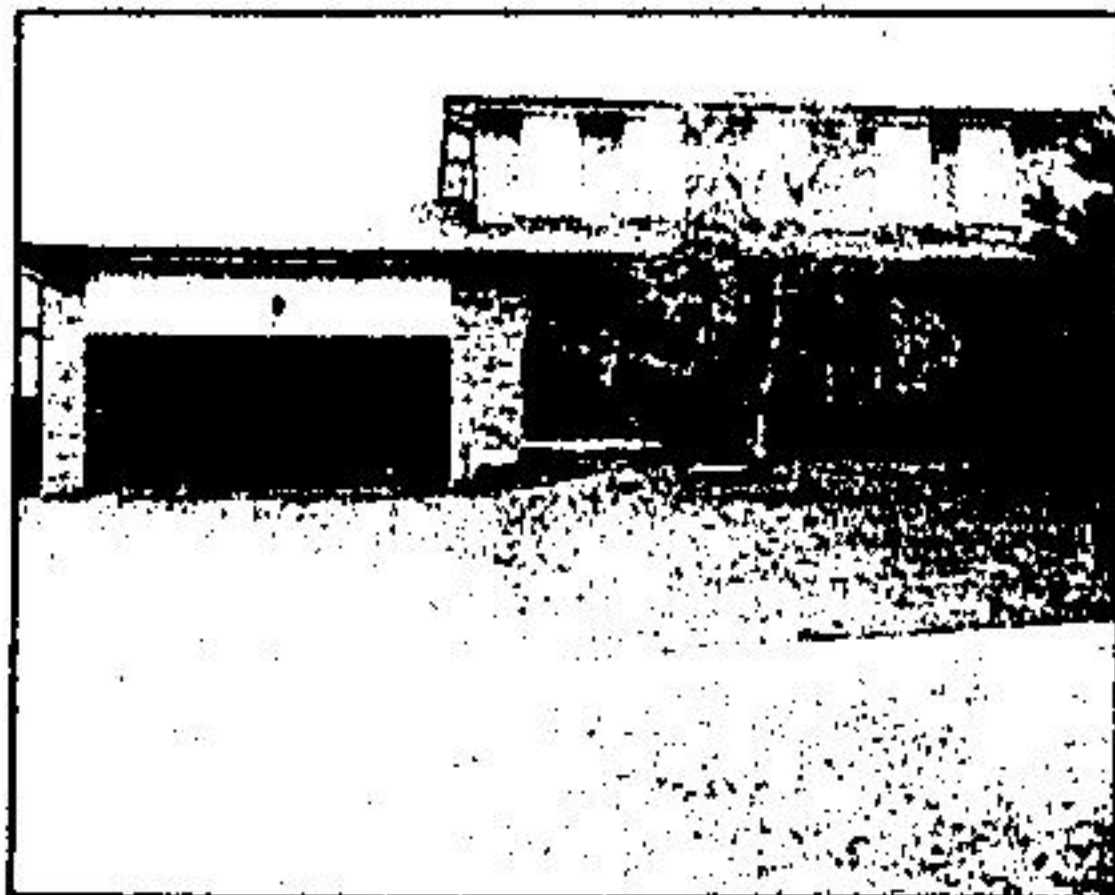
ROYAL CITY

**Open House
Sunday, May 27
1-3 p.m.**

Everton Village

Hwy. 25 north to Hwy. 24. West on 24 Hwy. to 6th & 7th concession (Teddy's Everton Inn). Turn south (left) to Everton. Follow signs to Victoria Rd.

"New Stone & Cedar Home \$119,900" Gorgeous 4 bedroom, 3 skylights, open concept, finished throughout. Call Barbara or Alex Glenn 877-5296 or 853-0923.



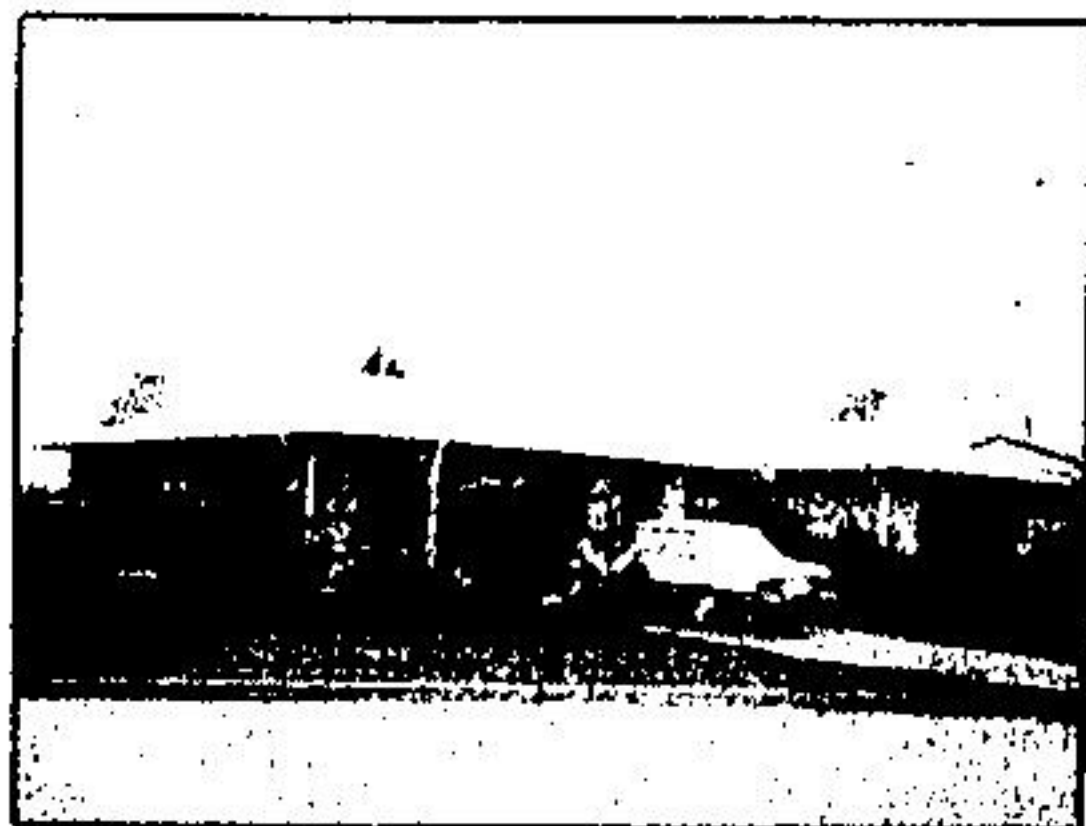
A.E. LePAGE

**Open House
Sunday, May 27, 2-4 p.m.**

18 Evans Place, Georgetown

Just move in to this A-1 executive home loaded with extras. Call Marilyn Champ 877-0173.

4-3



A.E. LePAGE

**Open House
Sunday, May 27
2:00-4:30 p.m.**

112 Elizabeth Street, Acton

Perfection inside & out. Outside beautiful gardens with the Lake behind. Inside - expensive decor with many additions. Call Prudie Bond 877-0173.

2-5