

Homemaker Jaycee hike to restore longhouse program may be improved

Frail, aged and physically handicapped residents of Halton may get some extra help with their housekeeping chores if the region is chosen for a pilot program being launched by Queen's Park.

Ontario's Ministry of Community and Social Services will select six areas for the pilot homemaker projects, aimed at helping elderly and disabled residents remain in their homes and maintain their roles in the community by obtaining help with household chores.

For the first time, residents who do not have specific medical needs for such help can qualify. Terms for provision of the service will be improved and the cost of providing such services will be borne increasingly by the province rather than the municipality.

Regional council last week endorsed a request by the Halton District Health Council to have the region designated for one of the pilot programs. Halton Helping Hands would be responsible for contracting heavy house-cleaning work, operating in conjunction with the Red Cross, which would handle all other aspects of the program.

Halton's social services department administers an average of eight home-making cases a month, running up \$10,000 in expenses 1983.

The region is hoping that its participation in the pilot program would reduce the amount of funding needed by Halton Helping Hands, since the province would cover the costs of heavy housecleaning work.

4.5% increase

Hydro, union sign pact

An agreement between outside Hydro workers and the Halton Hills Hydro Commission will give the workers a 4.5 per cent increase over one year.

Other benefits include boosting the annual boot allowance from \$40 to \$50 and insurance claims for glasses was increased from \$75 over two years to \$100 over the same period.

Manager Jerry Trudell said guidelines for the commission wage increases was 5 per cent and they were pleased they had stayed within them. However, the union would not go for a two year deal.

The agreement covers 26 workers, members of the International Brotherhood of Electrical Workers, Local 26.

The Jaycee Organization in Georgetown, Burlington, and Milton have organized a Hike-A-Thon to raise \$50,000 for the reconstruction of one longhouse at the historic Indian village at the Crawford Lake Conservation Park on Guelph Line at Steeles Avenue.

The Crawford Lake Conservation Area is important since the lake is one of the very few Meromictic Lakes in Canada. Meromictic means that there is no water movement at the bottom and as a result, scientists with specialized equipment are able to take samples from the lake bottom and accurately trace the history of life in this part of Canada over many centuries.

As a result of these tests, archaeologist

have found the remains of an Indian village that was situated around the lake in 1434 to 1459. The Jaycees are trying to raise money to build a longhouse on the original site. When reconstructed the Indian village will be a major attraction for the tourism industry as well as a major educational facility for the children of today and future generations.

There will be three hike routes each travelling through a section of the Bruce Trail taking the hikers to Crawford Lake. Once the hikers reach Crawford Lake there will be food and refreshments available as well as a display from the Centre of Inland Waters. Hikers will be allowed to tour the Lake itself as well as view the longhouse

that is presently under construction. The new Interpretive Centre that is just completed will also be open for viewing.

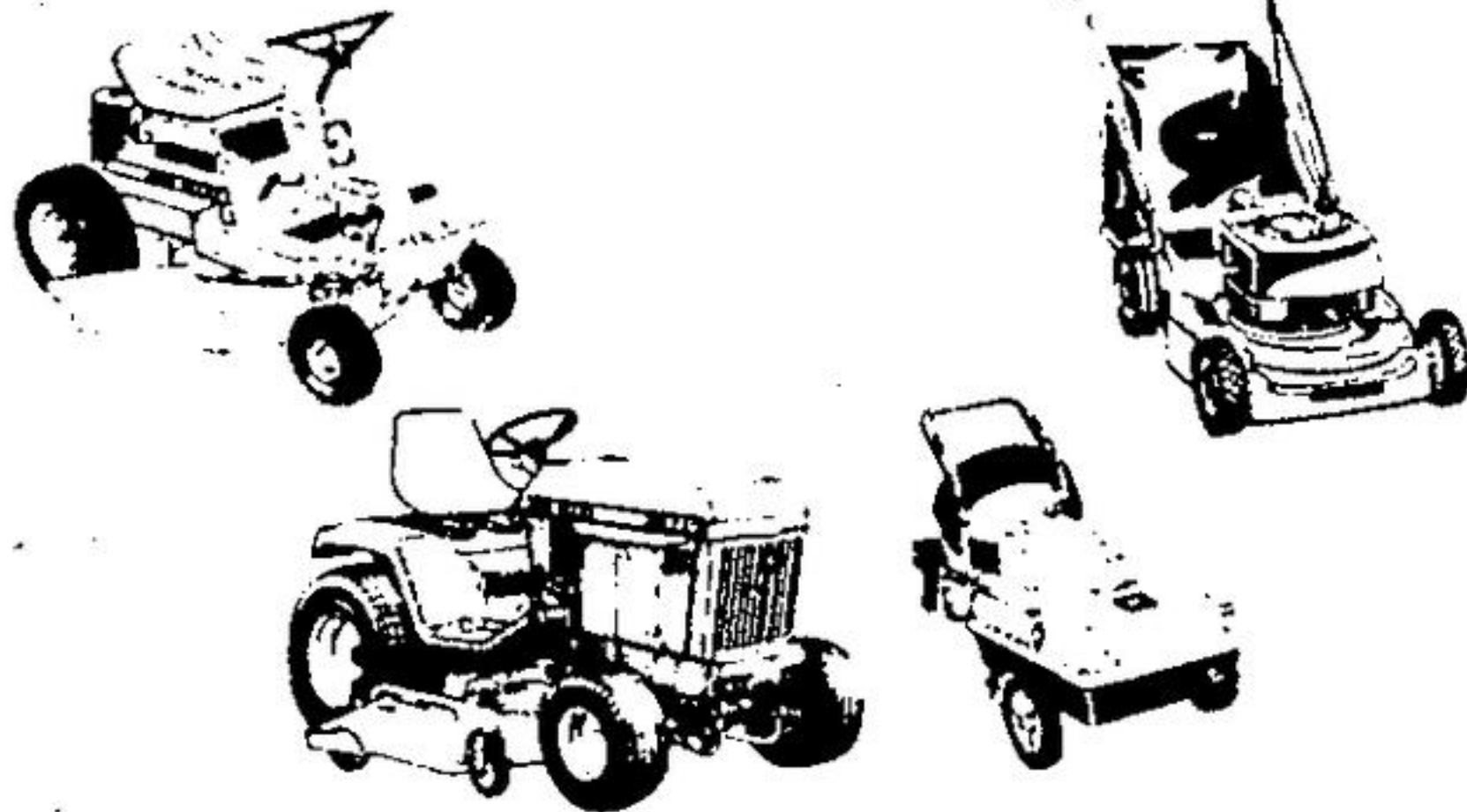
Students in Halton will be selling \$2.00 sponsorship tickets in the area. But to get families and individuals involved in this most worthy event tickets are being sold to allow their participation. Family Passes can be obtained by calling one of the numbers in their area that follows this write-up. Hikers can purchase family passes or an individual pass at the starting point in their community. Local hikers will be bused from Georgetown Market Centre to a starting point where they will hike to Crawford Lake. Each hike route will range from 6.5 to 8.5 Kilometers in length.

Chiropractor to attend seminar

Dr. Gabor Madarasz of Georgetown will be attending a personal injury seminar to be held in Toronto at the Bristol Place Hotel on May 28, 1984. The seminar will be conducted by Dr. Bruce Hagen of the Hagen Accident and Industrial Injury Clinic of Sioux Center, Iowa, a clinic devoted to the correction and prevention of whiplash and industrial injury symptoms and disorders.

Seminar sessions will include detailed procedures on X-ray analysis, physical examinations and diagnosis, testifying in court, insurance and narrative reports. Mrs. Madarasz will be accompanying Dr. Madarasz to Toronto.

OUR BIGGEST SALE OF THE YEAR WITH SAVINGS UP TO \$500!



DOWN TO EARTH VALUES ON THIS YEAR'S PICK OF THE CROP

Right now we've got a terrific line-up of quality John Deere products at substantial savings. For example, you can save up to \$500 off our regular selling price of a new John Deere lawn and garden tractor, up to \$115 off

riding mowers, \$65 off high pressure washers, \$45 off walk-behind mower! These are limited-time offers, so hurry in and get yourself a Down to Earth Value!

Country Mart Ltd.



CORNER HWY'S 24 & 25 • OSPRINGE • 8 MILES NORTH OF ACTON

853-3901 833-9332

INCREDIBLE... SAVINGS at Aladdin LIGHTING

LARGE SELECTION OF

BRASS TABLE LAMPS **65⁰⁰**

BRASS BOUDOIR LAMPS **24⁹⁹**

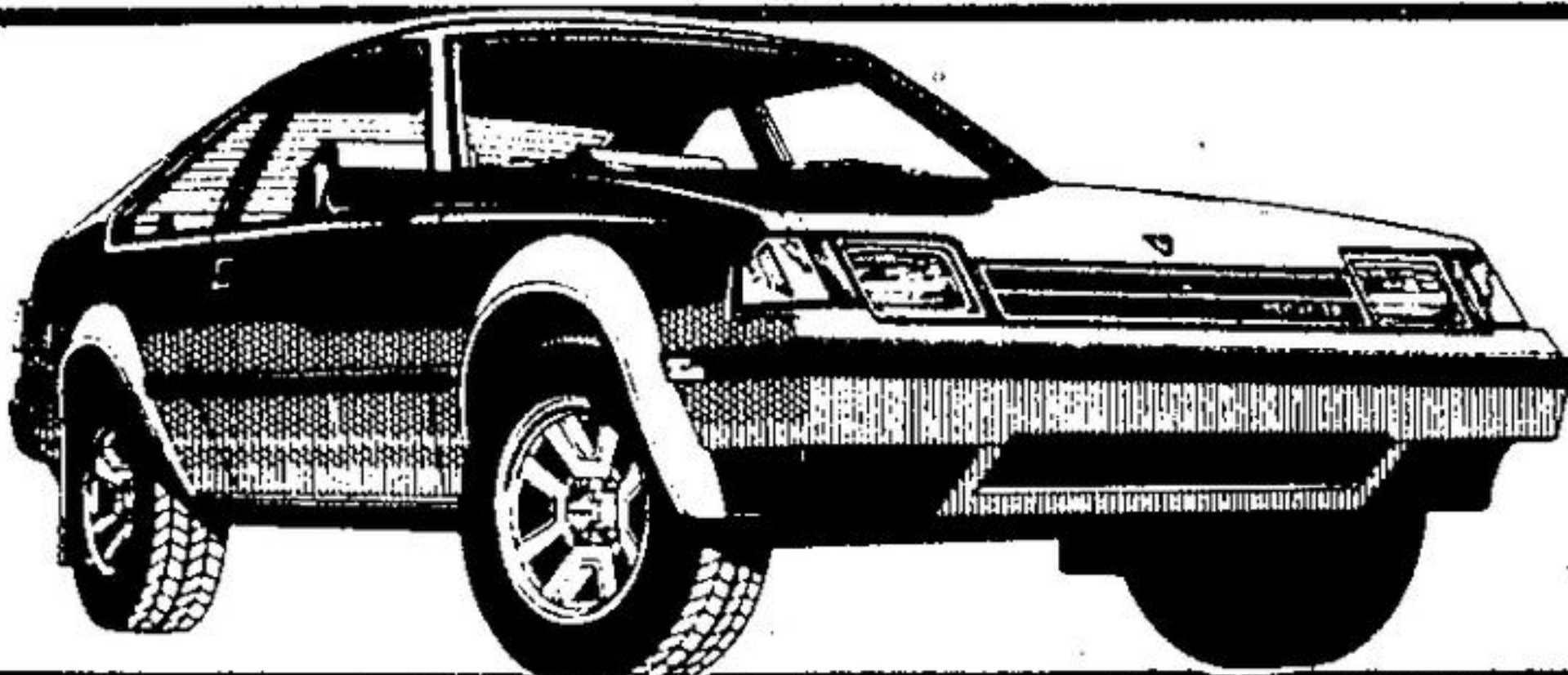
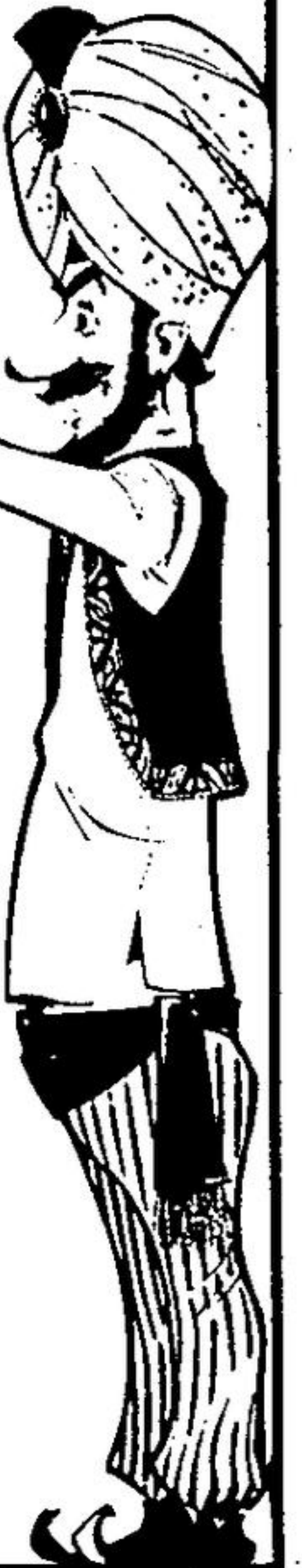
WHILE QUANTITIES LAST!

ONLY AT

Aladdin LIGHTING

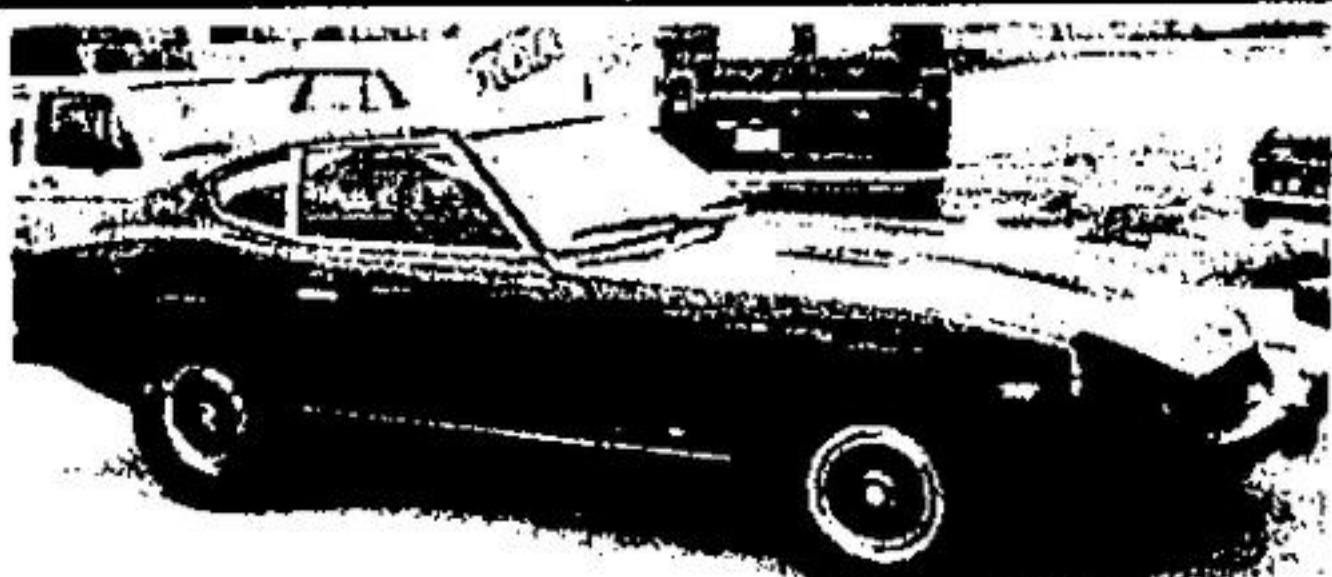
245 GUELPH ST. GEORGETOWN

877-0880



1983 DATSUN 210 WAGON

- 5 SPEED
- FINISHED IN METALLIC GOLD
- LIKE NEW
- 6 MONTH OR 10,000 KM POWERTRAIN GUARANTEE
- STOCK 3229



77 DATSUN 280Z
5 speed, sunroof, fuel injected, 6 cyl. Stock 3228.



81 TERCEL 4 DOOR SEDAN
Excellent family car. Stock 3218. 6 month or 10,000 km powertrain guarantee.



81 DODGE COLT
Automatic, economical and reliable. Stock 2116-1. 6 month, 10,000 km powertrain guarantee.



81 TOYOTA TERCEL
2 Door Sedan. Stock 3227. 6 month or 10,000 km powertrain guarantee. PRICED TO CLEAR!

1983 CELICA GTS

SUNROOF
TWO TONE PAINT
GREY/BLACK
20,000 km
STOCK 3231

SAVE

SUPER SPECIAL



1982 TOYOTA SUPRA GTS

All performance options only 35,000 km. Stock 3215

1 YEAR 20,000 KM POWERTRAIN WARRANTY

COMPLETE SERVICE FACILITIES FOR IMPORT AND DOMESTIC CARS — LOW LOW CHARGES —

SERVICE & PARTS OPEN 8 a.m.-6 p.m. MON.-FRI. 8 a.m.-8 p.m. THURSDAY

AT THE HOME OF THE PRICE BEATERS

GEORGETOWN TOYOTA

343 GUELPH STREET, GEORGETOWN

Hwy. No. 7 at Armstrong Avenue

877-2296

877-2297

TOYOTA DEALER APPROVED USED CAR SPECIALS

TOYOTA

...We Care

LEASE RATES ON REQUEST!

TOYOTA DEALER APPROVED USED CAR SPECIALS

OH WHAT FEELINGS TOYOTA

