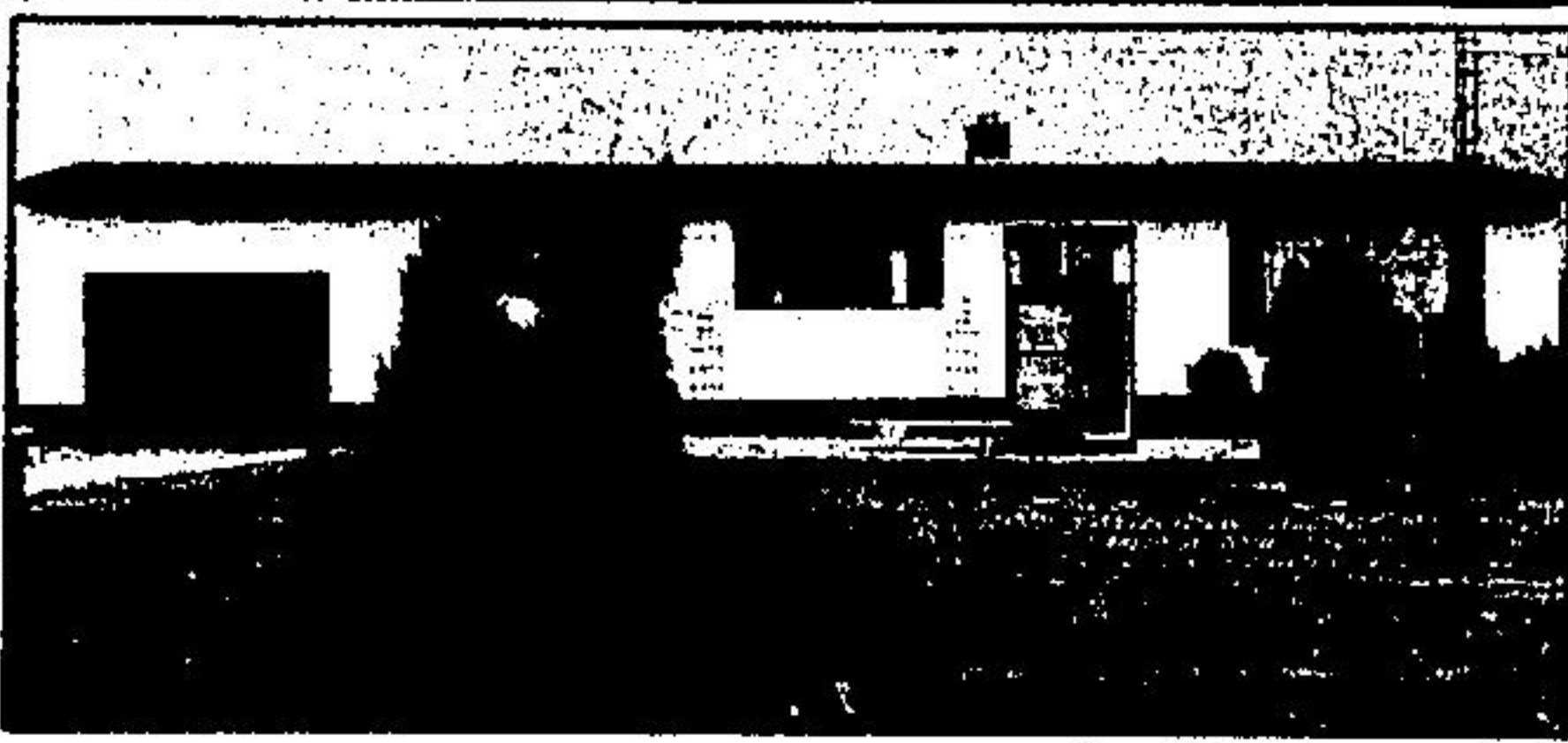


# HOMES

IN HALTON HILLS AND AREA



**A.E. LePAGE**

**JUST NORTH OF GLEN WILLIAMS**

This open concept 3 bedroom raised bungalow with attached garage on 100' x 190' lot is a must to see. Interested? Call Deanna Allen, A.E. LePage Real Estate Services Ltd. 877-0173. 9-1



**GRANDMA'S HOUSE**

Just the way you remember it! Big front porch, gleaming floors, formal dining room, neat as a pin—and a giant tree at the back door. All for \$72,900 in Hillsburgh. Don't miss it! Call Kathleen Dobbie 877-6917.



**Century 21**

**ON 32 ACRES ON THE GUELPH LINE**

More than a hobby farm with 4 fenced fields—all workable—super 6 years old steel barn 80' x 40' with skylight, water and hydro. Can accommodate any kind of stock—loose housing at present. Quality construction in 5 bedroom ranch bungalow. Call K. Maxwell 836-4500 or 853-0508.



**ROYAL CITY**

**20 MINUTES TO AIRPORT**

New 7 room custom brick nestled in tall pine tree 3 acre lot. Main floor family room, 2 1/2 baths, 2 car garage. Sunken cathedral living room. \$174,500. Call Howard Caton 877-5296. 4583



**ARTHUR F. JOHNSON & ASSOCIATES LIMITED REALTOR**

**LARGE TREE LOT**

Super 3 bdrm. brick home with hardwood floors. All appliances & drapes. Great value! Asking \$65,900. Ask for Audrey Davies. 84-348



**A.E. LePAGE**

**GRAND OLD 2 1/2 STOREY**

Spacious double brick residence, hardwood in living, dining & main floor family rm, refurbished pine on second floor, original wide wood trim and wainscoting, new wiring, walk-up attic, garage, large mature lot in Georgetown. \$109,000. Call Sandra Naim, A.E. LePage Real Estate Services Ltd. 877-0173. 11-1