

## Black exhaust symptom of sticky choke

What causes black exhaust smoke?

Most often, says Car Care Council, it's due to a faulty carburetor choke that is sticking shut and not allowing enough air into the carburetor.

Poor performance, starting difficulties and increased gasoline consumption often accompany the black smoke.

The carburetor choke is designed to improve starting by providing a richer fuel mixture. As the engine warms up, the choke plate opens allowing more air into the carburetor for the correct air/fuel mixture.

A sticking choke prevents fuel from mixing with air causing the engine to run rich.

Often, a simple adjustment or replacement of the choke spring will correct the problem.

Black smoke from a rich-running engine may also be due to an old, worn carburetor or a severely clogged air cleaner.

A complete carburetor overhaul or replacement of the old part may be necessary to correct the problem.

Air filters require regular service, particularly if you drive in dusty or heavily industrial areas. Dirt clogged passages prevent air from reaching the engine.

A simple test is to hold the air cleaner with a light bulb in the center. If you can't see light through the filter, it's time to replace the filter.

A rich-running engine not only wastes gas but can also harm other components of the engine. Black, sooty spark plugs can lead to misfire and unburned gas can leak into the crankcase, contaminating oil.

After fuel system service, a complete tune-up along with an oil and filter change is recommended by auto experts.

## Wiper blades need replacing

If you're a new car buyer, ask the salesman to include an extra set of windshield wiper blades in the deal.

This suggestion from Car Care Council is based on the fact that the first parts likely to need replacement on a new car are the wiper blades. Sometimes they've lost their wiping ability before the owner takes delivery.

The rubber part of the blade "wears out" more from the elements than from actual use. When a car sits for a long period of time on the dealer's lot, the natural rubber deteriorates from the rays of the sun and from contaminants in the air. The blades turn brittle.

Even under normal conditions windshield wiper blades have a life expectancy only from six months to a year. After that period they may begin to streak and smear.

In a recent survey of 462 Automotive Service Council members, these repair shop owners reported car owners delaying windshield wiper blade replacement far beyond the safety point.

Their recommended replacement interval was annual; but their customers are waiting over twice that long to replace wiper blades, most of them putting it off until the wipers don't work.

## Preventing rust...

(Continued from Page 1)

covered.

If your car is in an accident after it has been rustproofed, the insurance settlement should provide for treatment of the repaired areas by the original rustproofing. Many car owners forget this in their haste to settle accident claims.

Preventing corrosion is easier than curing it.

# SAY HELLO TO THE NEW GOODYEAR ALL-SEASON RADIAL Vector A STEP AHEAD OF THE REST

Say hello to Vector's deeper tread.

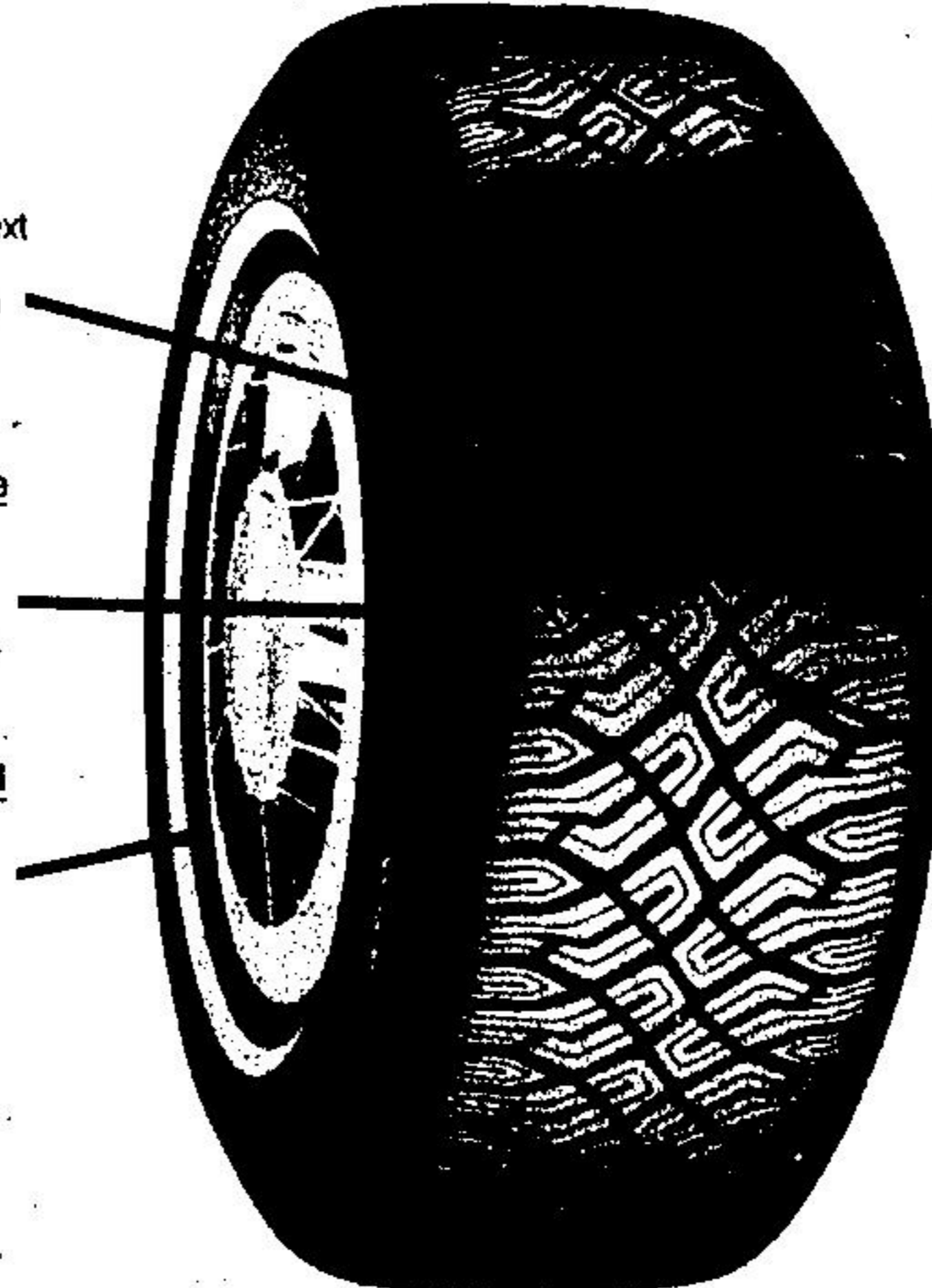
Vector's tread is 10% deeper than our next leading all-season radial. So you get up to 25% longer tire life.

Say hello to longer tire life with Vector.

Vector's tread design and contour result in improved tire durability.

Say hello to increased fuel economy with Vector.

Vector's radial ply construction coupled with easy rolling tread compound means radial fuel economy.



Say hello to Vector's revolutionary tread design.

The unique crisscross grooves channel water, snow or mud out the sides to improve traction all year 'round.

Say hello to Vector's quiet ride.

The Vector's crisscross tread design contributes to a quiet ride.

## "AND SAY HELLO TO LONGER TIRE LIFE AND BETTER TRACTION."



### QUEEN'S TIRE SERVICE LTD.



IN ACTON:  
387 Queen St. E., 853-3940

2 LOCATIONS  
TO SERVE YOU

IN MILTON:  
593 Main St. E. 876-4671

# GOODYEAR

WE WANT YOU TO HAVE THE BEST RADIAL TIRES IN THE WORLD.