

SOLD
THE SIGN OF PERFORMANCE



Ursula Zeidler with this week's mortgage rates. The mortgage rates quoted below are prime rates and are available to qualified customers on top quality homes in good locations.
Term 1 yr. 2 yr. 3 yr. 4 yr. 5 yr.
Rate 10% 11% 12 12% 12%

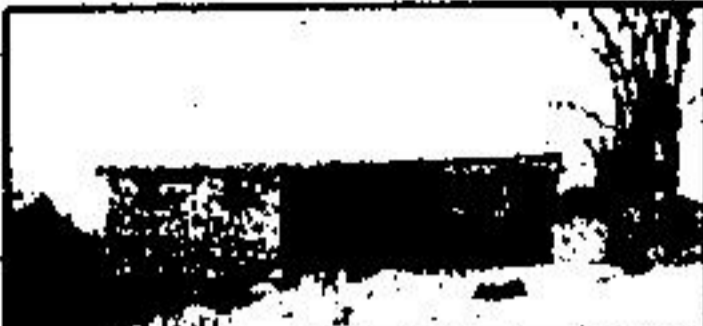
**247 Guelph St.
Georgetown**

877-5165

THIS WEEK'S AFFORDABLE HOMES



ERIN—REDUCED—\$81,900. Two families—restored 2 sty. has charm. Enjoyable features 1) yr. round hot tub, with deck. 2) \$300 mthly. from Apt. 31 Super 1/4 Ac. lot. 4) Det. garage w/shop. Call Harry Burt. 84-296



GEORGETOWN BEST BUY 3-Plus bdrms., large eat-in kit., fam. rm., w/fireplace. Asking \$78,500. Call Brenda Payton. 83-264



EXECUTIVE 7 ac. estate, features 1) brick & alum. 2 sty. w/7 rms., 2) heated I.G. pool, 3) cement block barn, 4) roofed kennel w/illcense. Call Harry Burt. 83-232



FORKS OF CREDIT—CALEDON \$287,900. Gorgeous view, 4 bdrms., 3 walkouts, Florida rm., 2 F.P., indoor solar heated pool, small barn, quick possession! For more details ask for Ursula Zeidler. 84-321



OLDER PART OF TOWN, mature trees, sharp 4 bdrm., inground concrete pool. Ursula Zeidler. 84-285



LARGE WORK SHOP On this 1 acre lot, nice 3 bdrm. B/S, Rec. Rm. with F.P. and W.O., deck off dining room, 2 baths, dbl. car gar. Asking \$129,900. Ask for Audrey Davies. 84-317



TOWNHOME at last year's price of only \$58,900, 11% 1st mort. due July 1986, poss. April 1st. Make your move. Call Herb Spitzer 877-5165. 84-310



TERIA COTTA 3 bdrms., sunken liv. room w/brick fireplace, separate dining room. Walkouts to treed 1/2 acre & pool. \$98,725. Call Marg Parker. 84-325



SHARP 3 BDRM. HOME Walkout to cedar deck, large fam. rm. w/fireplace, great location, asking \$83,900. Ask for Brenda Payton. 84-328



1/2 ACRE AT SILVERCREEK Immaculate bung. for only \$74,900. For more info. call Ev Patterson. 84-283



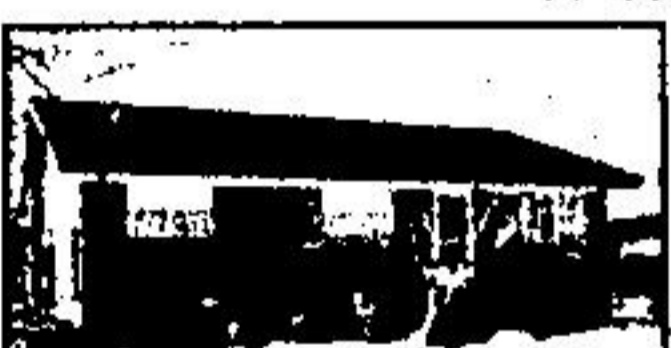
UNIQUE COUNTRY HOME ON TREADED ACRE Just minutes from town 3 bdrm., garage, F.P., Eat-in kitchen, Bit-in appliances. Call Ev Patterson for information. 84-329



COUNTRY LIVING IN TOWN Lovely lge. 4 bdrm. backsplit, mn. fl. F.R., 2 baths, 1 1/2 car, pool, lge. treed lot. Asking \$89,900. Call Audrey Davies. 84-270



WATCH THE FRUIT BLOSSOMS UNFOLD Perfect 4 bdrm. home on 1/2 acre. Gardener's delight only \$89,900. Details from Marg Parker. 84-290



BEAUTIFUL—CAN BE 1 FAMILY OR IN-LAWS Included. Completely finished suite—large yard, garage. Many features. Call Ev Patterson for details. 84-328



HOME OF YOUR DREAMS This 4 bdrm. home has everything including pool & Florida room. Ask for Brenda Payton. 84-319



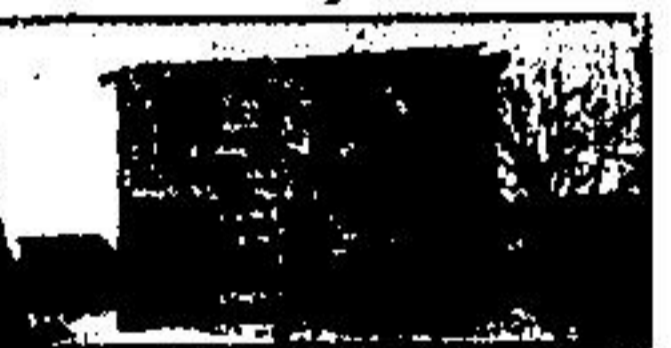
COUNTRYSQUIRE Looking for a family to enjoy 4 bdrms., mn. fl. fam. rm., inground pool and x-Lg. lot. \$109,900. Call Alice Pokluda. 84-322



LOCATION EXEC. 5 bdrm. rancher, 10.5 rolling acres, 2 F.P.'s, 4 baths, 3 walkouts and much more. \$229,000. Ask for Audrey Davies. 83-200



REDUCED—\$168,900. Immaculate 3 bdrm., M.F. F.R. with frple., large landscaped lot on cul-de-sac. Many extras, incl. cent. air. See it today with Ev Patterson. 84-280



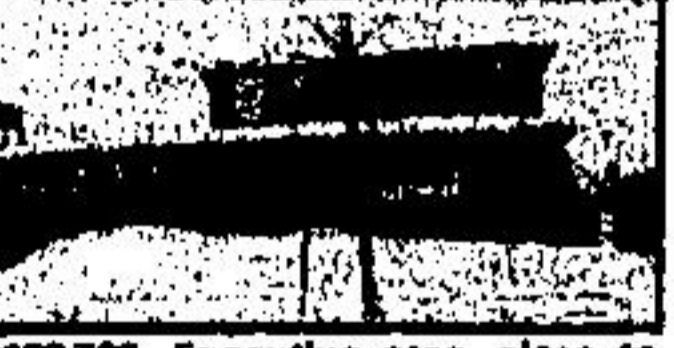
BRAMPTON Lovely 4 bdrm. home on large lot. Fin. Rec. Rm., incl. all appliances. Asking \$76,000. Plus land lease. Ask for Audrey Davies. 84-265



TO BE BUILT on 2.4 acres, overlooking 2 ponds, 3 miles from Georgetown, for more information call Herb Spitzer 877-5165. Full price \$248,900. 84-327



DISCRIMINATING BUYER 3,400 sq. ft. brick rancher. 80 acres, trout pond, horse barn, mature bush, mins. to Town. Call Marg Parker. 84-320



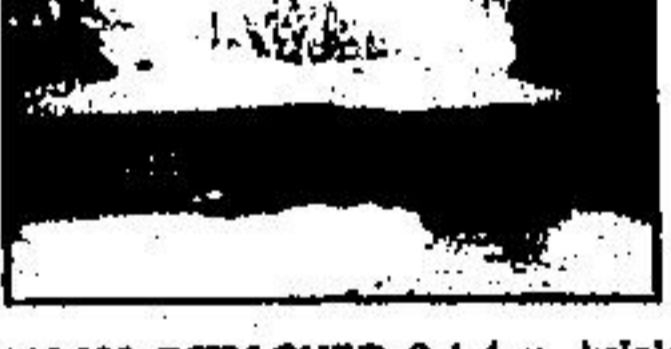
EXECUTIVE area, close to shopping and schools, 4 bdrms., 3 bath, mn. fl. fam. rm., w/walkout to lg. lot. Call Alice Pokluda. 83-226



NEARLY 1/2 ACRE, PRIVATE LOT, 3 bdrm., garage, new kitchen done in pine, shows lovely. Super financing. Asking \$83,900. Ask for Audrey Davies. 83-263



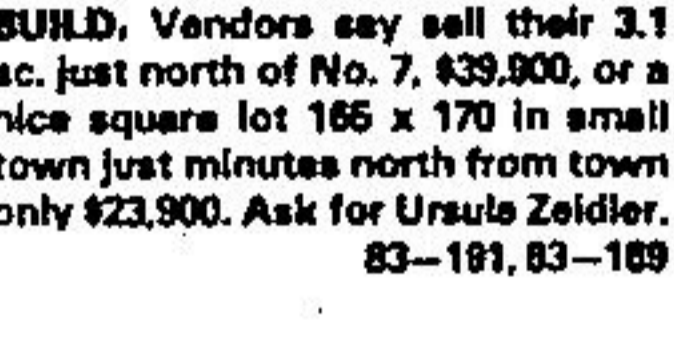
SOLID BRICK HOME R.R. & Extra bath, det. brick gar., 60' x 110' lot. Handy to stores and schools. \$83,900. Call Alice Pokluda. 84-306



\$89,900 DETACHED 3 bdrm. brick bung. Dinrm. updated. No maintenance exterior, 1 car garage. Call Harry Burt for more info. 84-292



2 OR 3 BEDROOM HOME ON LARGE LOT Only \$30,900. Lot fees \$100.00. No tax or sewers to pay. Call John Kroezen. 84-271



TWO BUILDING LOTS READY TO BUILD, Vendors say sell their 3.1 ac. just north of No. 7, \$39,900, or a nice square lot 165 x 170 in small town just minutes north from town only \$23,900. Ask for Ursula Zeidler. 83-181, 83-189

INVESTOR/DEVELOPER—ERIN AREA Draft plan granted to bld. 24 det. homes on 1/2 ac. lots. Scenic 17.9 acs. Red. to \$99,500, w/terms. Anxious. Call Harry Burt at office or 865-4679. 84-278

SHARP 3 BDRM. TOWNHOUSE w/walkout to yard, eat-in kit. Asking \$44,900. Call Brenda Payton. 84-305

A SPECIAL HOUSE Det. 2 bedroom, full basement, single car garage, only \$65,900. Located in Brampton. 84-316

TWO BUILDING LOTS READY TO BUILD! 31 ac. just north of No. 7, \$39,900, or a nice square lot 165 x 170 in small town just minutes just north from town only \$23,900. Ask for Ursula Zeidler. 83-191, 83-189

PERFECT SETTING—3 bdrm. log home on 2 1/4 acres. Sheltered by mature trees. \$106,000. Call Marg Parker. 84-288

VENDOR ANXIOUS. Lovely century home in Erin. Main St. location, zoned commercial. \$86,900. Call Diane for info. 83-222

80 x 148 LOT Forks of the Credit Rd., cabin overlooking river, building permit for new home. Hydro and well \$69,900. Herb Spitzer 877-5165. 83-282

"LIVE & EARN" GUELPH Brick duplex in Ex. Cond. Nr. downtown. Reduced \$47,500. If you are looking for home ownership, here's a good place to start. Call Harry Burt. 84-304

- | | | | | | |
|-------------------------|-------------------------|-------------------------|------------------------|----------------------------|------------------------|
| Nancy Kohnen 877-4422 | Wilma Marshall 877-8287 | Deve McMullen 877-8483 | Audrey Davies 877-8367 | Marg Parker 819-833-8161 | Brenda Payton 877-7578 |
| John Kroezen 877-3772 | Cathy Perago 877-8438 | Harry Burt 519-865-4679 | Herb Spitzer 877-8856 | Ev Patterson 877-8888 | |
| Sharon Pinkney 877-9579 | Pat Hammer 877-3646 | Lorraine Riley 877-3827 | Bette Stokes 877-4862 | Diane Arnold 819-833-2138 | |
| Karen Flahobin 877-8883 | Murray Smith 863-6316 | | Alice Pokluda 877-6346 | Dave French, Mgr. 467-8787 | |