

SOLD
THE SIGN OF PERFORMANCE



Herb Spitzer with this week's mortgage rates. The mortgage rates quoted below are prime rates and are available to qualified customers on top quality homes in good locations.

Term 1 yr. 2 yr. 3 yr. 4 yr. 5 yr.
Rate 10% 11% 12 12% 12%

THIS WEEK'S AFFORDABLE HOMES



\$128,700 MAIN FLOOR FAMILY ROOM w/fireplace and walk-out to X-large yard, spacious L.R. & D.R., eat-in kitchen, 4 bdrms., 3 baths. Call Alice Pokluda. 83-228



APRIL 1st POSS. 11% 1st MORTGAGE due 1988, patio doors to garden. Listed at \$69,900. Call Herb Spitzer-877-5165. 84-310



COUNTRY SQUARE Available on large landscaped lot. Perfect home for a growing family. Cres. location. \$109,900. Call Alice Pokluda. 84-322

247 Guelph St. Georgetown

877-5165



BRAMALEA 3 BDRM. LARGE LANDSCAPED LOT inground pool. House and grounds show to perfection. Ask for Audrey Davies. 83-254



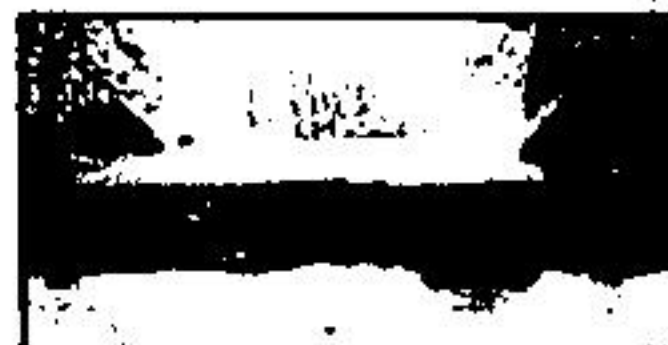
NEARLY 1/2 ACRE PRIVATE LOT 3 bdrm. brick bungalow, garage, new kitchen and bath. \$83,900. Audrey Davies. 83-283



\$17,900 BUYS LOT & BUILDING Located on Main Street, Orton. Call Herb Spitzer. 84-308



START THIS SPRING ON YOUR OWN FARM Mort. available. Call John Kroezen for information. 84-276



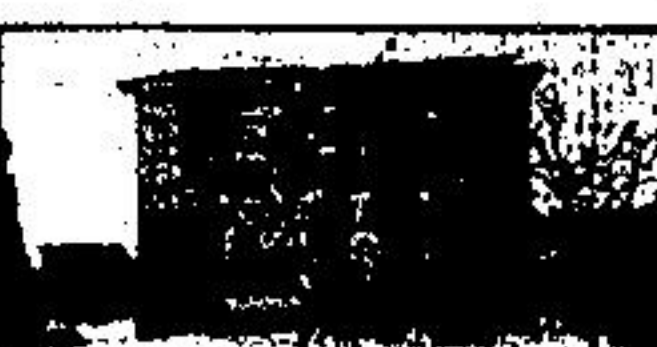
ERIN - \$60,000. Cute & cozy 6 room bung. updated recently. Good divided basement, not finished. Hardwood floor. Anxious. Harry Burt. 84-292



\$83,900 COZY BRICK HOME WITH GARAGE and fenced yard on Crescent. Finished R.R. and extra 3-pc. bath. Remod. kitchen, new roof, etc. Call Alice Pokluda. 84-306



BEST BUY IN BRAMPTON—Only \$65,900. Inspect it with John or Lorraine. 84-315



BRAMPTON Lovely 4 bdrm. home on large lot. Fin. rec. rm. incl. all appliances. Asking \$75,000. Plus land lease. Ask for Audrey Davies. 84-285



COUNTRY LIVING IN TOWN Lovely lge. 4 bdrm. backsplit, mn. fl. F.R., 2 baths, 1 1/2 car, pool. Lge. treed lot. Asking \$89,900. Ask for Audrey Davies. 84-270



DETACHED - \$64,900. 4 bdrms., finished R.R. incl. stove & fridge shows well, close to Park & shopping. Call Ev Patterson. 83-309



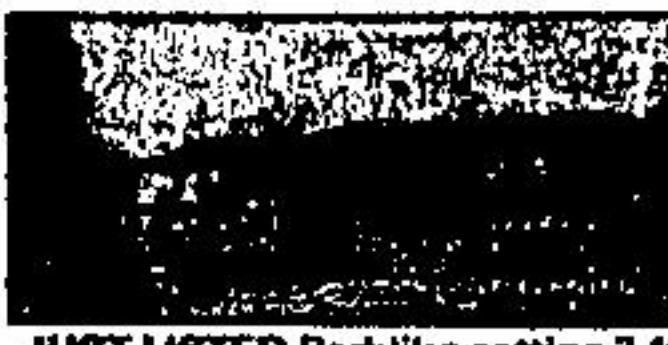
A TERRIFIC BUY 3 bdrms., 1 1/2 baths, pine floors, beam ceilings, triple glaze windows, economical to heat. 2 1/2 acres, mature trees. \$106,000. Call Marg Parker. 84-286



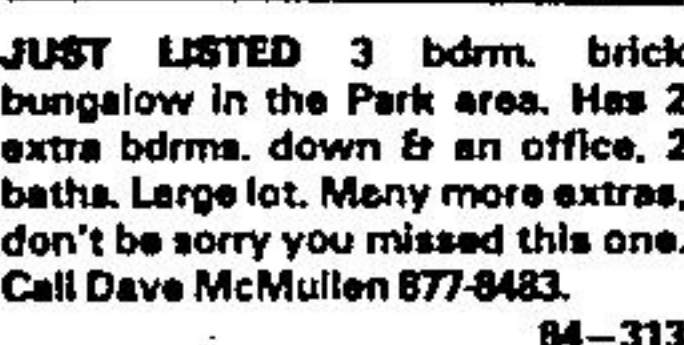
LOCATION Exec. 5 bdrm. rancher, 10.5 rolling acres, 2 F.P.'s, 4 baths, 3 walkouts and much more. \$229,000. Ask for Audrey Davies. 83-200



\$89,900 SEE THIS CUSTOM BUILT 4 BDRM. on large private lot in quiet area with Ev Patterson today. 83-164



JUST LISTED Parklike setting 3,400 sq. ft. brick & stone Rancher. 60 Acres. Horse barn, trout pond, mature bush. Details from Marg Parker. 84-320



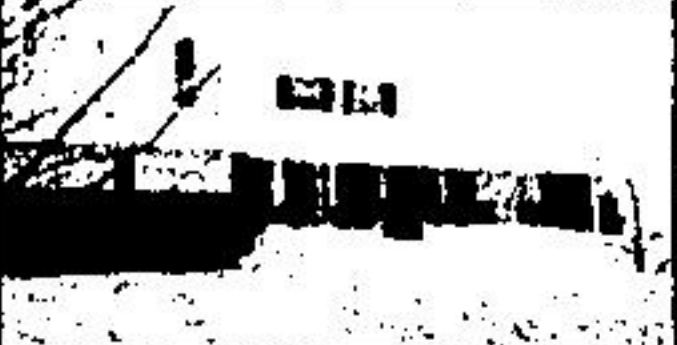
JUST LISTED 3 bdrm. brick bungalow in the Park area. Has 2 extra bdrms. down & an office, 2 baths. Large lot. Many more extras, don't be sorry you missed this one. Call Dave McMullen 877-8483. 84-313



THE HOME OF YOUR DREAMS! Unique open concept design. 4 bdrms., 2 baths, pool, Florida Rm. & lots more. Ask for Brenda Payton. 84-319



ONE OF A KIND You'll love the unique architecture. 3 bdrm. 2 level home with magnificent view. 100 acres, \$275,000. Details from Marg Parker. 84-287



COUNTRY LIVING CLOSE TO TOWN This Family home awaits you. 4 bdrms., Lg. L.R. & D.R., family size kit, mn. fl. family rm. Asking \$102,900. Call Sharon Pinkney. 84-289



ERIN - TWO FAMILY HOME \$86,900. restored, set in trees. Enjoyable features 1. year round hot tub, 2. \$300 monthly from Apt. above, 3. Super 1/2 ac. lot, 4. Det. garage/w. shop. H. Burt 84-286

LOOKING FOR A BUILDING LOT? They are not easy to come by. Vendor says sell this 3.1 Ac. just north of No. 7, \$39,900 or a nice lot 165' x 170' with fresh spring on property for \$23,900. Ask for Ursula Zeldier. 83-181/83-169

BE YOUR OWN BOSS Well established local answering service. For info. call Ev Patterson. 83-187

PRESTIGE LOCATION on the Forks of the Credit Rd. 80' x 140' lot, small cabin, well, hydro, trees, building permit. \$69,900. Call Herb Spitzer 877-5165. 83-262

INVESTOR/DEVELOPER - ERIN AREA Draft plan granted to bld. 24 det. homes on 1/2 ac. lots. Scenic 17.9 acs. Reduced to \$99,500. w/terms. Anxious. Harry Burt. 84-278

COUNTRY LIVING AT AN AFFORDABLE PRICE 4 bdrm., 1 1/2 storey brick home. Completely fenced. treed 1/2 acre. \$89,900. Call Marg Parker. 84-290

BE INDEPENDENT Operate your own successful business from store. Live in 3 bdrm. apt. above. Big lot with barn, could generate extra income. Call Marg Parker. 84-288

Nancy Keenan 877-4422	Wilma Marshall 877-8207	John Kroezen 877-3722	Cathy Parago 877-8438	Dave McMullen 877-8483	Audrey Davies 877-5367	Marg Parker 519-833-8151	Brenda Payton 877-7679
Sharon Pinkney 877-8679	Pat Hansner 877-3546	Harry Burt 519-865-4579	Olga Fedun 877-5718	Herb Spitzer 877-5165	Bette Stokes 877-4562	Ev Patterson 877-9088	Diane Arnold 519-833-2138
Karen Flahahn 877-8663	Murray Smith 863-8315	Lorraine Riley 877-3827	Ursula Zeldier 877-5368	Alice Pokluda 877-5165	877-0346	Dave French, Mgr. 467-6797	