

SOLD
THE SIGN OF PERFORMANCE



Alice Pokkuda with this week's mortgage rates. The mortgage rates quoted below are prime rates and are available to qualified customers on top quality homes in good locations.

Term 1 yr. 2 yr. 3 yr. 4 yr. 5 yr.
Rate 10% 11 11% 12% 12%

**247 Guelph St.
Georgetown**

877-5165

THIS WEEK'S AFFORDABLE HOMES



ERIN—448,500 Solid Alum. covered 6 rm. home. Modern conveniences w/kit updated, 41' x 132' treed lot, stove & fridge incl. Large 12% first. Call Harry Burt. 83-261



COUNTRY LIVING CLOSE TO TOWN 4 Bdrms., 2 1/2 baths, Mn. Fl. Family & Laundry Rms. Spacious & Sparkling! \$102,900. Call Sharon Pinkney. 84-289



CHARMING 2 BDRMS, Main Floor Laundry. Maintenance free outside, lot 40 x 132, don't miss it at \$58,900. Call Herb Spitzer 877-5165. 84-283



ERIN—TWO FAMILY HOME—\$88,999. Restored 2 sty. has charm! Enjoyable features: 1. Year round hop tub. 2. \$300 mthly from apt. above. 3. Super 1/2 acre lot. 4. Det. garage w/shop. Call Harry Burt. 84-296



BUY NOW—MOVE IN JUNE Popular sidesplit model, eat-in kitchen, B/I dishwasher, large lot. Call Nancy—877-5165. 84-282



LARGE LOT Sharp 3 bdrm. main floor, F.R. with F.P. and W/O, 2 baths, double car garage. Asking \$78,900. Ask for Audrey Davies. 84-274



NESTLED BETWEEN TALL TREES Lovely 3 br. bung. w/fin. rec rm., w/brick firepl., wet bar, extra 4 br. & bath. Concrete inground pool, treed lot. Ursula Zeldler. 84-285



JUNE POSSESSION Charming older home. 4 Bdr., family rm., 2 baths. Original wood trim, zoned for small bus. \$88,900. Call Diana 877-5165. 83-222



START RIGHT Maint. free 3 Bdr. home, on quiet St. in Erin. Fin. rec. rm. a/r, backs onto Conservation. \$84,900. Call Diana 877-5165. 83-242



GREAT VALUE, VERY LARGE 4 BRM HOME 2 1/2 baths, 3 fireplaces, 10 Acres for Skiing, Riding, etc. 15 mins from Town. Call Marg Parker. 84-291



COZY 4 BRM COUNTRY HOME on picturesque 1/2 Acre. Fruit trees galore. \$89,900. Call Marg Parker. 84-290



NEARLY 1/2 ACRE PRIVATE LOT 3 bdrm. brick bungalow, garage. New kitchen and bath. \$83,900. Audrey Davies 83-263



WARMTH OF LOG SET AMIDST TALL TREES on 2 1/2 Acres. Beam ceilings, pine floors, a must to see at \$119,000. Call Marg Parker. 84-286



LOCATION Exec. 5 bdrm. rancher, 10.5 rolling acres, 2 F.P.'s, 4 baths, 3 walk-outs and much more. \$229,000. Ask for Audrey Davies. 83-200



LITTLE RANCH—JUST N OF GEORGETOWN on over 3 Acres. Lovely Sidesplit with Main fl. family rm. Small barn. Call Bette—\$120,000. 83-250



FOR THE PROFESSIONALS Immac. 7 Ac. country estate S. of Erin. Expertly landscaped & maintained. Brick & Alum. 2 storey, 7 rms., In-ground pool, horse barn, roofed kennel—you'll love it. Harry Burt. 83-232



POST VICTORIAN—GRACIOUS LIVING in this 3 Bdr. upgraded brick home—move in cond. \$84,900. Ask for Brenda Payton 877-5165 or 877-7578. 83-237



REDUCED! Lrg. 3 Bdr. home w/fireplace & 4th Bdrm. down, Fin. fam. rm., huge kit. \$78,500. Call Brenda Payton 877-5165 or 877-7578. 83-264



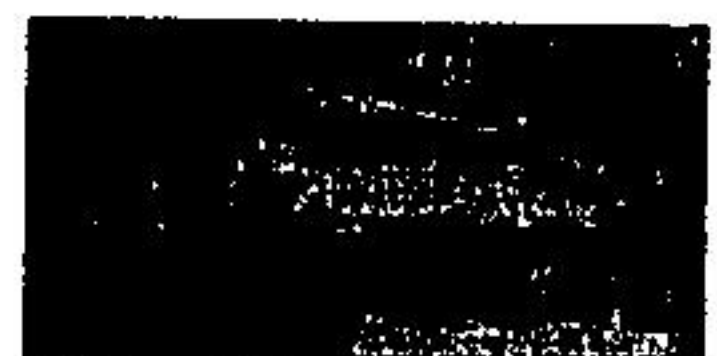
SHARP 3 BDR RAISED BUNG W/Fam. Rm. & F.P., Pool, attached garage, 3 baths. \$87,900. Call Brenda Payton 877-5165 or 7578. 84-273



COUNTRY—\$74,800—PRETTY BUNGALOW on treed half acre. Well maintained, close to town, call Ev Patterson for showing. 84-283



JUST MOVE IN Spotless 3 Bdrm. mainfloor F.R., Frpl., finished basement, all appl., cent. air, on Cul-de-sac. Call Ev Patterson. 84-280



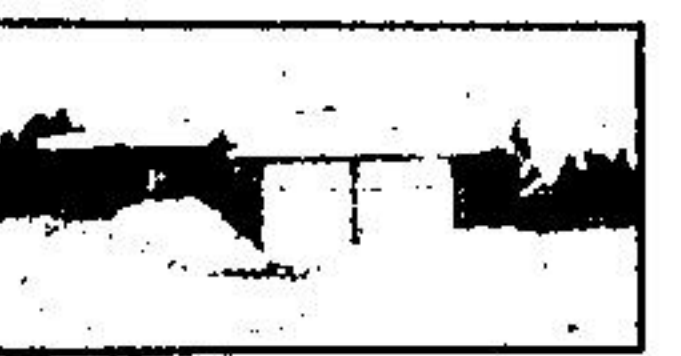
2 STOREY—4 BDRMS. ON LOT 81 x 132 Extras, fireplace, pool, for more info, call Ev Patterson direct. 83-164



PRESTIGE LOCATION on Forks of Credit Rd. 80 x 140 lot. Small cabin, well, hydro, trees, building permit. Don't miss it at \$69,900. Call Herb Spitzer 877-5165. 83-282



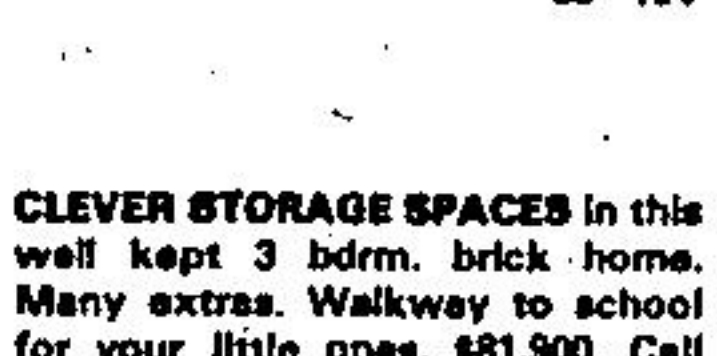
BRICK BUNG, PLUS ALL APPLIANCES possible in-law suite, large fenced lot, plus central air. Call Ev Patterson. 83-288



RUSTIC SETTING OVERLOOKING THE OLD STONE MILL 2,600 Sq. Ft. of family living, 5 Bdr., Fam. Rm., fireplace and more. Call Diana 877-5165. 84-294



GREAT LOCATION Room for animals, garden & storage, 4 bdrm. home for the Family. Large Kitchen, Dining & Living Rm. Call John 877-5165. 84-278



CLEVER STORAGE SPACES in this well kept 3 bdrm. brick home. Many extras. Walkway to school for your little ones. \$81,900. Call Alice Pokkuda. 84-302

BE YOUR OWN BOSS Only local Answering Service available. Large clientele. Well established. Call Ev Patterson for info. 83-187

GENTLEMEN FARMER—50 ACRES, 45 minutes to Toronto, elegant 1,700 sq. ft. bungalow, excellent barn, Nancy Keiman 877-5165. 83-259

3.1 ACRES IN ERIN, just North of No. 7, nicely treed. OR A LOT 186 x 170 in Hillsburgh, backing onto Farmland. Call Ursula Zeldler for more info. 83-181 83-189

TRAFALGAR RD. & 401 AREA 38 Ac. of gently rolling prime land. Farmhouse & excellent Bank Barn. 5 Acres bush. Call Bette Stokes. 83-122

Nancy Keiman 877-4422	Wilma Marshall 877-8297	John Kroesen 877-2722	Cathy Parago 877-8438	Dave McMullen 877-8483	Audrey Davies 877-8367	Marg Parker 818-833-9181	Brenda Payton 877-7578
Sharon Pinkney 877-9579	Pat Hazenar 877-3548	Harry Burt 618-885-4579	Lorraine Riley 877-3927	Olga Fedun 877-5718	Herb Spitzer 877-8865	Ev Patterson 877-8886	Diana Arnold 818-833-2138
Karen Fishbein 877-8863	Murray Smith 853-8315			Ursula Zeldler 877-8368	Bette Stokes 877-4562	Dave French, Mgr. 457-8787	