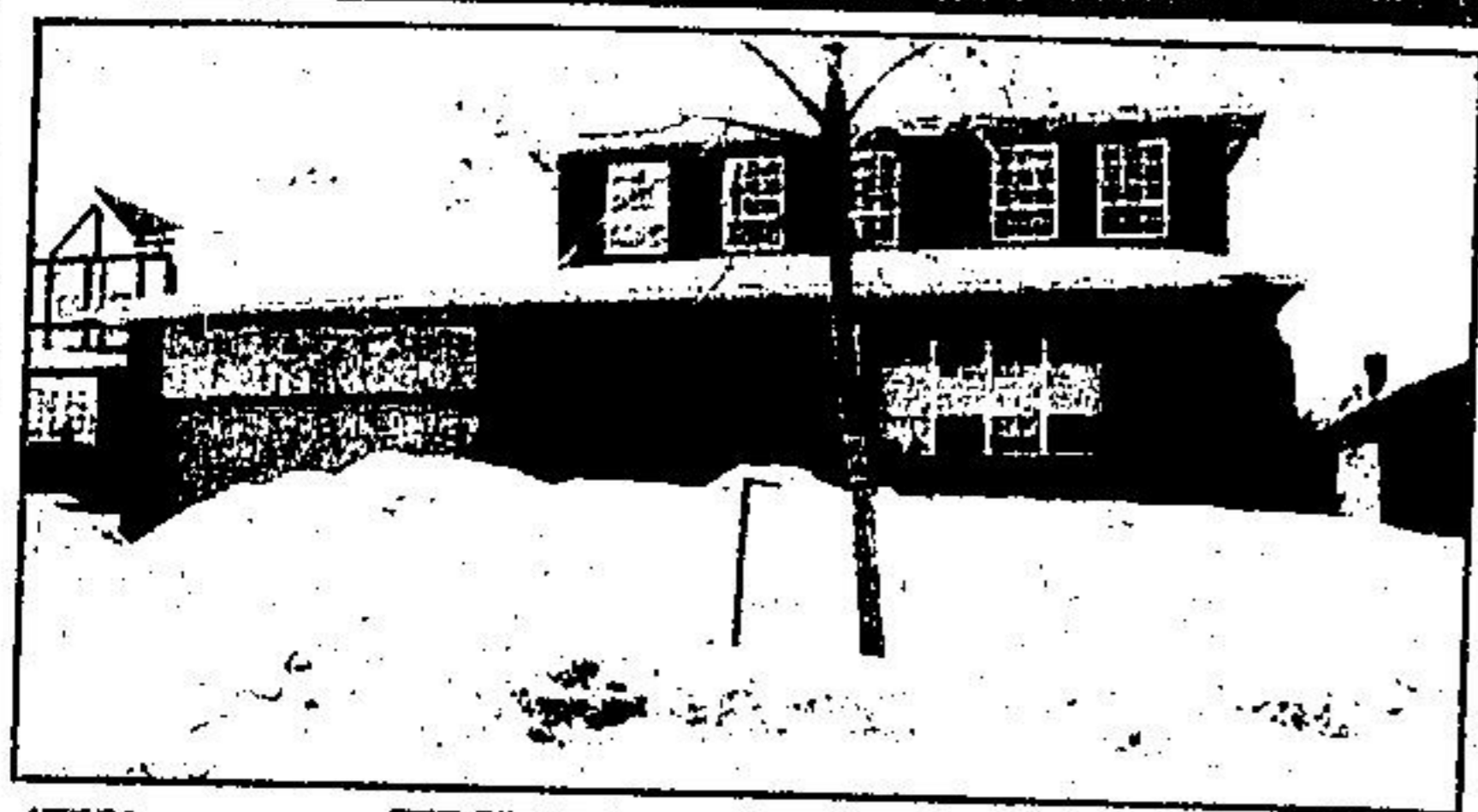


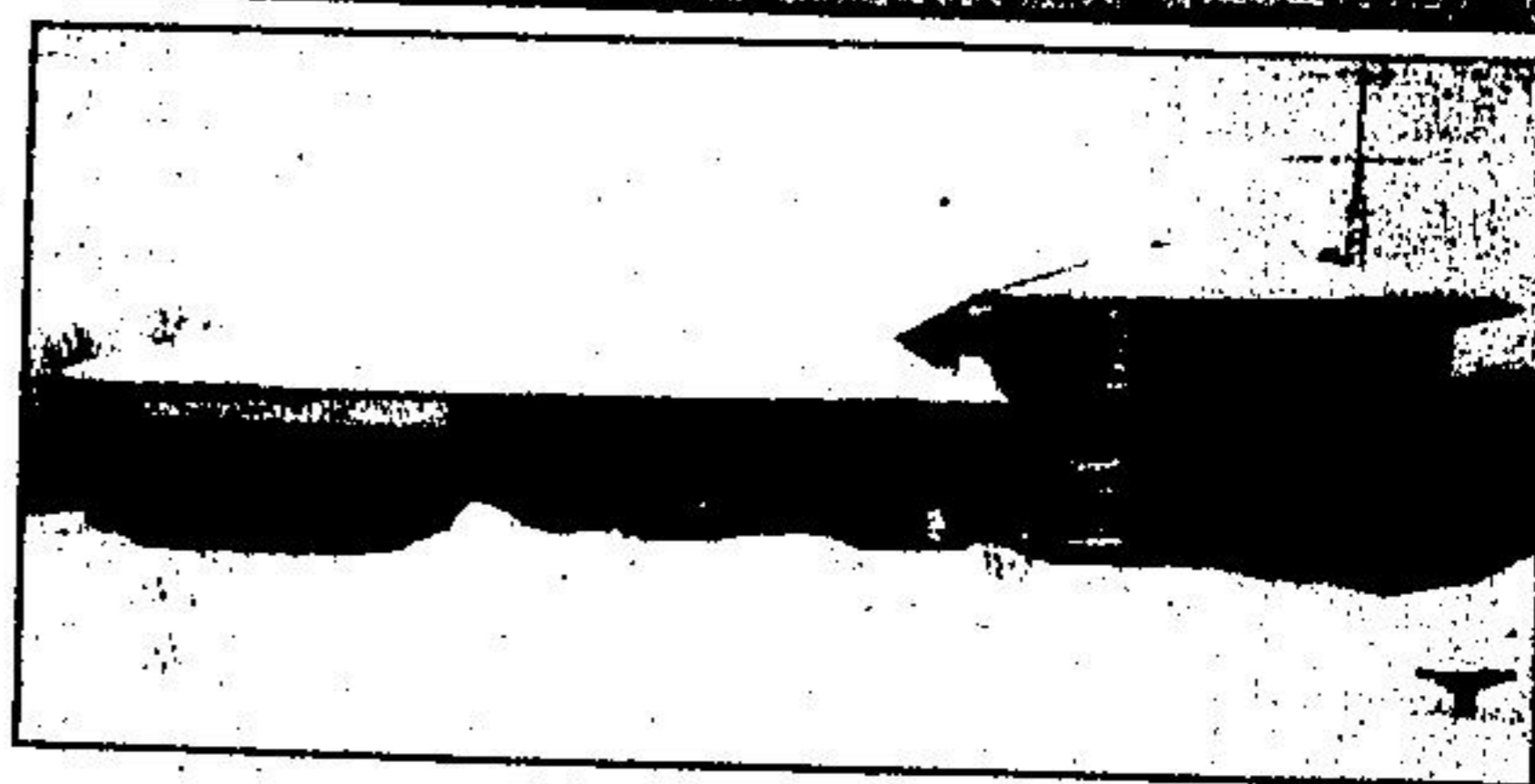
# HOMES



ARTICLES BY  
**JOHNSON & ASSOCIATES**  
REALTORS

## EXECUTIVE AREA

5 min. to GO train, 2,000 sq. ft. home, main floor family rm., w/fireplace, 4 bdrms., 3 baths, X-large fenced yard. \$128,900. Call Alica Pokluda. 83-226



**A.E. LePAGE**  
REALTOR

## BRAND NEW LISTING ON 3½ ACRES

Quality built custom home, plaster walls and ceilings. Main floor family room with fireplace. Located in an area of fine rural homes. \$108,900. (MLS) Call Joy Somerville, A.E. LePage Real Estate Services Ltd. 877-0173. 19-1



BARBARA  
JENNINGS  
ELLIS

## COME HOME TO WEBER DRIVE

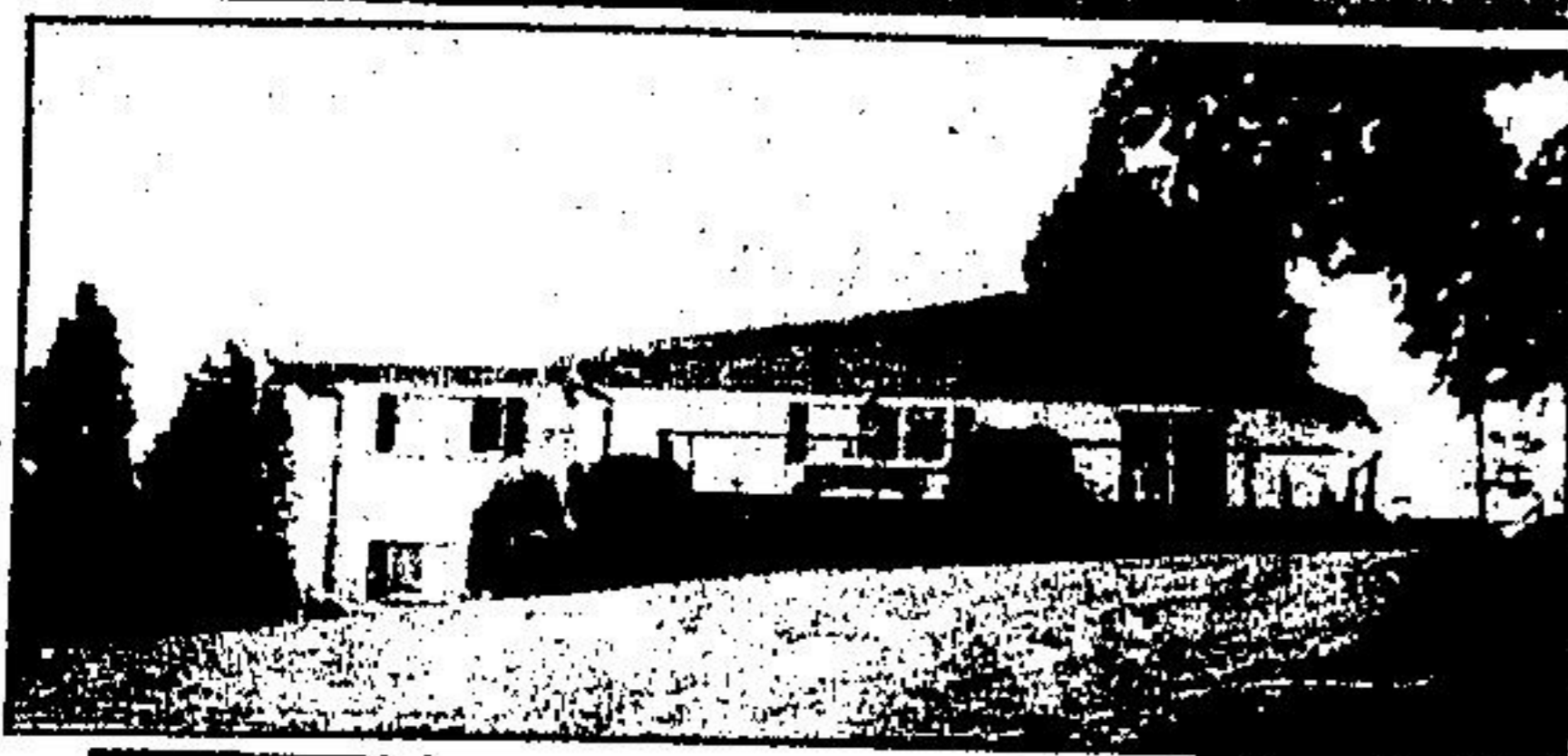
Savour the atmosphere of this cosy family home close to all amenities. Has rec room with fireplace and extra bedrooms, and only \$76,900! Call Barbara Jennings 877-6917.



**ROYAL CITY**

## YOU DON'T WANT TO RENOVATE FINISHED WITH SPECIAL CARE

Even to hand made moulding & trim. 8 rooms, 3 bedrooms, large pretty lot. Just steps to shopping. See it now with Alex or Barbara Glenn 877-5296. 4529



**A.E. LePAGE**  
REALTOR

## PANORAMIC 7 ACRES

Very unique and lovely brick side-split with formal living and dining rooms, new kitchen with centre island, built-in stove, main floor laundry area. 2 car garage plus workshop and storage room. For a personal inspection call Tillie Harvey, A.E. LePage Real Estate Services Ltd. 877-0173.



**JOHNSON**

## BEST BUY

Lovely ½ acre on the edge of town for the gardening enthusiast. Charming home includes 3 bedrooms, fireplace, separate dining room, eat-in kitchen, 1 ½ baths and rec room. Only \$69,900. Call G. ALEC JOHNSON LTD. at 853-2086.