

# Need girls only hockey in Acton..... (Continued from page 9)

are too many injuries and girls don't need to be put through that kind of punishment."

Carrie Gallant is the veteran female hockey player in Acton as she's been handling the puck for five years.

"It's really a lot of fun," said Carrie, "and I think I was the only girl in Acton playing hockey when I started."

Carrie said the boys treat her the same as they would any other team member, but she's not sure if she wants to play contact hockey or not.

As well as playing Pee-Wee, Carrie also dresses for the McKenzie-Smith school team. In both instances Carrie is playing with boys, but in the future Carrie said she would like to see a girls' team established in town.

Paul and Isobel Gallant said they're all for girls playing hockey, but until a team is formed the girls will just have to continue playing along with the boys.

"One problem we've come across," said Mr. and Mrs. Gallant "is prejudice against the girls from some parents and the ruling that doesn't allow girls to play rep hockey really stinks."

"It's not the boys that mind girls playing, it's some of the parents. Although, since more and more girls are coming into the league, people are getting used to the idea," they said.

Angela Yaworski is a Novice rookie and she said she got into hockey when a friend, with all the equipment, decided not to play hockey this season. Angela jumped at the chance and hasn't regretted playing hockey one bit.

She was another girl who found the boys treat her much the same as the rest of her teammates and she thinks that having three years of figure skating has really helped her play better hockey.

So far this season Angela has chucked up five assists and two goals for her team and she said she'd really like to play again next season.

Angela's father, Gene, said Angela has always been a tomboy, first playing road hockey with the kids on the street.

"When Angela first started playing hockey it seemed there were a few parents and coaches against it, but now I think noone seems to mind," said Mr. Yaworski.

"I'd like to see a girls' team established, but if that isn't possible I don't think the girls should be forced to quit because of the contact in Bantam."

"I really think that if a girl wants to play contact hockey then she should be allowed to. After all if the equipment protects the boys, why shouldn't it protect the girls just as well," remarked Yaworski.

Margie Parker is another Acton girl who's

been an avid hockey fan for four years now, and as well as playing Legion Hockey she has been playing on the McKenzie-Smith school team. More recently Margie has been playing for a Burlington girls' squad in numerous tournaments during the year.

Margie says she likes playing hockey with boys, but for the future she too would like to see a girls' team started in Acton.

"I'll play hockey as long as I can," said Margie who is also following NHL hockey closely.

Margie also found the boys she plays with treat her the same as anyone else on the team and since her father coaches her team she receives all kinds of encouragement.

As her father coaches and one of her best friends, Carrie Gallant, plays hockey, Margie became interested in playing the sport after several years of watching.

"The only thing I find unfair is the fact I can't play rep. hockey," stated Margie. "I've wanted to try out for the team, but what's the use when I know I can't play even if I do make it."

All in all it seems as though most of the girls playing hockey find the sport a challenging and fun pastime and with the enthusiasm which most of the girls display, it shouldn't be long before there is a girls' team in Acton.

More and more women are finding they



DIANA FREIS



CARRIE GALLANT



SUSAN APLEYARD

can keep up with men in sports and if many of the parents have their way the OMHA will be changing a few of its rules regarding girls playing hockey.

Who knows, maybe the future will even hold a pro league for women.



ANN MARIE KINNON



CAROLINE KINNON



JODY COLEMAN



KIM HAGAN



ANGELA YAWORSKI



MARGIE PARKER

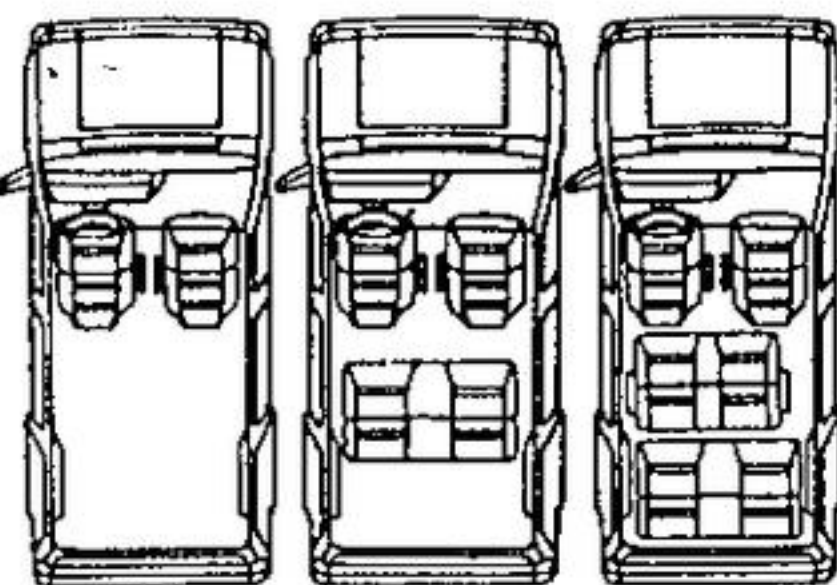
# Chrysler MagicWagons

## You've got to drive them to believe 'em.

Introducing a whole new way to get around. The revolutionary front-wheel-drive Dodge Caravan and Plymouth Voyager

**BELIEVE THE VERSATILITY.**

Just like magic, Dodge Caravan and Plymouth Voyager are three feet shorter than a big conventional station



wagon yet they give you up to 30% more space. They have room for two, five or seven adults or up to 125 cubic feet of carrying space.

The new Chrysler technology has created versatility GM, Ford and the imports just haven't matched.

**BELIEVE THE ECONOMY.**

A little magic goes a long way.

**8.0L/100 km CITY/HWY**

**35 MPG** Comparative Rating based on Transport Canada test methods for models equipped with 2.2 litre engine and 5-speed manual overdrive transmission. Your actual fuel consumption may vary.

If you've filled up recently you'll notice gas prices aren't exactly going down. So it's reassuring to know that Dodge Caravan and Plymouth Voyager's fuel economy is incredible. Young growing families will appreciate the versatile, economical ways of MagicWagon.

**BELIEVE THE HANDLING.**

Front-wheel-drive MagicWagons will pull you through the toughest winters this country has to offer. They handle

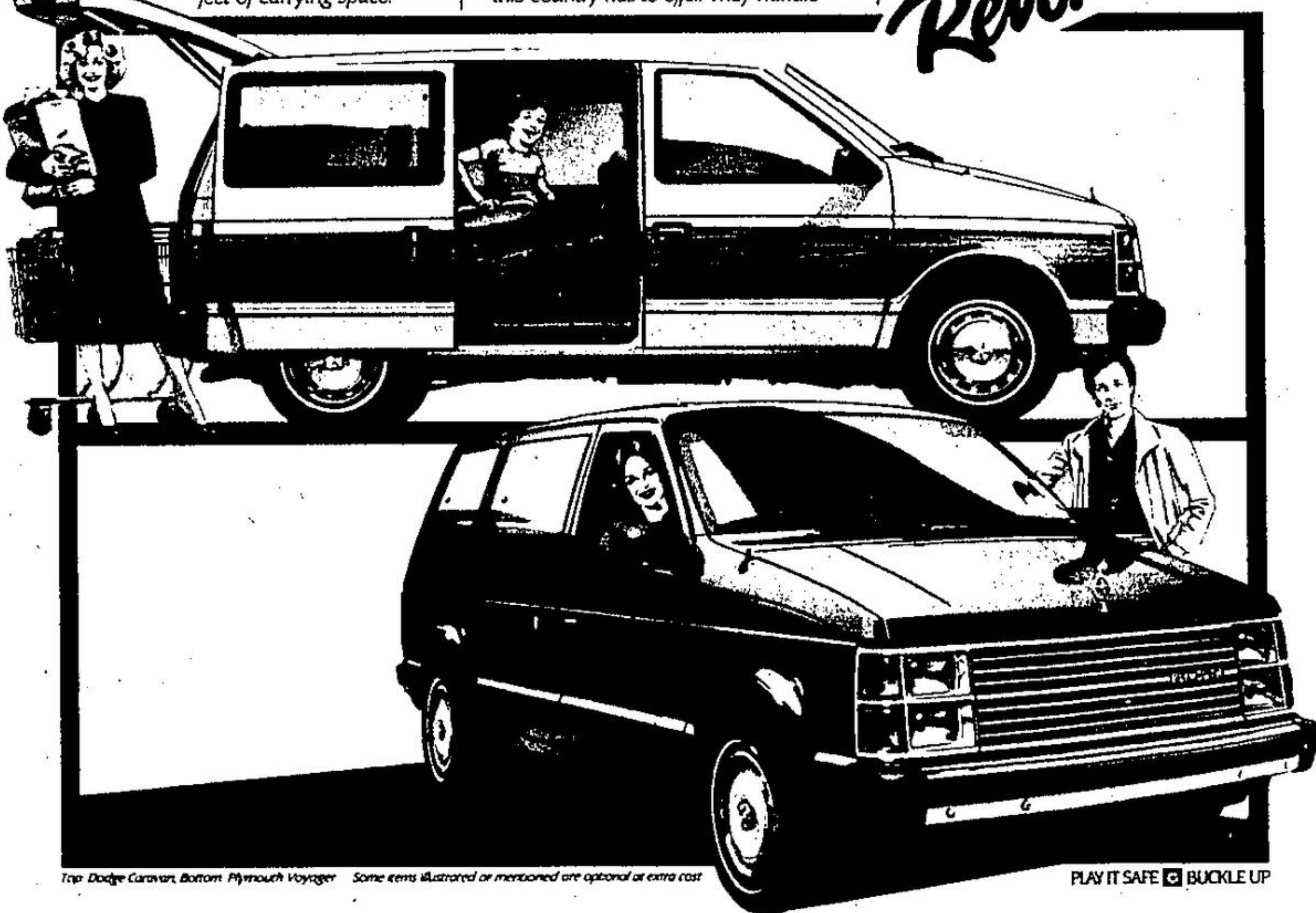
like a car, park like a compact and fit easily into a garage.

**BELIEVE THE BEST PROTECTION PLAN.**

It's easy to believe in magic when it's protected for 5 years or 80,000 km. Chrysler backs every MagicWagon that way: engine and powertrain protection; outer panel rust perforation protection. No other wagon gives you that much protection. That's magic that lasts.

Check the advantages of leasing Caravan and Voyager. Ask about Chrysler LeaseAbility.

*Join the Chrysler Revolution!*



Top: Dodge Caravan, Bottom: Plymouth Voyager. Some items illustrated or mentioned are optional at extra cost.

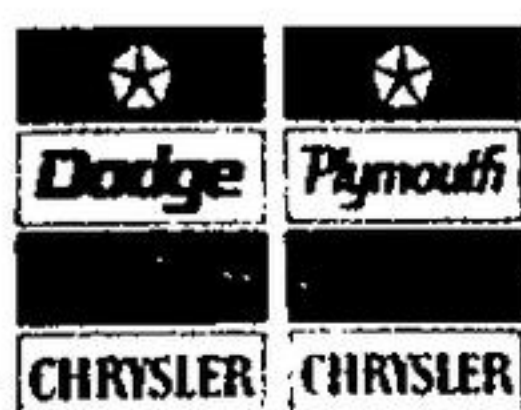
PLAY IT SAFE BUCKLE UP

## YOU ARE WANTED BY GEORGETOWN BASEBALL ASSOC.

In order that we can provide baseball to the youth. Without volunteers the program can't operate. Your application to coach or manage a team in 1984 should be sent by January 20th to:

**GEORGETOWN BASEBALL ASSOCIATION**  
P.O. BOX 238  
GEORGETOWN, ONTARIO L7G 4Y5

Questions? Please call 877-9176



# DODGE CARAVAN PLYMOUTH VOYAGER