

SOLD

THE SIGN OF PERFORMANCE

877-5165

247 Guelph Street
Georgetown



Diana Arnold with this week's mortgage rates.

The mortgage rates quoted below are prime rates and are available to qualified customers on top quality homes in good locations.

Please feel free to call me for additional information.

TERM -	1 Yr.	2 Yr.	3 Yr.	4 Yr.	5 Yr.
RATE -	10%	11%	12	12%	12%



OLGA FEDUN



URSULA ZEIDLER



NANCY KELMAN



JOHN KROEZEN



SHARON PINKNEY



KAREN FISHBEIN



CATHY PEREGO



PAT HAMMER



MURRAY SMITH



DAVE McMULLEN



HARRY BURT



LORRAINE RILEY



ALICE POKLUDA



AUDREY DAVIES



HERB SPITZER



BETTE STOKES



BRENDA PAYTON



EV PATTERSON

THIS WEEK'S SELECTION OF AFFORDABLE HOMES



BEAUTIFUL HOME WITH A BEAUTIFUL VIEW. Executive living on 1 plus acre offering you a 4 bedroom, 3 baths with lots of extras, including town water. Call Pat Hammer.

83-183



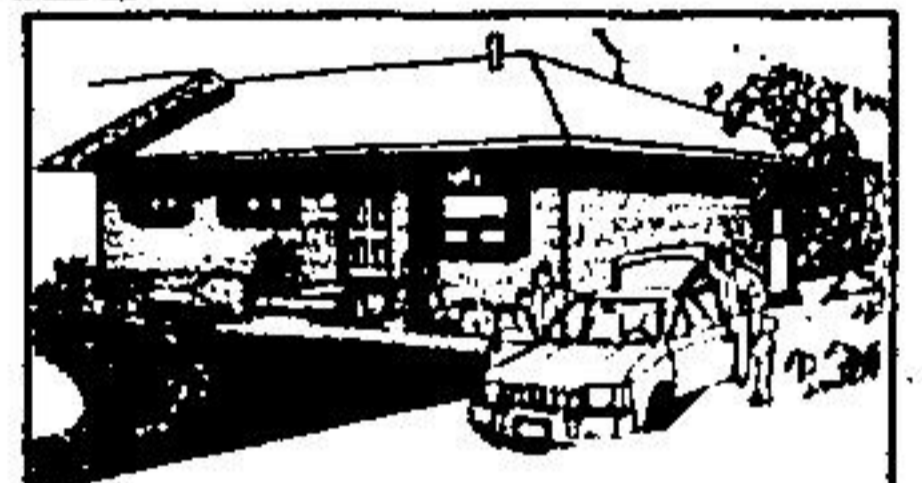
MOVE UP TO COMFORT. Mn. flr. Family Rm., Rec. Rm., 4 Bdrms., Matr. has 2 pc. bath and walk-in closet. \$98,900. Call Nancy Kelman. After hours 877-4422.

83-231



MUST SELL—\$22,900. 3 bedroom mobile home in Willow Park, large 33 x 100 ft. lot. Call Sharon Pinkney 877-5256.

83-215



LAST CHANCE FOR \$3,000 GRANT! Quality Bungalows, 60' x 200' lots. Choice of broadloom, cabinets, etc. \$69,900. Call Diane Arnold 877-5165.

83-153



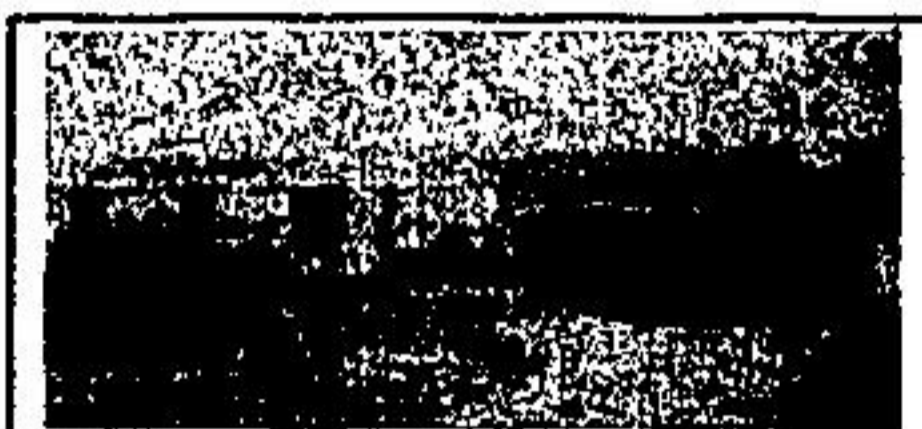
LOAFERS LAKE BRAMPTON. \$6,000 DOWN. No Maintenance Fees! 3 bdrm., freehold townhouse, mn. floor family rm., walkout to fenced yard. Only \$68,900! Call Olga Fedun at 877-5165.

83-238



COUNTRY SETTING IN TOWN, Silver Creek flowing through 1 acre of trees and surrounding inground pool, walkways and deck, 4 bdrms., rec. rm., family rm., 2 fireplaces—don't miss this home with many other extras at only \$138,900. Call Herb Spitzer 877-5165.

83-229



NEW LISTING—1 ACRE Main Floor Family Room, Dble. garage, Florida rm., 3 bdrms., Only \$112,900. Call Ev Patterson for more information.

83-236



VENDOR ANXIOUS! Move in before Christmas! Price reduced to \$69,900. 4 bdrms., solid brick bungalow, quiet crescent location. Finished R.R., 2 baths, large eat-in kitchen, spacious L.R. and dining rm. For more information call Ursula Zeidler 877-5165.

83-219



REDUCED TO \$78,900. Detached 3 plus 1 bedrooms, finished R.R. with fireplace and bar. Large fenced lot. Call Alice Pokluda.

83-181



EPOON FARM IN "HORSEY AREA". Opportunity is yours! To own this 20 acre farm. Features brick home w/8 apts., bank barn w/40 box stalls, several paddocks and 1/2 mile stone dust track. Excellent monthly income! Asking \$189,900. Call Harry Burt.

83-171



CENTURY STONE HOUSE on a beautifully treed acre lot. Many features include stone fireplace, barn at rear and much more. Asking \$107,900. Ask for Audrey Davies 877-5165.

83-218



MUST SELL—Vendor will look at all offers. Park district, Post-Victorian, 3 bdrm. Antique Lover's Delight. Asking \$84,900. Call Brenda Payton, 877-5165 or 7578.

83-237

WE HAVE MANY OTHER EXCITING HOMES FROM WHICH TO CHOOSE. OUR AGENTS WOULD BE HAPPY TO PROVIDE YOU WITH THE DETAILS. PLEASE CALL.

- | | | | | | | | | | | | | | | | | |
|-----------------------|-----------------------|---------------------|-------------------------|------------------------|-------------------------|-------------------------|------------------------|---------------------|-------------------------|-----------------------|-----------------------|------------------------|------------------------|-----------------------|---------------------------|----------------------------|
| Nancy Kelman 877-4422 | Cathy Peregó 877-5165 | Olga Fedun 877-5165 | Ursula Zeidler 877-5165 | Dave McMullen 877-1178 | Harry Burt 819-886-8879 | Lorraine Riley 877-3827 | Audrey Davies 877-5257 | Olga Fedun 877-5165 | Ursula Zeidler 877-5165 | Herb Spitzer 877-5165 | Bette Stokes 877-5165 | Alice Pokluda 877-5165 | Brenda Payton 877-7578 | Ev Patterson 877-8888 | Diane Arnold 819-833-2138 | Dave French, Mgr. 467-8787 |
|-----------------------|-----------------------|---------------------|-------------------------|------------------------|-------------------------|-------------------------|------------------------|---------------------|-------------------------|-----------------------|-----------------------|------------------------|------------------------|-----------------------|---------------------------|----------------------------|