



PEACEFUL COUNTRY LIVING! Hillsburgh, the 5.3 Acres is hard to beat. Geese and Fish in 2 1/2 Ac. Pond. Steel barn, paddock and pasture field, modest 7 rm. home, neat and tidy \$154,000. Interested? Call Harry Burt 83-123



ERIN FARM—NEAR HIGHWAY! On Hardtop, 2 1/2 story brick home, divided into 6 apts. Large bank barn, w/40 box stalls, nearly all rented monthly 70 Acres, 1/2 mile track, fenced paddocks, etc. \$189,000. Interested? Call Harry Burt 83-171



VICTORIAN BRICK FARM HOME Erin-94 Acres, 60 tilld, balance pasture with bush and stream. Usual farm bldgs. set well back. Steel Barn 28' x 88', Hwy frontage. Asking \$199,000. Anxious—call Harry Burt. 83-98



JUST BELOW 401—STREETSVILLE Lovely 3 Br. multi-level semi. Large Kitchen, w/wr out to fenced yard. 2 baths, finished Family Rm. Home shows like a dream. Just reduced to \$74,900. Call Ursula Zedler 83-168



PRIVACY AND LOCATION Exec 5 bdr. rancher on 105 Rolling Acres. Many features, Pond site, Barn, 2 F.P., 4 baths, 3 walk outs and much more. Asking \$229,900. Ask for Audrey Davies. 83-200



WANT TO BUILD YOUR OWN HOME? 3.1 Acres, about 4 miles N of No. 7, in Erin Township. Building permit available, driveway is in, some bush at rear, clear in centre, with creek along side property. Call Ursula Zedler. 83-191



LARGE 3 BED TOWNHOUSE END UNIT WITH WRD to patio, garage, new Bath, nicely decorated, just move in, Fridge & stove incl. Close to City Centre, \$51,900. Call Dave McMullen for more info. 83-201



BEAUTIFUL VIEW FROM THIS HILLTOP ACRE Right in Georgetown. Executive Tudor home, features 4 bed rooms, 3 baths, 2 fireplaces, heat pump and priced right at \$139,900. Call Pat. 83-183



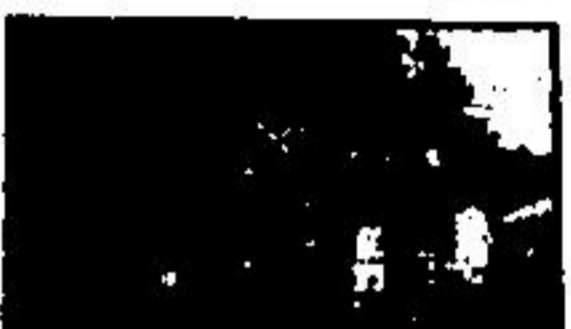
VILLAGE OF HILLSBURGH BUILDING 107 165 x 170 fenced, backs on to Farm Land, fresh spring on property. Mtg. available. \$73,900. Call Ursula Zedler 83-169



EXCITING NEW LISTING Featuring M.B. with sitting area overlooking L.R., D.R., F.P., Ceiling fan, glass doors. M.F. Laundry. Should be seen. Only \$87,900. Call Alice Pokuda. 83-198



LOOKING FOR A STARTER HOME? 4 bedroom semi updated plumbing and wiring new roof. Full fenced yard. Asking \$48,900. Ask for Audrey Davies. 83-140



GLEN WILLIAMS Great starter or retirement home. New roof. Plumbing and alum. trim, large private treed lot. Asking \$53,900. Ask for Audrey Davies. 83-194



STAY COOL—WITH CENTRAL AIR All appliances and drapes and rugs. Can have in-law suite, great possibilities on this Brick Bungalow. Call Ev Patterson. 83-137



DON'T MISS THIS HOME It has all the extras, 2 baths, 4 bedrooms, Rec. Rm., stone fireplace, bar, extra large lot, trees, \$93,900. Call Herb Spitzer-877-5165 83-199



\$169,000 COMPLETELY FURNISHED 2 room trailer with extras. Move right in. Vendor will hold mortgage to qualified purchaser. Call Murry Smith. 83-202



LARGE TREED LOT AND A LOVELY 4 BEDRM. BACKSPLIT with main floor family room with F.P. and walk out, 2 baths and much more. Asking \$87,900. Ask for Audrey Davies. 83-179



FOUR BEDROOM HOME Formal dining, 2 bathrooms, Rec. Rm. started with brick fireplace and walkout to park setting, immediate possession. \$94,500. Call Herb Spitzer 877-5165. 83-167



REDUCED TO \$71,900—1/2 acre country home, features, 3 bedrooms, large kitchen, done in pine. Backs onto woods. Ask for Audrey Davies. 83-193



BARGAIN! BARGAIN! Where can you buy a 4 bed. brick bung with a huge Rec. Room & Fireplace for only \$71,900? Call me, Olga at 877-5165. 83-150



SOUTH OF TERRA COTTA ON PAVED ROAD Bright & Sunny, 3 br. ranch bungalow, 1/2 Acre, 2 fireplaces w/o to Deck from Dining Rm. Call Ursula Zedler to show you. 83-170



TRAFALGAR RD. COUNTRY ESTATE! 2778 Sq. Ft. 9 yr. old beauty. Everything is New! On 1 acre. Call Me for all the Details! Olga at 877-5165. 83-146



\$12,900 LOOK AN ALMOST NEW 36' GLOBESTAR incl. fridge, stove and furniture. Imm. possession. Call Alice Pokuda. 83-161



SUPER 3 BDR. SIDESPLIT Large eat in kitchen, private treed lot. Single car garage and more. Asking \$69,900. Ask for Audrey Davies. 83-189



LOCATION, LOCATION, LOCATION! Your own store and apartment for only \$39,900, full price. Call Herb Spitzer 877-5165 83-09



CENTURY HOME in Quiet Village 3 Bedrooms. Many Renovations completed super Financing at 12 1/2 x 3 yrs. Lorraine Riley. 82-162



REDUCED \$37,900 MUST SELL Large estate lot, Many extras make it a point to see this one. Call John Krozen 877-5165. 83-152



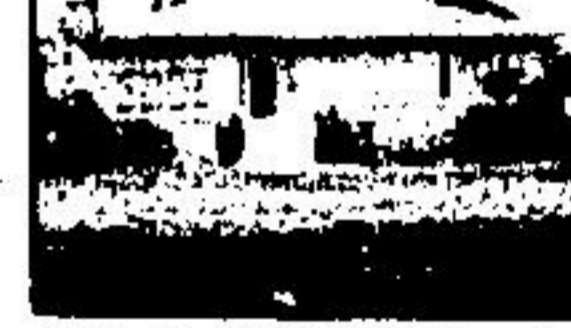
SPOTLESS "A" MODEL TOWNHOUSE \$59,900, finished family rm. Mtg. at 11 1/2% - 1986 - Call Ev Patterson for viewing. 83-193



ONLY \$68,900—LOVELY 2 STOREY 4 bdr home, built-in appliances and RR with fireplace. Call Ev Patterson for more info. 83-197



REDUCED—\$68,900—3 bdr brick bungalow, new roof and windows. Many other features Call Ev Patterson for viewing. 83-182



LOTS OF ELBOW ROOM—in the Maintenance Free 3 bed. Brick Bung. with Huge Rec. Room. Immediate Possession! \$76,900 Olga 877-5165 83-149



\$24,900 BOWLING LOT Featuring mature trees, located on dead end street in country surrounding. Call Alice Pokuda. 82-96



MOVE TO AN END UNIT FOR ONLY \$68,900 11 1/2% 1st Mtg. due 1988, call Herb Spitzer 877-5165 83-176



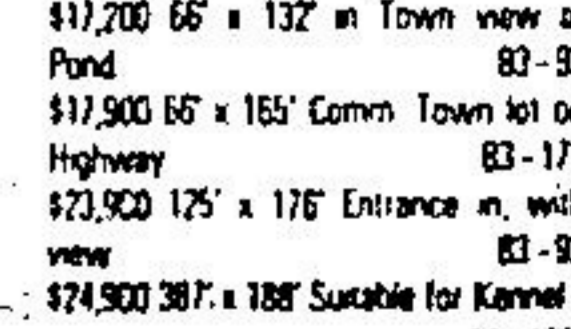
PRICED TO SELL—\$67,888 4 br., pool, large fenced lot, fireplace, custom built. Call Ev Patterson for viewing. 83-164



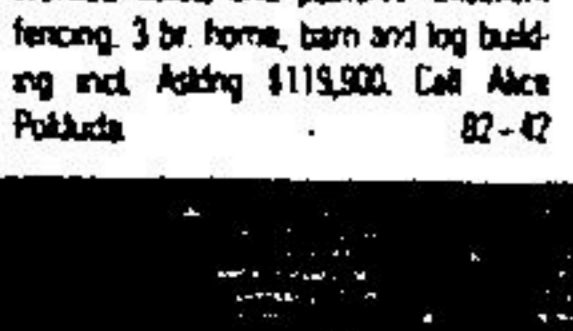
75 ACRES VACANT LAND IN VERY SCENIC AREA 17 mins. from Georgetown. Perfect spot to build your dream home. Asking \$114,900. Call Alice Pokuda. 82-105



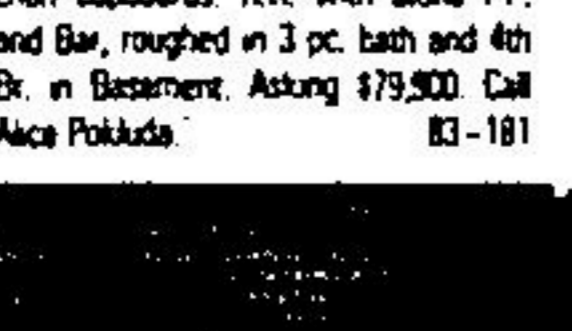
11 UNIT MOTEL REDUCED TO SELL Only \$175,000. Statements available. Call John Krozen 877-5165 83-186



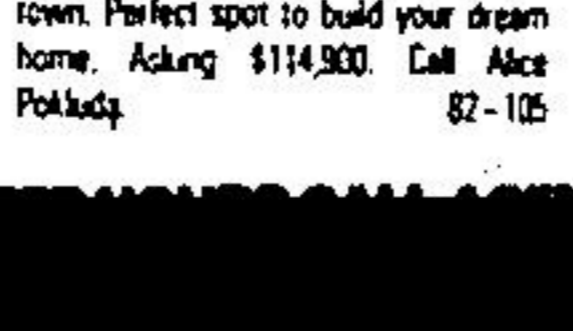
2 1/2 ACRES—OVERLOOKING PONDS Driveway in, ready for your dream home. Owner will build, asking \$69,900. Call Herb Spitzer - 877-5165 83-133



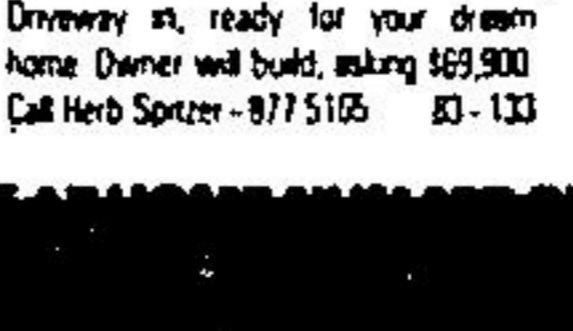
THINK BIG. VERY SCENIC 162 ACRE FARM with maple forest, pond, worked fields, and pastures. Excellent fencing. 3 br. home, barn and log building incl. Asking \$119,900. Call Alice Pokuda. 82-42



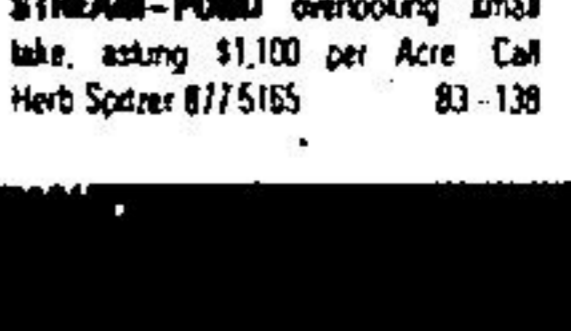
EXCELLENT LOCATION Large fenced yard, home features newly installed kitchen cupboards, RR, with stone F.P. and Bar, roughed in 3 pc. bath and 4th Br. in Basement. Asking \$79,900. Call Alice Pokuda. 83-181



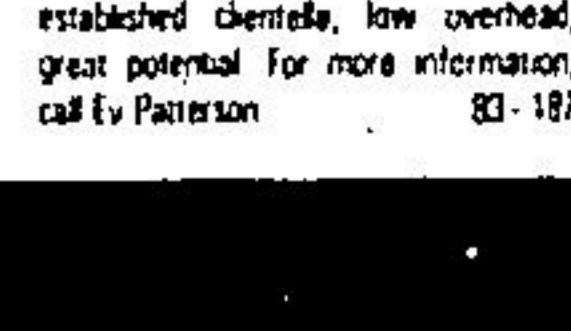
325 ACRES—TREES—HILLS—STREAM—POND overlooking small lake, asking \$1,100 per Acre. Call Herb Spitzer 877-5165 83-138



LOCAL ANSWERING SERVICE Well established clientele, low overhead, great potential. For more information, call Ev Patterson. 83-187



\$17,200 66' x 132' in Town view of Pond. 83-93



\$17,900 66' x 165' Comm. Town lot on Highway. 83-172

\$23,900 125' x 176' Entrance in, with view. 83-92

\$24,900 387' x 188' Suitable for Kennel. 83-170

\$56,900 41 Acres, 1/2 available, 1/2 bush, with cold stream. 83-145

Call Harry Burt for details.