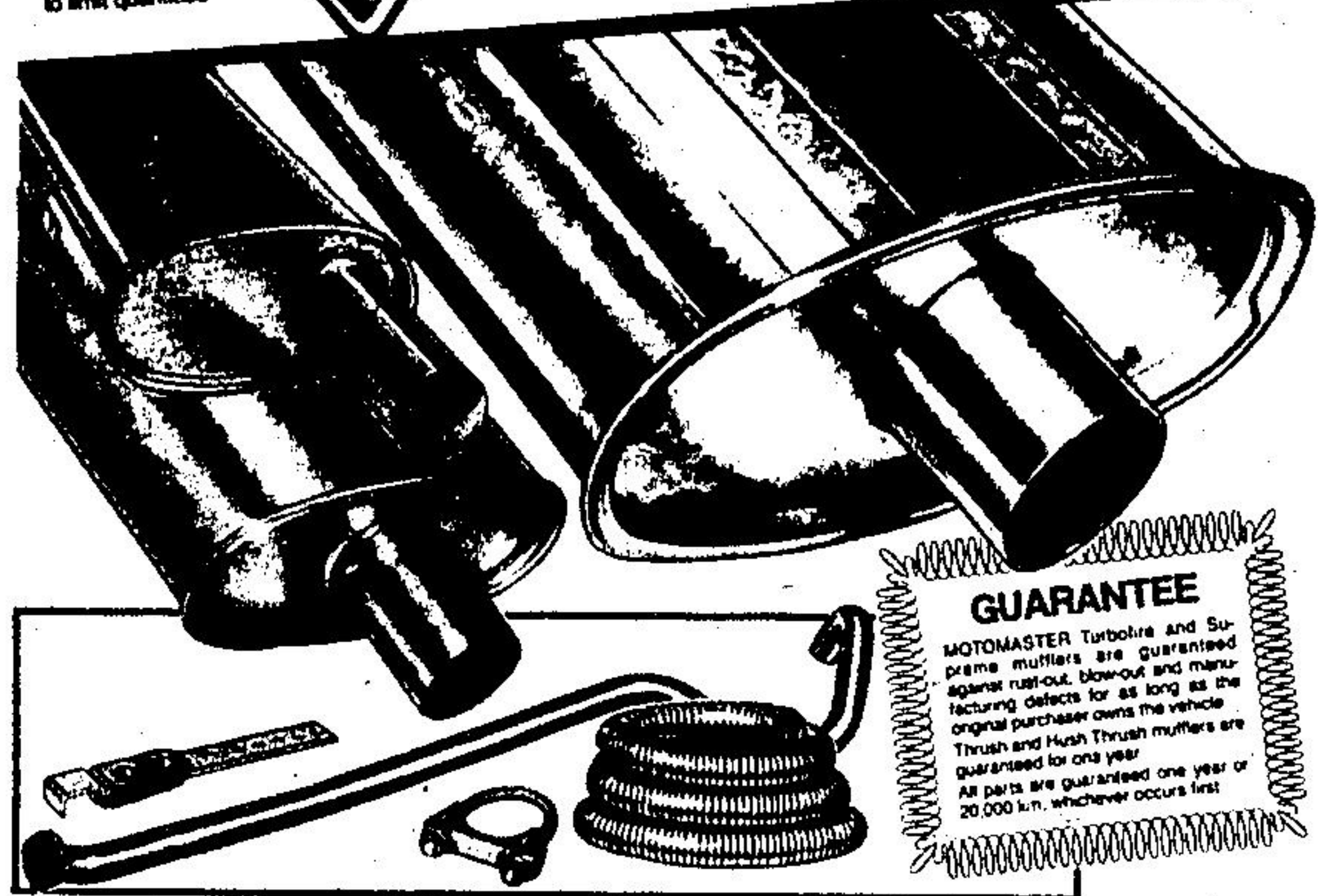




# Mileage makers

On sale to Saturday, Oct. 23rd while quantities last

Regular prices shown are our everyday low prices. We reserve the right to limit quantities



## 20% off All mufflers and parts

You know Canadian Tire is the place to shop for top-quality parts and expert service. Now, for a few days only, you can save 20% on all mufflers: Turbofire, Supreme, Thrush and Hush Thrush. PLUS you save 20% on all parts: exhaust and tailpipes, clamps, brackets, flexible metal tubing, flanges, etc. PLUS you save 15% on installation.

## 15% off installation

If you don't have the tools, the time or the space to do the job yourself, bring your vehicle to us and save 15% on installation. Labour guaranteed 90 days.



**GUARANTEE**  
MOTOMASTER Turbofire and Supreme mufflers are guaranteed against rust-out, blow-out and manufacturing defects for as long as the original purchaser owns the vehicle. Thrush and Hush Thrush mufflers are guaranteed for one year. All parts are guaranteed one year or 20,000 km, whichever occurs first.

Come in now for a no-charge exhaust inspection

Winter Express Glass Radial			
Wholesale Size	Product Number	Regular price each	Savings per pair
P155-80R12	021509	48.95	12.00
P155-80R13	031509	52.95	14.00
P155-80R14	031509	56.95	16.00
P155-80R15	031509	60.95	18.00
P155-80R16	031509	64.95	20.00
P155-80R17	031509	68.95	22.00
P155-80R18	031509	72.95	24.00
P155-80R19	031509	76.95	26.00
P155-80R20	031509	80.95	28.00
P155-80R21	031509	84.95	30.00
P155-80R22	031509	88.95	32.00
P155-80R23	031509	92.95	34.00
P155-80R24	031509	96.95	36.00
P155-80R25	031509	100.95	38.00
P155-80R26	031509	104.95	40.00
P155-80R27	031509	108.95	42.00
P155-80R28	031509	112.95	44.00
P155-80R29	031509	116.95	46.00
P155-80R30	031509	120.95	48.00
P155-80R31	031509	124.95	50.00
P155-80R32	031509	128.95	52.00
P155-80R33	031509	132.95	54.00
P155-80R34	031509	136.95	56.00
P155-80R35	031509	140.95	58.00
P155-80R36	031509	144.95	60.00
P155-80R37	031509	148.95	62.00
P155-80R38	031509	152.95	64.00
P155-80R39	031509	156.95	66.00
P155-80R40	031509	160.95	68.00
P155-80R41	031509	164.95	70.00
P155-80R42	031509	168.95	72.00
P155-80R43	031509	172.95	74.00
P155-80R44	031509	176.95	76.00
P155-80R45	031509	180.95	78.00
P155-80R46	031509	184.95	80.00
P155-80R47	031509	188.95	82.00
P155-80R48	031509	192.95	84.00
P155-80R49	031509	196.95	86.00
P155-80R50	031509	200.95	88.00

SEASONMASTER MARK II				
Wholesale Size	Product Number	Regular price each	Savings per pair	Savings per pair
P155-80R12	021527	48.45	12.00	12.00
P155-80R13	031527	52.45	14.00	14.00
P155-80R14	031527	56.45	16.00	16.00
P155-80R15	031527	60.45	18.00	18.00
P155-80R16	031527	64.45	20.00	20.00
P155-80R17	031527	68.45	22.00	22.00
P155-80R18	031527	72.45	24.00	24.00
P155-80R19	031527	76.45	26.00	26.00
P155-80R20	031527	80.45	28.00	28.00
P155-80R21	031527	84.45	30.00	30.00
P155-80R22	031527	88.45	32.00	32.00
P155-80R23	031527	92.45	34.00	34.00
P155-80R24	031527	96.45	36.00	36.00
P155-80R25	031527	100.45	38.00	38.00
P155-80R26	031527	104.45	40.00	40.00
P155-80R27	031527	108.45	42.00	42.00
P155-80R28	031527	112.45	44.00	44.00
P155-80R29	031527	116.45	46.00	46.00
P155-80R30	031527	120.45	48.00	48.00
P155-80R31	031527	124.45	50.00	50.00
P155-80R32	031527	128.45	52.00	52.00
P155-80R33	031527	132.45	54.00	54.00
P155-80R34	031527	136.45	56.00	56.00
P155-80R35	031527	140.45	58.00	58.00
P155-80R36	031527	144.45	60.00	60.00
P155-80R37	031527	148.45	62.00	62.00
P155-80R38	031527	152.45	64.00	64.00
P155-80R39	031527	156.45	66.00	66.00
P155-80R40	031527	160.45	68.00	68.00
P155-80R41	031527	164.45	70.00	70.00
P155-80R42	031527	168.45	72.00	72.00
P155-80R43	031527	172.45	74.00	74.00
P155-80R44	031527	176.45	76.00	76.00
P155-80R45	031527	180.45	78.00	78.00
P155-80R46	031527	184.45	80.00	80.00
P155-80R47	031527	188.45	82.00	82.00
P155-80R48	031527	192.45	84.00	84.00
P155-80R49	031527	196.45	86.00	86.00
P155-80R50	031527	200.45	88.00	88.00

\*Because of production delay steel-belted will be substituted to extent of inventory

## Save \$15.00 to \$25.00 per pair

**Glass-belted radial for positive, deep-snow traction**  
WINTER EXPRESS provides vital drive-wheel traction essential in our northern snow areas. Smooth-riding combination of a polyester casing and 2 glass belts matches the construction of many new car tires. Can be paired with steel-belted radials in other wheel positions. Self-cleaning lugs.

**Glass all-season radial for ice, snow or rain traction**  
SEASONMASTER Mark II takes you through the seasons - regardless of road conditions or temperature changes. Road-cushioning polyester casing and 2 tough, glass belts provide top all-season performance. Specially compounded tread maintains resiliency and tractability. Performance rating 55,000 km.

**5-year unlimited mileage road-hazard guarantee**



## Save 19% to 40%

Front carpeted mats **12.95** pair  
Most popular colors

Ⓛ For front wheel drive (Reg \$18.95) or compacts (Reg \$19.95). Front full-size. (Reg \$26.95) Rear for all. (Reg \$14.95)

Deep-pile covers **16.95** each  
Regular \$24.95

Ⓛ High-pile Furrelle Orion acrylic fibre. For bench, regular or hi-back bucket. Black, Blue, Burgundy, Camel or Silver.

Truck bench cover **23.95**  
Regular \$31.95

Ⓛ Five pockets including one for gun or fishing rod. For 1/2, 3/4 or 1-ton. Tough polypropylene fabric. Black or Brown trim.

Aluminum shovel **6.44**  
Regular \$7.99

Ⓛ Compact, light, rugged with wooden D-grip handle. Fits car trunk for winter emergencies. Approximately 33" overall.



Tires and a lot more  
**MURRAY LAWTON LIMITED**  
238 Guelph Street, Georgetown  
Parts and Tires 877-5147  
Service 877-5148

