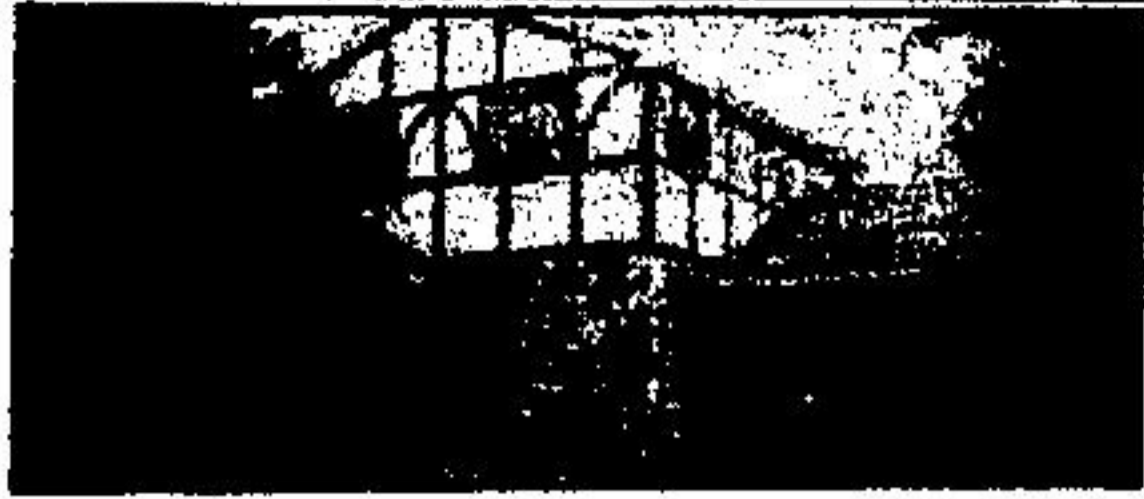


**Canada Trust Realtor**



**COUNTRY WITH CHARACTER**

Stone & tudor style side split with unique floor plan. Huge beamed country kitchen, 4 bedrooms, family room & fireplace, plus 2 car garage. Very private treed country lot. Located in Halton Hills about 1 mile from No. 7 Hwy. Asking \$105,000.



**NEWLY MARRIED'S SPECIAL**

Plus \$3,000. Gov. Grant together with assuming present first mortgage. 3 bedroom brick sidesplit. Beautiful eat-in kitchen and cosy fireplace in the living room. Asking only \$85,900.



**LOTS OF POTENTIAL**

Scenic farm of about 49 acres close to Georgetown. Victorian brick 2 storey home needs restoration. Bank barn, excellent steel drive shed, about 32 acres workable. Asking \$95,000.



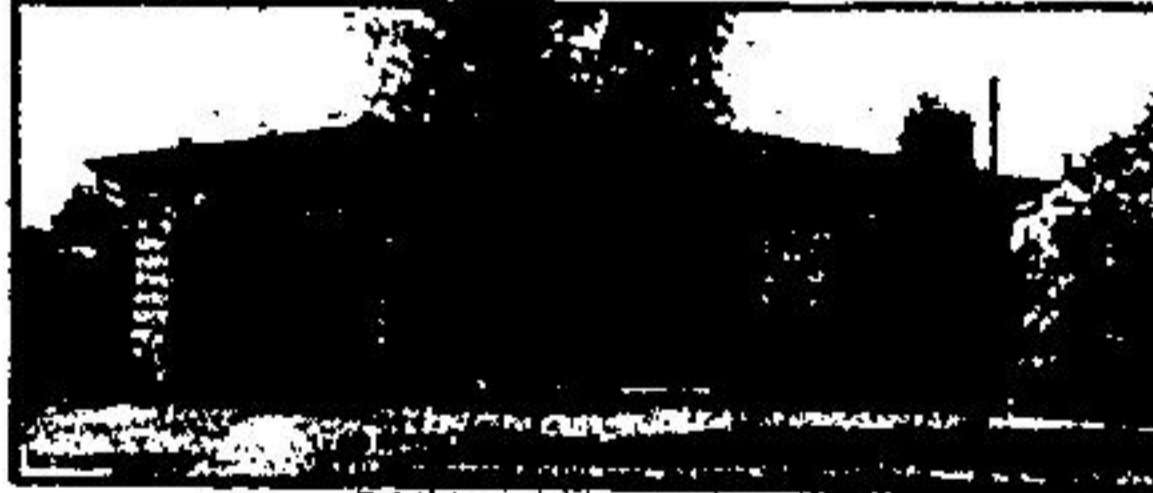
**COUNTRY LIVING AT 10 1/2%**

Over 2 acres close to Georgetown. Terrific landscaping with even a spring-fed swimming pond. Very smart 4 bedroom bungalow with 2 car garage, family room with fireplace and -- Lucky You -- priced reduced to \$117,000.



**CLASSY COMMUTING**

Hornby Park area, superb custom bungalow, first time offered due to owner retiring. Situated on 1/2 acre landscaped lot. Spacious rooms, 2 car garage and a low asking price of \$120,000.



**BUYERS' DELIGHT**

Urgent sale of brick bungalow with 3 bedrooms, garage & finished rec room with wet bar & fridge. Located on quiet court in Georgetown. Mortgage at 10 1/2%. Asking \$82,500. and open to offers.



**YOUR PRIVATE PARK**

Over 3 landscaped acres with pond and small barn. Spacious rooms with self-contained apartment, ideal for 2 family living. New first time listing, asking \$139,000.

**REG COOPER** 877-9458  
**NORMAN SINCLAIR** 877-6050  
**ILA SWITZER** 877-9500  
**29 MAIN ST. S., GEORGETOWN 877-9500**

**Canada Trust Realtor**

**DAVE McMULLEN**  
**INTERLOCK STONE CONTRACTOR**

- DRIVEWAYS • PLANTER BOXES
- WALKS • POOL DECKS
- PATIOS • RETAINING WALLS

**FREE ESTIMATES • QUALITY WORK**

A variety of shapes, textures, colours and laying patterns. A durable, strong, salt, frost and oil resistant surface transforms your area into lasting beauty.

CALL **877-8483**  
 WE CATER TO HOMEOWNERS

**Region to back Milton**

Halton Region will join the Town of Milton in appealing a Provincial tribunal's decision that could increase the number of Hydro towers running through the town.

Regional Councillors last week approved a recommendation from the planning and public works and administration and finance committees to appeal the Joint Board decision ordering Ontario Hydro to study a route taking towers from London straight along Hwy. 401 into the Milton transformer station.

Hydro had originally supported a plan that would have taken the new towers through farmland in the Nanticoke area, but strong pressure from farm groups defeated that plan.

If the appeals launched by the Town and Region are not successful, Hydro will study an area stretching about 1.8 miles on either side of the highway as the possible site for the new tower line.

**A Whole Lotta Good Times**

**Blizzard '82**

**VS.**

**TAMPA BAY ROWDIES**

**Sunday, August 22; 3:00 p.m.**

**EXHIBITION STADIUM**

**Humpty Dumpty's "Blizzard Bonanza"**

Pick up a small bag of Humpty Dumpty potato chips and get a coupon good for ONE DOLLAR (\$1) OFF regularly priced \$6 and \$3 seats for all Blizzard Home Games (July-August).

Every Humpty Dumpty coupon you redeem -- coupons good at the Blizzard Box Office only -- increases your eligibility for Blizzard Bonanza sweepstake prizes -- 1 of 4 all-expense paid trips for 2 to Soccer Bowl '82 in San Diego, 1 of 25 Blizzard autographed NASL Soccer Balls, and Humpty Dumpty RING-O-LOS!

Visit your local convenience store and check the Humpty Dumpty display for contest details!

Tickets \$6, \$9, \$12. All seats 1/2 price for fans 18 and under or 65 and over! Tickets available at the Blizzard Box Office, C.N.E., or any BASS or Ticketron location. VISA or MasterCard accepted.

**HUMPTY DUMPTY**

**MOLSON SOCCER**  
 MOST VALUABLE PLAYER AWARD

For more information...  
**CALL 977-KICK**