



**Ye Olde  
Candy Shoppe**

**6<sup>99</sup>**



SAY IT WITH  
**SMURFS**

priced from  
**1<sup>99</sup>** and up

**GANONG  
PARTY MINTS**

200 g  
Reg. Price \$1.99

**99¢** ea.



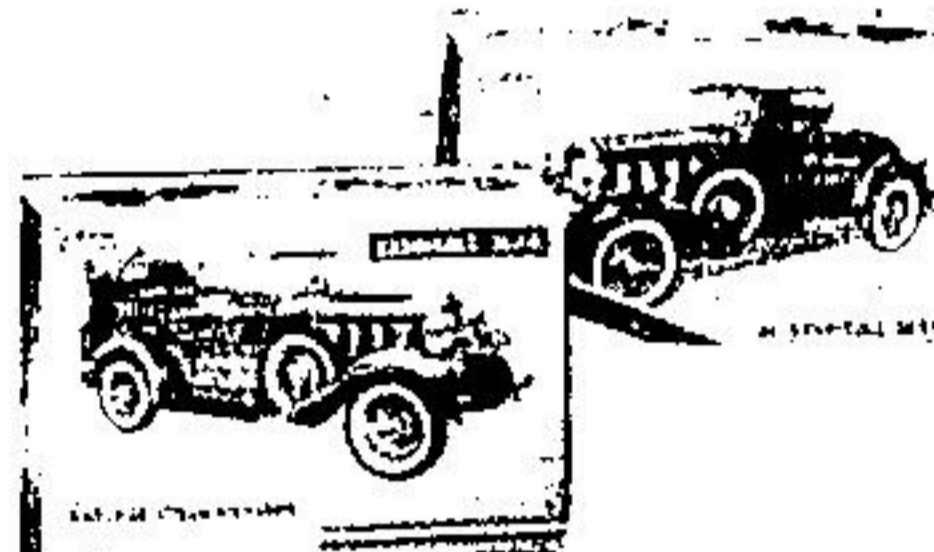
**die-cast  
METAL** **MODELS**  
**1/2 PRICE  
AND LESS**



**Model A Ford Die-Cast Metal**

Still in demand for restoration, hot rods and fun, the Model A today commands a price far in excess of its original showroom cost. These eye-catching hobby kits capture all the qualities of the prototype that made the Ford "A" the most popular car of the thirties. Over 35 parts in die-cast metal and plastic finish into a model 7 1/2 inches long to 1/20 scale realism. Front wheels steer, hood lifts off to show the famous four-cylinder engine. For ages 8 to adult.

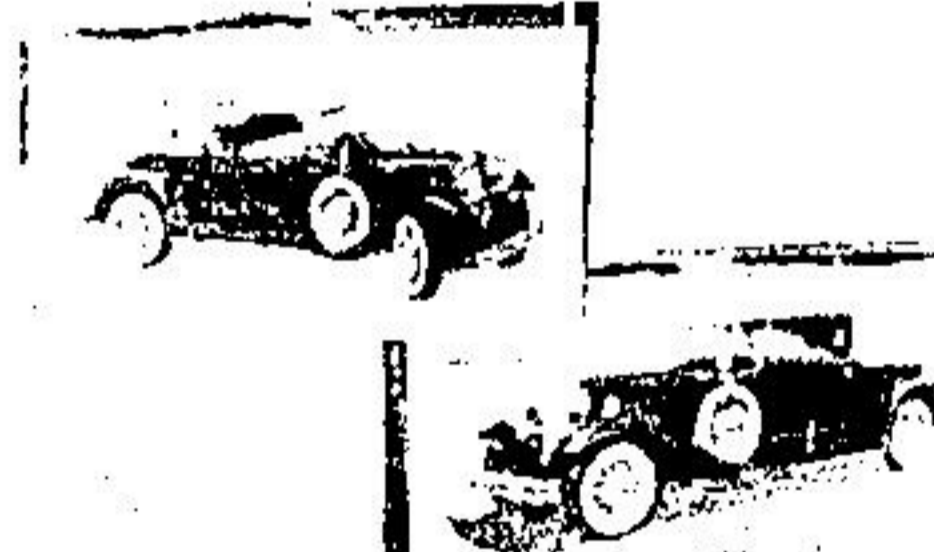
**5<sup>99</sup>** each



**1932 Chevrolets Die-Cast Metal**

The low-priced "luxury" car of its day, the '32 Chevy was first in its field with chrome radiator grilles. Its sporty look was furthered by chrome headlights, hood vents and bumpers. More Chevies were sold in 1932 than any other car. The model is detailed to 1/20 scale and finished to 8 1/2 inches. Over 75 parts, steering front wheels, lift-off hood and detailed engine. For ages 8 to adult.

**5<sup>99</sup>** each



**1930 Packards Die-Cast Metal**

Bring on the gentleman's car! Here's classic Packard styling in a choice of three elegant body styles. The distinctive Packard radiator highlights the finished 9 1/2-inch model, scaled to 1/22 of the original car. Over 135 parts, working worm and sector steering and authentic straight eight engine. For ages 8 to adult. Each in full-color display box.

**8<sup>99</sup>** each



**SJ Duesenbergs Die-Cast Metal**

The aristocrat of automobiles in a choice of two body styles. Each kit finishes into a 1/18 scale model, 12 inches long. Over 150 parts in die-cast metal, plastic and chrome plastic. Front wheels steer with worm and sector gears, hood lifts off to display detailed engine. Flexible exhausts designate the 320 hp supercharged engine. For ages 8 to adult. Each in full-color display box.

**13<sup>99</sup>** each



100 g each

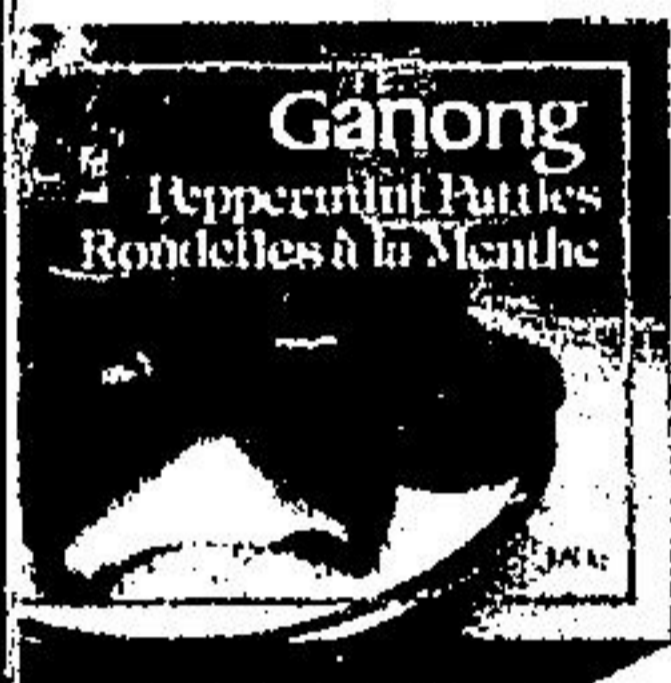
**SMILES 'n CHUCKLES**

**MINT PATTIES**

**59¢**

Sugg.  
Retail  
\$1.05

**1/2 PRICE**



**GANONG  
PEPPERMINT  
PATTIES**

450 g  
Reg. Price \$5.39

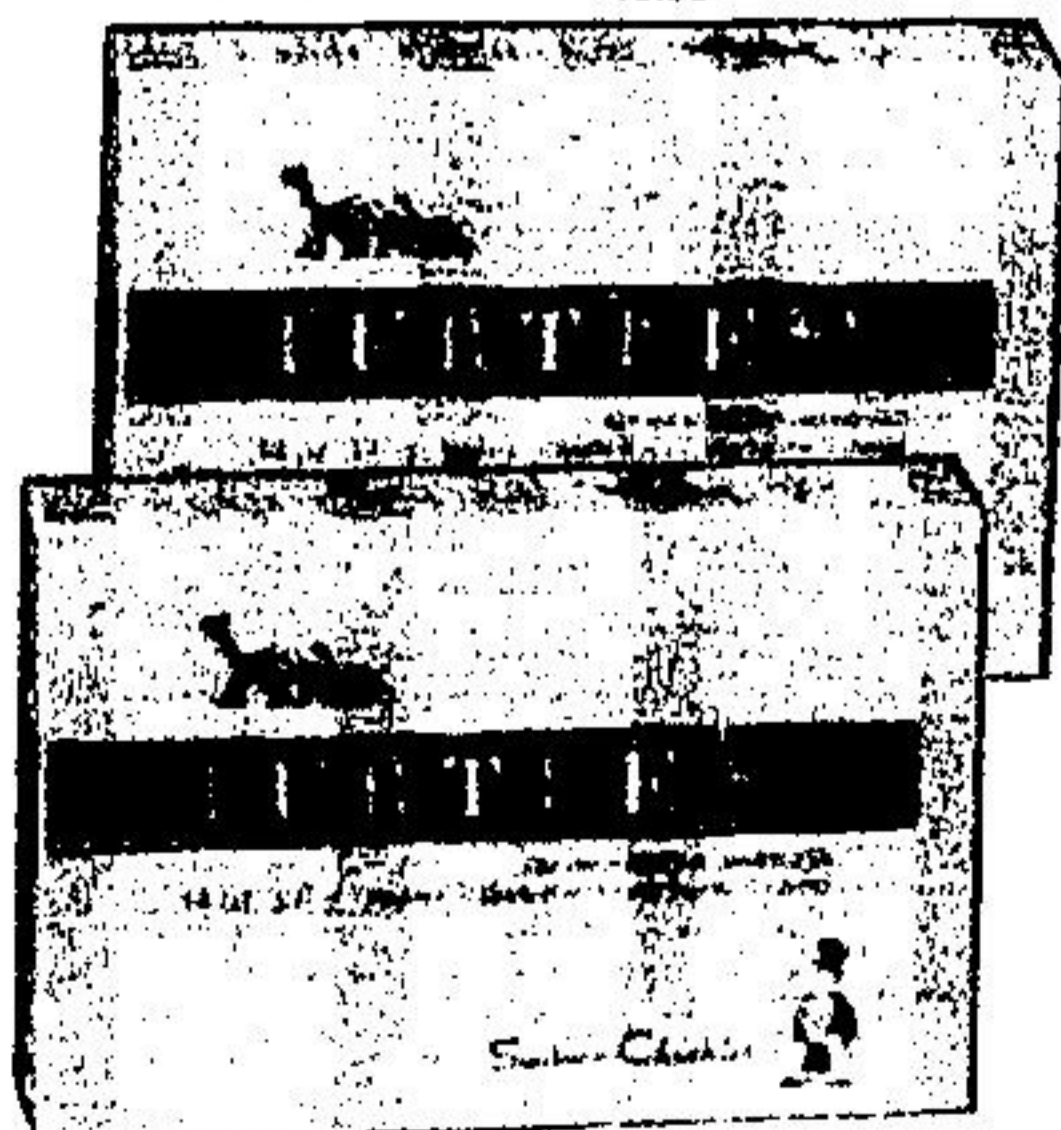
**2<sup>99</sup>** ea.



**ELEGANTE  
ASSORTED  
CHOCOLATE**  
by Smiles 'n Chuckles

600 gram 300 gram

Mfg. Sugg. Retail **3<sup>99</sup>** Mfg. Sugg. Retail **2<sup>99</sup>**  
\$6.89 \$3.99



Sugg. Retail \$6.75  
**SMILES 'n CHUCKLES  
14 oz.**

**TURTLES** **3<sup>99</sup>**  
Available in Light or Dark Chocolate

**JET by Smiles 'n Chuckles  
CHOCOLATE COATED  
CHERRIES**

100 g Package  
Mfg. Reg. Price **1<sup>35</sup>**

**67¢**



**BATTLESTAR  
GLACTICA**

**PAPER  
TABLECOVER** 54" x 88" Sugg. Retail \$1.19 ea. **65¢**

**LUNCHEON  
NAPKINS** 16's Sugg. Retail 79¢ ea. **39¢**

**PLASTIC COATED  
9" PLATES** Sugg. Retail 79¢ ea. **39¢**

**EASTER EGG  
FLOURING KIT**