

Budget wise spring buys for women

New seed-stitch knits

— sale priced

Exclusives from a well-known maker . . . get several for Spring.

Exclusive with Eaton's. Relaxed seed-stitch knits in lightweight acrylic-and-nylon. New textured interest with eye-catching neckline detail. Mix and match for seasonless wear. In ivory, light blue or violet. Sizes S., M., L. (351)

1. Short-sleeved V-neck pullover.

Eaton price, each **22⁹⁹**

2. Long-sleeved boat-neck pullover.

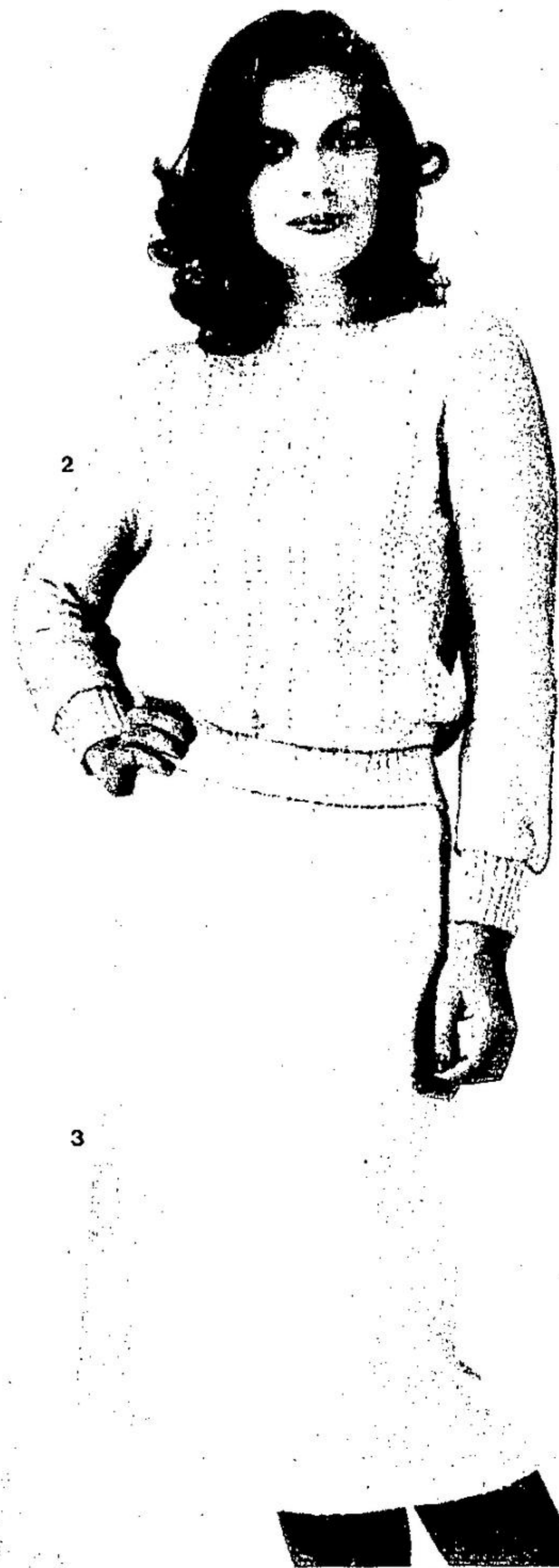
Eaton price, each **26⁹⁹**

3. Pull-on skirt, acetate lined.

Eaton price, each **29⁹⁹**

PHONE 861-5111.

TTY ONLY — 591-2345 (Telephone for the deaf).
EATON'S — Toronto Eaton Centre (2nd floor) — 246;
Yorkdale, Scarborough, Sherway, Don Mills, Shoppers' World, Bramalea, Oshawa, Rockwood, Rexdale, Dufferin, Yonge-Eglinton, Victoria Park, Gerrard Square.



Save 30% on well-known loungers and gowns

4. From Leisure Lady, short, button-through lounge. With two pockets, elastic at the neck and sleeves. In cotton-and-polyester seersucker. In pink, lilac, blue or yellow floral prints on white ground. Sizes S., M., L. (234/725)

Eaton reg. 26.00, **17⁹⁹**
Each

5. As above in long length. (234/725)
Eaton reg. 33.00, **22⁹⁹**
Each

Items 4 and 5 also available at Warehouse Store (Sheppard Ave. West.)

6. From Van Raalte, non-cling satin saucette Antron III nylon gown with lace trim and spaghetti straps. White, Caribbean blue, soft peach. (233) Sizes P., S., M., L. Eaton reg. 20.00. Size OS. Eaton reg. 21.00, **13⁹⁹**
Each

7. Kayser's long gown with sheer yoke and applique trim. In pink, medium blue or ivory nylon. Sizes S., M., L., OS. (233)
Eaton reg. 18.00, **12⁴⁹**
Each

8. As item 7 in short length. (233)
Eaton reg. 17.00, **11⁴⁹**
Each

9. From Mr. Roberts, a long T-shirt lounge in polyester-and-cotton knit. Red, royal blue, gold, rose, aqua, blue. Sizes 7 to 15. (234/725)

Eaton reg. 22.00, **14⁹⁹**
Each

Item 9 also available Warehouse Store (Sheppard Ave. West.)

PHONE 861-5111
TTY ONLY — 591-2345 (Telephone for the deaf)
EATON'S — Toronto Eaton Centre (main floor) — 209; Yorkdale, Scarborough, Sherway, Don Mills, Shoppers' World, Bramalea, Oshawa, Rockwood, Rexdale, Dufferin, Yonge-Eglinton, Victoria Park, Gerrard Square.

**EATON'S
SPRING
SALE**

□ Eaton's — Toronto Eaton Centre: open Mon. to Fri., 10 a.m. to 9 p.m.; Sat. 9:30 a.m. to 6 p.m. □ Yonge-Eglinton: Mon. to Fri., 9:30 a.m. to 9 p.m.; Sat. 9:30 a.m. to 6 p.m. □ Gerrard Square: Mon. to Sat., 9:30 a.m. to 9:30 p.m. □ Yorkdale, Sherway, Rockwood, Rexdale, Warehouse Store, Bramalea, Don Mills, Scarborough, Shoppers' World, Pickering, Sheridan, Oshawa: Mon. to Fri., 9:30 a.m. to 9:30 p.m.; Sat. 9:30 a.m. to 6 p.m. □ Dufferin: Mon. to Sat., 10 a.m. to 10 p.m. □ Victoria Park: Mon. to Fri., 9:30 a.m. to 9:30 p.m.; Sat. 9:30 a.m. to 8 p.m. □ Eaton's telephone order service open 24 hours daily — 861-5111.

EATON'S