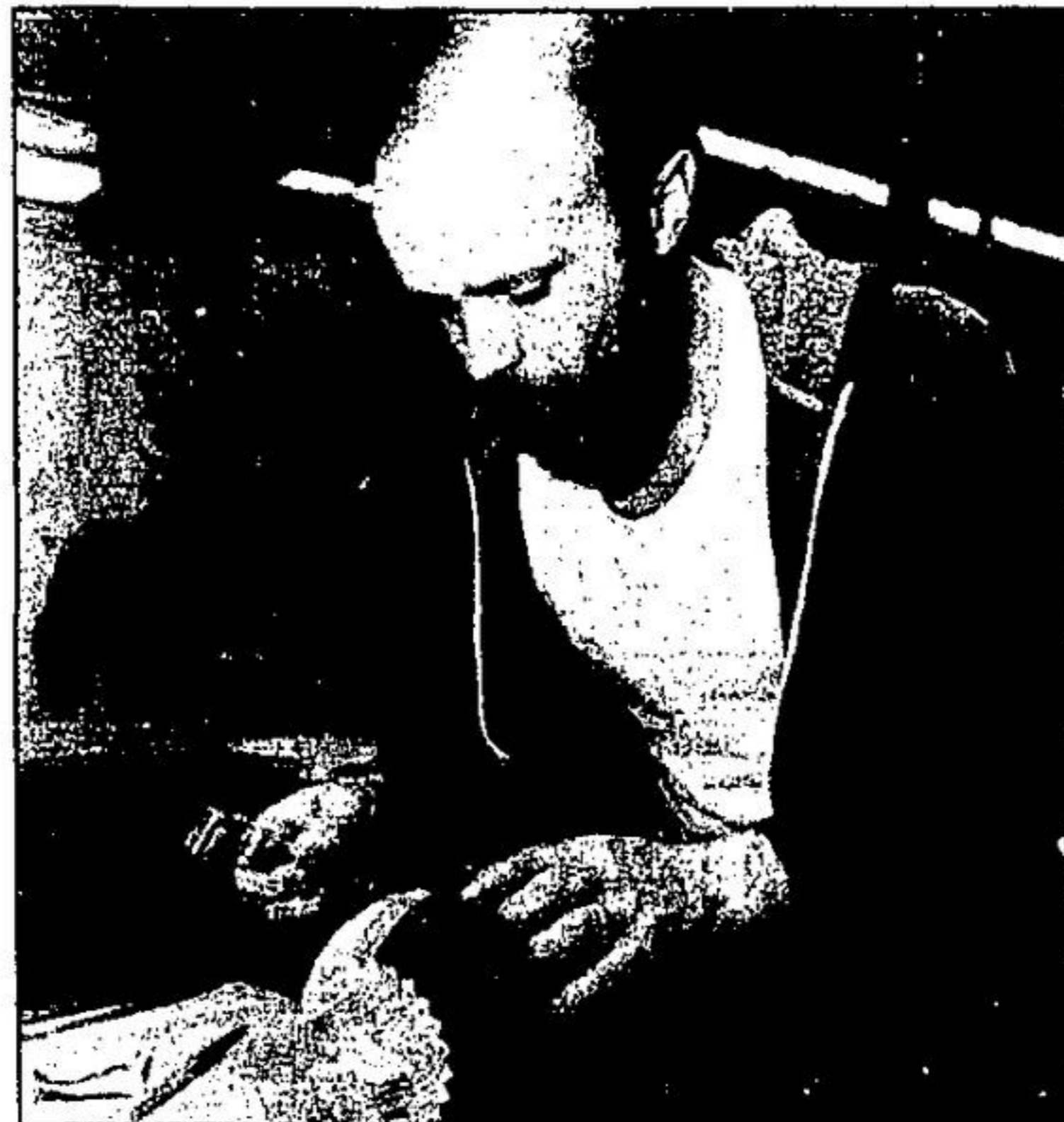


Ken Warwick tries his hand at the radial arm saw.



Janet Boss masters the ups and downs of accounting with the aid of instructor Ian McGillivray.



John Henderson painstakingly strips a portion of a fine old dining table he is restoring.



Help! Rod McEachern comes to the rescue of George Forrest as part of a St. John Ambulance exercise.



Going in circles can be fun as Ron Kirkwood discovers with the hand saw.

Skate-a-thon March 15

The annual Acton Rotary Club skate-a-thon will be held on March 15 from noon until 3 p.m. Funds raised by the skate-a-thon will go towards Rotary community projects and the local schools participating, Robert Little, McKenzie-Smith, M.Z. Bennett, St. Joseph's, Brookville, Speyside, Ospringe and Limehouse.

The prize structure for children has been changed. There will be a \$50 cash prize for the top money raising boy and girl in grades five and below and \$50 each for the top boy and girl in grades six, seven, or eight. In addition every child who raises \$35 or

more will receive a prize. Children received their sponsorship sheets this week, they must be turned back in by March 12. Adults are also invited to sign up sponsors and skate in the event at the Acton Community Centre.

BUY WISE
WINDOWS AND DOORS
FACTORY OUTLET

WINDOWS - Wood or Alum.
New or Replacement
DOORS - Patio and Entrance
ALUM. STORM WINDOWS
& DOORS • We Also Install
THE PLACE TO SAVE!
Visit Our Showroom
Hwy. No. 7 (South side) Phone
334 GUELPH ST. E. 877-1186
GEORGETOWN

FREEZER FRENZY
featuring
LUCKY ONE POP
— SPECIALS —

Cheftain Burgers 11.95 \$13.99
McCain Mini Pizzas 8/2.80
(while quantities last)

MILL ST. WEST OF TRAFFIC LIGHTS
12 Mill St. W., Acton 853-0101

Grand Opening
NATURALIZER SHOE SHOP

Cozy - Black, Bone
\$38.00

COME IN AND SEE OUR NEW STORE - BROWSE AROUND!
3 WEEKLY CUSTOMERS WILL WIN A PAIR OF NATURALIZER SHOES

SIZES... SERVICE... FIT...
OUR SPECIALTIES

AAA	AA	B	C	D
7-11	8 1/2-11	5-11	5 1/2-10	5 1/2-10

GENERAL SIZE CHART • Deposit coupon in box in store - No purchase necessary

NATURALIZER SHOE SHOP
35 Wyndham Street North • DOWNTOWN GUELPH • 822-9751

ASTRO ENERSAVE CORP.
MAGNETITE WINDOWS

A Proven Revolutionary New Storm Window that you install from the "INSIDE"

FIGHT HEAT LOSS

- ELIMINATES AIR INFILTRATION
- ELIMINATES CONDUCTIVE HEAT LOSS
- REDUCES FUEL COST BY 40%
- REDUCES WINDOW HEAT LOSS UP TO 90%
- SUPPRESSES STREET NOISE
- FROSTLESS
- REDUCES FADING OF FABRIC e.g. DRAPERIES & FURNITURE
- REDUCES SUMMER AIR CONDITIONING COST

(DEVELOPED BY THE MASSACHUSETTS INSTITUTION OF TECHNOLOGY)

CALL FOR FREE HOME ENERGY AUDIT OR VISIT OUR SHOWROOM.

CHARGEX
VISA
ASTRO ENERSAVE CORPORATION
1027 Spoons Rd.
Unit 22
Oakville, Ont. 842-4280

Baines
(Continued from page 1)
said the judge. He asked lawyers representing Mrs. Baines and Mrs. Currie to discuss it with Mr. Penman and report back to court at noon today.

Is Brian Penman still interested in seeking the Progressive Conservative candidacy in Halton-Burlington?

"The question of where I'm coming from has been established historically," Penman said in a telephone interview this morning. His interest has been confirmed in a sequence of events starting in July when he indicated such interest to the riding.

Because of complex legal issues involved in the challenge to the candidacy of Fran Baines, Penman indicated he could not make a direct public statement concerning his ambitions.

"I've not had an opportunity to understand the legal implications."

"There's just too many things pending on my decisions to be frivolous," said Penman.

Terry O'Connor of Oakville, Mrs. Baines' representative and a former Halton MP, told the court there was no conspiracy to prevent legitimate party members from voting at the nomination convention. The convention had to be moved ahead after a quick election call by Premier Bill Davis.

He pointed out Mrs. Baines has already spent \$18,000 on her campaign and has committed herself to a further \$7,000.

The Restaurant at the Terra Cotta

is fine leaded glass, English wallpaper and superb food. An extremely elegant atmosphere and a very reasonable luncheon menu combine to make the Restaurant an ideal place in which you can conduct your next business luncheon.

Fenwick's at the Terra Cotta

is a friendly room with a fireplace. For afternoon tea and scones or a light lunch. Sample our piping hot Hungarian soup, Chicken-a-la-King, Beef on a Kaiser or Vol-au-Vent. A perfect way to round off a day of skiing or touring the beautiful Caledon Hills.

FOR RESERVATIONS PHONE 453-8261.

The Terra Cotta Inn

Renovation Savings!

LOW PRICES JUST WHEN YOU NEED THEM MOST!

CASHWAY SALE PRICES UNTIL TUES. MAR. 10th
Before you drive that nail, drive to Cashway. Our savings will help you Build, Renovate and Repair!

2 x 3-8' SPRUCE FOR YOUR FRAMING JOIST! STUD GRADE 79¢ EACH	SPRUCE STRAPPING PRICES PER 8'-FT. PIECE: For your interior job! 1x2 Now Only 33¢ 1x3 Now Only 54¢ 2x2 Now Only 77¢	"Z-BRICK" IN INCA RED COLOUR! OUR REG. \$5.29 4.29 CARTON
WHITE TOILET "A" GRADE REVERSE TRAP OUR REG. \$58.95 54.88	WHITE BASIN 17"x18" - "A" GRADE OUR REG. \$24.99 20.88	CARPETING VALUE! FOAM BACK POLYPROPYLENE OUR REG. \$5.85 4.77

4'x8' PANELLINGS PREFINISHED RANDOM GROOVED
Our Reg. \$5.99
Hayward's Hickory **4.99**
Voyageur Birch
Copper Beech **4.99** PANEL

4mm. thickness first quality overlaid woodgrain Mendeboard Particleboard panellings. COVER YOUR WALLS FOR ABOUT 10¢ PER SQUARE FOOT!

MASONITE Our Reg. \$6.88
Pecan Or Highland Birch **5.88** PANEL

1/8" thickness Intended for use over existing solid walls of Plaster, Gypsum Board, etc. COVER YOUR WALLS FOR ABOUT 18-22¢ PER SQUARE FOOT!

MASONITE Our Reg. \$8.99
Heritage Teak Or Heritage Surfwood **7.99** PANEL

3/16" thickness first quality Hardboard. Two handsome choices. COVER YOUR WALLS FOR ABOUT 26¢ PER SQUARE FOOT!

Sump Pump!
1/3 H.P. With 1 1/2" Discharge!
Our Reg. \$49.95
43.88

"GSW" model. Non-clog Impeller. ABS base with top suction. Galvanized steel column. You save \$6.07!
WITH 8-FOOT CORD
Our Reg. \$54.95
\$47.88

4'x8' Assorted Plywoods
Choices for the Do-It-Yourselfer. Low Prices per sheet!

1/4" FACTORY GRADE FIR	Our Reg. \$12.99	\$11.88
1/4" FIR GOOD 1 SIDE	Our Reg. \$13.88	\$12.88
1/2" FIR GOOD 1 SIDE	Our Reg. \$21.49	\$19.88
3/4" FIR GOOD 1 SIDE	Our Reg. \$29.49	\$27.49
1 1/16" RIBBON MAHOGANY	Our Reg. \$25.97	\$22.97
1 1/16" BIRCH	Our Reg. \$29.75	\$24.95

CASHWAY BUILDING CENTRES

OPEN WEEKDAYS 8:30 A.M. - 6:00 P.M.
SATURDAYS 9:00 A.M. - 5:00 P.M.
THURS. & FRIDAY 9 A.M. - 6:00 P.M.
*SOME AREAS, HOURS COULD VARY SLIGHTLY PLEASE CHECK

BRAMALEA-MALTON 7950 Bramalea Rd. 792-3111
BROOKLIN Hwy. 7 & 12 655-3312
ETOBICOKE 1548 The Queenway 256-6827
NORTH YONGE At Oak Ridges 773-4381
OAKVILLE 2311 Royal Windsor Dr. 845-9562
SCARBOROUGH 4414 Steeles Ave. E. 297-4462

DELIVERY IS AVAILABLE AT REASONABLE RATES FROM CASHWAY