

BEAVER MANUFACTURED HOMES

A DIVISION OF BEAVER LUMBER CO. LTD.



Build Your Own Home — Pick The Style You Want From Our Full-Colour Catalogue!

Pick the home of your dreams just by looking through our Beaver Homes Catalogue! And when you've chosen the style you want at the price you want — you're ready to build your own home! A great deal of the work really needs no extra-special skills. In fact, once the foundation is ready, you can 'close-in' the exterior shell of a Beaver home in as little as 1 day. We get you off to a flying start by pre-manufacturing the roof and wall sections! The remaining products and materials are delivered to your lot stage by stage. Simply arrange these deliveries with Beaver.

Send to: Beaver Lumber Co. Ltd.
160 Carrier Drive, Rexdale Ont.

Yes, I would like more information about Beaver Manufactured Homes.

Please send me a copy of: Beaver Homes Catalogue
 Beaver Cottage Catalogue Instant Garages Farm Buildings

Name: _____

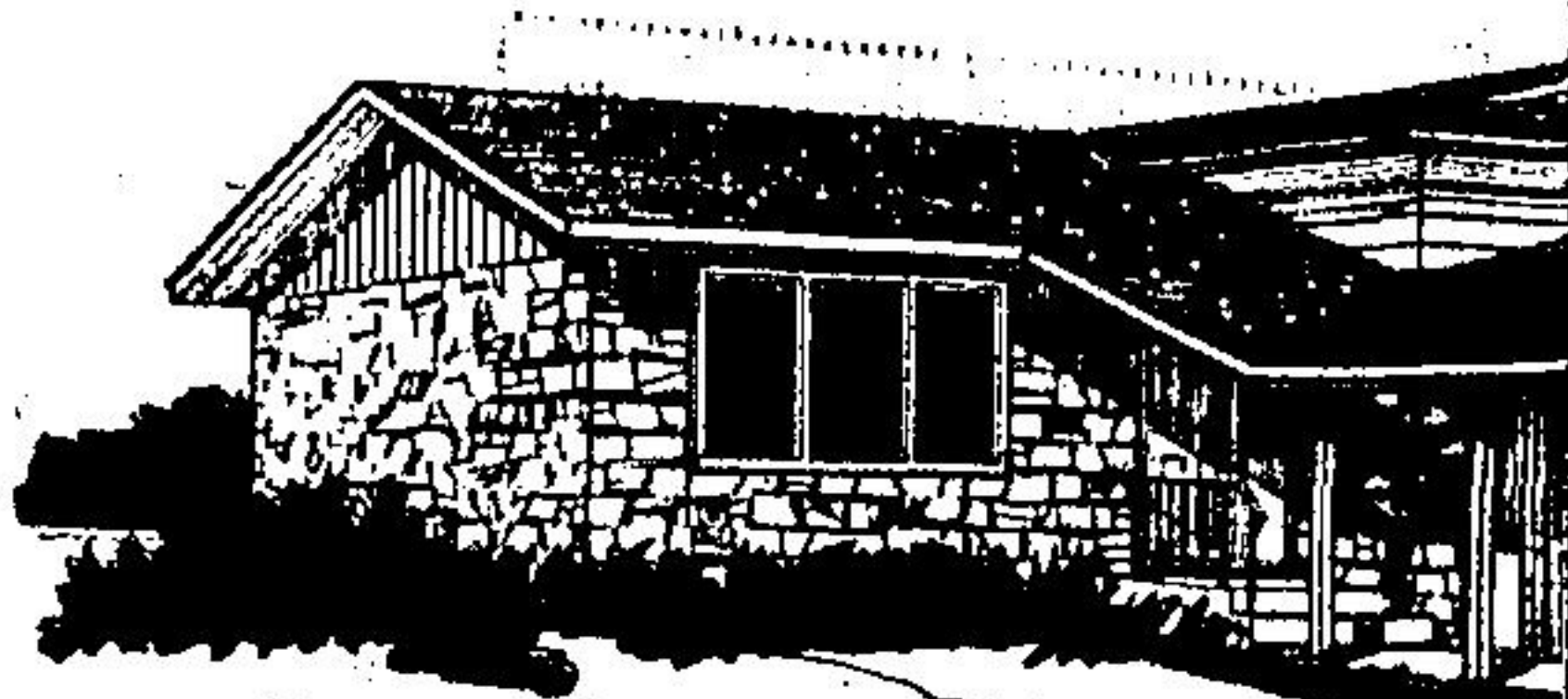
Address: _____

City/Town: _____ Postal Code: _____

Prov.: _____ Phone: _____

Please enclose \$3.00 for postage and handling.

I own my own lot I plan to build this year I will require financing



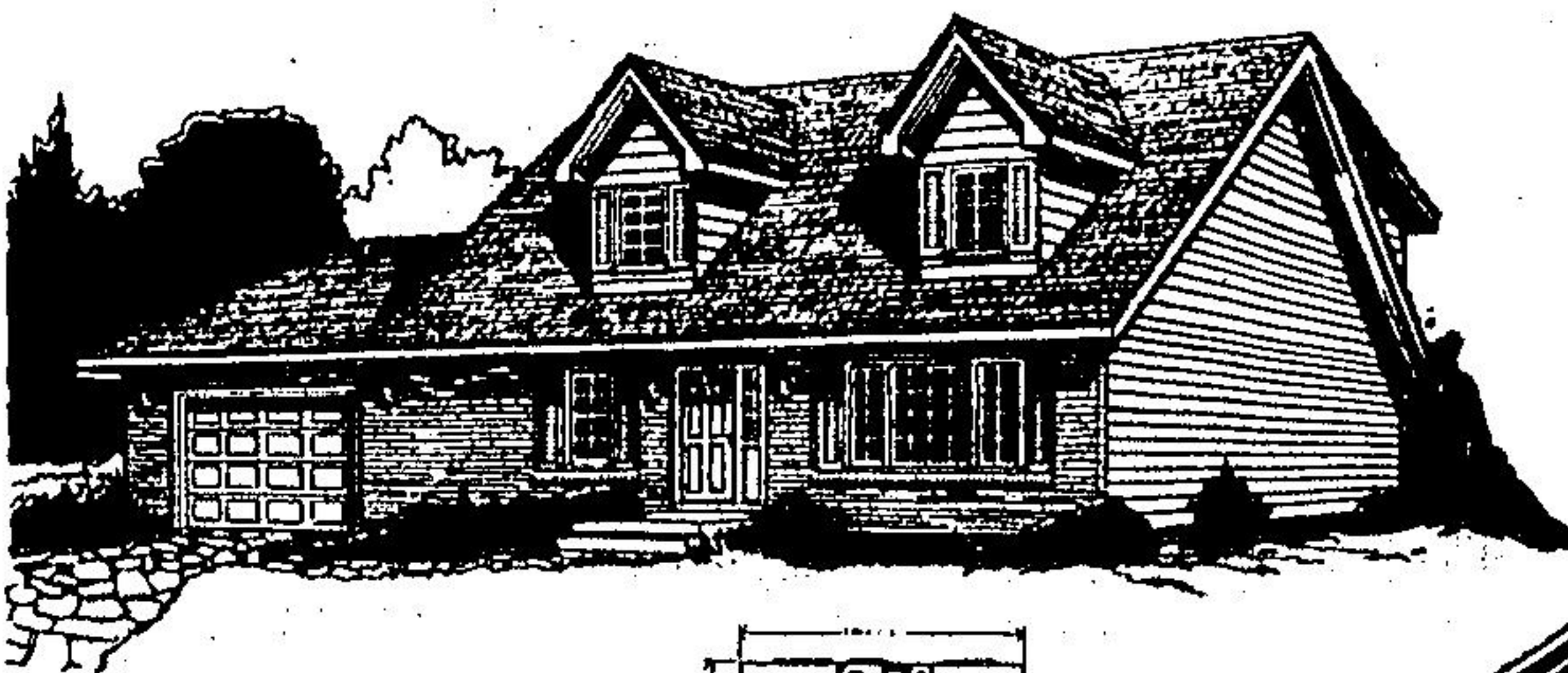
Westboine

Attractive unique styling with 1213 sq. ft. of living space. The entry into the front foyer is from a covered walkway, accessible from either in front or through the double garage doors. Three bedrooms — the master bedroom featuring a large walk-in closet and private en suite.



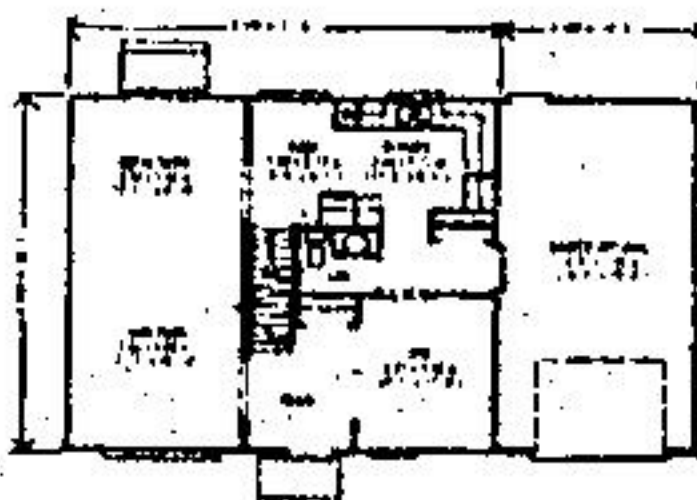
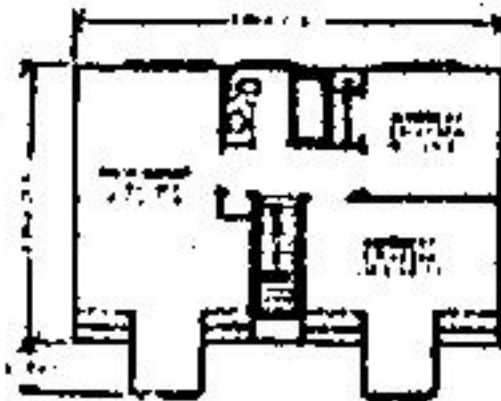
Balmoral

A unique back split, built for comfortable family living. Has a covered porch, a cathedral ceiling in the foyer, and the living room. Double attached garage has a convenient entrance to the front foyer. Features a separate dining room, kitchen, & large eating area. Three bedrooms — master bedroom has a private en suite. 1822 sq. ft.



Cape Cod

1520 sq. ft. of delightful New England styling with a main floor den that can be converted to a T.V. room, library, or home office. Has a large living/dining room and eat-in kitchen. Centrally located bathroom upstairs accommodates the three bedrooms. A large storage closet and 2 pc. washroom are located at the side entry.



Melford

1259 sq. ft. of living space makes practical and spacious family home. Features an open kitchen-dining area with a side entrance that leads directly into the living areas, main level lavatory, and basement entry. Ample sized and centrally located bathroom.

