

KNOCKOUT NEWS!

This is Antron III nylon broadloom — the iron hand in the velvet glove. Super tough yet extremely elegant. 19 colours to choose from. Extra-ordinary value right now at Eaton's Knockout price!

Save 7.00 sq. yd. on Regal Velvet broadloom

Eaton reg. 28.95,

21⁹⁵

sq. yd.

Regal Velvet's durability was tested by 165,000 footsteps!

Eaton's Product Research Bureau placed Regal Velvet in a busy area at the Eaton Centre store. After 165,000 pounding footsteps had been automatically clocked, the carpet went back to the lab for microscopic checking. Remarkable! There were virtually no signs of wear!

Check the features!

- Regal Velvet is designed to control static and hide soil.
- Blends with traditional or contemporary room settings. Carpet width is approx. 12 feet.
- Very easy to clean; keeps its new look for years.
- Exciting range of 19 colours: Nile green, Vintage burgundy, Exotic almond, Golden pinot, Catalina blue, Natural leaf, Apricot brandy, Spode brown, Wedgwood blue, Jade shadows, Canyon rust, Cashmere, Tanuki beige, Cacao, Tabac, Mandarin, Sahara, White rum, Aqua.

Use Eaton's Shop-in-the-Home Broadloom Service

Too busy to shop? We'll be pleased to take samples of Regal Velvet to your home and provide an on-the-spot estimate. Just phone 861-5111 in the Toronto area. Outside Toronto, please call your nearest Eaton's store.

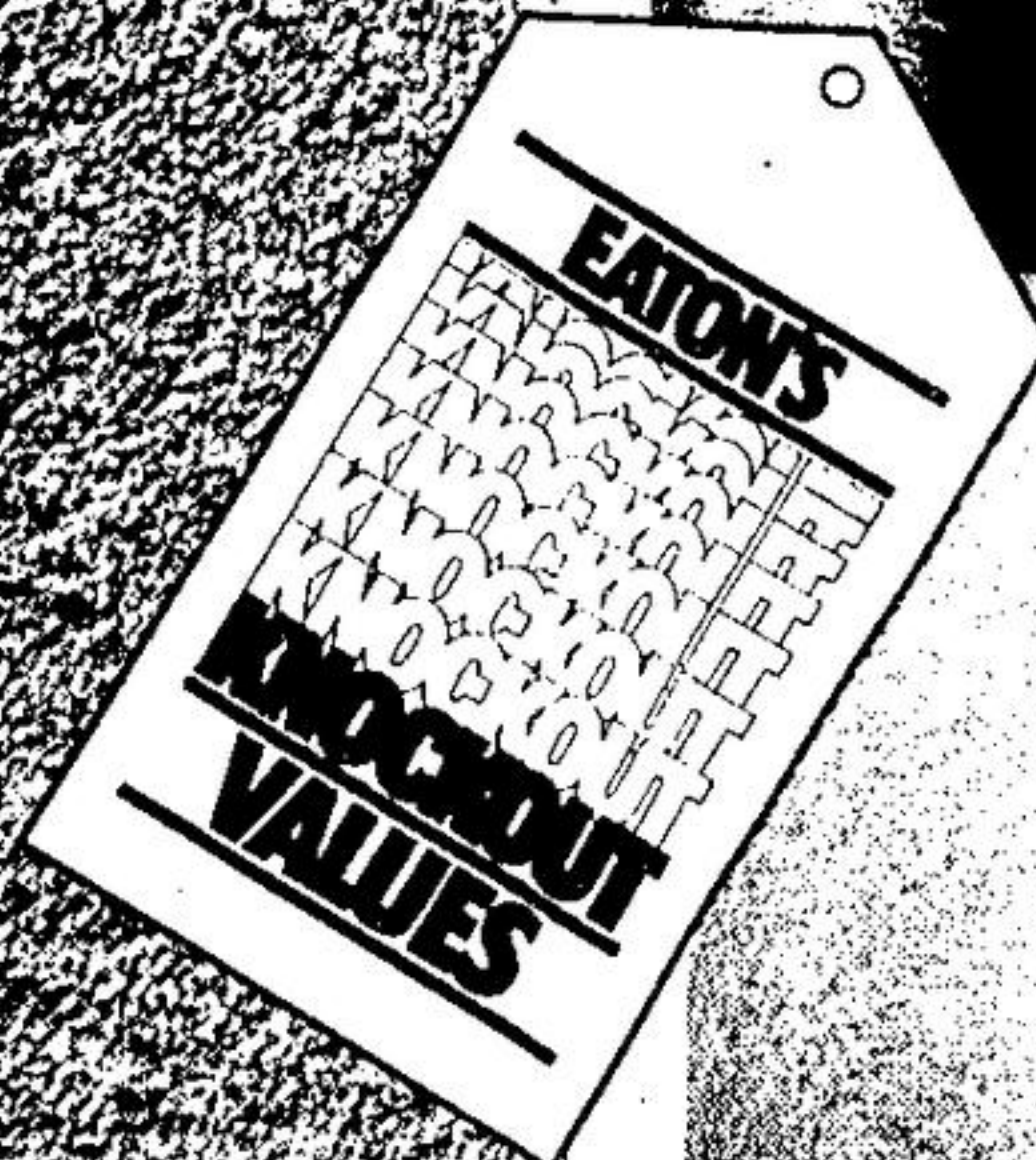
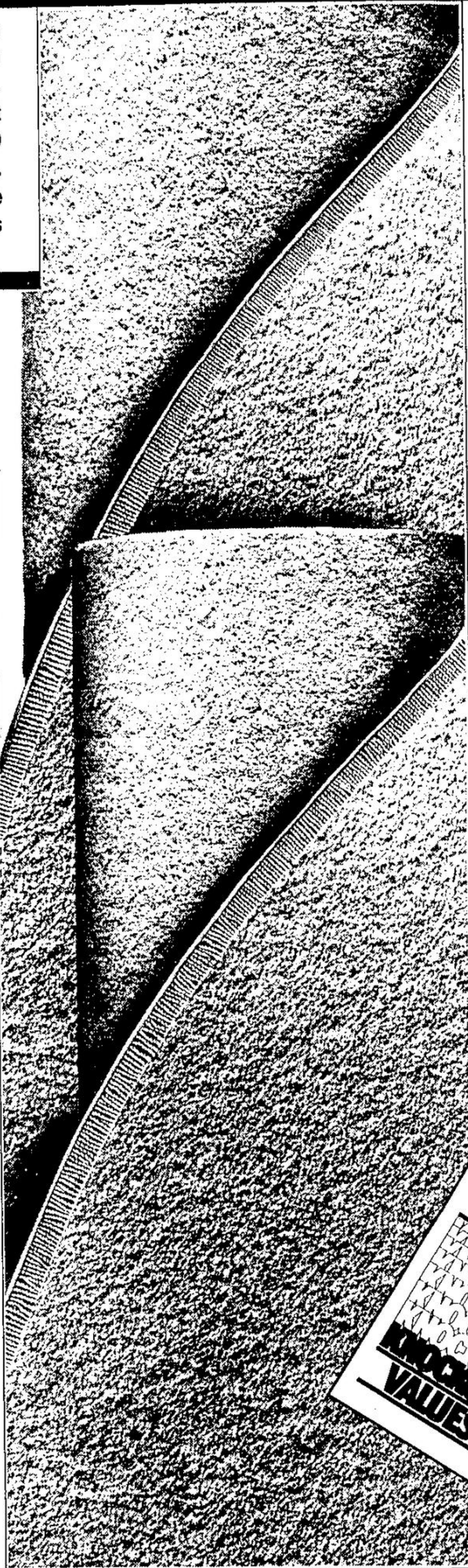
Phone 861-5111

TTY ONLY — 591-2345 (Telephone for the deaf). EATON'S — Toronto Eaton Centre (4th floor) — 272; Yorkdale, Scarborough, Sherway, Don Mills, Shoppers' World, Warehouse Store (Sheppard Ave., West), Bramalea, Oshawa.

T. EATON CO.

ADVERTISING CORRECTION

EATON'S Advertisement appearing in Inland Newspapers on Wednesday, November 5, 1981. PLEASE NOTE: Page A-22 — Item 7 — Mukluks — The illustration is incorrect. These Mukluks do not have a cuff. Inadvertently, the error listed above has appeared in our advertising. We sincerely regret any confusion or inconvenience to our customers.



Women's luxurious soft lined leather gloves in 3 classic styles. Put the finishing touches on your Winter wardrobe now! Call Eaton's buyline 861-5111. Just say charge it on your Eaton's account.

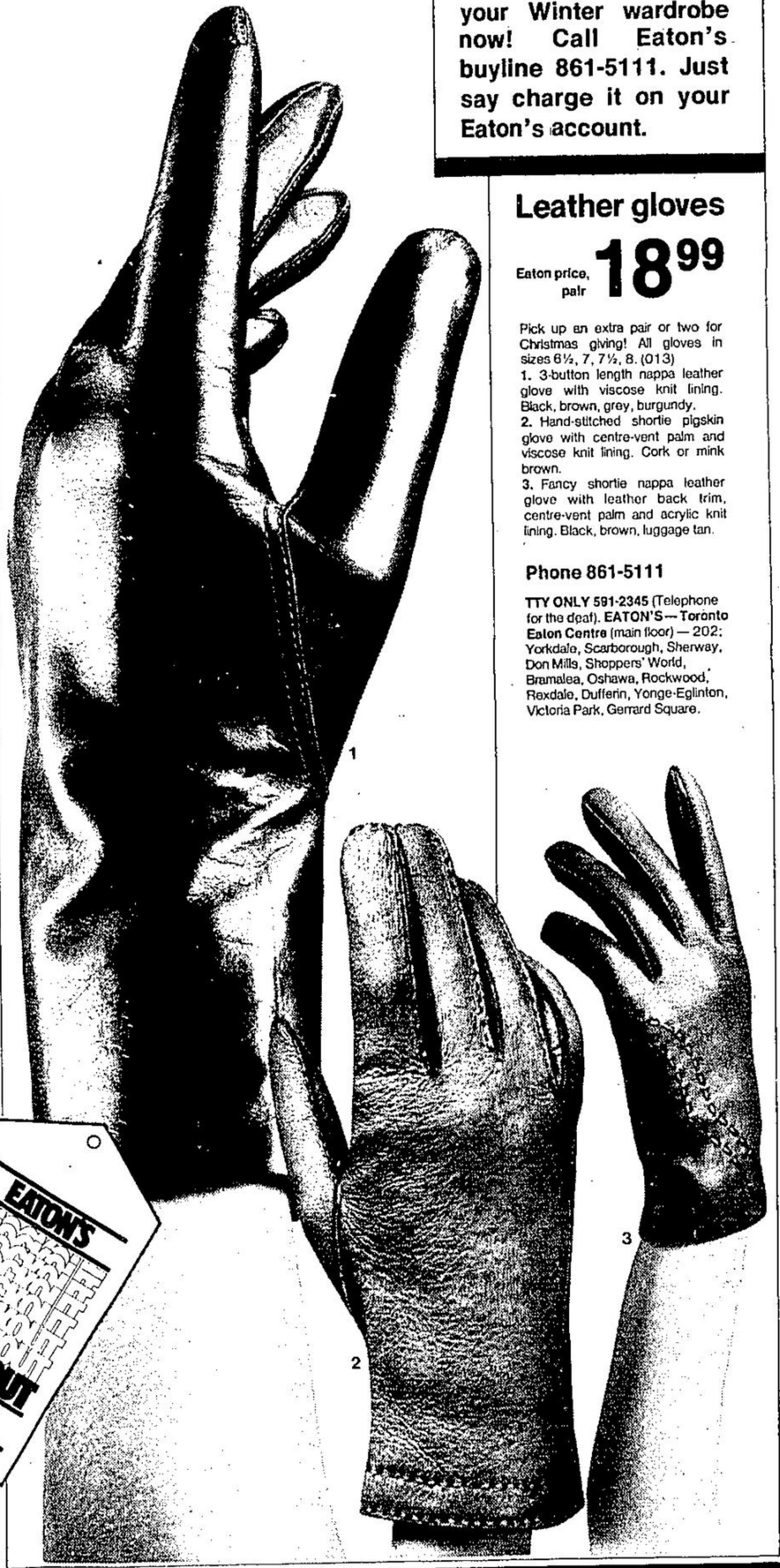
Leather gloves

Eaton price, pair **18⁹⁹**

- Pick up an extra pair or two for Christmas giving! All gloves in sizes 6 1/4, 7, 7 1/2, 8. (013)
1. 3-button length nappa leather glove with viscose knit lining. Black, brown, grey, burgundy.
 2. Hand-stitched shortie pigskin glove with centre-vent palm and viscose knit lining. Cork or milk brown.
 3. Fancy shortie nappa leather glove with leather back trim, centre-vent palm and acrylic knit lining. Black, brown, luggage tan.

Phone 861-5111

TTY ONLY 591-2345 (Telephone for the deaf). EATON'S — Toronto Eaton Centre (main floor) — 202; Yorkdale, Scarborough, Sherway, Don Mills, Shoppers' World, Bramalea, Oshawa, Rockwood, Rexdale, Dufferin, Yonge-Eglinton, Victoria Park, Gerrard Square.



■ Eaton's—Toronto Eaton Centre: open Mon. to Fri., 9:30 a.m. to 9 p.m.; Sat. 9:30 a.m. to 6 p.m. ■ Yonge-Eglinton: Mon. to Fri., 9:30 a.m. to 9 p.m.; Sat. 9:30 a.m. to 6 p.m. ■ Gerrard Square: Mon. to Sat., 9:30 a.m. to 9:30 p.m. ■ Yorkdale, Sherway, Rockwood, Rexdale, Warehouse Store, Bramalea, Don Mills, Scarborough, Pickering, Sheridan, Oshawa: Mon. to Fri., 9:30 a.m. to 9:30 p.m.; Sat. 9:30 a.m. to 6 p.m. ■ Dufferin: Mon. to Sat., 10 a.m. to 10 p.m. ■ Shoppers' World: Mon. to Fri., 10 a.m. to 9:30 p.m.; Sat. 10 a.m. to 6 p.m. ■ Victoria Park: Mon. to Sat., 9:30 a.m. to 10 p.m. ■ Eaton's telephone order service open 24 hours daily—861-5111.

EATON'S
is *Santa's* Store