



"A" GRADE WHITE!

3-PC. BATHROOM

All-In-One Package Includes Reverse Trap Toilet, Enamelled Steel 5-Ft. Bathtub and popular 17"x19" size vitreous china basin. Fittings including basin legs and toilet seat & cover are extra.

REG. \$184.99
YOU SAVE \$15.11!
\$169⁸⁸

TOILET ONLY-REG. \$54.95!
YOU SAVE \$5.07!
"A" Grade White China, Reverse Trap Model.
\$49⁸⁸

TOILET SEAT AND COVER SET
OUR REG. \$12.49
White composition "Moldex" Model No. 99.
\$9⁹⁵

BASIN ONLY-REG. \$23.99!
"A" Grade White drilled for 4" Centre set (see below).
\$19⁸⁸

4" CENTRE SET
REG. \$20.99!
By "Waltec" Acrylic handles, save Now!
\$18⁸⁸

THE RIGHT TOOLS FOR THE JOB!



MEASURING TAPE- YOU SAVE \$5.31!
"Evans" Model CKT18ME
16 Feet x 3/4" with English/Metric read-out! REGULAR \$12.19
\$6⁸⁸

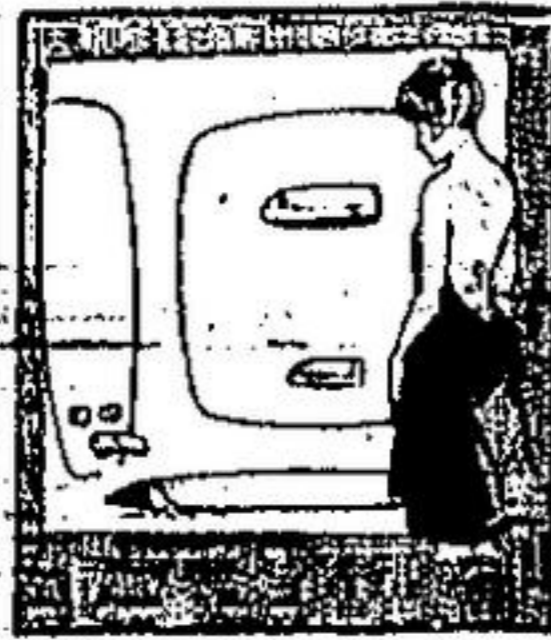
FULLER 5-IN-1 SCREWDRIVER
Mod. 55, Regular \$2.45
Has 2 Robertson, 1 Phillips, and 2 Slot Type Blades!
\$1⁴⁹

"DISSTON" HAND SAW- SAVE \$2.61 Now!
Model K1 Regular \$10.69!
26" x 8 points. Straight back style. Accurately set teeth.
\$7⁸⁸

STANLEY CLAW HAMMER SAVINGS!
Model C311 1/2-Reg. \$5.99
16-Oz. with ball face and hardened steel head!
\$4⁸⁸

STANLEY LEVEL- YOU SAVE \$6.20!
Our Regular \$17.19!
24" long. Extra low price right now!
\$10⁹⁹

STANLEY COMBINATION 12" SQUARE
Save \$3.30! Reg. \$8.59
Scriber and Level Vial in handle.
\$5²⁹



WHITE 3-PIECE TUBSURROUND
REG. \$78.95
\$68⁸⁸

3-Pce. ABS Plastic wall kit for 5-ft. Bathtubs. 5'x5' back panel and two side panels. Each 5'x30".



"B" GRADE WHITE 17"x19" BASIN
REG. \$12.95
\$10⁸⁸

Vitreous China drilled for 4" centre set. Minor flaws in finish only. Legs, Faucet, etc. Npt included.

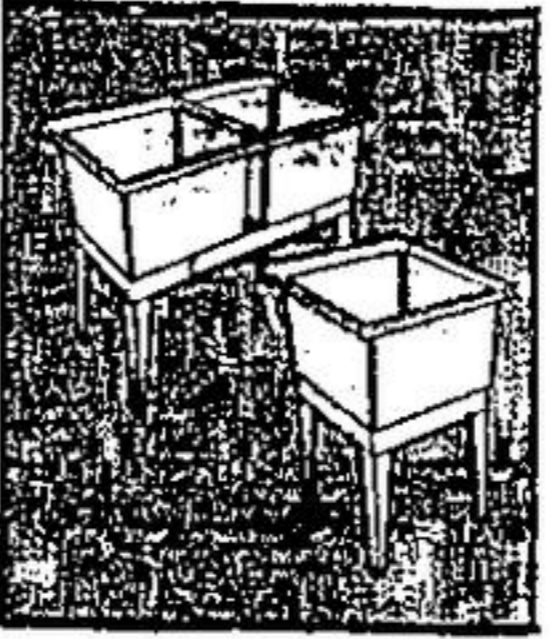


BATHROOM TILEBOARD
4'x8' \$1249
REG. \$13.50 SHEET

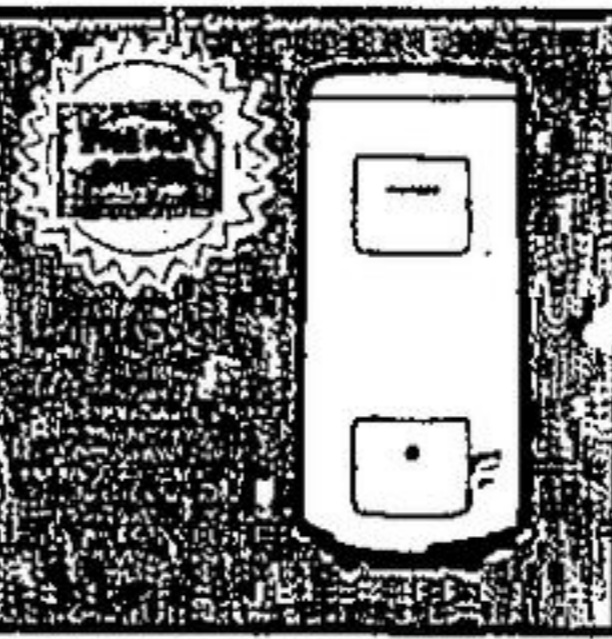
White with Black Scoring. Easy wipe-clean finish! A Fine-idea for Bathroom, Kitchen, Laundry Room Walls.



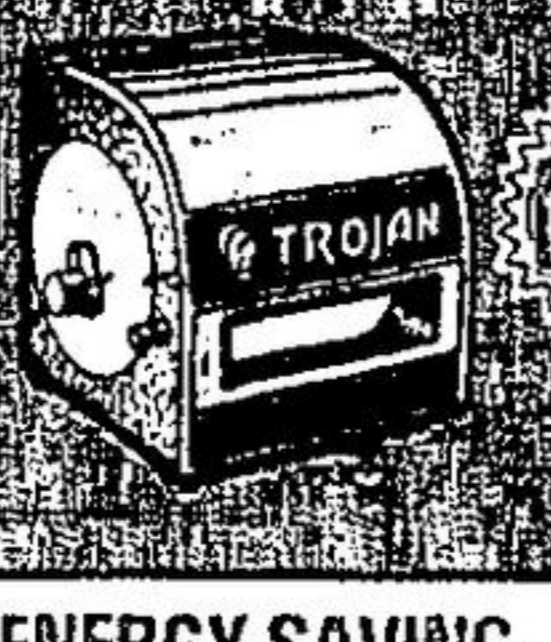
SAVE! 2-PIECE TORCH KIT
REG. \$11.99
"Borzn-O-Matic" Propane Torch with Burner Head.
REFILL TX19 14.1OZ. (400G)
\$8⁹⁹
\$2.47



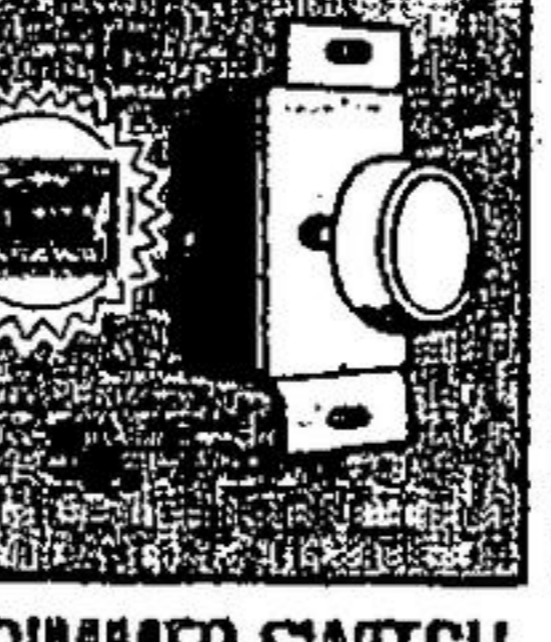
SINGLE, DOUBLE LAUNDRY TUBS
SINGLE \$19⁹⁹
DOUBLE \$36⁸⁸
Complete with ledge. Metal legs. White polypropylene.



40-GAL. MODEL WATER HEATER
OUR \$129⁹⁵
PRICE
Two 3000-watt elements. Glass-lined tank backed by the maker's 5-year warranty.



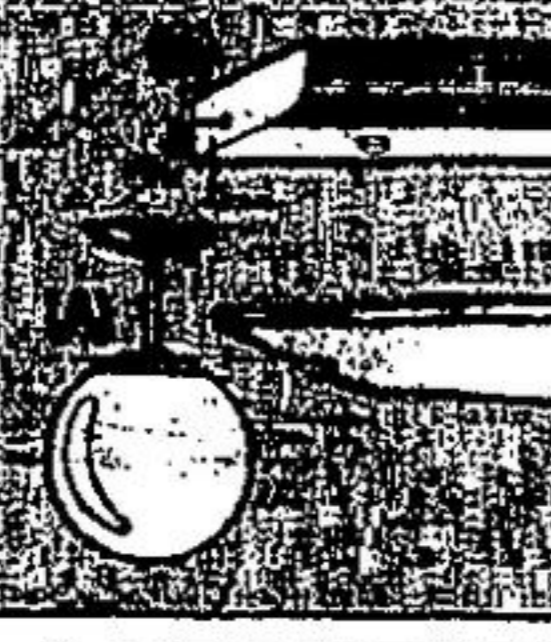
ENERGY-SAVING HUMIDIFIER
REG. \$65.99
\$59⁹⁷
Our "Trojan" brand. Up to 24 gallons capacity per day, for house up to 2000 sq. ft. Helps cut fuel costs!



DIMMER SWITCH CONTROLS LIGHTING
OUR PRICE \$444
Use only as much light as you really need. A dimmer switch lets you regulate lighting from full bright down to dark to cut light bills!



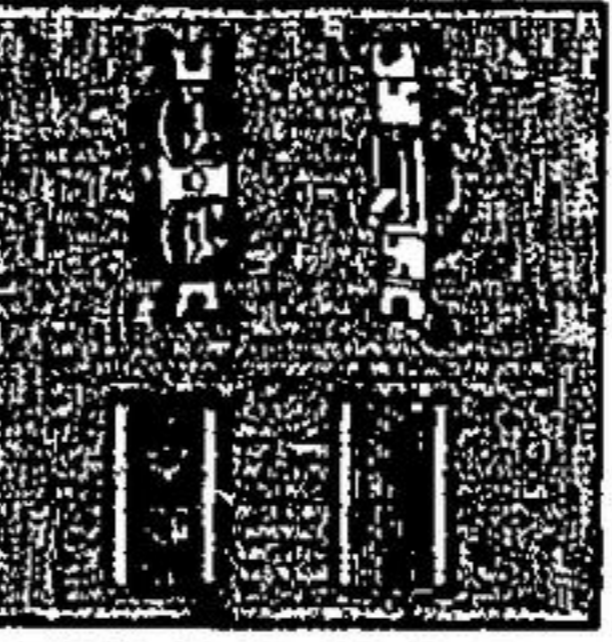
COPPER 14/2 NMD7 ELECTRIC WIRE
248-Ft. Roll
\$28⁹⁷
Two wires plus ground. Popular for most household jobs. Per 75-Meter (248-Ft. Roll). Save Now. OUR REG. \$33.95 ROLL!



LIGHTING & ELECTRICAL!
(A) 8" SWEDISH BALL FIXTURE
Our Regular \$7.59!
8" drop. Frosted White Glass. Bulb is extra. For Kitchen, Hallway, etc.
\$6⁹⁵ EACH
(B) UNDER-THE-COUNTER LIGHT
Our Regular \$10.29!
18" long. Complete with tube and plug-in cord. White. Use it almost anywhere!
\$8⁷⁹ EACH
(C) 4-FT. FLUORESCENT FIXTURE
Rapid-Start Model
With wrap-around lens. Two-tube model (tubes are extra). Special price!
4-FT. FLUORESCENT TUBE Reg. \$1.49.....
\$25⁹⁷ EACH
\$1.29 EACH



PORTABLE BASEBOARD HEATER
1000-Watt Model about 36" long for heat where and when you need it. Looks and heats like a built-in.
110/120V With Cord.
\$19⁹⁵



BROWN SWITCH PLATE 19¢
BROWN OUTLET PLATE 19¢
BROWN DUPLEX RECEPTACLE 59¢
LIGHT SWITCH Single Pole 66¢



"STARTER" PLANS!
HOUSES! COTTAGES! GARAGES!

Building Ideas to start with including Single and Double Garage plans...also 2 and 3-bedroom House and Cottage plan suggestions. They're yours FREE for the asking at any of our Building Centres.

WORKING BLUEPRINTS
Sets of detailed working Blueprints are available on many of our House, Cottage and Garage plan suggestions...also on a Baby Barn plan. Each lists all materials required. The fee for each set of Blueprints is refundable should you purchase the materials called for at any of our Centres.

THE CASHWAY MATERIALS TRANSFER SERVICE COULD SAVE YOU BOTH MONEY AND TIME!!
This Free service enables you, our Customer, to purchase your job materials at any Cashway Centre that's convenient to you...and arrange to pick them up at the Cashway Centre closest to your actual building site. Learn how it can work for you, it could save you both money and time! Delivery, if required, is available at reasonable rates.

CLEARANCE SAVINGS!

AS AVAILABLE! WHILE THEY LAST! HURRY! HURRY!

Every Item Not Necessarily At Every Centre...So Please Check Locally. All Items Offered First Come, First Served WHILE THEY LAST! Several Centres Also May Have Clearance Items Not Listed Here. Bargain Hunters, These Are For You!!

"MIRACLE GREEN" 10-6-4 FERTILIZER 40-LB. BAG!
REG. \$4.95
OUR PRICE **\$3⁹⁹** EACH
For lawns, vegetables, trees, shrubs, flowers, etc.!

7-7-7 "MIRACLE GREEN" FERTILIZER 40-LB. BAG!
REG. \$7.95
OUR PRICE **\$5⁹⁹** BAG
Dual purpose formula feeds your lawn while it kills off weeds!

"WESTCLOX" SMOKE DETECTOR WITH BATTERY!
REG. \$14.88
\$9⁹⁷ EACH
3-VOLT battery. A value that could save your life!

PER 50-FT. LENGTH! 1/2" PLASTIC GARDEN HOSE
OUR PRICE **\$2⁹⁹** ROLL

"SUTTON" MOTORIZED NO. 20000 TABLE SAW-REG. \$179.95!
3450 rpm 3/4hp Motor!
\$149⁹⁵
Top about 36"x20". Blade that cuts to depth of 2". Mitre gauge, etc.

GARDEN IMPLEMENTS!
STEEL RAKE..... **\$6⁵⁹**
GARDEN SPADE..... **\$7³⁹**
LAWN EDGER..... **\$5⁶⁶**

"WOLMANIZED" END CUT WOOD PRESERVATIVE
REG. \$4.55
\$2⁹⁷ GALLON
A special preservative sealer to protect Outdoor Wood. Keeps indefinitely...

FIBERGLASS PANELS 26"x95" CORRUGATED!
REG. \$7.39
\$5⁷⁹ EACH
Lightweight. Colours as available. For Fences, Carports etc.

3/4" PLYWOOD FACED 2 SIDES! ASST'D WALNUT TABLE TOPS 79¢ AND UP
Prices as marked. 24"x22", 12"x22" and 15"x31" sizes as available.

SCREWS! NUTS! BOLTS! BARGAIN BUYS FOR YOU!
49¢ - 89¢ EACH

"FLAHERTY" NO. 70 MODEL STEEL STORAGE BOX
Approx. 13-5/8" Long, 18" Wide, 10" High.
\$5⁸⁸
Rugged metal. Use for Power Saw storage, File Folders, etc.

RURAL MAIL BOX IN 1/2" COMB. BLUE & WHITE ENAMEL FINISH
18 1/2" x 7 1/2" x 9 1/2"
\$9⁹⁷
With red flag. Sturdy metal finished to endure the weather!

THIS BULLETIN IS YOUR GUIDE TO THE MANY VALUES AVAILABLE AT CASHWAY BUILDING CENTRES—KEEP IT AND REFER TO IT OFTEN!

CASHWAY

- AJAX (Toronto)
- ATWOOD
- BARRIE
- BEAMSVILLE
- BELLVILLE
- BRAMALEA/MALTON
- BRANTFORD
- BROCKVILLE
- BROOKLIN
- CHATHAM
- CORNWALL
- DUNDAS (Hamilton)
- ETOBICOKE (Toronto)
- GALT/CAMBRIDGE
- GRIMSBY (Hamilton)
- GODERICH
- HAMILTON
- HAWKESBURY
- HAZLEDEAN (Ottawa)
- HUNTSVILLE
- KINGSTON
- LAMBETH (London)
- LONDON EAST
- MIDLAND
- MILLIKEN (Toronto)
- MILTON
- NIAGARA FALLS
- NORTH BAY
- NEW LISKEARD
- OAK RIDGES (Toronto)
- OAKVILLE
- ORANGEVILLE
- OTTAWA EAST
- OTTAWA SOUTH
- OWEN SOUND
- PEMBROKE
- PETERBOROUGH EAST
- PETERBOROUGH WEST
- RENFREW
- RUTHVEN/LEAMINGTON
- SARNIA
- SAULT STE. MARIE
- SCARBOROUGH (Toronto)
- STONEY CREEK (Hamilton)
- SUDBURY
- TIMMINS
- WATERLOO
- WINDSOR

ADVERTISING ERRORS Although greatest care is exercised to avoid errors in Cashway Advertising, occasional errors do occur. Any such error will be clarified and corrected as soon as it is recognized and customers purchasing merchandise so affected will be advised immediately of the correct information. Colours in this bulletin are for illustration purposes only.
Suppliers: The Northern Life Temiskaming Speaker, Bramalea Guardian, Markham Economist, Ajax News Advertiser, Georgetown Independent, Acton Free Press, Millon Chronicle, Mississauga News, Oakville Journal, Stouffville Tribune, Oshawa Times, York Regional Topic, Shelburne Equity, Midland Times, Renfrew Mercury, Essex Free Press, Fort Perry Star, Almaguin News, Orangeville Banner, Orangeville Shopping News, Rexdale Times Review, Milton Review, Streetsville Review, Meadowdale Review, Vankleek Review, Shelburne Free Press, Barrie Banner, Etobicoke Guardian, Scarborough Mirror, Richmond Hill Liberal, Niagara Shopping News, Waterloo Independent, Kincardine News, Parry Sound North Star, Wednesday, September 10, 1980.

SEPT. 1980.

PRINTED IN CANADA