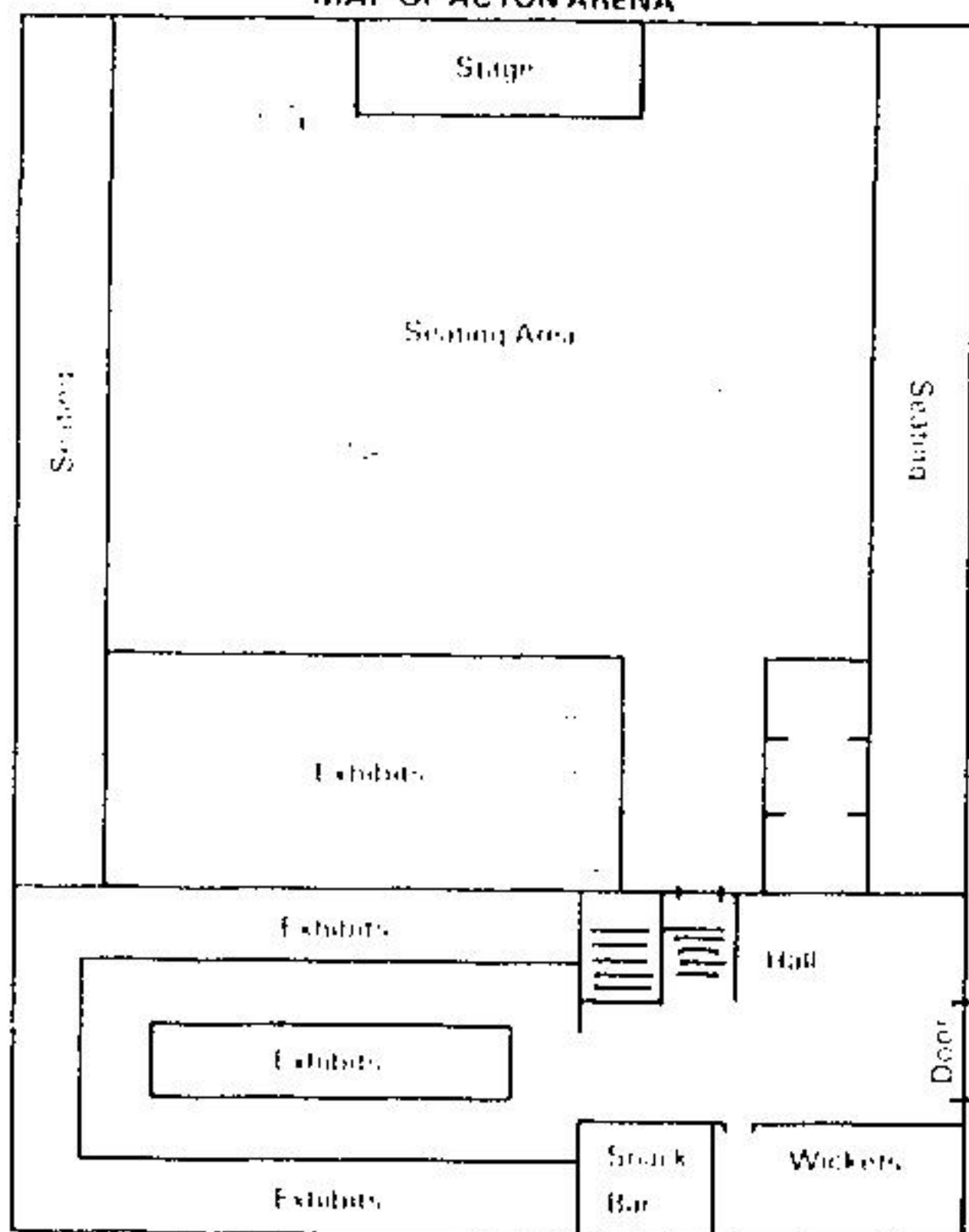


MAP OF ACTON ARENA



WEEKEND PASSES AVAILABLE AT

THE BANK OF NOVA SCOTIA
BANK OF MONTREAL
CANADIAN BANK OF COMMERCE
TORONTO DOMINION BANK
HALTON HILLS CREDIT UNION

FRIDAY/SATURDAY/SUNDAY
ALL THREE DAYS FOR
\$5.00 PER BOOK

Advance Ticket Sales From
September 1st to
September 19th, 1980

NO REFUNDS

THIS IS A \$7.50 VALUE

Acton Agricultural Society FALL FAIR PROGRAM

Friday, September 19th, 1980

Gates open at 12 noon

Admission: Adults and Students \$2.50. Children \$1.00

Parking \$1.50

ARABIAN HORSE SHOW

OPENING PARADE WITH THE ACTON CITIZENS' BAND
WITH A FULL MIDWAY IN OPERATION

HEAVY HORSE PULL 6:30 P.M.

Poultry exhibits with many exotic types of birds
with a wide range of colours

also

The floor exhibits in the arena will include: schoolwork, baking, domestic science, canned and preserved products, plants and flower displays, fruits and vegetables, junior exhibits, homecrafts, and many other interesting displays

In the hall area, you will find a large display of exhibits from within the Acton area

FAMILY
ENTERTAINMENT
VARIETY SHOW
8 P.M.

in between the show is the

MISS ACTON FAIR QUEEN CONTEST
a new Queen for 1980-1981 will be chosen by the judges.

BABY SHOW

SATURDAY at 1.30 p.m. sharp at the arena

COMMITTEE: Mrs. G. Cobham, Mrs. R. Cooksley, Mrs. C. Aitken, Mrs. W. Linham, Mrs. R. Hignett.

Registration in the Arena, Saturday, September 20, 12.15-1.15 p.m. Babies need not accompany parents for registration.

Pre-registration also at Toddlers to Teens Shop from Tuesday, September 9th, 1980 to Thursday, September 16th, 1980.

Twins 0-2 years Class 1

Triplets 0-2 years Class 2

Class 3A--Girls 13-18 months

3B--Boys 13-18 months

4A--Girls 7-12 months

4B--Boys 7-12 months

5A--Girls 4-6 months

5B--Boys 4-6 months

6A--Girls 0-3 months

6B--Boys 0-3 months

The donors are as follows:

Acton Pharmacy Limited

Acton IGA Foodliner

Greenock Women's Institute

Bannockburn Women's Institute

Dublin Women's Institute

Toddlers to Teens

Mr. and Mrs. G.M. Cobham

Acton Agricultural Society, Ladies Division

Glenlea Drug Mart

Larry's House of Buys