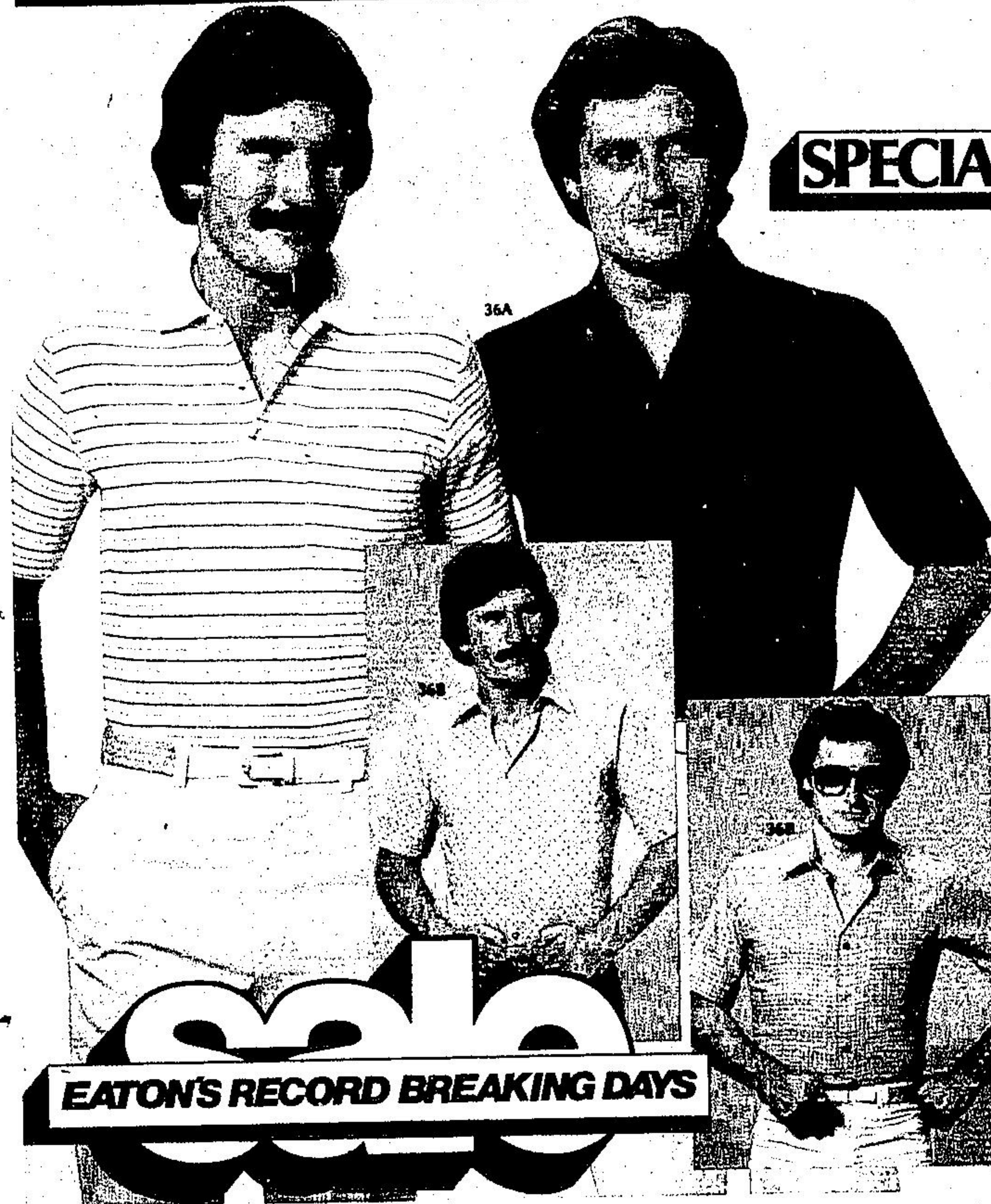


# 25% OFF POLO SHIRTS

# LOTS OF COOL STYLES!



## SPECIAL PURCHASE

Super Summer values

Eaton reg. 8.00 to 24.00, Each

### 5<sup>99</sup> to 17<sup>99</sup>

(36A) Crew-necks, V-necks, open Italian-style collars and placket styles. Solids and stripes. S. to XL.

(DEPT. 428)

Eaton sports shirts

Eaton price, each **8<sup>99</sup>**

(36B) Prints and checks in polyester-and-cotton blends. Full placket front, straight bottom. Blue, beige, grey. S. to XL.

(DEPT. 428)

## SAVE 25%

Assorted sports shirts

Eaton reg. 18.00 to 28.00, Each

### 13<sup>49</sup> to 19<sup>99</sup>

(36B1) (Not shown.) Short sleeve knits and woven styles in blue, brown, beige or white checks and plains. Sizes S. to XL.

Action gear on the go

Eaton reg. 7.50 to 20.00, Each

### 5<sup>49</sup> to 14<sup>99</sup>

(36B2) (Not shown.) Tank and tennis tops, T-shirts and shorts in cotton-and-polyester blends. Solids with contrast trim. S. to XL.

Swim trunks and tops

Eaton reg. 10.00 to 55.00, Each

### 7<sup>49</sup> to 39<sup>99</sup>

(36B3) (Not shown.) Solid or patterned Lycra, boxer and basketball style trunks. Beach tops and Cabana sets. Great colours. S. to XL.

(DEPT. 428)

Personal Shopping Only.

Not all styles in all stores. Not available at Warehouse Store.

### EATON'S RECORD BREAKING DAYS

All items available at or through the Eaton Stores listed below (unless otherwise specified) until Saturday, July 12, 1980, or while quantities last:  
Phone 861-5111. TTY only 591-2345 (Telephone for the deaf). Eaton's - Toronto Eaton Centre, Yorkdale, Scarborough, Sherway, Don Mills, Shoppers' World, Warehouse Store (Sheppard Ave., W.), Bramalea, Oshawa, Rockwood, Rexdale, Dufferin, Yonge-Eglinton, Victoria Park, Gerrard Square.

# EATON'S

*Alive for Summer*