

Students work for CVCA

The provincial government has granted \$33,000 to the Credit Valley Conservation Authority for the Ontario Experience Summer Program, a project providing jobs to high school, college and university students. The CVCA will employ 26 students for periods ranging from eight to 13 weeks.

Although most of the work is park maintenance, creek clean-up and erosion control, students also build and maintain playgrounds, nature trails, boardwalks, foot bridges, wood shelters and tackle other jobs to improve the 418 square miles of the Credit Valley watershed. The Province this year has reduced program funding to three-quarters of the 1979 program in line with the policy of government spending restraint. This is the tenth year of operation for the program.

Calf Club

Name parts of a cow

by Brad Ottaway
The June meeting of the Acton 4-H Calf Club was held June 4 at South Braye farm, owned by Arthur Linham.

Junior members were called upon to name parts of a cow and show where they were located (i.e. brisket, dew claw, pin bones etc.).

The Club then judged a class of mature holstein cows and they were officially placed by Rob Murray.

Edwin Duncan from the OMMB (Ontario Milk Marketing Board) was the guest speaker. Mr. Duncan talked to the Club about how the OMMB worked and answered questions.

Angers

Bovis. . . .

(Continued from page 3)

ected. He said the town has turned down a plaza which would bring in more assessment and other levels of government blew the deal to put a new firm into the closed Diston plant. Another resident noted the deal for Heller's to move to Diston that fell apart earlier wasn't Halton Hills fault and talks are back on for Heller's to move to the closed factory. Nobody will be able to afford to live here in the not too distant future, Smith warned.

King said he knows there are discrepancies in the local tax structure and the only option for change the province is giving towns its market value assessment. He noted people can appeal their assessment.

Johnson asked if it would do any good for the entire subdivision to appeal their assessment and Levy answered it wouldn't hurt a bit. Levy added even if the council said yes to market value that night it would be 12 to 18 months before people felt the effects of the changes.

A resident urged council use tax incentives to bring industry here and Richardson replied that can't be done anymore. He said the town can help in non-financial ways, like the mayor did in aiding the revival of Heller's talks regarding Diston earlier this year, but that is all.

Morris was worried if market value helps Actonians but hurts a lot of Georgetown homeowners council wouldn't implement it. Levy said it hurts and helps the same proportion of people in all wards of Halton Hills.

Councillor Terry Grubbe noted market value will help her pay lower taxes, but she had to support the study because Queen's Park couldn't answer her own questions.

THE ACTON FREE PRESS
Authorized as Second Class Mail Postal Registration Number - 0515

CASHWAY

YOUR DO-IT-FOR-LESS BUILDING CENTRES

ALL PRICES EFFECTIVE UNTIL 6 P.M. TUESDAY JUNE 24th - SHOP AND SAVE!

NOTE: Should Inventories Of Regularly Stocked Items Be Sold Out Due To Unforeseen Demand, Rain Checks Will Be Issued And, Eventually, You Will Be Supplied At The Advertised Price.

The Values Are

Summer Sizzlers

...For Home & Cottage!

With Insulated Glass And Screen! Aluminum

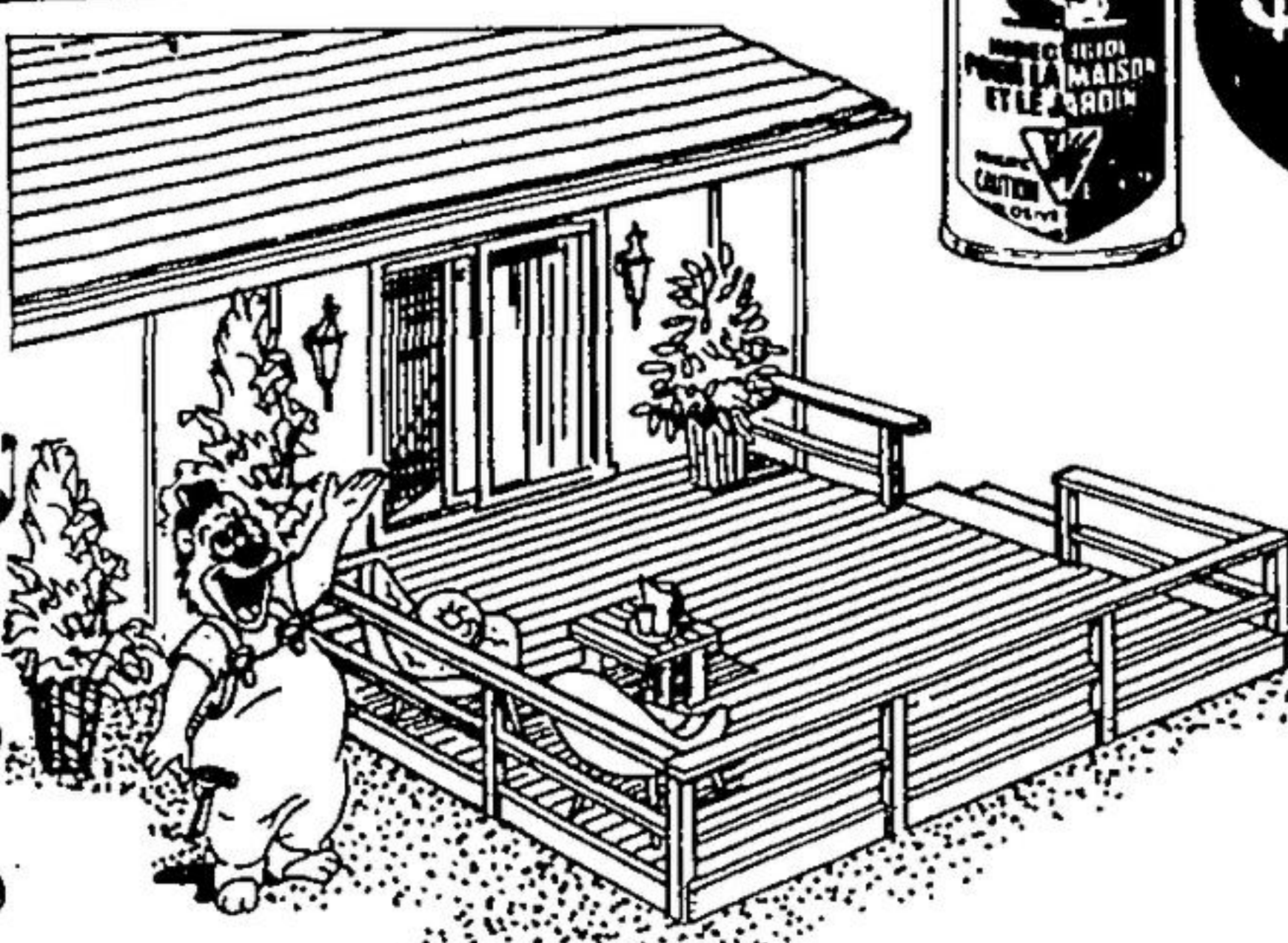
Patio Doors

400 Series with 3/16" Tempered Glass. Regular Mill Finish 8'8" - 3/8" HIGH.

5'x6'8" \$297.00
Reg. \$329.00

6'x6'8" \$319.00
Reg. \$359.00

White or Brown painted finish at extra cost of \$10.00



8'x12' Patio Deck

Your 'Living Room' In The Great Outdoors!

Build it from Spruce or from Outdoor Wood. Either way, you'll add to your enjoyment of the outdoors. Prices featured are for all materials including 2x4 Decking, six 4x4 8-Ft. posts, Nails and one kit of DECKIT hardware (described below) Railing and Stairs extra.

USING CONST. SPRUCE \$149.88

USING OUTDOOR WOOD \$259.88



"DECKIT" Hardware Kit For Patio Decks

Now Clearing!

\$5.88 each

Includes all the hardware you need to build an 8'x12', 8'x14', 8'x16' or 12'x12' Patio Deck. Instructions with patio deck plans are included.

Wood Stains

Our Own Brand! Cedar, Walnut or Redwood colours as stocked.

Reg. \$6.88 gallon \$6.49 gal.

"Disston" Hand Saw

26" x 8 point Model Straight back style with accurately set teeth.

Reg. \$10.89 \$6.88 each

"Stanley" Hammer

Model C311 1/2. Hardened steel head with bell face. 16 oz.

Reg. \$4.29 \$3.88 each

We have Nails For Almost Every Building Need. See Our Selections. 1 lb. to 50 lb. packages!

Floor Tiles

PEEL 'n STICK 12"x12"x1/16"

The quick, easy way to create a new floor. Just peel off special backing and apply. Colours as available.

Save Now! Reg. 39¢ \$35 tile

CARTON OF 45 REG. \$17.55 \$16.75

"Raid" House And Garden Bug Killer

350g Aerosol



\$2.97 can

Per 66-Pound Bag! Premixed Cements

Just Add Water And Use!

Concrete Stone Mix \$2.19 bag

Sand Mix Or Mortar Mix \$2.29 bag

Save On Assorted 4' x 8' Panellings!

Reg. \$7.48 \$6.49 panel

Prefinished 200 Series panels. Faces as available locally. Handsome choices for home and the cottage!

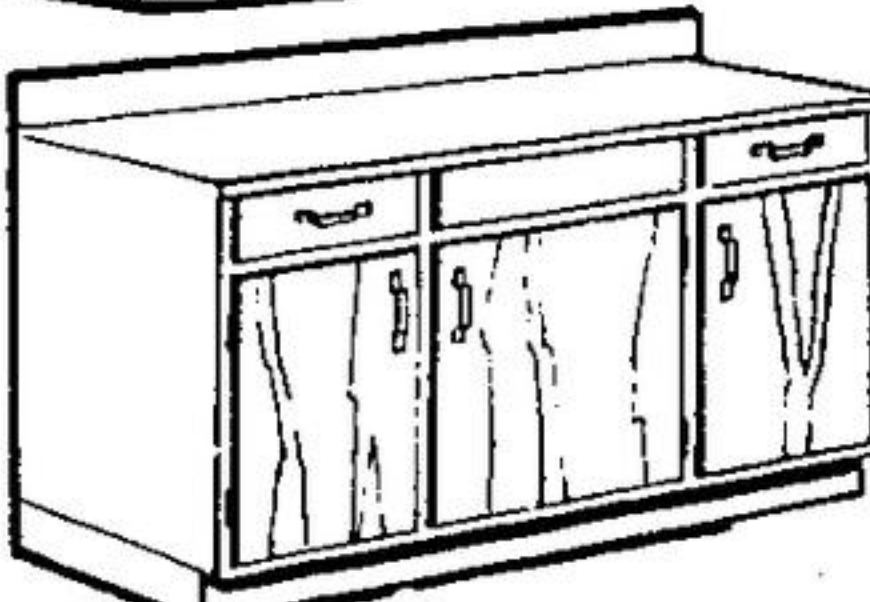
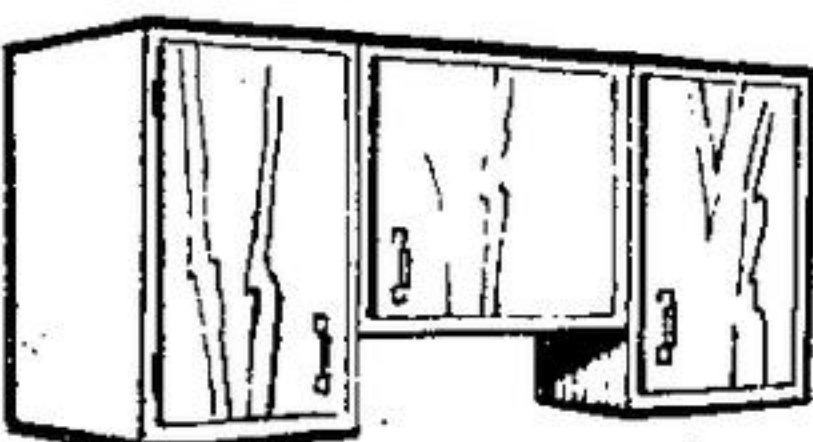
"Hampton" Prefinished Kitchen Cabinets

Ideal For The Cottage! Choose From Three Popular Lengths!

54" Set \$229.00
Reg. \$258.91

72" Set \$269.00
Reg. \$301.72

96" Set \$349.00
Reg. \$388.18



Upper cabinet unit is recessed for headroom above normal sink area. Base cabinet unit is ready for counter top, sink, faucets, etc (not included in our prices).

Counter Tops

As Low As \$2.99 Per Foot!

6-Ft. \$17.94 up

8-Ft. \$23.92 up

10-Ft. \$29.90 up



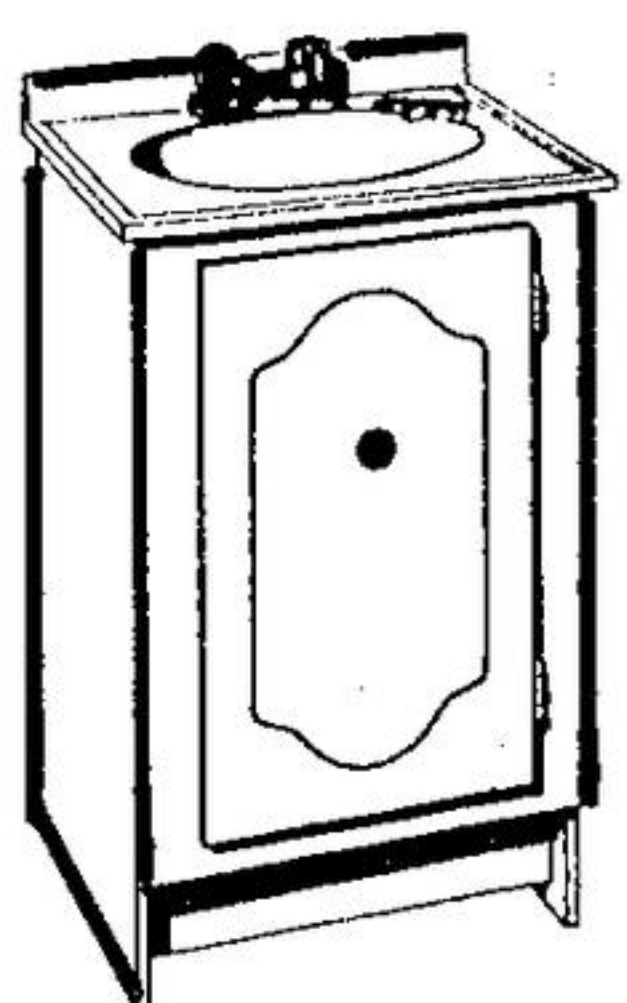
Stock Sizes, Patterns and Colours strictly as available...please check locally. End caps are extra. We feature a wide selection at competitive prices!

20"x16" Vanity Complete With Top!

Attractively Styled Package Includes Cultured Marble Top With Integral Soap Dish.

The White cabinet is knocked down and ready to assemble. Faucet is extra.

Reg. \$59.95 \$53.97



OPEN WEEKDAYS 8:30 A.M. - 6 P.M.; SAT. TO 5 P.M.; THURS. & FRI. TO 9 P.M. IN SOME AREAS THESE HOURS COULD VARY SLIGHTLY. PLEASE CHECK.

Shop Now with Credit!

25 STEELES AVE. EAST (just west of Hwy. 25) MILTON 878-8487



Clearance Continues! Light Fixtures

Assorted Styles as available. Now clearing to make room for in-coming new light fixtures.

25% OFF

50 Cashway Centres Throughout Ontario...There's One Near You!!