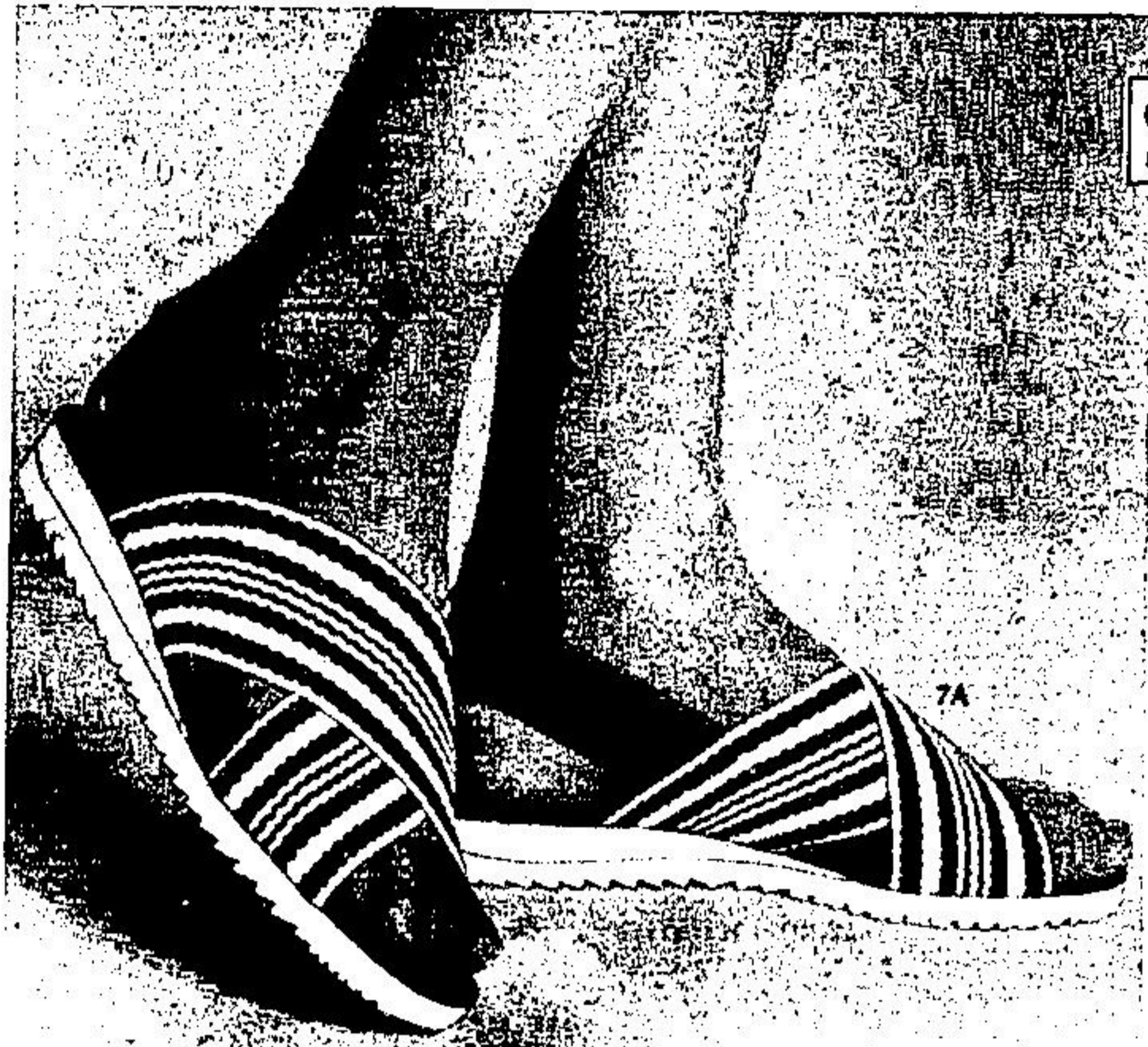


SAVE 25% TO 34% PLAYTEX BRAS AND BRIEFS



7B

Save 2.00
Easy-going casual
indoors or out
Eaton reg. 8.00, **5.99**
Pair

(7A) 011 — Elasticized vamp. Well made, with canvas insole, composition traction sole. Full sizes 5 to 9. Red, navy, beige.

Panti-hose 4-pack
plus 2 BIC shavers
Eaton price, complete **4.99**

(7B) 003 — Four pairs CanCan sheer sandalfoot panti-hose. Sizes average, tall, extra tall. Shades include Mocha, Roma, Palma. Plus the complimentary shavers.

Secret knee-highs
at low prices
(7C) 005 — Sandalfoot with 'soft top'. Beige, taupe, mocha. One size fits 9 to 11. Style 475. Eaton reg. .89,

6 pairs 4.49

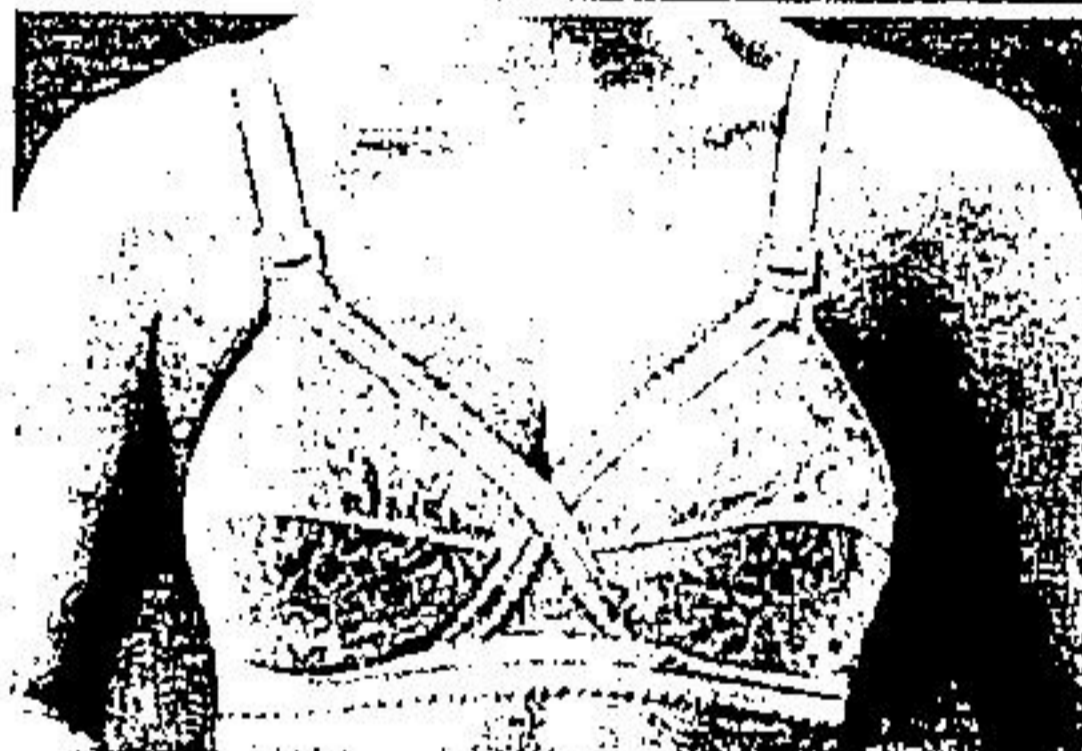
(7D) 005 — Queen-size, with 'soft top' and reinforced toe. Beige, mocha, taupe. One size fits 9 to 11. Style 458. Eaton reg. .99,

6 pairs 4.99
(DEPT. 201)



Save 3.00
Cross-Your-Heart
bra/lace inserts
Eaton reg. 11.95, **8.95**
Each

(7E) 214 — Nylon tricot cups; sides/back in lacy nylon spandex. White or beige. Sizes 34 and 36, A and C cups; 34 to 38, B cup. Style 600.



Save 3.00
Cross-Your-Heart
cotton-lined bra
Eaton reg. 9.95, **6.95**
Each

(7F) 214 — Nylon lace cups; sides/back in nylon spandex. White only. Sizes 34 to 38, B cup; 34 to 42, C cup. Style 181.



Save 3.00
"Second Skin"
underwired bra
Eaton reg. 11.95, **8.95**
Each

(7G) 214 — Seamless moulded nylon tricot cups; sides/back in smooth polyester. White or beige. 34 to 38, B and C cups. Style 892.



Save 3.00
Front-fastening
"Second Skin" bra
Eaton reg. 10.95, **7.95**
Each

(7H) 214 — With seamless moulded cups in nylon tricot; polyester-and-spandex sides and back. White or beige. 34 and 36, A cup; 34 to 38, B cup; 34, C cup. Style 895.



Save 2.00
"Superlook" light
control brief
Eaton reg. 5.95, **3.95**
Each

(7J) 212 — In smooth nylon spandex. White or beige. Sizes small, medium, large. Style 982.
(DEPT. 609)

Phone 861-5111. Eaton's - Toronto Eaton Centre (main floor) - 201/609; Yorkdale, Scarborough, Sherway, Don Mills, Shoppers' World, Bramalea, Oshawa, Rockwood, Rexdale, Dufferin, Yonge-Eglinton, Victoria Park, Gerrard Square.