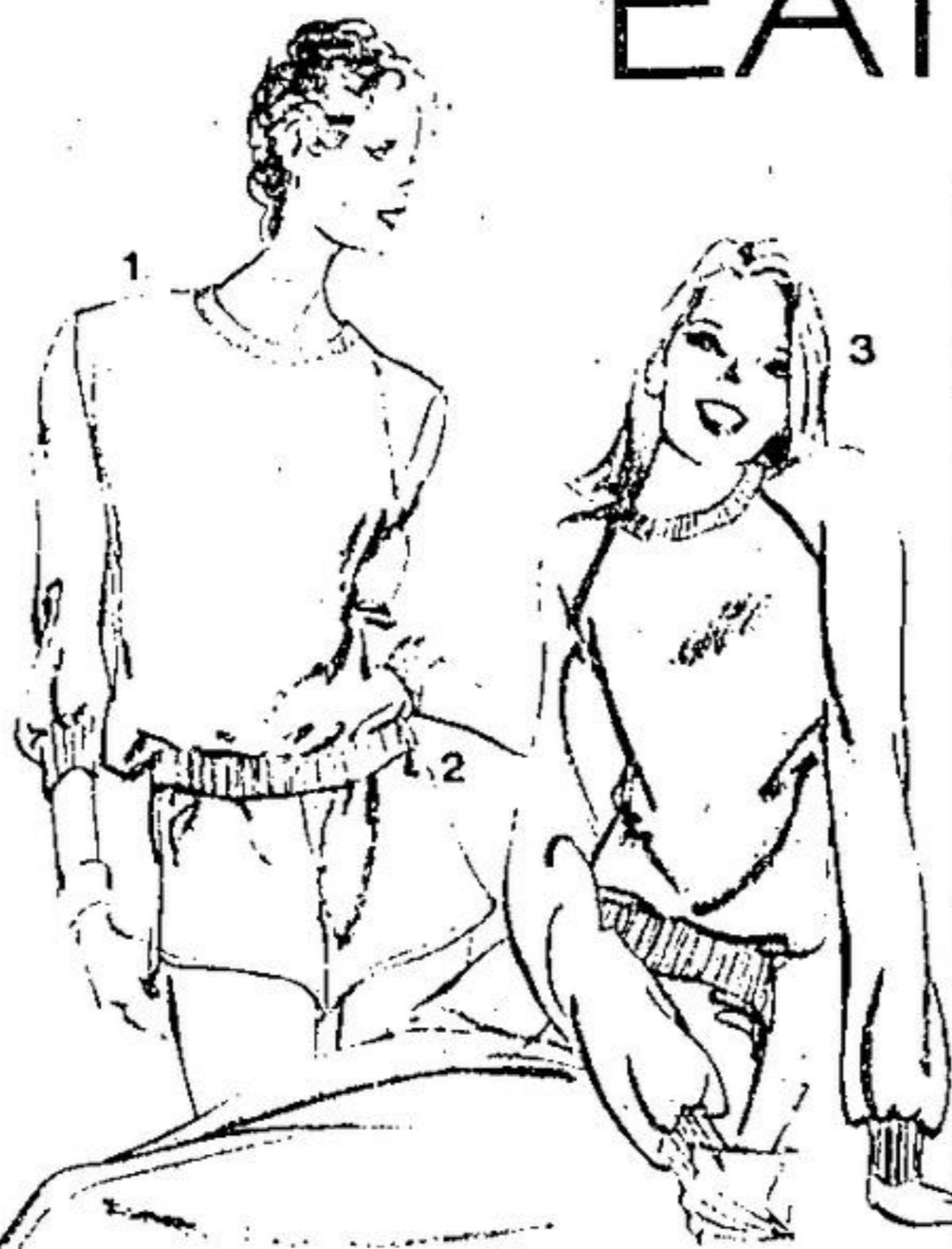


EATON'S

Team up with terry at Eaton's today. Terry is so terrific! Anytime. Anywhere. And Eaton's has it in a stack of variations. Terry that will turn heads all over town. Get a line on it today ... 861-5111.

- (1) 207 — Crew-neck top with 1/2 push-up sleeves. Yellow, white or royal cotton-and-polyester. Sizes S, M, L. Each 16.00
- (2) 207 — Terry shorts with elastic waist. In yellow, white or royal cotton-and-polyester. Sizes S, M, L. Each 12.00
- (3) 207 — Long-sleeved terry sweatshirt with contrast piping. Yellow/white (contrast is also yellow), white/royal, royal/white, cotton-and-polyester. S, M, L. Each 18.00
- (4) 207 — Pull-on style pant with elastic waist. Yellow, white, royal cotton-and-polyester. Sizes S, M, L. Each 20.00 (DEPT. 348)

Phone 861-5111 EATON'S — TORONTO EATON CENTRE (2nd floor) — 240-341/442; (2 below) — 741, (3 below) — 346, Yorkdale, Scarborough, Sherway, Don Mills, Shoppers' World, Bramalea, Oshawa, Rockwood, Rexdale, Dufferin, Yonge-Eglinton, Victoria Park, Gerrard Square

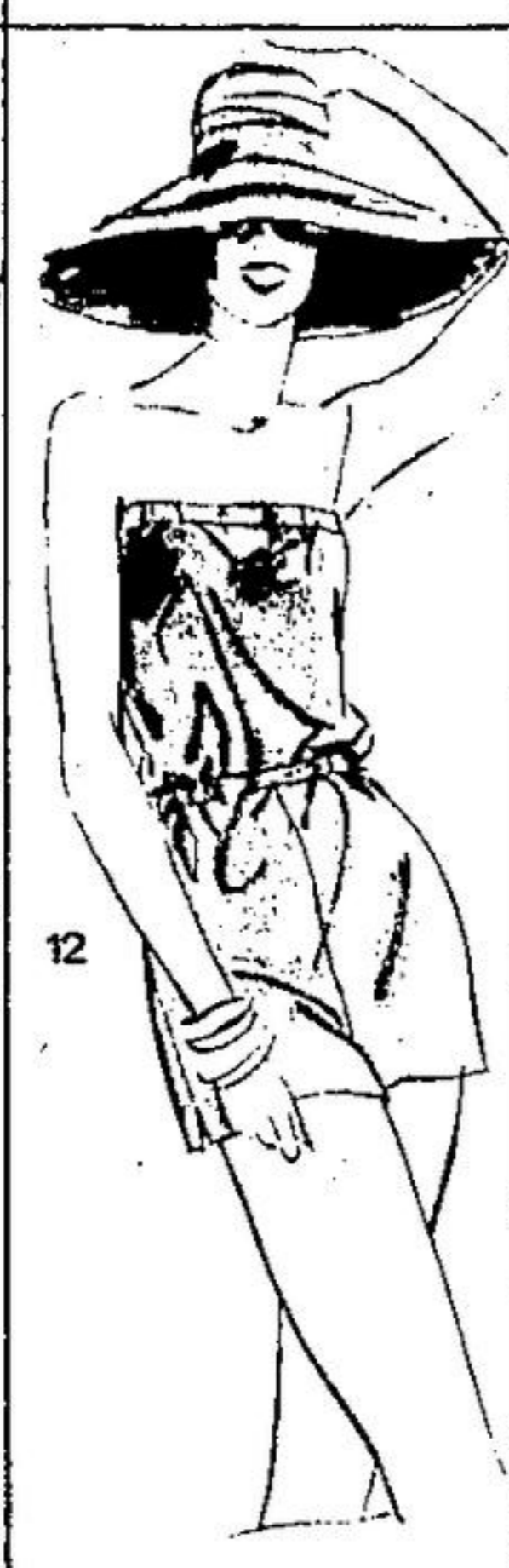


(5) 579 — Cool little polyester terry dress with scoop neck and self-tie belt. In orange/red, royal blue or yellow. Sizes 10 to 18. Each 24.99 (DEPT. 741)

(6) 357 — 2-piece short set. Top is crew-necked with contrast trim. Shorts are solid shades with elastic waist. In cotton-and-polyester. White with turquoise trim and white with yellow trim. Sizes S, M, L. 2-pcs. 28.00 (DEPT. 246)

(7) 308 — A bare little tube dress in polyester terry with multi-colored elastic at the top and waist. In red or yellow. Sizes S, M, L. Each 29.00 (DEPT. 341)

(8) 306 — Terry to wear day or night... polyester terry sundress with cover-up bolero jacket. In navy or red with white trim. Sizes 8 to 18. 2-pcs. 42.00 (DEPT. 341)



(9) 357 — Wrap-look sundress with elastic waist. Cotton-and-polyester. Turquoise or yellow with white trim. Sizes S, M, L. Each 30.00 (DEPT. 246)

(10) 357 — Cross-over front play suit in cotton-and-polyester. White with turquoise trim or yellow with white trim. Sizes S, M, L. Each 24.00 (DEPT. 246)

(11) 234 — Strapless tube dress in cotton terry. Elastic waist. In green, yellow or purple. Sizes S, M, L. Each 38.00 (DEPT. 442)

(12) 232 — Strapless cotton terry playsuit in green, yellow or purple. Sizes S, M, L. Each 28.00 (DEPT. 442)



1/2 PRICE!

FASHION BED COMFORTERS

Don't miss out on these super buys! We've slashed the prices in HALF on these jumbo bedding beauties! There is an excellent selection of bed brightening prints to choose from too! You'll find dramatic home fashion florals, conventional florals and a paisley geometric — all dreamy choices! All are super plumped with allergy-free polyester fill for sumptuous comfort. And the covers are cotton-and-polyester with soft brushed acetate-and-nylon backing. Come, pick the colour you want — the print you love at Eaton's today! Bring along your Eaton's account card and take home a collection for wedding gifts, shower gifts and for yourself.

Twin size
Eaton reg. 49.98,
24.99

Double size
Eaton reg. 54.98,
27.49

Queen size
Eaton reg. 69.98,
34.99

PERSONAL SHOPPING ONLY (DEPT. 436)

EATON'S — Toronto Eaton Centre (4th floor) — 436; Yorkdale, Scarborough, Sherway, Don Mills, Shoppers' World, Bramalea, Oshawa, Rockwood, Rexdale, Dufferin, Yonge-Eglinton, Victoria Park.



another Eaton Bedding Blockbuster!

<p>EATON'S — TORONTO EATON CENTRE Dundas and Yonge at the Subway Open Monday to Friday 10 a.m. to 9 p.m. and Saturday 9:30 a.m. to 6 p.m.</p>	<p>YONGE- EGLINTON Mon. to Fri. 9:30 a.m. to 9 p.m. Sat. 9:30 a.m. to 6 p.m.</p>	<p>DUFFERIN Dufferin and Bloor Mon. to Sat. 10 a.m. to 10 p.m.</p>	<p>ROCKWOOD Dixie and Burnhamthorpe Mon. to Fri. 9:30 a.m. to 9:30 p.m. Sat. 9:30 a.m. to 6 p.m.</p>	<p>WAREHOUSE STORE Weston Road and Sheppard Mon. to Fri. 9:30 a.m. to 9:30 p.m. Sat. 9:30 a.m. to 6 p.m.</p>	<p>SHOPPERS' WORLD Danforth & Victoria Park Mon. to Fri. 10 a.m. to 9:30 p.m. Sat. 10 a.m. to 6 p.m.</p>	<p>DON MILLS Don Mills Road-Lawrence Mon. to Fri. 9:30 a.m. to 9:30 p.m. Sat. 9:30 a.m. to 6 p.m.</p>	<p>SCARBOROUGH McCowan Rd. and 401 Mon. to Fri. 9:30 a.m. to 9:30 p.m. Sat. 9:30 a.m. to 6 p.m.</p>	<p>OSHAWA Mon. to Fri. 9:30 a.m. to 9:30 p.m. Sat. 9:30 a.m. to 6 p.m.</p>
<p>YORKDALE Dufferin and 401 Mon. to Fri. 9:30 a.m. to 9:30 p.m. Sat. 9:30 a.m. to 6 p.m.</p>	<p>SHERWAY Q.E.W. and Hwy. 427 Mon. to Fri. 9:30 a.m. to 9:30 p.m. Sat. 9:30 a.m. to 6 p.m.</p>	<p>REXDALE Islington and Rexdale Blvd. Mon. to Fri. 9:30 a.m. to 9:30 p.m. Sat. 9:30 a.m. to 6 p.m.</p>	<p>BRAMALEA Dixie Rd., Hwy. 7 Mon. to Fri. 9:30 a.m. to 9:30 p.m. Sat. 9:30 a.m. to 6 p.m.</p>	<p>GERRARD SQUARE Pape and Gerrard Mon. to Sat. 9:30 a.m. to 9:30 p.m.</p>	<p>VICTORIA PARK Victoria Park and Sheppard Mon. to Sat. 9:30 a.m. to 10 p.m.</p>	<p>PICKERING SHERIDAN Sheridan Mall Liverpool Rd. and Highway 7 Mon. to Fri. 9:30 a.m. to 9:30 p.m. Sat. 9:30 a.m. to 6 p.m.</p>		