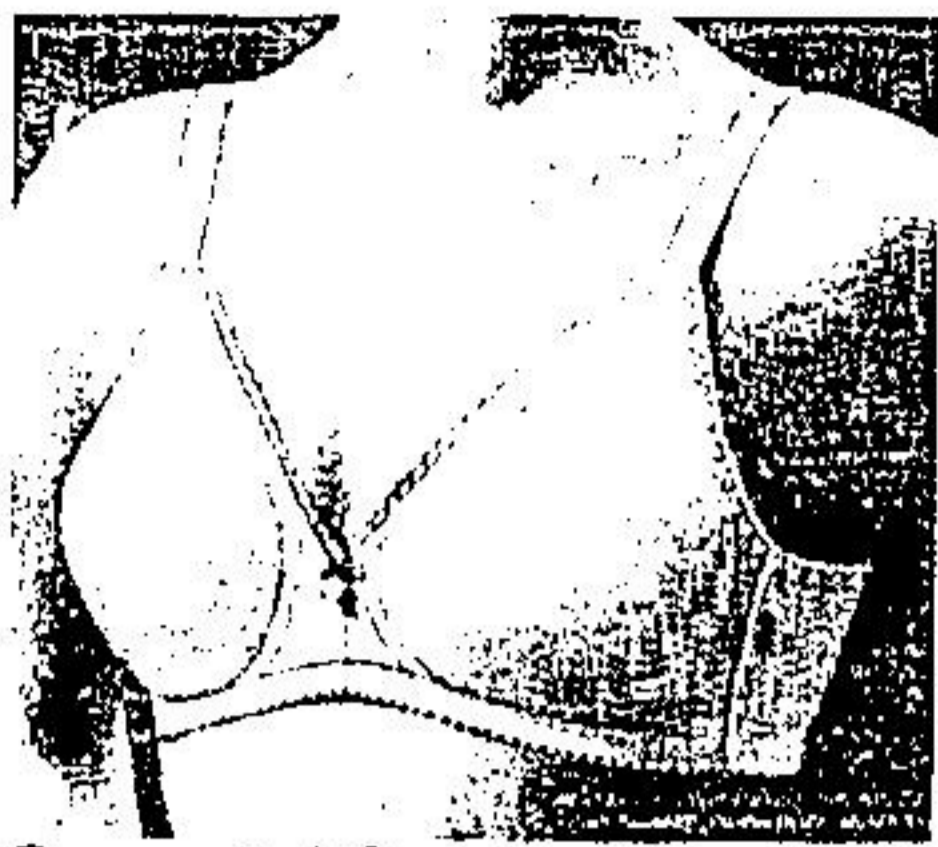




Save 3.00 on smooth, seamless bra by Wonderbra

Eaton reg. 11.50, Each **8.49**

(9A) 214 — Style 1137. Soft moulded polyester cups and stretch lace inserts. Nylon-and-spandex sides and back. White or beige. B and C cups, 34 to 38 (DEPT. 609)



Save 4.00. 'Not-a-Stitch-on' bra from Warners

Eaton reg. 11.00, Each **6.99**

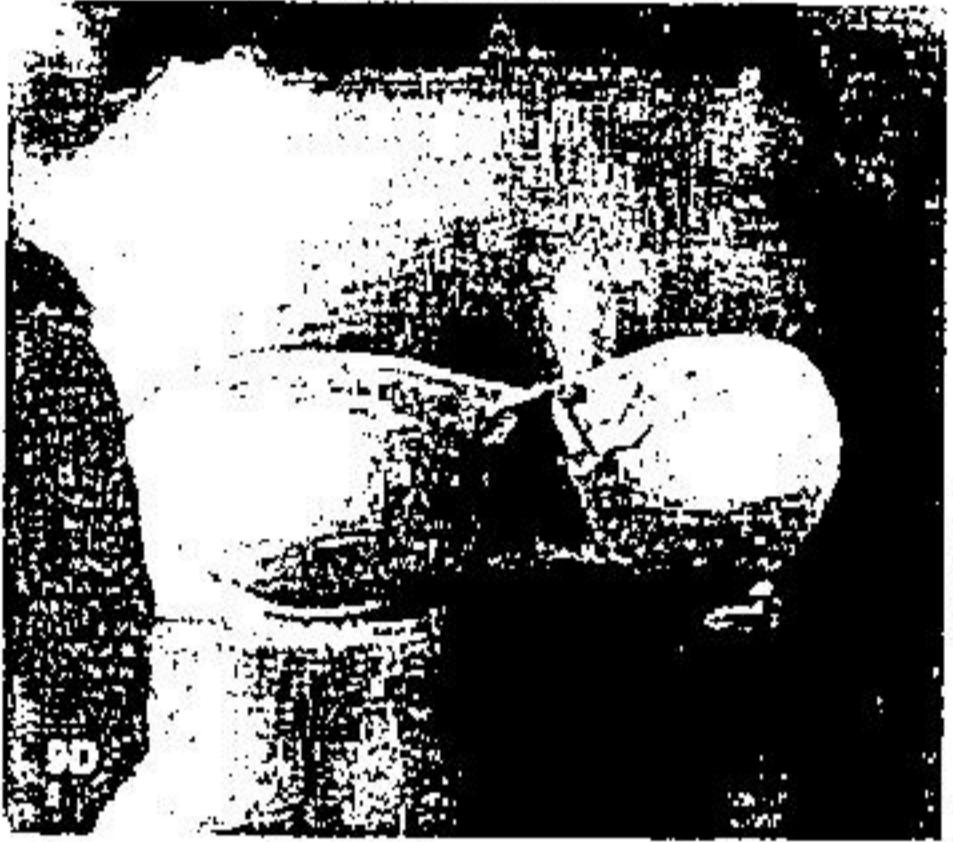
(9B) T214 — Style 1286. Lightly fibrefilled polyester bra with stretch Incol sides and back in Antron-nylon-and-spandex. Adjustable stretch straps. White or beige. Sizes 34 and 36A; 32 to 36B. (DEPT. 609)



Save 2.50 on Warner's bra for minimal coverage

Eaton reg. 6.50, Each **3.99 2 for 7.79**

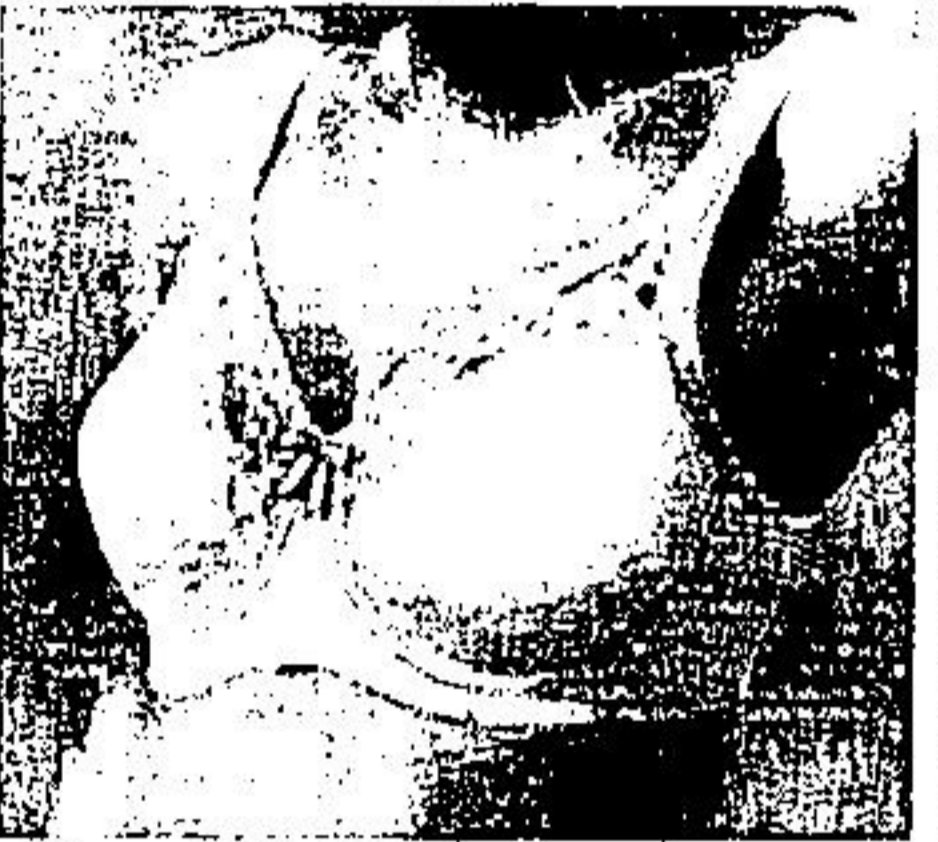
(9C) 214 — Style 2514. Soft stretchy nylon-and-spandex with nylon lace trim. White or beige. One cup fitting, sizes 32, 34, 36



Save 4.00 on comfy strapless bra by Warner's

Eaton reg. 12.00, Each **7.99**

(9D) 214 — Style 1016. Diana nylon cups, stretch lace trim. Nylon-and-spandex sides and back. Lightly underwired. Beige. B cup 32 to 36, C cup 34 and 36.



Save 3.50! Great support from Wonderbra

Eaton reg. 13.00, Each **9.49**

(9E) 214 — Style 1219. Underwired polyester cups. Nylon-and-spandex sides and back. White or beige. B and C cups, 34 to 38. (9E1) 214 — D cup, 34 to 38. Eaton reg. 14.00, Each 10.49



Save 4.00 on Warner's seamless soft cup bra

Eaton reg. 11.00, Each **6.99**

(9F) 214 — Style 1280. With moulded polyester cups. Nylon-and-spandex sides and back. White or beige. B cup 34 to 38; A and C cups 34 and 36

# Save 4.00

## Playtex Cross-Your-Heart bra

Eaton reg. 9.95, Each **5.95**

(9K) 214 — Style 165. With cotton-lined nylon lace cups. Nylon-and-spandex sides and back. Stretch straps. In white only. B cup 34 to 38, C cup 34 to 40 (DEPT. 609)

Phone 861-5111.

Eaton's - Toronto Eaton Centre (main floor) - 609, Yorkdale, Scarborough, Sherway, Don Mills, Shoppers' World, Bramalea, Oshawa, Rockwood, Rexdale, Dufferin, Yonge-Eglinton, Victoria Park, Gerrard Square.



Save 3.00 Wonderbra full figure support

Eaton reg. 11.00, Each **7.99**

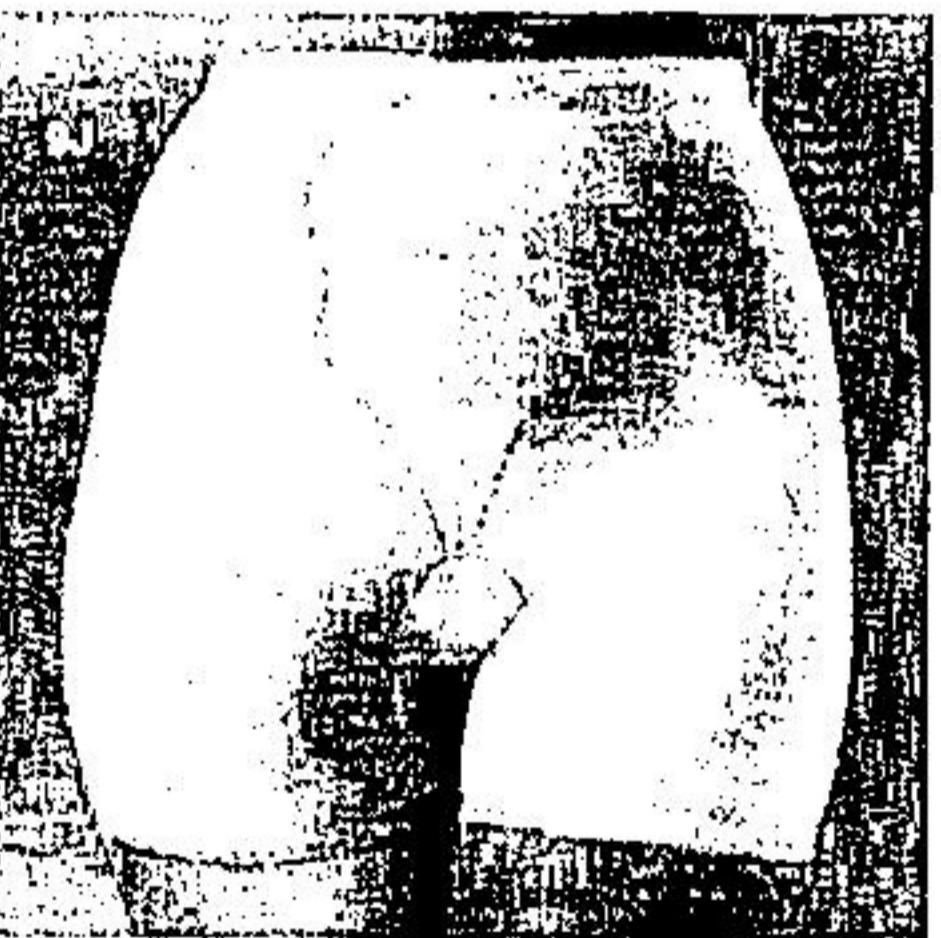
(9G) 214 — Style 1275. Nylon lace cups with nylon-and-spandex frames, sides and back. White or beige. B and C cups 34 to 38. (9G1) 214 — D cup, 34 to 40. Eaton reg. 12.00, Each 8.99



Save 3.50 Daisyfresh light control brief

Eaton reg. 10.00, Each **6.49**

(9H) 212 — Style 6907. Satin-faced nylon-and-spandex with tummy panel, cling elastic inner leg. White, beige. S, M, L, XL. (DEPT. 609)



Save 5.50 on Daisyfresh panty girdle

Eaton reg. 15.50, Each **9.99**

(9J) 212 — Style 6942. With average leg. In satin-faced nylon-and-lycra. Extra tummy and side panels. Beige. M, L, XL. (DEPT. 609)

Just say charge it on your Eaton's account