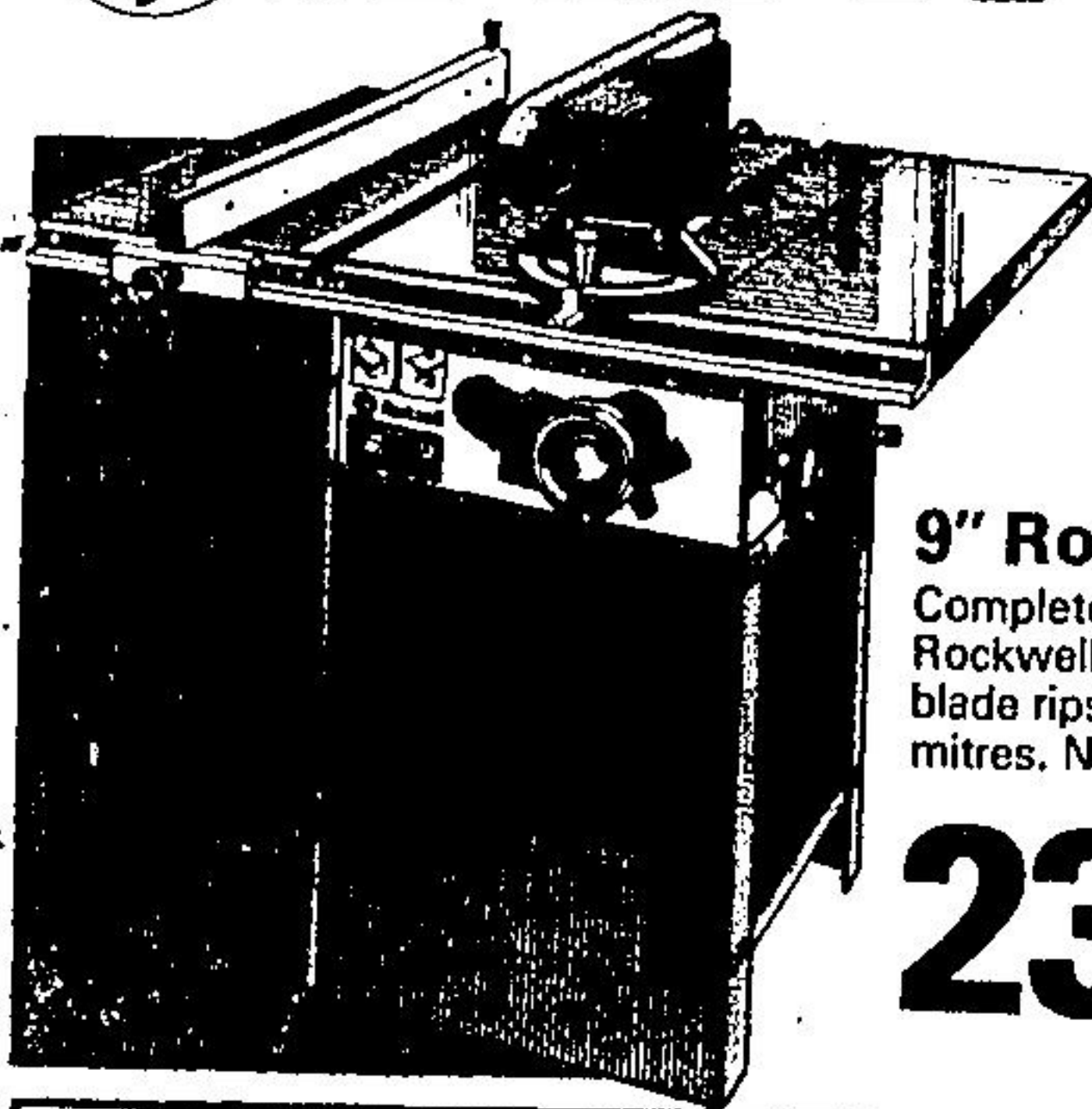




BEAVER



9" Rockwell Saw

Complete with motor, this Rockwell table saw with 9" blade rips, cross cuts and mitres. NO. 34-580.

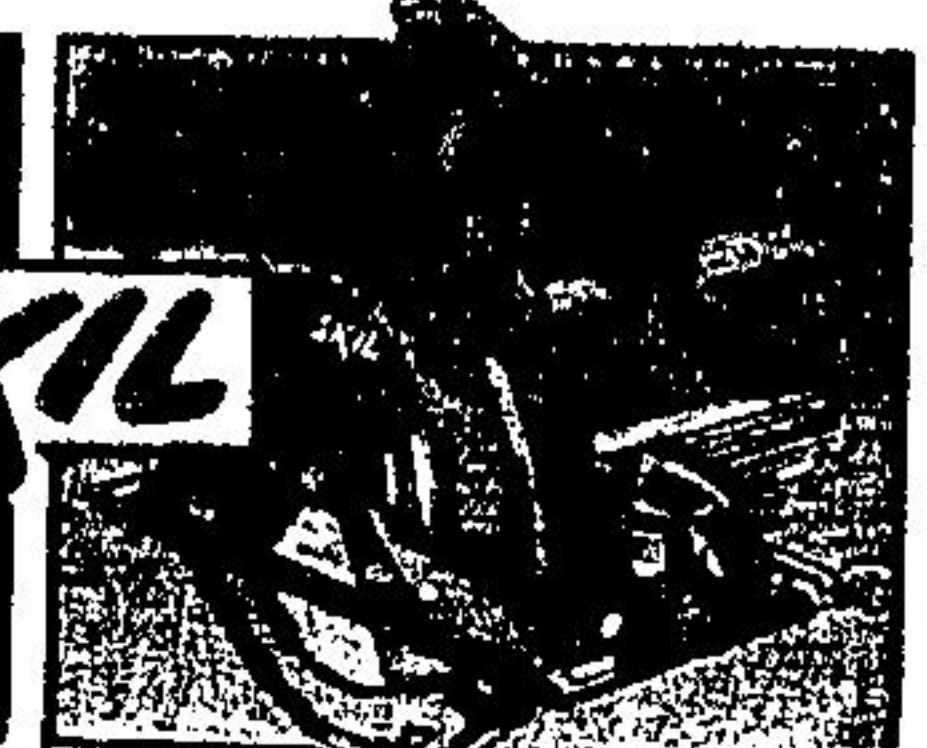
23995
Motor Included.



Skil Sander

A high speed, lightweight sander with ball bearing construction. Uses 1/4 standard size sanding sheet. 8,400 o.p.m.

3788
Reg. 39.99



7-1/4" Circular Saw

Has a dependable 10 amp motor with a rugged die cast aluminum housing. Cuts 2-3/8" at 90°. Easy to handle, tool

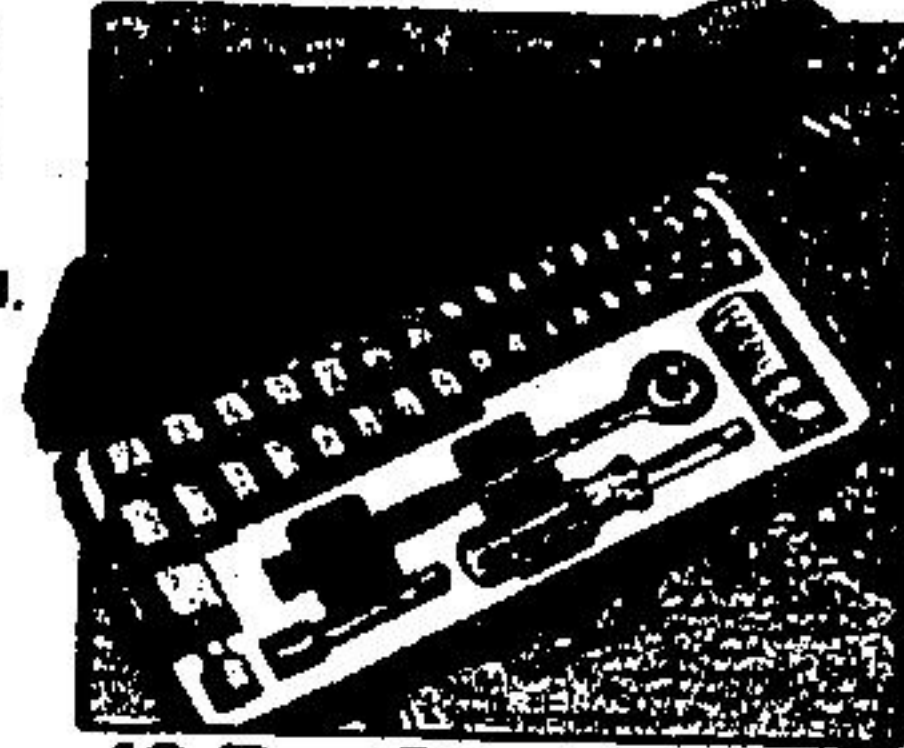
3999 No. 574C
Reg. 49.99



Skil X-tra Tool

Reversible, variable speed drill that hammer drills, power-chisels, scrapes paint, wallpaper, etc. All with just a twist of a collar.

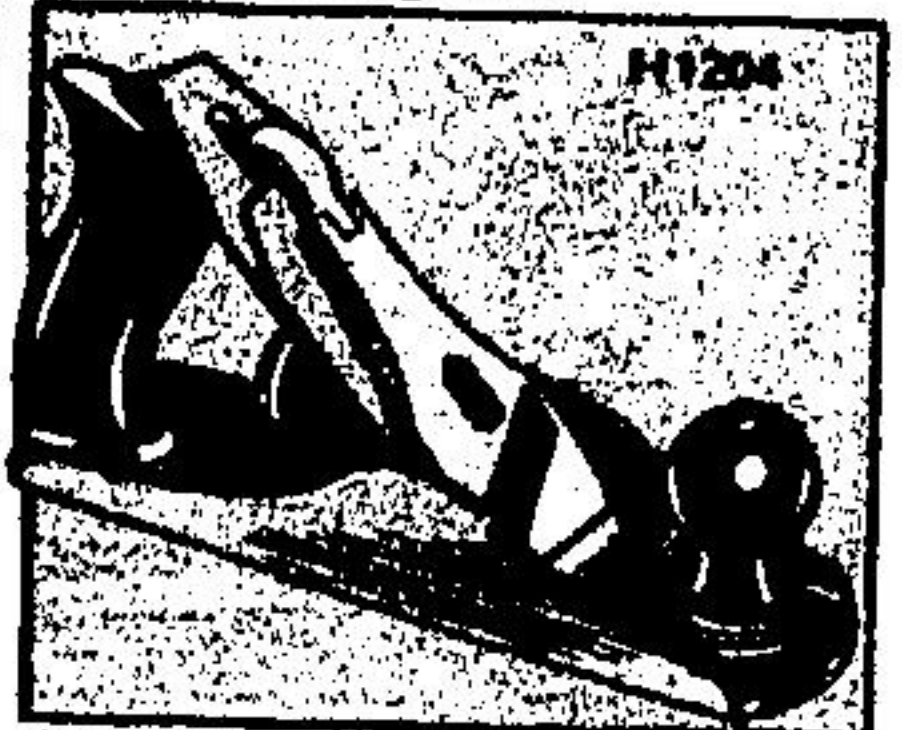
6995
Reg. 84.99



40 Pc. Socket Set

40 pc. drive/combination ratchet/socket set inch and metric size sockets. Includes ratchet handle, extension & much more!

1088
Reg. 16.88



9" Block Plane

Smooth plane with grey iron castings. Cutters are tempered tool steel and fully adjustable. Sides and bottom are ground smooth.

1588
Reg. 17.99

Winter Helpers From Beaver



ANT-1001
...
Booster Cable
...
399
Reg. 4.00



a) Claw Hammer

16 oz. claw hammer with wood shaft, ball face. **399**
Reg. 4.75

b) Lufkin Tape

5 metres long - A handy item for the workshop. **899**
Reg. 10.99

c) Screwdriver Set

Combination screwdriver with 12 bits. **888**
Reg. 11.59

d) Combination Square

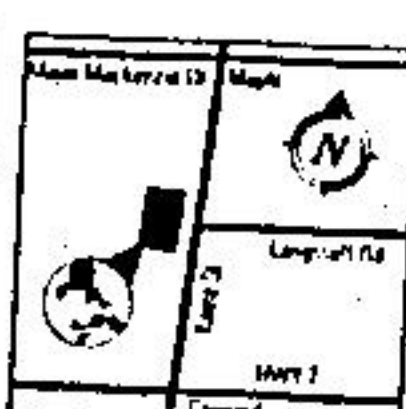
12" combination square. **579**
Reg. 6.86

e) Nicholson Saw

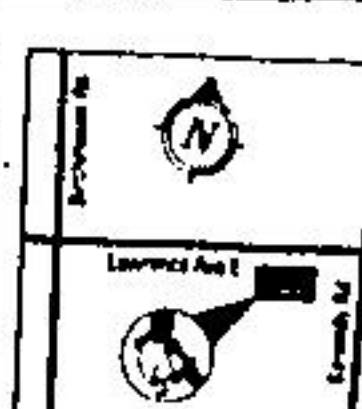
26" x 8 pt. saw with flat ground blade. **549**
Reg. 7.29



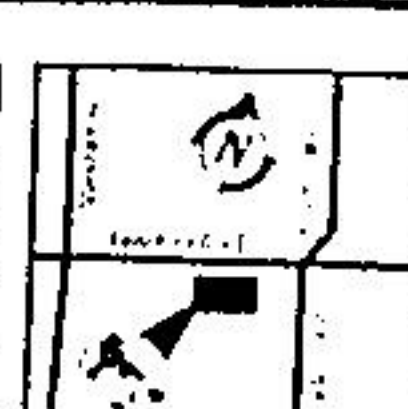
Brampton
Highway #7 at
Dixie Road
457-7100



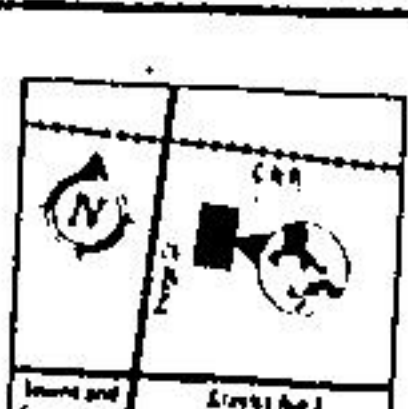
Keel
8500 Keel St.
Concord
661-9550



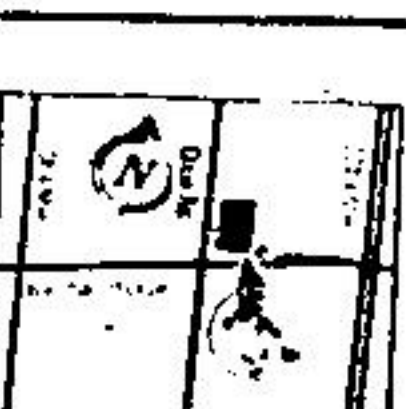
Scarborough
2251 Lawrence E.
at Kennedy
752-3490



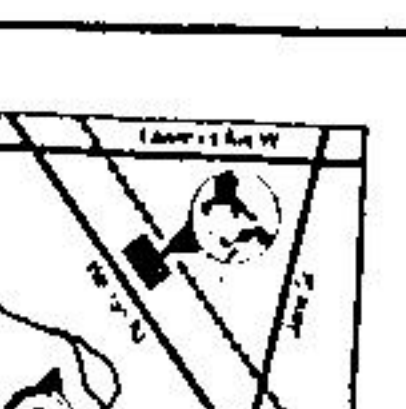
Scarborough
3701 Lawrence E.
of Markham Rd.
431-4333



Thornhill
7171 Yonge St.,
North of Steeles
881-5230



Rockwood Mall
Dixie and
Burnhamthorpe,
Mississauga
624-0695



Weston
1731 Weston Road
244-1128

Applewood
1077 N. Service Road,
Mississauga
278-8071

Georgetown
318 Guelph Street East
877-2234

Newmarket
474 Davis Drive
895-4537

Oakville
546 Trafalgar Road
845-3448

Whitby
419 Dundas St. East
688-5818 Whitby
688-2464 Toronto