



FIGURINE LAMP

About 18" high. Uses up to 60-watt bulb (not incl).

\$6⁹⁹



TWO-FIGURINE LAMP

18" high. Takes up to 60-watt bulb (not included).

\$6⁹⁹



MY LADY

3 pc.-LADIES' VANITY SET

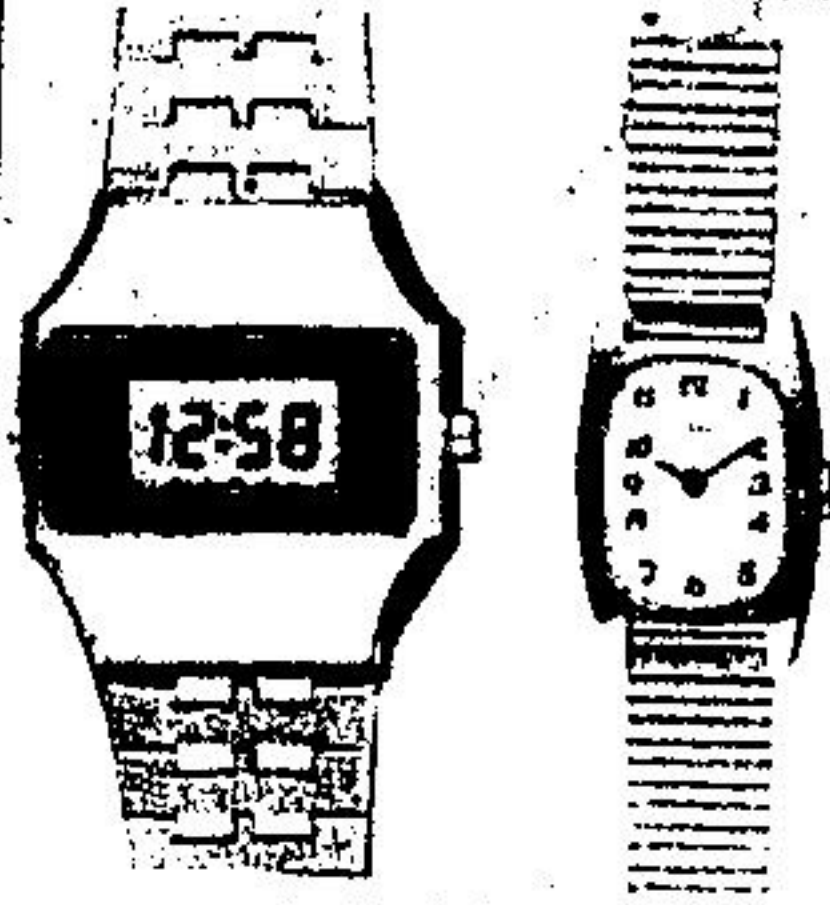
\$3⁹⁹



PHILIPS LITTLE MAC "FAST COOKER"

Sugg. Retail \$12.99

\$7⁹⁹



Ladies' - Men's Children's

TIMEX WATCHES 20% Off



Cordless, portable curler, heats quickly and is easy to use. Ideal for travel.

\$14⁹⁰



1/2 PRICE

ELEPHANT BOOK ENDS \$3⁹⁹ PAIR
ELEPHANT TOOTHBRUSH HOLDER WITH CUP \$2⁹⁹



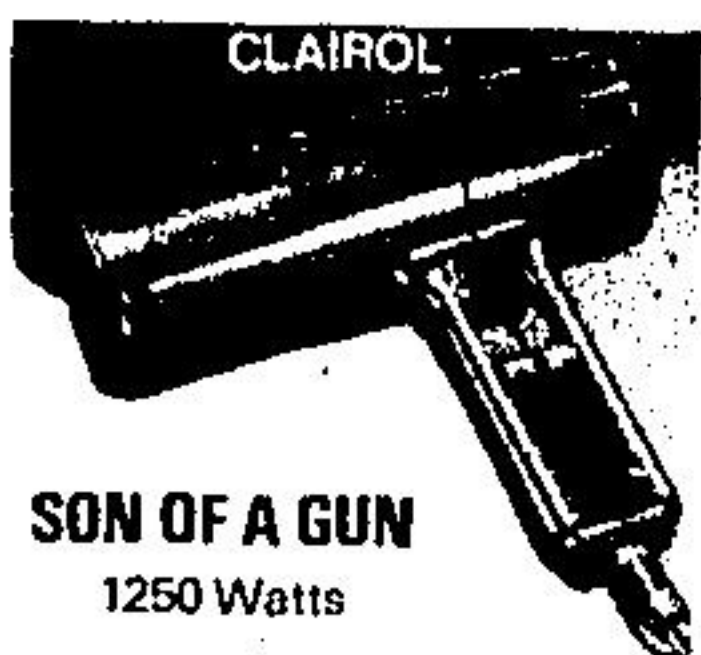
CANADIAN MADE TILE ON WOOD

WALL PLAQUES \$9⁹⁹ ea.



COPPER KETTLES in Gourmet or Colonial style. 1.9 L capacity. Nickel-lined. Gift boxed.

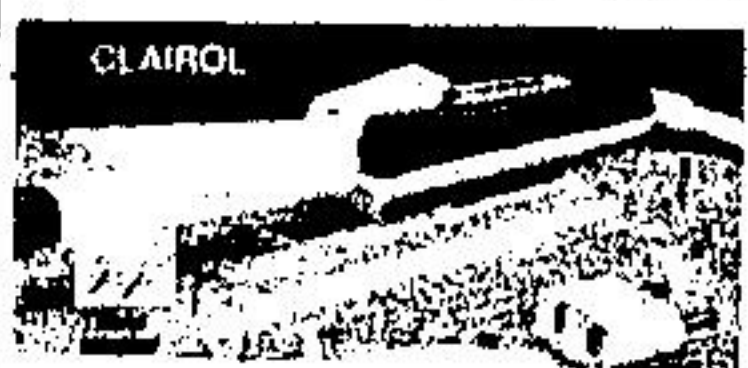
\$14⁹⁹



SON OF A GUN
1250 Watts

A high-velocity dryer with 1250 watts of power. Six heat/air speed settings for versatility; adjusts from 200 to 1250 watts. With air concentrator, hang-up loop. Compact and lightweight.

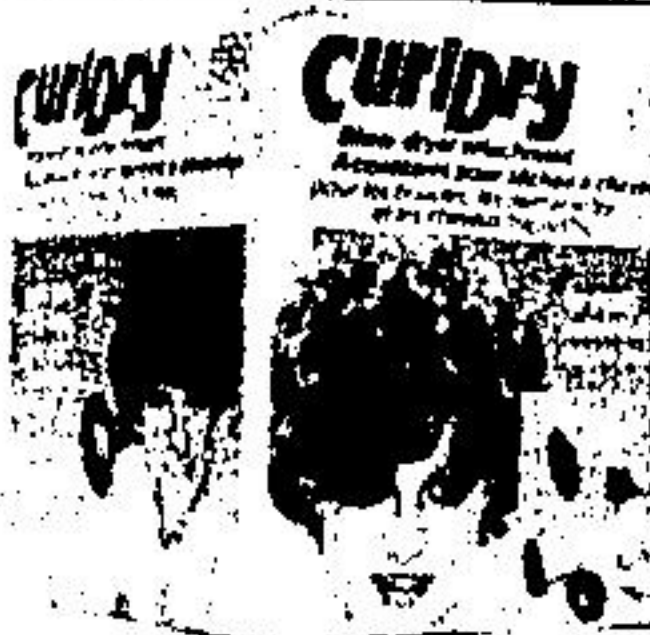
\$25⁹⁷



CLAIROL 'CRAZY BABY' COMPACT STEAM STYLER

For curls in 10 seconds! Dual voltage (120/220 volts) for use at home and abroad. Slide-on protective heat shield, travel adaptor.

\$18⁸⁸



CURL DRY BLOW-DRYER ATTACHMENT

\$7⁴⁹



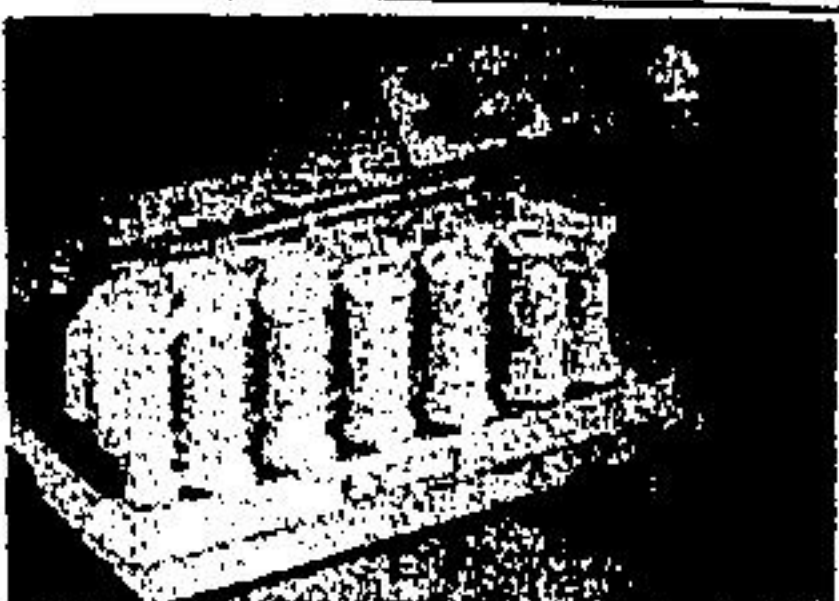
CLAIROL'S 'TENDER TWEEZ'
Takes the discomfort out of tweezing by removing hair instantly with the touch of a switch.

\$16⁸⁸



'THE FOOT FIXER' BY CLAIROL. Unique, professional-type foot bath/massager with thermostatically controlled heater to soothe tired, aching feet. Foot-shaped arch rests with hundreds of tiny "Vibra-Fingers". 4-way control dial.

\$47⁷⁷



CLAIROL KINDNESS 3-WAY HAIRSETTER
Choose a water mist, condition mist or dry set. Includes 20 rollers, clips plus conditioner.

\$28⁸⁸



NEW! 'BODY TENDER' SKIN AND NAIL CARE SYSTEM FROM GILLETTE. Totally immersible in shower or bath. Batteries included. 4 attachments for skin care - facial and body brushes, skin moisturizer, pumice stone, 2 attachments for nails.

\$16⁶¹



12" - 5 pc. TEA SET
Sugg. Retail \$33.95

\$24⁹⁹



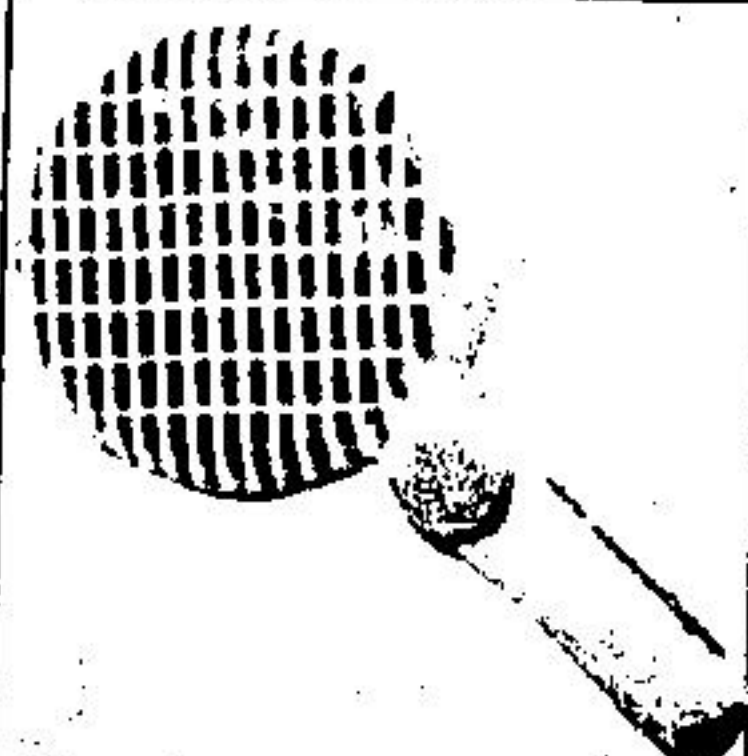
SAVE 3.70! GILLETTE PROMAX COMPACT 1200. Reduced from our 198-79 Annual Catalogue. The "do-it-yourself" professional styler/dryer. Extra wide nozzle for more shape, body and lift. Three heat levels and two speeds. Concentrator. A great little travelling companion.

\$22⁹⁷



GILLETTE PROMAX COMPACT 1000. Lightweight and easy to use. Turbo flow design. Three temperature and air flow settings in one switch. Adjust power from 500 to 1000 watts.

\$16⁴⁶



GILLETTE SUPERMAX CURLLYTOP
New and innovative hair dryer. Powerful 1200 watts for fast drying. Delivers large volumes of warm air with gentle air flow, so the shape of your curls and waves stays in. Wet exhaust area. Convenient hang-up ring on handle. Weighs 14 oz. Great for travel and comfortable to use.

\$24⁸⁸



SAVE \$8.00! GILLETTE SUPERMAX SWIVEL. Compact and lightweight styler/dryer. Adjusts from 500 watts to 1000 watts. Attachments include detangling comb and round brush.

\$18⁹¹



GILLETTE BODY PLUS CURL gives you a great new look in a flash! The cool bristles of the brush lift and separate to build lots of body. Dual voltage - 120/240 - lets you take it anywhere in the world. Positive temperature control for consistent curl. Cool tip. Swivel cord.

\$16⁹⁹ each