

CO-OP

SALE STARTS APRIL 11th UNTIL APRIL 28th, 1979

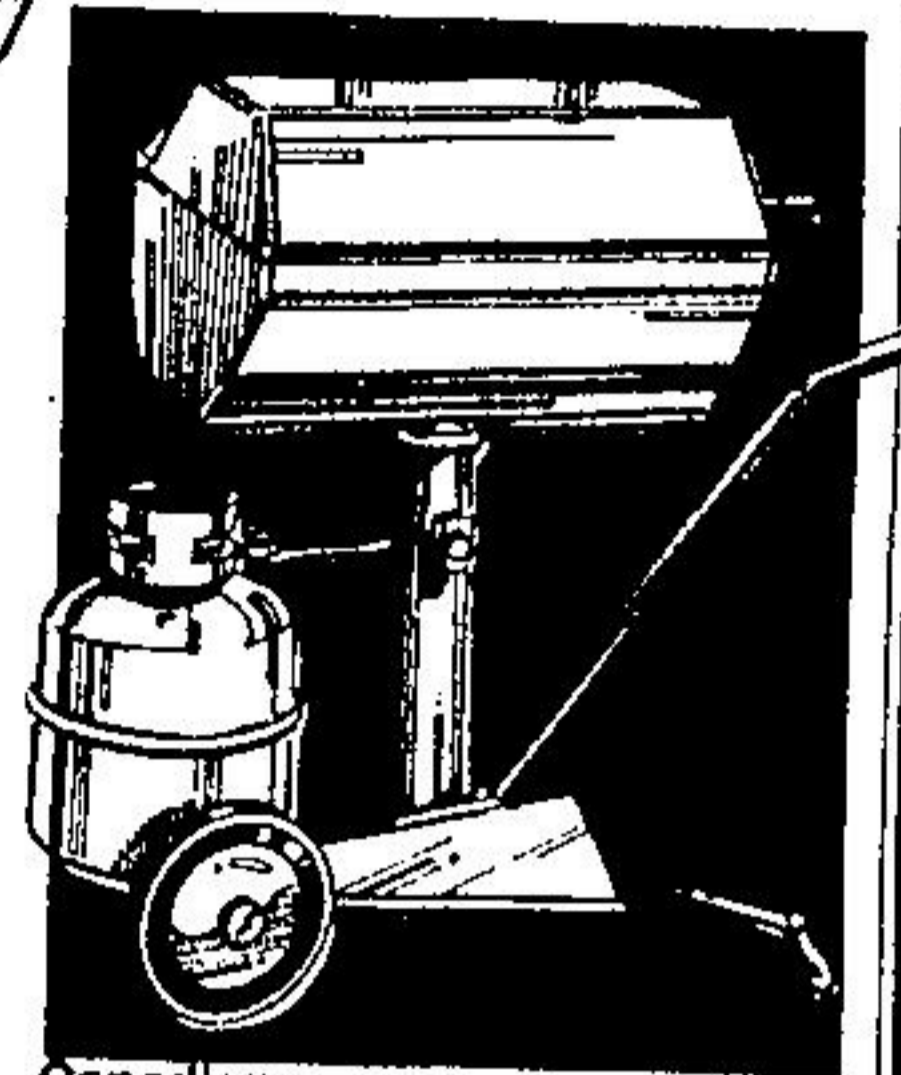
SPRING SALE

Tough Machines... For Tough Jobs!



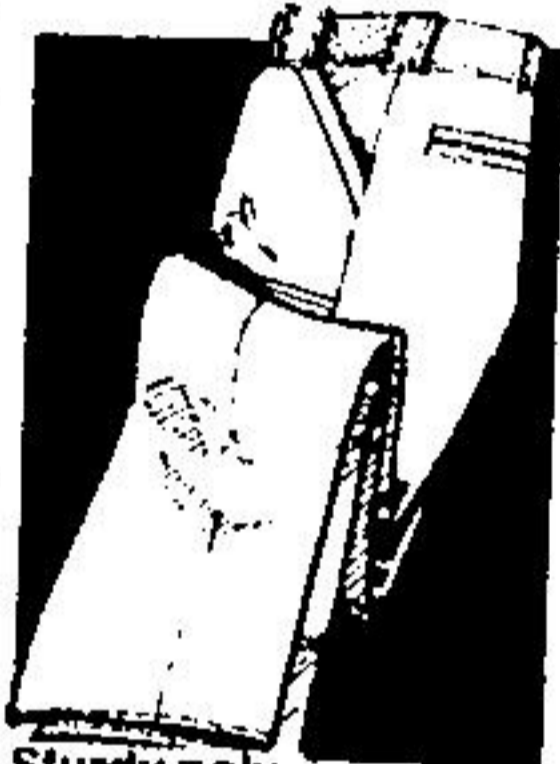
11 HP electric-start tractor with 38" cutting pan
1049⁹⁹ Ea.

4-cycle Briggs & Stratton engine is synchro balanced (24.36 cu. in.) Key electric start. Low-tone muffler. Six-speed transaxle drive with full power reverse. Floating deck with twin blades. 15" x 6.50" front, 18" x 8.50" pneumatic tires. Disc brakes. 545-413

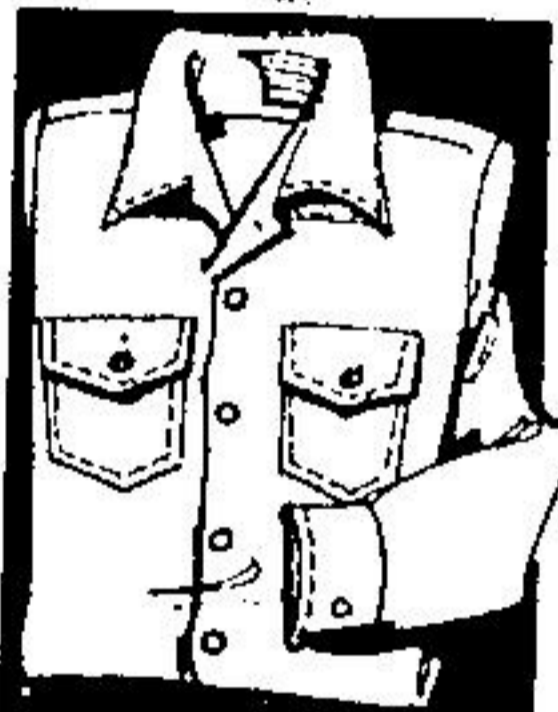


Canadiana Gas Barbeque with Tank and Vinyl Cover **179⁹⁹** Ea.

Large 13 x 20" grillo area (260 sq. in.). Cast aluminum head, stainless steel burner. Portable cart complete with 20 lb. propane gas tank. 575-082



Sturdy polyester cotton Work Pants **11⁸⁸** Ea.
Full-cut work pants with 4 pockets, reinforced front pockets. Lightning zipper. Green. Leg length 29", 30 1/2", 32" Even 30-44". 548-851



Full-Cut Green Work Shirt **10⁸⁸** Ea.
Full-cut long sleeve polyester-cotton shirt with 2 breast pockets, 14 1/2"-17 1/2". 548-650
Longer sleeve/longer body shirt. M, L, XL. 548-648 **\$12.88** Ea.



Round Point Shovels **6²²** Ea.
Your choice Ea.
Hollow back and turned step. 9 x 12" blade. Valval 28" "D" grip handle. 591-550
48" straighthandle. 591-1552



HD7 Motor Oil **69^c** Litre

Multi-grade 10W30 oil with a blend of ingredients to exceed all new car warranties.



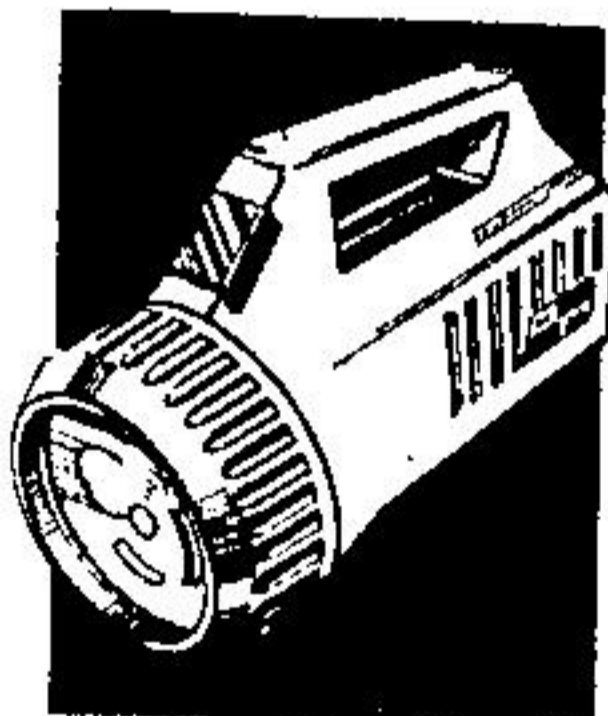
Nipple Drinkers **4⁸⁸** Each Farm Price

Stainless steel nipple drinkers. 1/2" pipe mount with pos.-sealing check valve. 577-407
3/4" x 100". 577-407
1/8" pipe mount baby pig drinker serves up to 15 piglets. 577-412. **\$4.49**



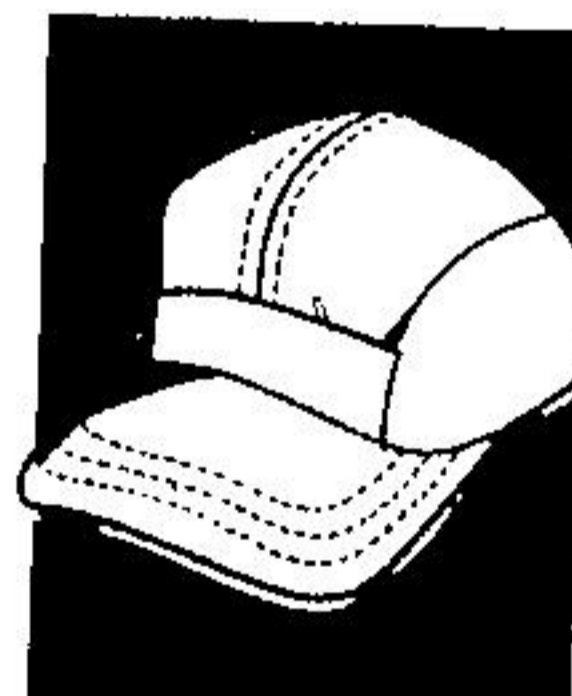
One-Piece Molded Rubber Boot **11⁴⁴** Ea.

Superior one-piece construction helps keep you warm and comfortable in the field or shop. All rubber wedge heel for support. Removable insole. Full sizes only. 6-12. 549-400



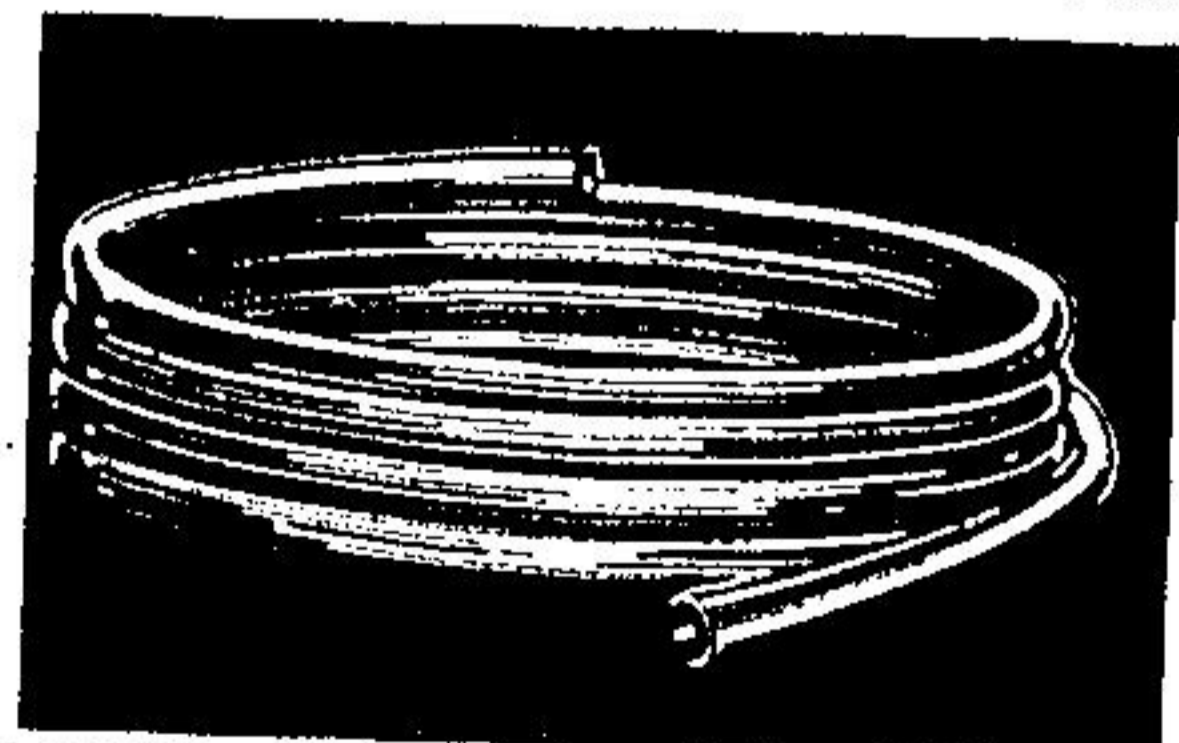
6-Volt Power Lantern **5⁹⁹** Ea.

Unbreakable case, waterproof switch. Bright orange with dark brown lens guard. Battery included. 575-168



Work Cap **1⁵⁹** Ea.

Popular peaked work cap Green. Asst'd. sizes. 548-276



Long Life Polypipe **8⁴⁴** Each 75' x 100'

Designed for installation where constant pressure exists. Bury underground with confidence. Easy to install. 75 PSI.

1/2" x 100'. 589-020. **\$ 8.44** Ea.
3/4" x 100'. 589-021. **\$12.88** Ea.
1" x 100'. 589-022. **\$19.86** Ea.



333 GUELPH STREET, GEORGETOWN
877-2271

UCO UNITED CO-OPERATIVES OF ONTARIO

