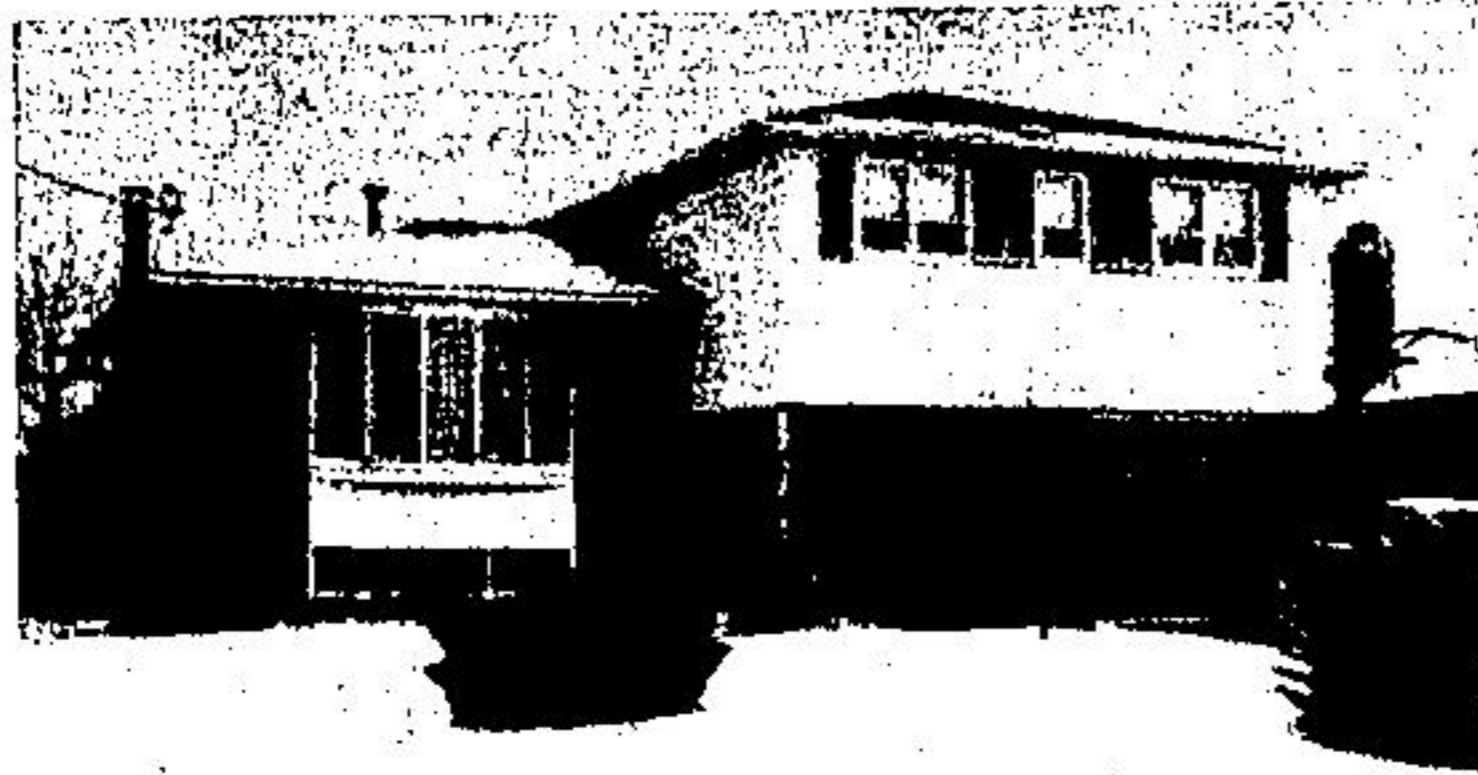




Saxe

Stephen P. Saxe Limited Realtor

877-2219 or 453-1111 **TORONTO**
LINE



GRAND ENTRANCE
\$71,900.

The feature of this fine home is the large entrance foyer leading to livingroom/diningroom area plus efficient kitchen nook eating area. Three good size bedrooms plus finished recreation room with Franklin fireplace. The future den or office off the back door is an extra bonus plus an Inground pool installed in the summer of 1978. For a personal service and viewing of this property call Eleanor Langdon.



TALL PINE ESTATE
HAROLD ST.

ASKING PRICE \$107,800

• Cedar deck front and back • Basement walkout • Holiday kitchen cupboards • Broadloom • American Standard Fixtures, 2 4-pc., 1 2-pc. • Twin-Windows • Redwood garage door • Concrete driveway • Family room fireplace • Pie shaped lot. Call Eleanor Langdon.



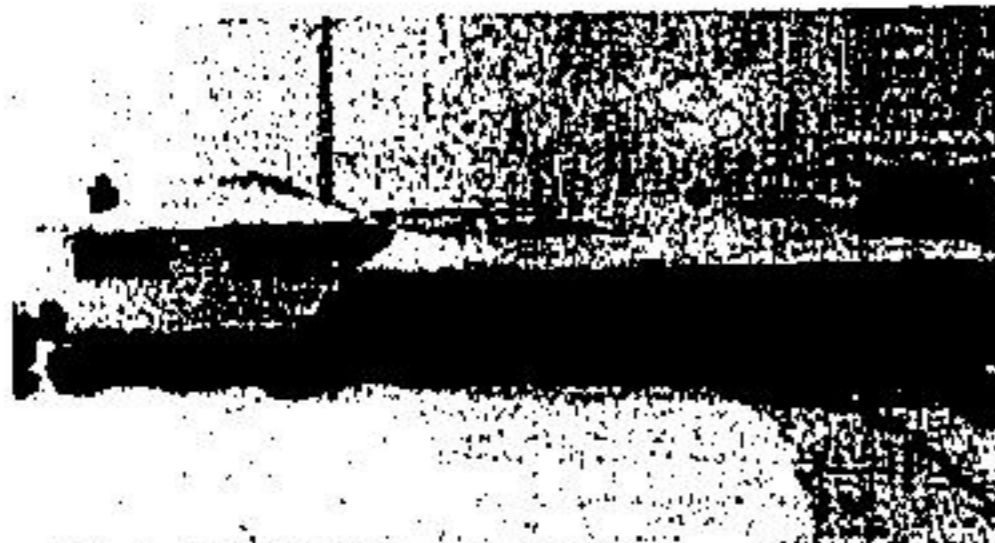
START OUT WITH EXECUTIVE EXTRAS

Superbly landscaped! 16x32' Inground heated pool, central air conditioner, electronic air cleaner, floor to ceiling brick circular fireplace, dark strip hardwood flooring, broadloom in main traffic areas. All this plus a lovely home with 3 bedrooms, 2 baths, and family room for \$69,900. Contact John Caton. DON'T WAIT.



EXECUTIVE RETREAT \$129,900.

This home is nestled in the beautiful Caledon Mountains with a good producing trout stream right next door. The home has 2,700 square feet of luxurious living space and will fill present and future needs. So if you want to still work in the city yet enjoy the supremacy of the Caledon Mountains, please contact me, John Caton for further information.



OPEN HOUSE

COUNTRY-LIVING WITH TOWN WATER

Sat. Feb. 3 1-4 p.m. Base Line 3 mi. W. of Trafalgar (Ballinafad Store)

Do you have country living in mind? The location gives you easy commuting time to Acton or Georgetown in less than 10 minutes. The home offers three bedrooms, living room, dining room, and you will love the finished recreation room with log burning fireplace to help with the heating bills. The yard overlooks a 1 acre trout pond adjacent to the property. (Call John Caton for detailed directions).



DOWNTOWN DEVELOPMENT POTENTIAL

Great depth and easy access to parking make this centrally located downtown property an ideal investment-development medium. Flexible zoning adds attractiveness. Call Eleanor Langdon.



\$69,900.

TOWN & COUNTRY IDEAS

In top shape—this immaculate 3 bedroom sidesplit is ready to move into. There's a roomy entrance foyer, living/dining room has a big bay window, powder room at the rear back door is handy for the kids, and the recreation room is finished in barnboard. Call to see it—you'll like it. Call Robin Fischer.

WORKABLE LAND

WITH CEDAR BUSH

73 acres of land with bank barn, approximately 40 acres of good workable land, balance is mostly cedars with pond sites. An ideal location for your hobby farm just minutes from Georgetown and close to paved road: Asking \$87,500. Call Norm Sinclair.

\$87,900.

COMMERCIAL ON MAIN ST.

3 stores, leases completed, total gross income \$900 per month. 1 year lease with 4 year renewable plus 10% maximum increase. Also income from 3 bedroom apartment. Vendor will hold mortgage for qualified purchaser. For complete information on new tenants and renovations plus expense estimate. Call Coring DePaoli.

CHARLES STREET!

BUILDING LOT

Would you like to build a new home in town? There's not a better chance than on this 55' x 150' lot in the Exclusive Park Area. For \$37,500 start your new dream house April 1st. Give Arlene Shortill a call for further information.

Stephen P. Saxe Limited, Realtor

170 Guelph Street, Georgetown, Ontario

Tom Cooper, F.R.I. 877-9620
John Caton 877-6564
Norm Sinclair 877-6050

Robin Fischer 877-7194
Eleanor Langdon 877-2493
Howard Caton 838-2708

Arlene Shortill 877-6639
Sally Reed 877-4350
Coring DePaoli 877-7976
Don McMillan 854-2435
Wendy Saxe 877-2984