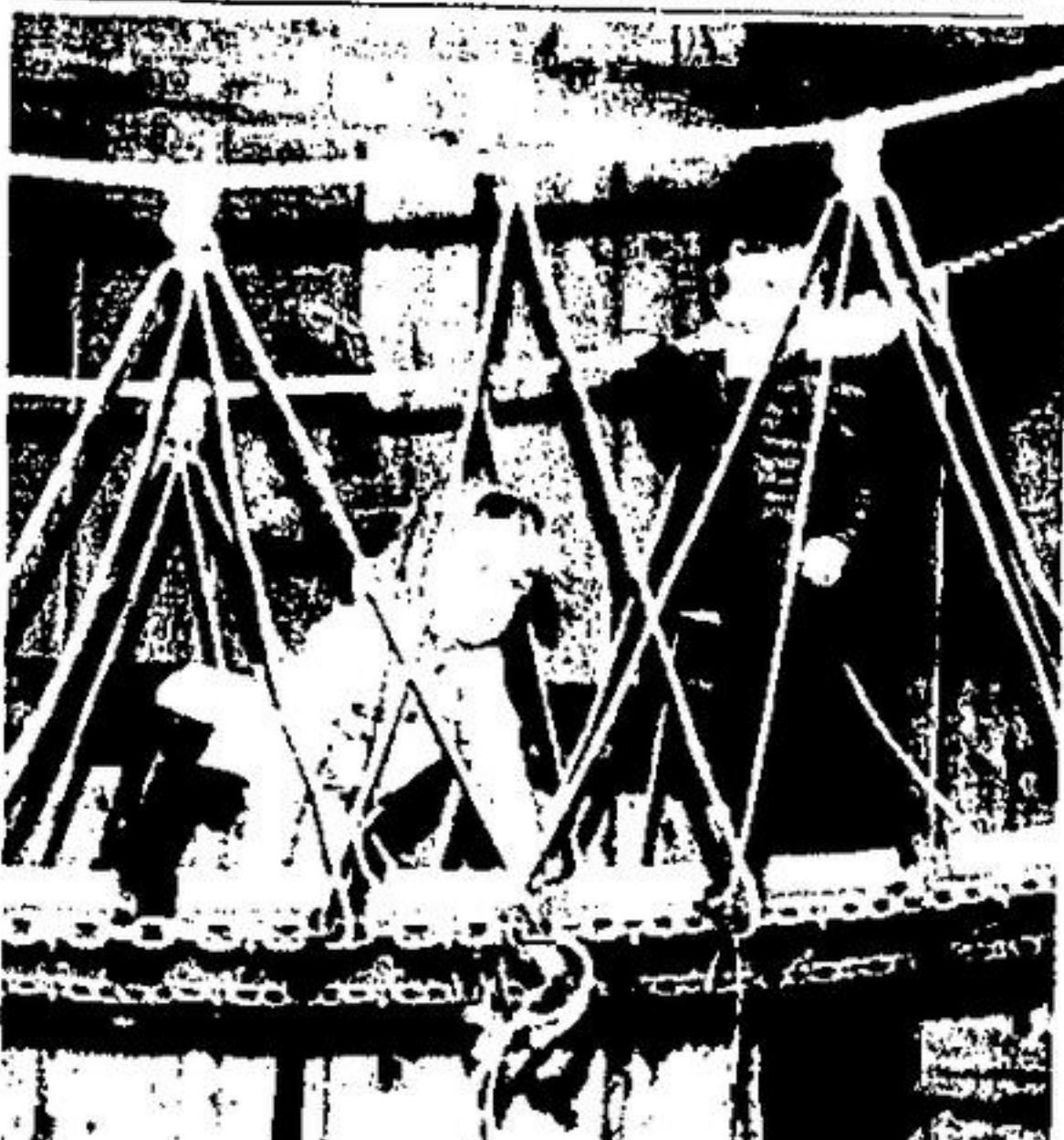


Chudleigh visit thrills youngsters



WEE ANGELA YAWORSKY was a bit leary of the bridge in Chudleigh's apple orchard barn and decided to crawl across instead. Kent Stuckey tries to pass, but eventually decided against it. Angela and Kent were on a field trip from Honey Pot Nursery School last week.

Taking 24 pre-schoolers through Chudleigh's Apple Farm is almost as difficult as it sounds. The boys and girls were from Honey Pot Nursery school and were making that school's annual trek to the popular orchards near Milton last Thursday morning. Teachers Gloria Tomlinson and Sue Adams aided by mothers Jo Marie McAfee, Jeanette McCallum, Rosemary Muggidge, Jeannine Burns and Marg Oliver shepherded the excited youngsters in various cars and headed out.

They were met at the gate by a very capable guide, Marjorie, who was obviously used to such a siege of children. The children were led into a barn with a creative playground set up in one corner.

Ladders, slides, swinging bridges, tire swings and lots of straw kept the tots entertained. Any shyness or inhibitions were lost in the tangle of children.

For a breather, Marjorie

led the two dozen to a quieter area for a cup of apple cider. The children sat on bales of straw while enjoying their refreshments. However, somehow they managed to live up to the quiet corner.

Wise, Marjorie steered the 48 little hands away from the gift shop and all its breakable articles as she took them outside. Then, it was a walk through a real orchard and down the rows of trees. Each boy and girl had a chance to pick an apple or two off the trees. However, it took some doing to keep the children within sight of teachers and parents, much less make them only pick from designated trees. When their bag was filled, they each got to pick an apple for themselves. This they did with seemingly greater enthusiasm.

For a while, as little mouths ate the big apples, it seemed as if the steady murmur of voices had died down. However, good things don't last forever. Marjorie announced there would be a hay ride.

The little legs of the children walked a lot faster back to the barn than they had to get to the apples. On the return trip, they seemed to miss all the mud puddles formed by overnight rains, that had been impossible to miss previously.

The hay ride was even more exciting than they had imagined. Holding back impulses to throw the hay in each other's faces, the youngsters did well not to give the driver a nervous breakdown.

All too soon, the tour was over, and Marjorie waved goodbye. For her, they were just a small group of

youngsters out of hundreds of thousands a year. For the small group of children from Honey Pot nursery, it was a trip they won't forget.

Another class of 24 had gone earlier in the week and saw all the same sights. Mothers accompanying them were Joanna Avery, Karin Dawkins, Lesley Johnston, Lynne Wilson, Pearl Roberts and Jean Vaughan.

Still more children from Honey Pot visited Mount-

seberg. Mothers attending this field excursion were Diana Bailey, Lynda Derech, Brenda Noseworthy, Shelagh Wirth and Donna Yureck.



HOLDING ON TIGHT TO the rope handrail, Scott Oliver from Honey Pot Nursery school walks across a bridge at Chudleigh's apple farm fun barn on Thursday.



BOY, THIS IS A different kind of swing! says Jason Crawford, from Honey Pot Nursery school. Jason and several other classmates were on a field trip to Chudleigh's apple orchards south of Acton and discovered a barn full of creative areas.



PICKING THE APPLES wasn't the best part of a Honey Pot Nursery school field trip to Chudleigh's apple farm. Eating the fruit was the most fun! Mark Hachey, looking straight at camera, and Michael MacArthur, right, and many of their classmates will certainly vouch for that. Accompanied by parents and teachers, the children visited the farm last Thursday.

On November 13, 1978

VOTE...

GOODWIN ROY W. X

REGIONAL COUNCIL REPRESENTATIVE HALTON HILLS, WARD 1

TEL. 853-1630 - Acton

"Dedicated to preserve the identity of our community"



HAVE YOU CLIPPED YOUR MERCHANTS LUCKY DRAW COUPON?

Acton Minor Baseball Association

GENERAL MEETING

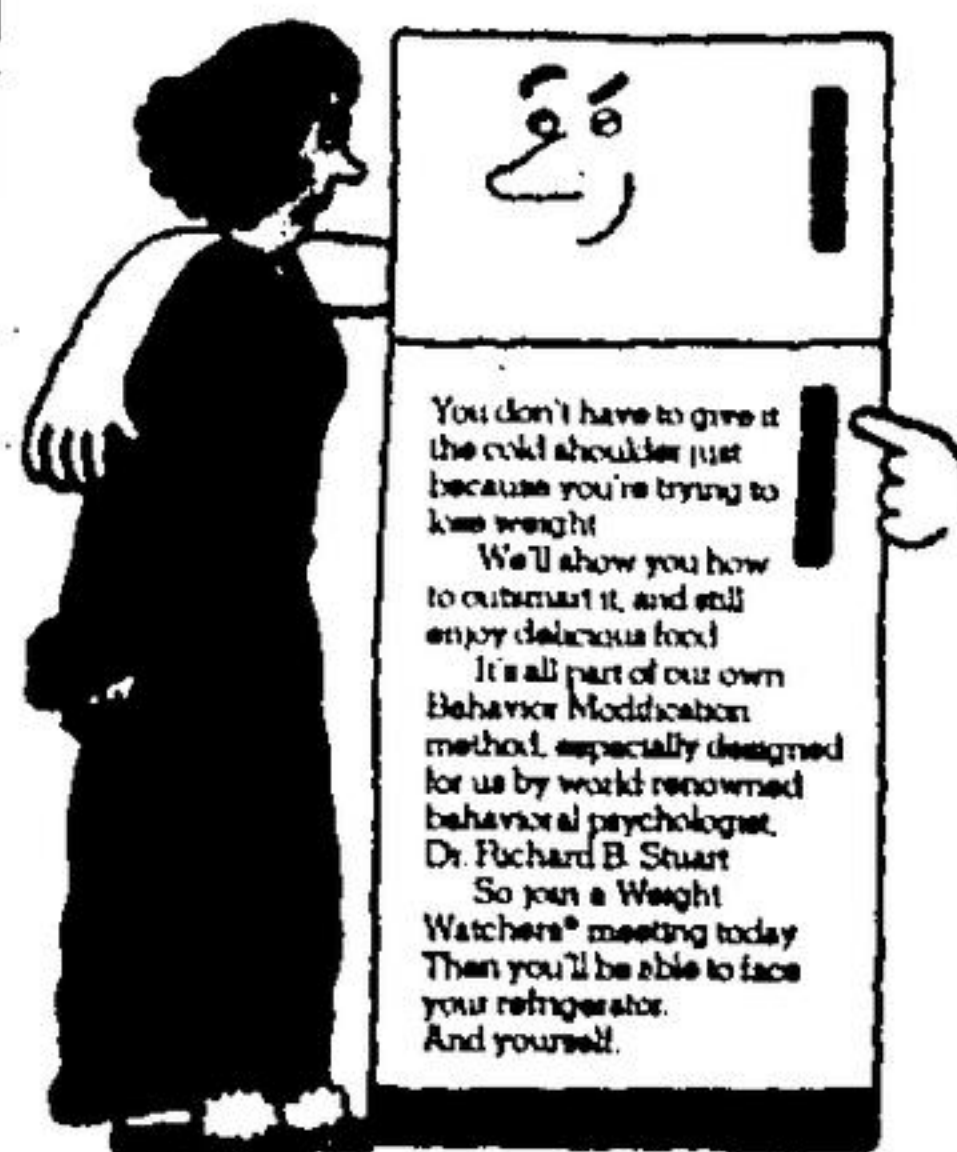
SATURDAY, OCTOBER 14

10:00 a.m.

ACTON LEGION



HOW TO FACE YOUR REFRIGERATOR.



You don't have to give in to the cold shoulder just because you're trying to lose weight. We'll show you how to outsmart it, and still enjoy delicious food. It's all part of our own Behavior Modification method, especially designed for us by world renowned behavior psychologist, Dr. Richard B. Stuart. So join a Weight Watchers' meeting today. Then you'll be able to face your refrigerator. And yourself.

YOU'RE THIS CLOSE TO LOSING WEIGHT. Open House October 16th to 28th

DON'T MISS OUR OPEN HOUSE

You're invited to attend a Weight Watchers Class any time between October 16th and October 28th and see a Weight Watchers Meeting. Discover how the Personal Action Plan can work for you. Attend free of charge with NO OBLIGATION to join.

GEORGETOWN St. George's Anglican Church 60 Guelph Street Tues. 7:30 p.m.

ACTON St. Alban's Parish Hall Willow Street Thurs. 7:30 p.m.

QUELPH Chalmers United Church Hall (back entrance) 60 Quebec St. Thurs. 1 p.m. and 7:30 p.m.

MILTON Holy Rosary Parish Hall 139 Martin Street Tues. 9:30 a.m. to 7:30 p.m.

MISSISSAUGA MEADOWVALE Weight Watchers Head Office 6630 Turner Valley Road Mon. 7:30 p.m. Wed. 7:30 p.m. Thurs. 12 noon QUELPH YM-YWCA 400 Spadina East Mon. 7:30 p.m.

For Class Information Call Mississauga 826-9200

ENROLL AT ANY CLASS

First meeting Fee \$10 all other meetings \$4. Special senior citizen & student rate - first meeting \$5. All other meetings \$2.

FREE EACH MONTH Each month members of our classes receive Weight Watchers magazine absolutely FREE.

Weight Watchers Canada Limited is a registered user of the trade mark Weight Watchers & Weight Watchers Inc. 1978 Registered Owner.



A NICE COLD cup of apple cider quenched the thirst of Dean Wegman last Thursday after playing in the barn at Chudleigh's apple farm near Milton. Dean, along with several other students from Honey Pot Nursery school, enjoyed the outing with their teachers and some patient parents.

OPTIMIST CENTRE SQUASH CLUB

Opening November 1978

Optimist Centre on Commercial Street

Your Application For Membership Is Invited

Facilities Include:

- Four International Size Squash Courts
- Air Conditioned • Whirlpool Bath • Sauna
- Snack Bar & Coffee Shop

Locker & Change Rooms • Equipment Rental

Plans are being finalized for two licensed liquor lounges.

Membership Fees:

Adults \$200.00 • Couples \$375.00

Children \$150.00

Memberships paid prior to November 13th will receive three extra months membership

For Information: Phone Pat Betty After Six 878-1088

Phone 878-8123 (9-5) - Leave name & address to receive application or pick one up at Milton Mall, 2nd Floor, Suite 27

Guelph's Largest Specialty Lighting Store

CHATELAINE LIGHTING

240 York Rd. GUELPH

Multi Bright Ideas For All Your Lighting Needs

EXTENSIVE SELECTION OF HOUSE FIXTURES

Table Lamps - Door Chimes - Swing Lamps Vanity Cabinets - Firecreens & Accessories Central Vacuum Cleaning Systems - Wiring Devices - Lamp Parts Etc. - Ventilation (Hoods, Fans, etc.) - Marble Tables

* FREE PARKING * OPEN DAILY 9:30 - 5:30 FRI. 'TIL 9 SATURDAY 9 - 5



FRIDAY AND SATURDAY

October 13th & 14th (ONLY)

SPECIALS

LIMITED QUANTITIES - NO RAIN CHECKS

PRESTONE II ANTI-FREEZE

SPECIAL LOW PRICE

1 GALLON

\$4.99

WINDSHIELD WASHER ANTI-FREEZE

\$1.07

STAR WARS ACTION FIGURES

- R2-D2
- LUKE SKYWALKER
- DARTH VADER
- C3-PO

and Many More Favorites

\$2.77

100% NYLON

CHILDREN'S TIGHTS

ASSORTED COLOURS

SIZES 2-6

SALE \$1.09

SIZES 7-14

SALE \$1.49

BUY OF THE WEEK

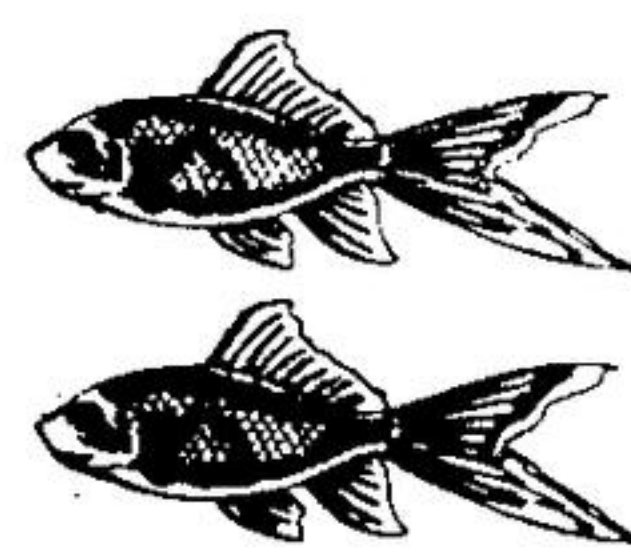
1¢ Sale

On Small Goldfish

BUY ONE AT

39¢

GET ANOTHER FOR 1¢



Limit 4 Per Customer

ZELLERS HAS LOW PRICES

PRE-SEASON SPECIAL

SAVE UP TO

MEN'S, BOYS', WOMEN'S, MISSES CHILDREN'S

WINTER BOOTS CLEARANCE

LAST YEAR'S STOCK

UP TO 50%

HALLOWE'EN FAVOURS

BE SURE TO SEE OUR WIDE SELECTION OF CANDY

SPECIAL

\$1.79

200 Size

Tootsie Rolls

REGAL SUPER VALUE 240 ASSORTED TREATS

SKILLET SPECIAL

Friday & Saturday Only

October 13-14-78

DINNER FOR \$2.50

- Roast Sirloin of Beef
- Dessert Choice of Puddings or Ice Cream

SHOPPERS TAKE A BREAK

Hot Apple Dumping & A Cup of Coffee

FOR ONLY \$1.00

FURNITURE SAVINGS

\$300

2 PIECE HI-BACK

Chesterfield Suite Regular \$599.95

NOW \$299.95

2 Piece Hi-Back

DAVENPORT SUITE Regular \$299.95

NOW \$249.95



55 ONTARIO ST.

MILTON MALL

878-8178

OPEN MONDAY-FRIDAY 9:30-6:30 SATURDAY 9-6