

Entry Court compact home

Plan No. P5-3-187

Featured as the "plan of the week" is this U-shape, nonbasement, three bedroom home.

The entry court leads to the double-door entry, shown flanked by full-length coloured glass. There's a guest closet handy to the entrance, and an immediate view of the living room and its wood burning fireplace. Large windows on either side of the fireplace make this a good design for the lot with a view.

The family room, kitchen and utility area combine compact design with privacy. The intimate dining room, with its large window overlooking the entry court, can be closed off from the rest of the house. There's a service counter to the kitchen easily closed off with louvered bi-fold doors.

Just a few steps off the kitchen is the laundry area, which can be closed off when required. The family room like the utility is just steps from the kitchen, and features sliding glass doors to an outdoor patio, which is ideal for a summer eating area, with Bar-B-Q, and outdoor furniture.

With three bedrooms, the bedroom wing is well designed for family comfort. The master bedroom has a three piece shower ensuite, and a walk-in closet. Vaulted ceilings with the under-eye glass, and a large picture window overlooking the entry court, make the master bedroom quite luxurious. The other two bedrooms, each with ample closet space, and a large window share a three piece bath.

Off the inner hall, across from the main bathroom, is the furnace room, with a large storage area, which adds to the already ample

closet space located off the main hallway.

The exterior shown combines fieldstone, glass and natural wood siding to create contemporary design, ideal for the growing family. There's luxury too, with the double garage, to keep vehicles secure yet convenient. There's room to build in shelving along the end wall or sides of the garage to add extra storage.

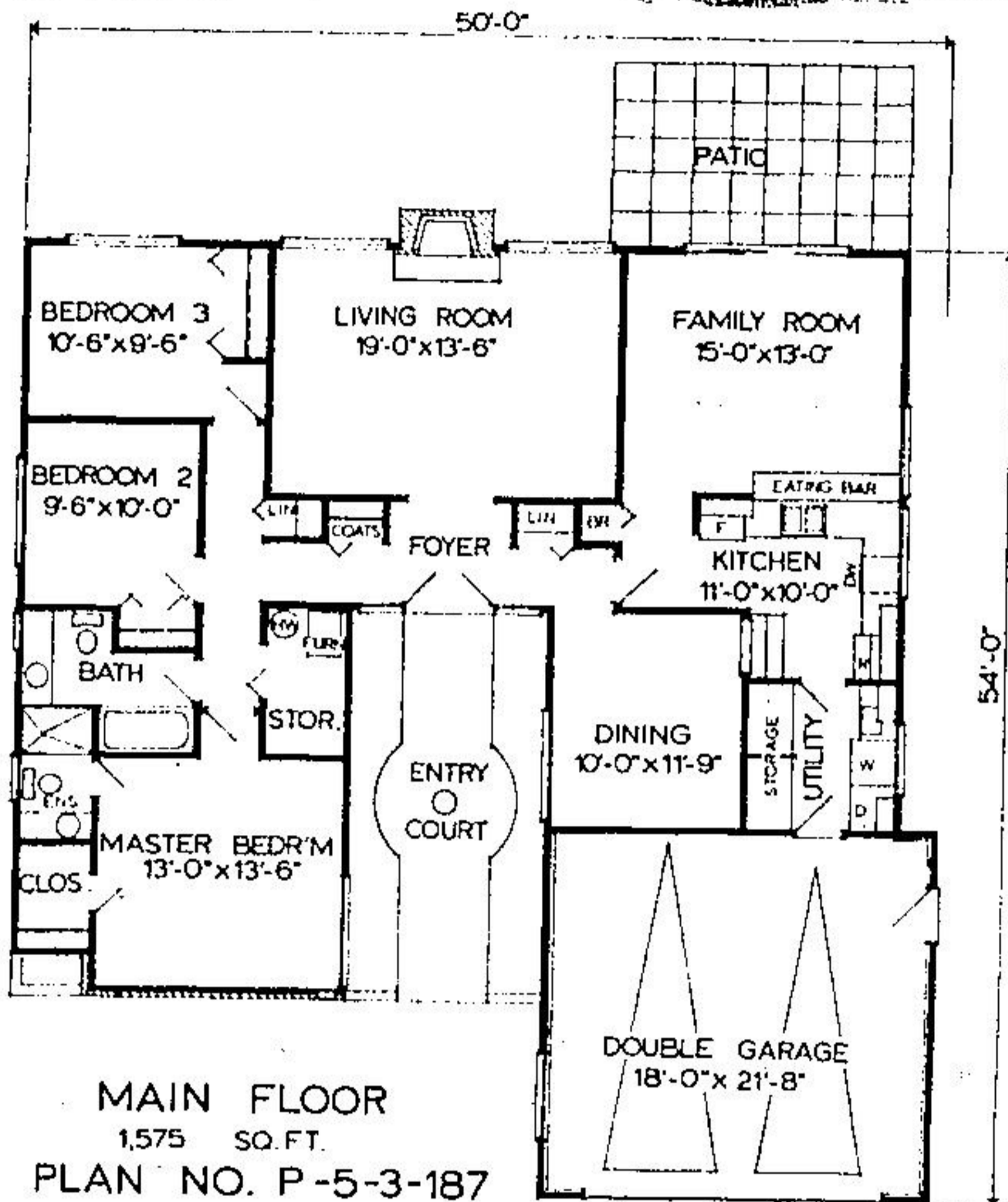
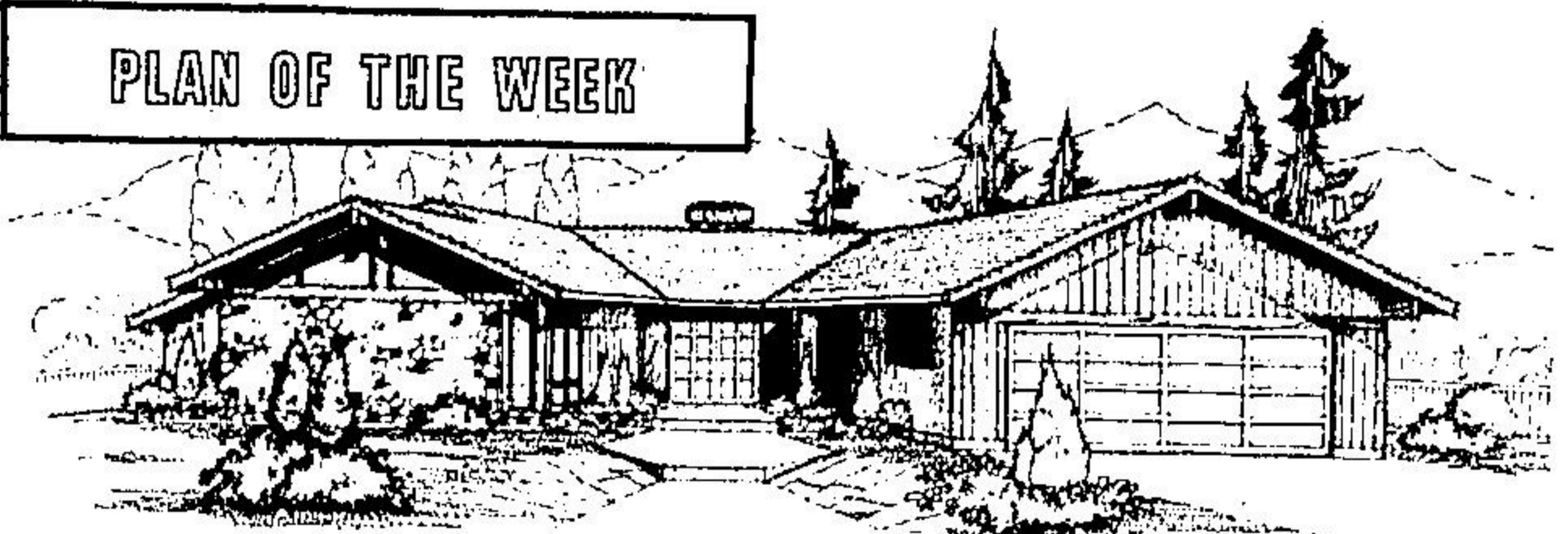
For a cost saving at the construction stage, leave the garage unfinished, and complete it yourself later. The new metric standard sizes for plywood sheets, drywall, waferboard and other panel products will be 1200 mm by 2400 mm (the old 8 by 4 sheets). The size of 2400 mm is about 1 1/2 inches shorter than eight feet, and 1200 mm is about 3/4 of an inch narrower than four feet. You can cover the height difference with baseboard, and the width simply with extra panelling if you are using the metric sizes in a conventional room.

No matter what building options you choose, this three bedroom home will provide a great environment for the growing family.

Plans for design No. P5-3-187 may be obtained at a cost of \$78 for a set of three and \$9 for each additional set. Allow \$2 to cover postage and handling.

To view more than 100 well designed quality homes of every type, send for the current publication of the Home Plan Catalogue available for \$2.60 (\$2.25 plus 35c postage and handling). Make cheques and money orders payable to Plan of the Week, and mail to: PLAN OF THE WEEK, Georgetown Independent or Acton Free Press, 324 Columbia Street, New Westminster, B.C. V3L 1A6.

PLAN OF THE WEEK



G. ALEC JOHNSON LTD.



2 MILL ST. E.
ACTON

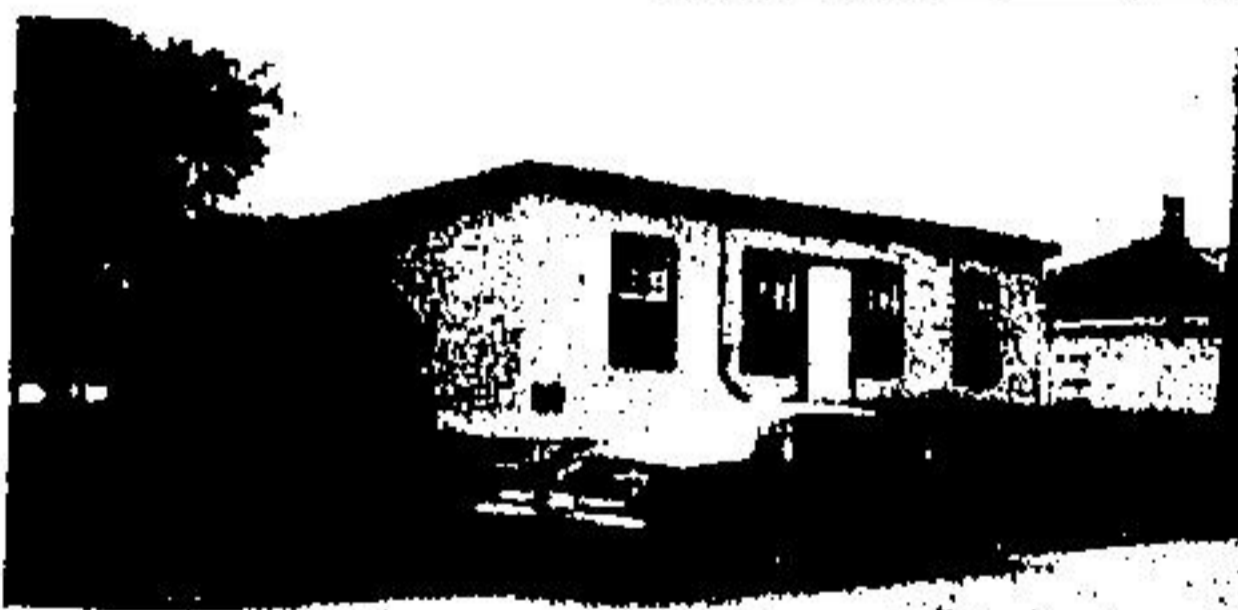


853-2086



INCOME-INVESTMENT

Property fully rented and showing a good return. Centrally located in Acton this duplex features one, two bedroom and one, three bedroom apartment. Large lot, good financing available, an ideal opportunity to let your money work for you. Asking \$44,500.



THE PERFECT STARTER

Home set on an attractive lot on a quiet street. This spotless bungalow features four bedrooms, bathroom, large kitchen, den, full high and dry basement, garage, and a paved drive. Try an offer. Asking \$47,900.



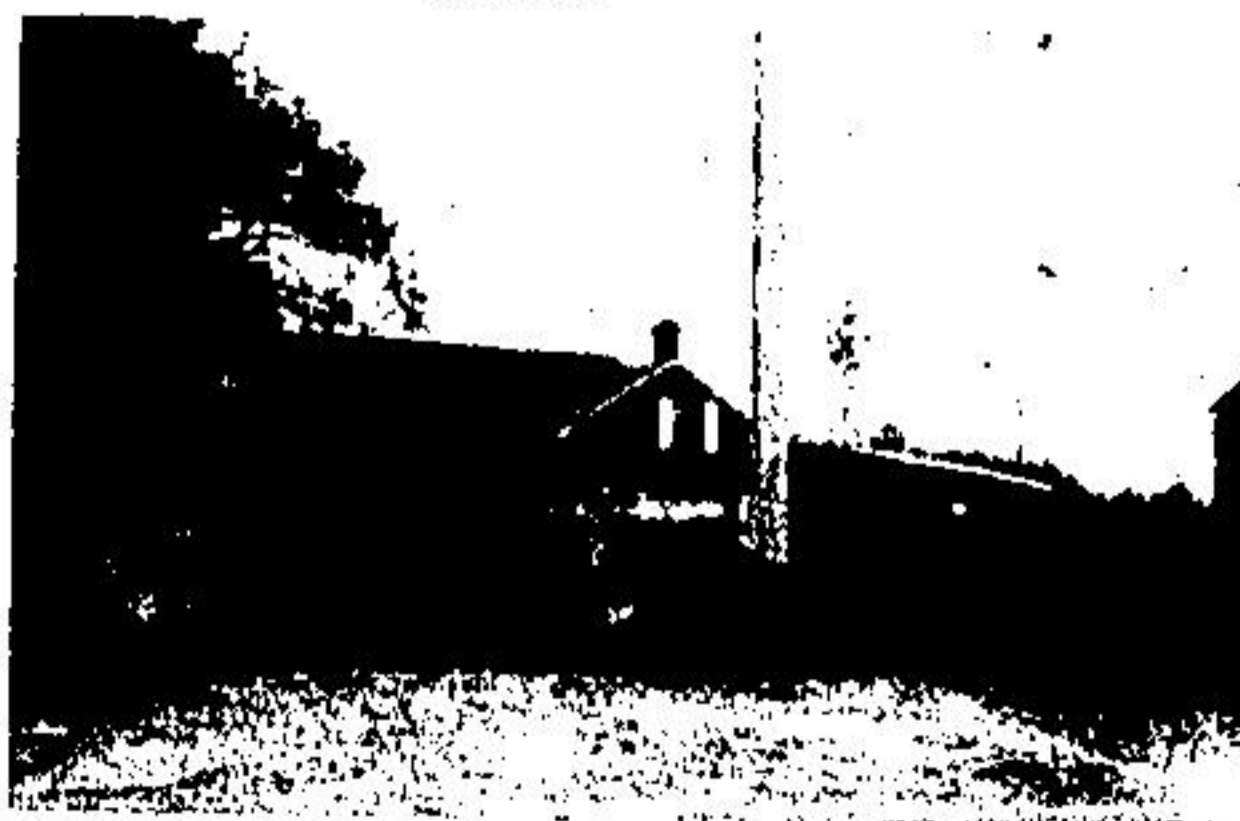
SUPER BUY

This roomy brick two-storey features 4 bedrooms, 1 1/2 baths, separate dining room, eat-in kitchen, quality broadloom throughout, garage, paved drive, and a fully fenced yard backing onto greenbelt. Now only \$57,900.



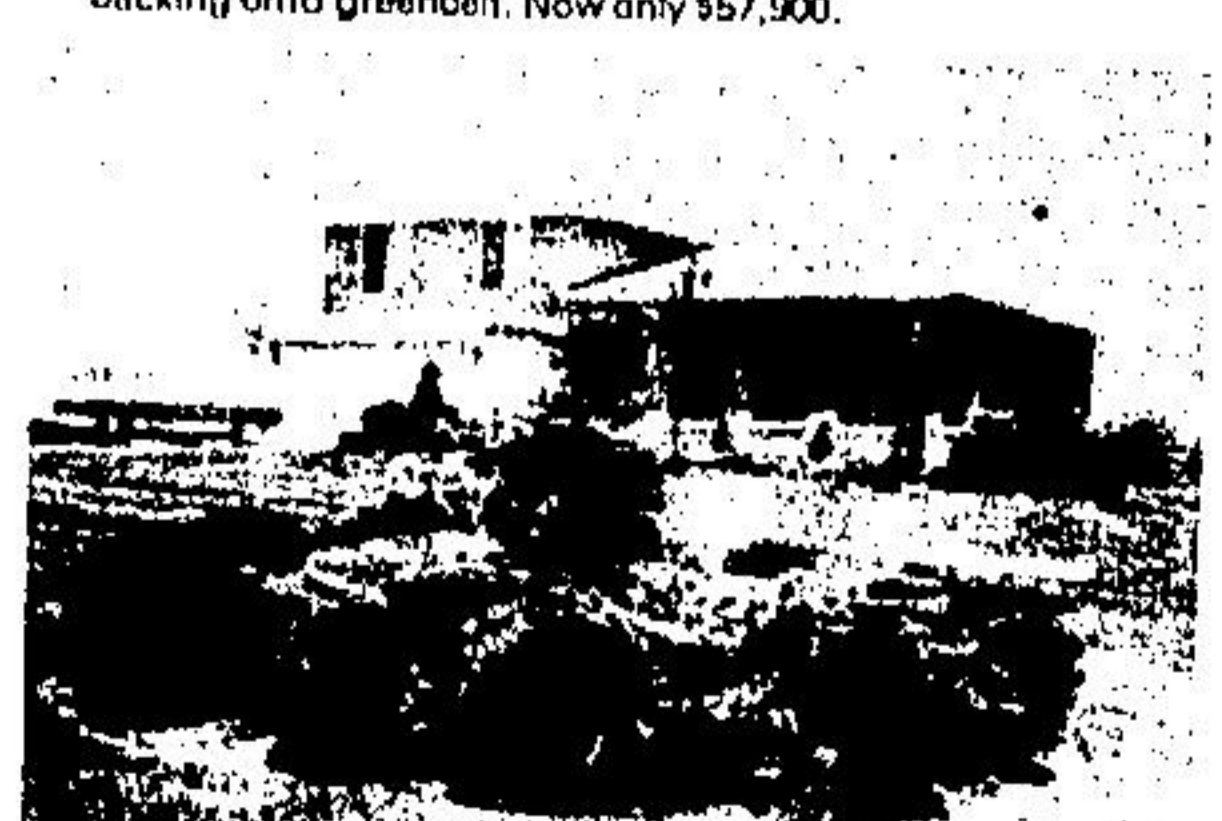
FIRST TIME BUYERS

For only \$40,400 and a low down payment you could own this attractive townhouse featuring 3 bedrooms, living and dining room with walkout, 1 1/2 baths and a large fenced rear yard.



HOBBY FARM

Set on 10 acres with large frontage, minutes from Acton. This property includes an older 1 1/2 storey stone and cedar home, a large barn, spring pond, inground pool, and many other extras. This home has 11 rooms, including 5 bedrooms and two bathrooms and could very easily be used as a two family dwelling. It's a must to see at only \$89,900.



TRY AN OFFER, MUST BE SOLD

Set on approximately 2 acres of attractively landscaped grounds, this quality split level features 3 large bedrooms, 3 baths, ground floor family room with fireplace and walkout to large patio, custom eat-in kitchen, separate dining room, rec room, games room, ground floor laundry, double car garage, and separate storage building. Must be seen to be appreciated. Asking \$107,500.