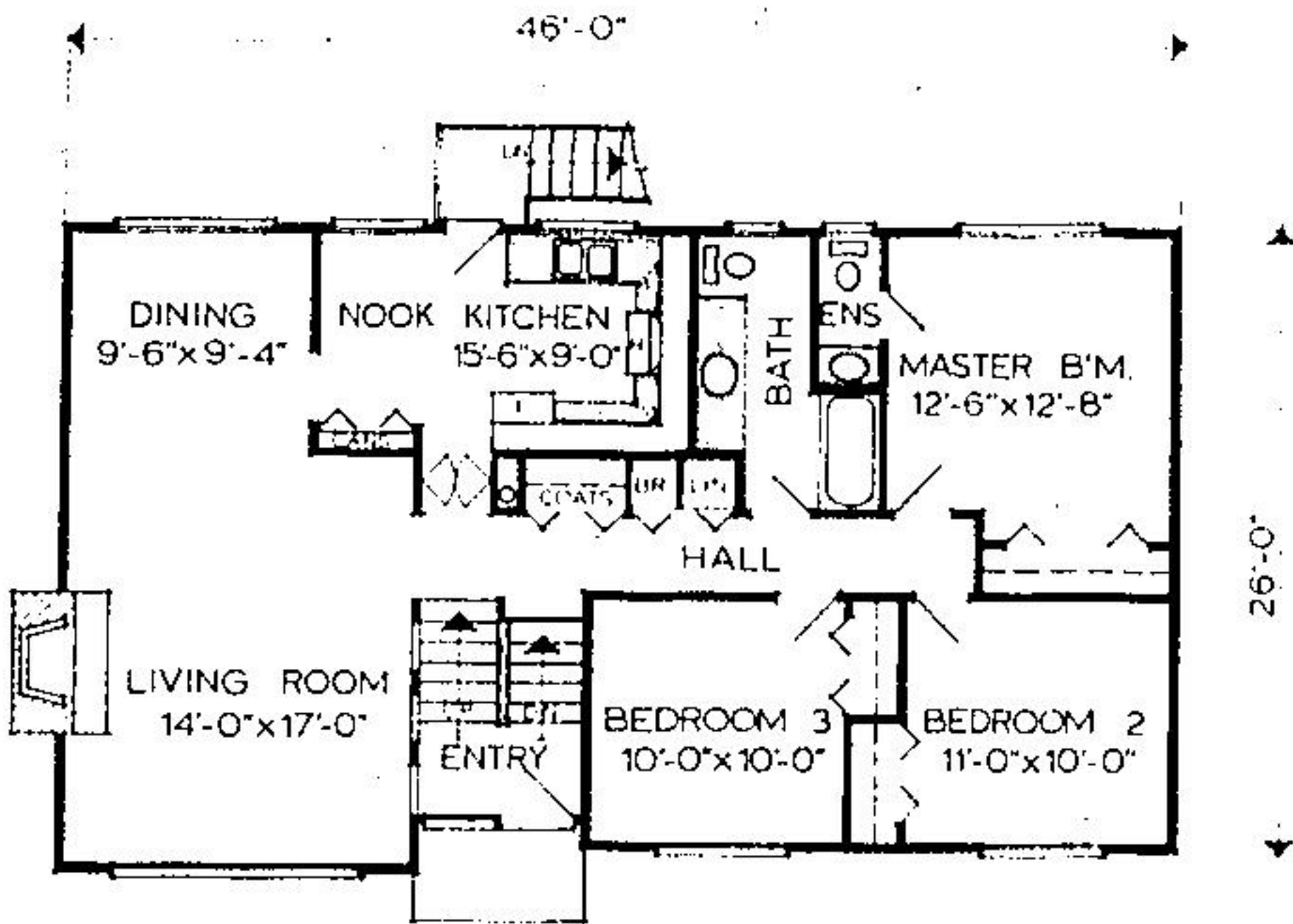


PLAN OF THE WEEK

Cathedral Entry Family Home



MAIN FLOOR  
1,250 SQ FT  
PLAN NO. P-3-3-167

Plan No. P3-3-167  
This cathedral entry family home is styled to blend contemporary and traditional elements and is quite adaptable to any urban or rural residential environment.

The attractive cedar siding with accent trim, topped by the heavy shake roof, give the home the traditional design. A carport under bedroom number three can easily be enclosed at the time of initial construction, or leave it as is, and enclose it later as the budget allows.

Large paneled doors open to the cathedral entry foyer, where stairs lead down to the unfinished basement and up to the central hall, which is lined with coat, broom, and linen closets.

Featuring a wood-burning fireplace and view window to the front, the living room forms part of a large "L" with the dining room. A time-tested design, the "L" shape living-dining area will be a convenience when entertaining, as well as a functional design for everyday family living.

The compact "U" shape kitchen has cupboard space to spare and is ideally situated for easy service to the dining room, as well as the nook area. There's also a rear door opening to the back stairs. The kitchen and nook both have windows overlooking the back yard, a must for child watching.

The three-piece vanity bath serves all bedrooms and doubles as a guest powder room. In the master bedroom a two-piece washroom ensuite adds a touch of luxury and convenience.

A roughed-in fireplace for the recreation room and plumbing for a full bathroom await the handyman, or future budget expenditures. There is also room for further

bedrooms, a workshop, or storage and utility areas.

Plans for design No. P3-3-167 may be obtained at a cost of \$68 for a set of three and \$9 for each additional copy. Allow \$2 to cover postage and handling.

To view more than 100 well-designed quality homes of every type, send for the current publication of the Home Plan Catalogue, avail-

able for \$2.60 (\$2.25 plus 35c postage and handling). Make all cheques and money orders payable to "Plan of the Week" and mail to: PLAN OF THE WEEK Georgetown Independent 324 Columbia Street New Westminster, B.C. V3L 1A6

PLAN OF THE WEEK Acton Free Press, 324 Columbia Street New Westminster, B.C. V3L 1A6

**Bert** REAL ESTATE BROKER  
**le roy**  
853-2059  
DOWN TO EARTH CORNER

R.R. 1, Acton

If no answer call 853-2980

THE PRICE IS RIGHT  
10 ACRES—HOME

5 bedrooms, 2 storey home, ground level family room, fireplace, several bathrooms. Pond and steel barn.

SOLAR HOME  
FEATURES

2 acres, treed, secluded, 20" insulation, heat pump. Come and see this different home. Ready for occupancy soon.

Inquire about our special selling commission which is adjusted to every individual case.

FOR RENT

2 bedroom apartment in Acton. Heated. \$140.00 monthly.

G. ALEC  
**JOHNSON**  
LTD.



2 MILL ST. E.  
ACTON



853-2086



THE PERFECT STARTER

Home set on an attractive lot on a quiet street. This spotless bungalow features four bedrooms, bathroom, large kitchen, den, full high and dry basement, garage and paved drive. Try an offer. Asking \$47,900.



A MUST TO SEE

This roomy brick two storey features 4 bedrooms, 1 1/2 baths, separate dining room, eat in kitchen, quality broadloom throughout, garage, paved drive, and a fully fenced yard backing onto greenbelt. Just reduced to \$57,900



TRY AN OFFER, MUST BE SOLD

Set on approximately 2 acres of attractively landscaped grounds, this quality split level home features 3 large bedrooms, 3 baths, ground floor family room with fireplace and walkout to large patio, custom eat in kitchen, separate dining room, rec room, games room, ground floor laundry, double car garage, and separate storage building. Must be seen to be appreciated. Asking \$107,500



OPEN SPACES

See this 20 acre property with fenced paddocks, a large fully equipped barn with excellent box stalls, a pond, and a 4 bedroom brick and aluminum sidsplit located on a paved road close to main hwy. south of Acton. Call today for all the features included with this property. Asking \$129,900



IMMACULATE

Set on an attractively landscaped lot in Fairy Lake area, this spacious tri level is in immaculate condition and features a ground level family room, 1 1/2 baths, 3 bedrooms, extra large modern kitchen, formal living room, and broadloom throughout. It's a must to see at only \$55,900

COUNTRY BARGAIN

Pleasant country living can be yours with this spacious brick rancher set on a large lot minutes from Acton. This home features 3 bedrooms, 4 pc. bath, separate dining room, living room with stone fireplace, eat in kitchen, rec room with bar and fireplace, and double car garage. Priced at only \$63,500

FIRST TIME BUYERS

For only \$40,400 and a low down payment, you could own this attractive townhouse featuring 3 bedrooms, living and dining room with walkout, 1 1/2 baths and a large fenced year yard.

COUNTRY HOME SITE

Building site located on a paved road south of Acton close to Hwy 25, 300 frontage, full bush, overflowing stream. Asking \$45,000

FOR RENT

2 Bedroom brick home-central location, immediate possession, \$300 monthly. Lease available, references required